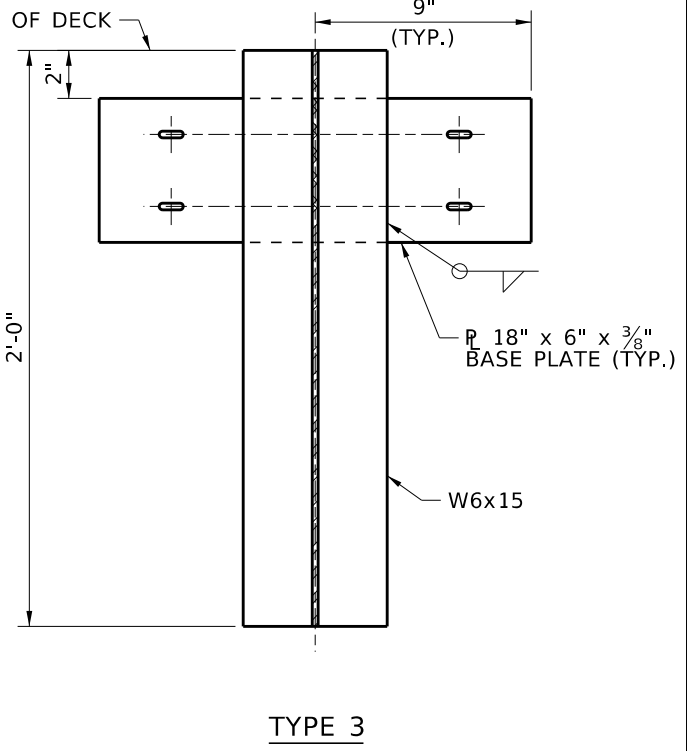
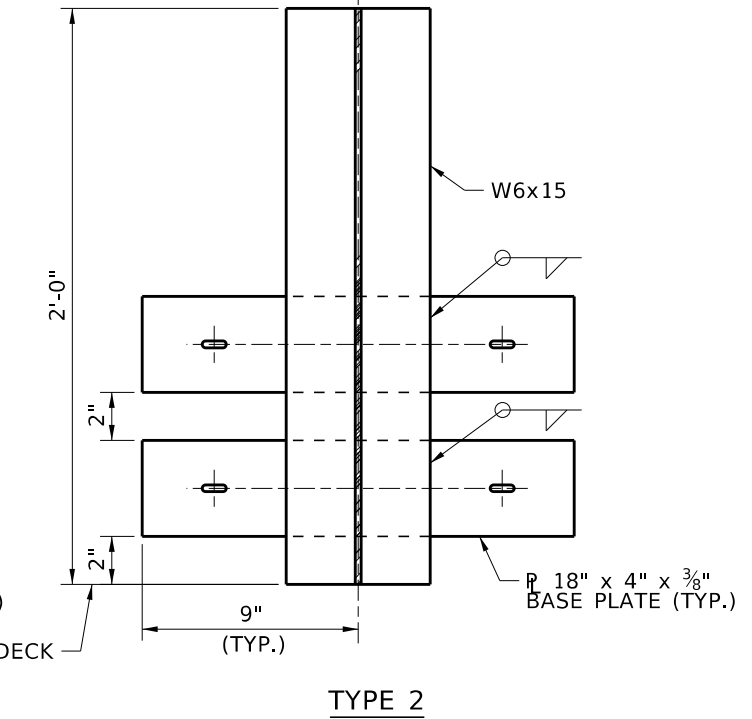
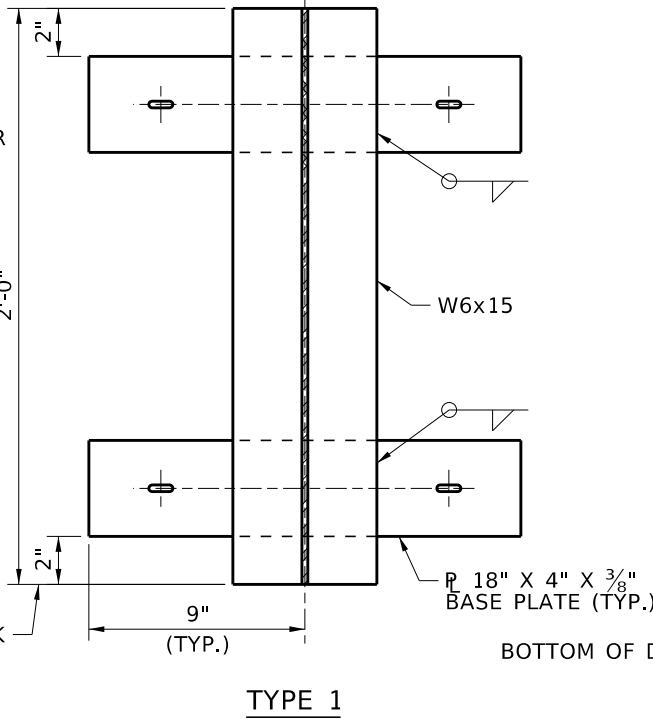
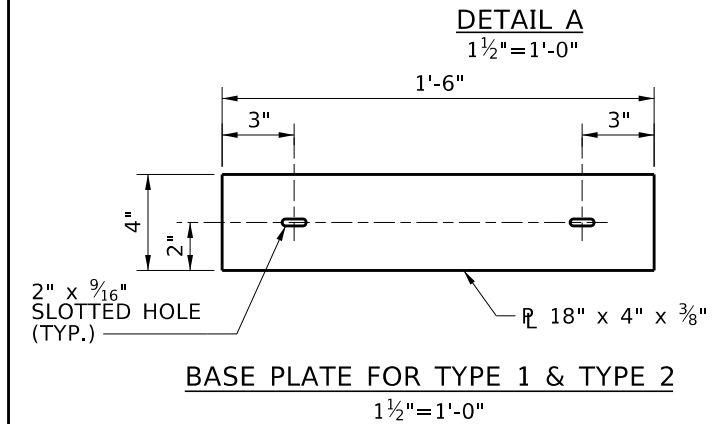
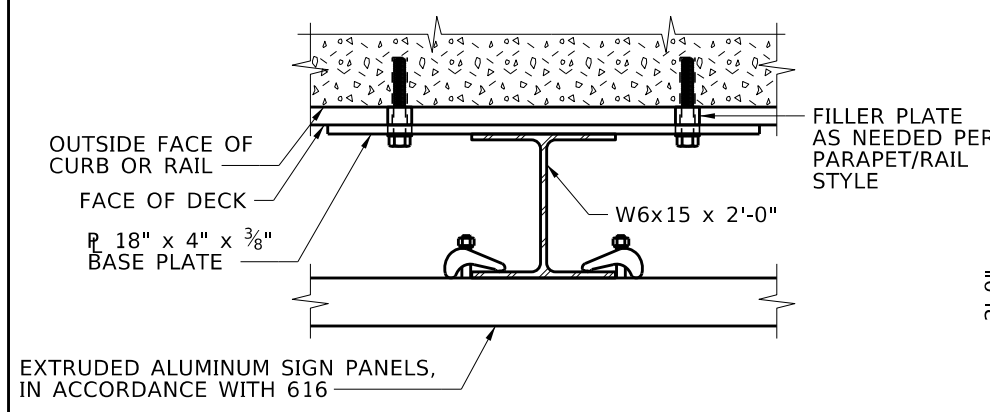
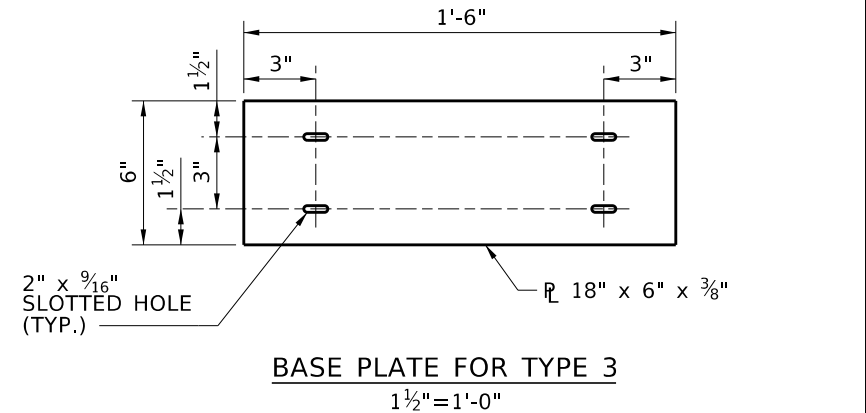


NOTES

1. MOUNT BOTTOM OF SIGN FLUSH WITH THE BOTTOM EDGE OF THE DECK FACING TRAFFIC.
2. ALIGN THE LEFT EDGE OF THE SIGN 2'-0" TO THE RIGHT OF THE LANE/SHOULDER STRIPE.
3. THIS DRAWING WILL BE ACCOMPANIED BY STANDARD DRAWING 616.2, EXTRUDED ALUMINUM SIGNS.
4. PROVIDE STRUCTURAL STEEL PLATES AND SHAPES IN ACCORDANCE WITH ASTM A36 AND GALVANIZE IN ACCORDANCE WITH ASTM A123.
5. SEE ROADWAY PLANS FOR SIGN DETAILS.
6. PROVIDE SIGN IN ACCORDANCE WITH "STANDARD HIGHWAY SIGNS" MANUAL FOR GUIDE SIGN DESIGNATION D3-1 FOR WHITE ON GREEN BACKGROUND.
7. PROVIDE 1/2" DIA. STAINLESS STEEL SCREW ANCHORS IN ACCORDANCE WITH ACI 318-19, CHAPTER 17 THAT MEET ASSESSMENT CRITERIA OF ACI 355.2. SUBMIT ICC-ES REPORT.
8. PAY FOR EXTRUDED ALUMINUM SIGN PANELS UNDER THE PAY ITEM 616-015A. MOUNTING BRACKET COST INCIDENTAL TO PAY ITEM 616-015A.



REVISIONS			
NO.	DATE	BY	DESCRIPTION

DESIGNED
DESIGN CHECKED
DETAILED
DWG. CHECKED
CORRECTIONS

SCALES SHOWN ARE FOR 11" X 17" PRINTS ONLY
CADD FILE NAME
Standards/Bridge Standard Drawings
B13_B.DGN
DRAWING DATE: OCT 2023

IDAHO TRANSPORTATION DEPARTMENT

YOUR Safety → YOUR Mobility → YOUR Economic Opportunity

APPROVED BY: BRIDGE ENGINEER **MICHAEL T. JOHNSON** DATE: _____

ENGLISH

PROJECT NO. _____

BRIDGE NAME SIGNAGE

BRIDGE LRFD DESIGN MANUAL, B13.8

BRIDGE PLANS	
BRIDGE KEY NO.	
COUNTY	KEY NO.
BRIDGE DWG. NO.	SHEET OF