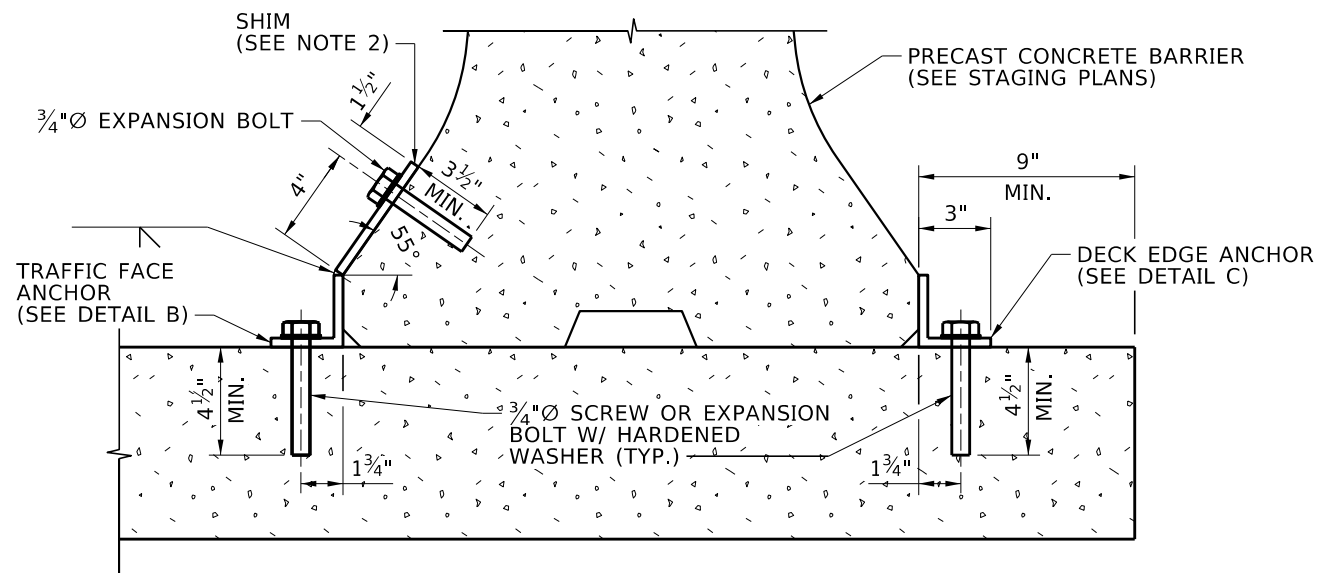
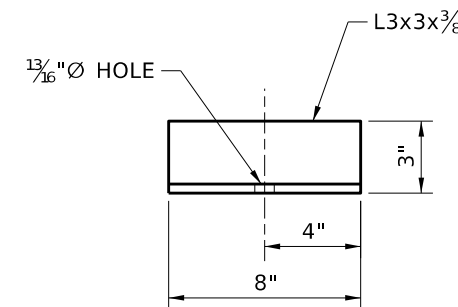


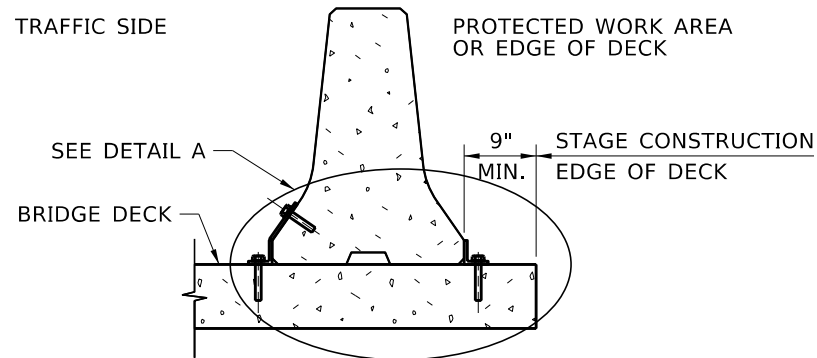
DETAIL B
3"=1'-0"



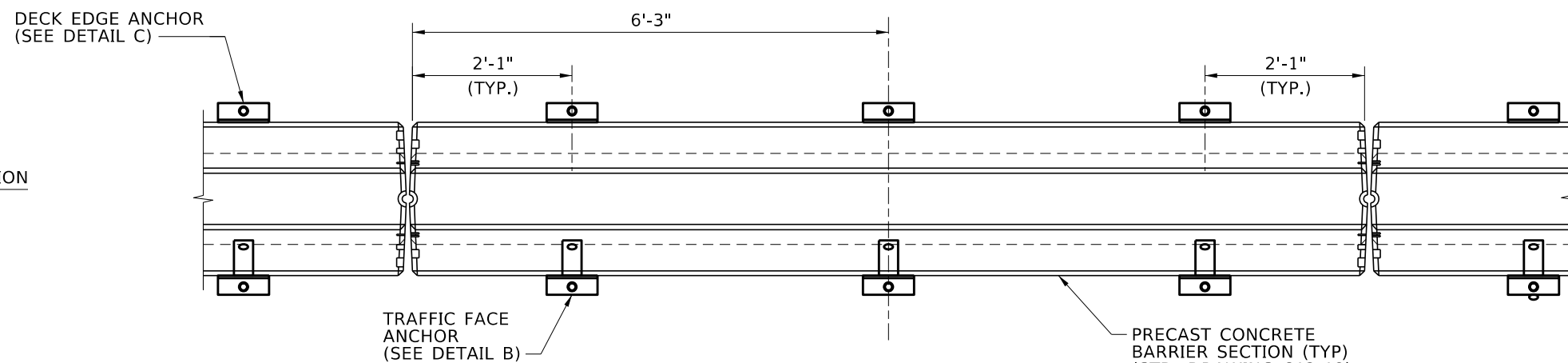
DETAIL A
3"=1'-0"



DETAIL C
3"=1'-0"



TYPICAL SECTION
1/2"=1'-0"



PLAN VIEW
1/2"=1'-0"

NOTES

1. ADJUST THE LOCATION OF THE ANCHORS TO AVOID THE MAIN REINFORCING IN THE DECK WHEN DRILLING HOLES.
2. USE SHIMS TO PROPERLY FIT THE ANCHORS TO THE BARRIER AND ROADWAY SURFACES.
3. UPON REMOVAL OF THE ANCHORS, CLEAN THE BOLT HOLES AND FILL THEM WITH GROUT IN ACCORDANCE WITH 705.02.

REVISIONS			
NO.	DATE	BY	DESCRIPTION
▲			
▲			
▲			
▲			

DESIGNED
DESIGN CHECKED
DETAILED
DWG. CHECKED
CORRECTIONS

SCALES SHOWN ARE FOR 11" X 17" PRINTS ONLY
CADD FILE NAME
Standards/Bridge Standard Drawings B13_9.DGN.dgn
DRAWING DATE: OCT 2023

IDAHO TRANSPORTATION DEPARTMENT

YOUR Safety → YOUR Mobility → YOUR Economic Opportunity

APPROVED BY: BRIDGE ENGINEER **MICHAEL T. JOHNSON** DATE: _____

ENGLISH
PROJECT NO.

TEMPORARY CONC. BARRIER ANCHORAGE

BRIDGE LRFD DESIGN MANUAL, B13.9

BRIDGE PLANS	
BRIDGE KEY NO.	
COUNTY	KEY NO.
BRIDGE DWG. NO.	SHEET OF