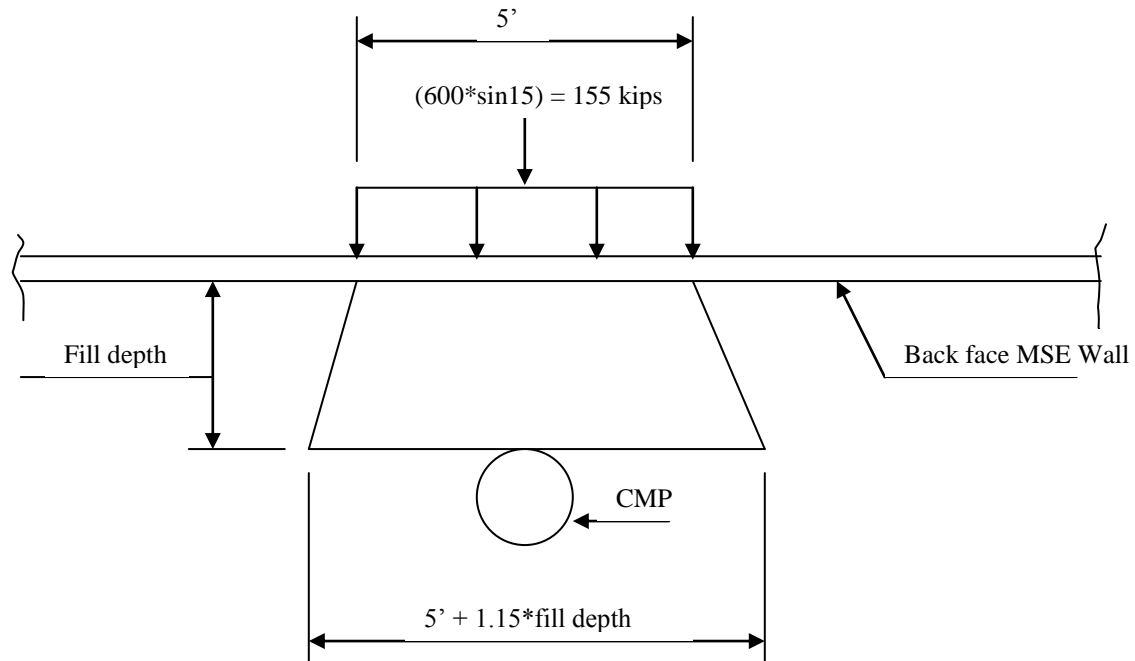


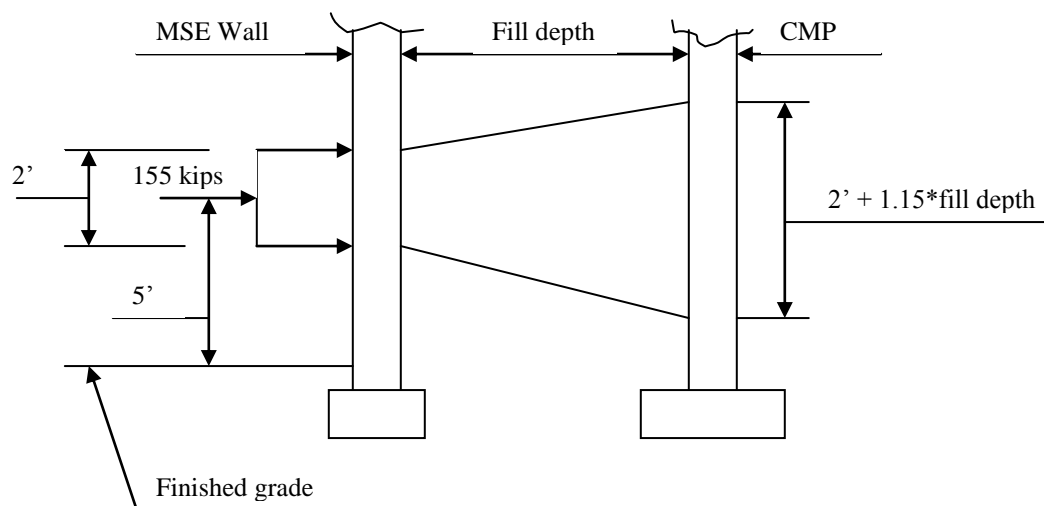
### 3.6.5 VEHICLE COLLISION FORCE

The provisions of this article shall also apply to columns of spill-through abutments contained within MSE wall fills. The 600-KIP collision force shall be assumed to act  $15^\circ$  to the edge of pavement at a distance of 5.0 feet above ground. Furthermore, the collision force shall be distributed over a MSE wall area not greater than 5.0 ft wide by 2.0 ft high and distributed through the fill in accordance with Article 3.6.1.2.6, where the fill depth shall be taken as the cover distance measured from the back face of the MSE wall panel to the face of the CMP pipe. The resulting pressure shall be assumed to act on the full diameter of the CMP and applied as a line load acting along the longitudinal axis of the column.

The following diagram assumes the MSE wall is parallel to the edge of pavement.



**PLAN**



**ELEVATION**