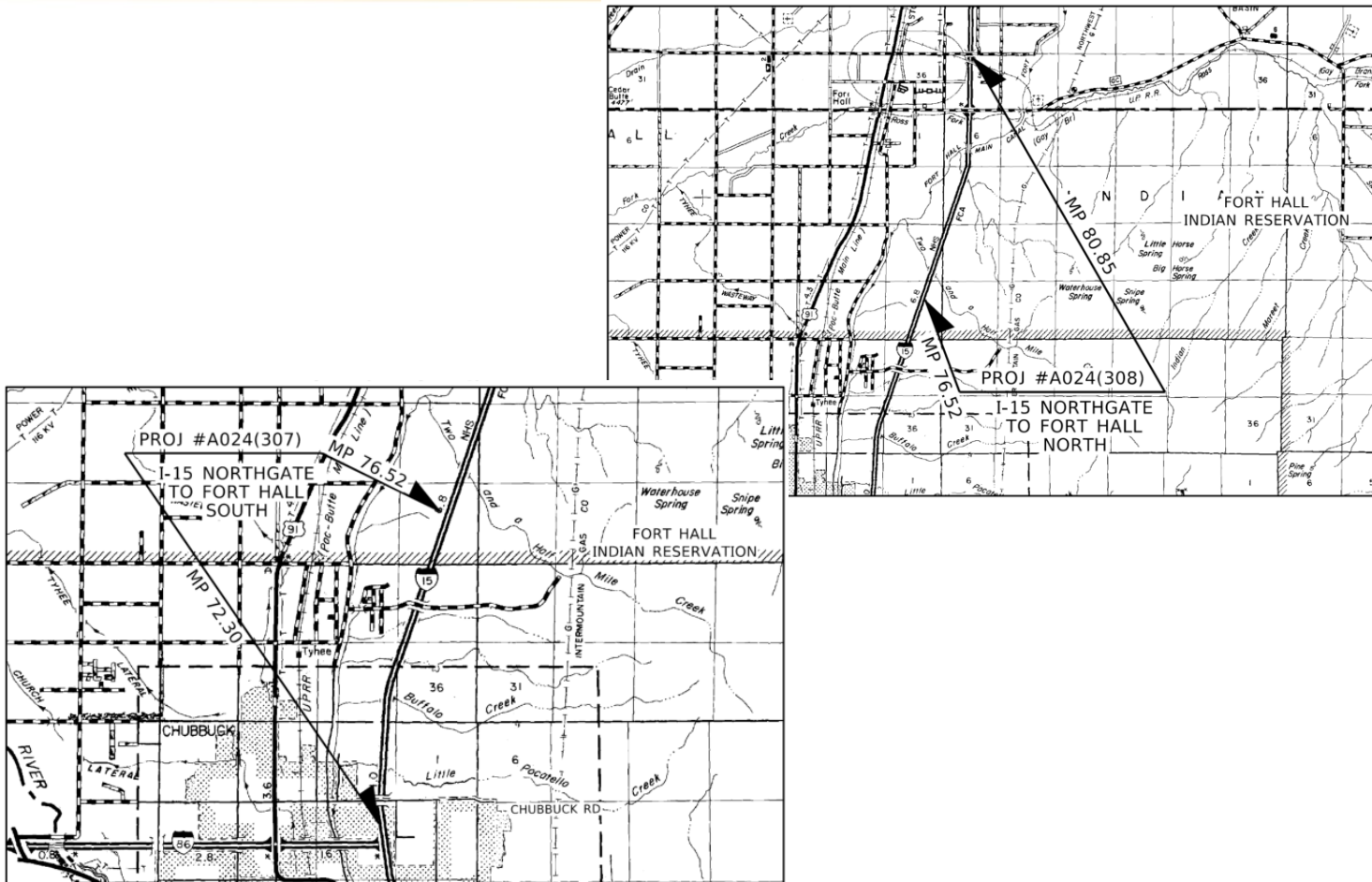


NOT FOR CONSTRUCTION

Pre-Advertise Presentation

April 24, 2024

I-15, Northgate to Fort Hall Widening Projects



NORTHGATE TO FORT HALL

NOT FOR CONSTRUCTION

Safety Topic

- Situational Awareness
- How To Improve Situational Awareness
 - Assess Risks From All Angles
 - Communicate With Others
 - Have Escape Plan
 - Daily Safety Meetings



NORTHGATE TO FORT HALL



NOT FOR CONSTRUCTION

Agenda

- Welcome Remarks
- Safety Topic
- Introductions
- I-15 Northgate to Fort Hall – South Project Overview
 - Project Number A024(307), KN 24307
- I-15 Northgate to Fort Hall – North Project Overview
 - Project Number A024(308), KN 24308
- Questions



NORTHGATE TO FORT HALL

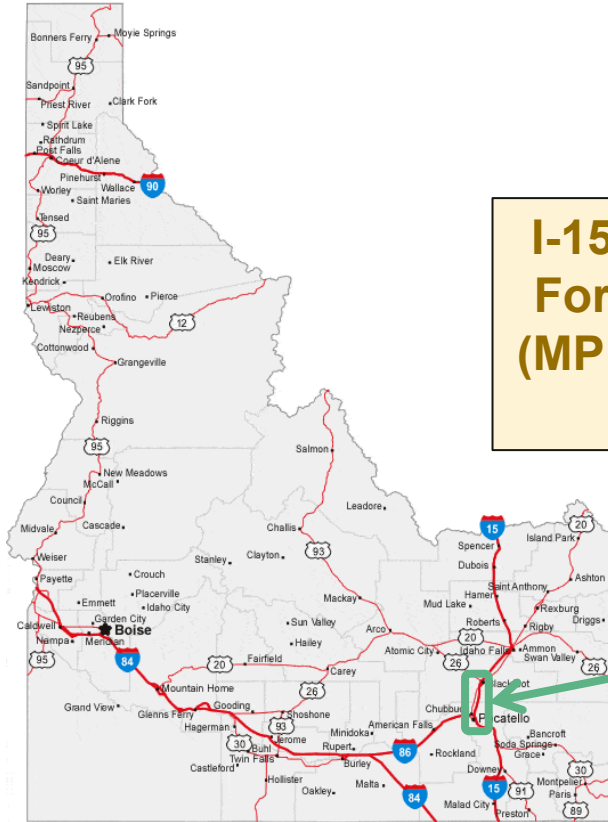


NOT FOR CONSTRUCTION

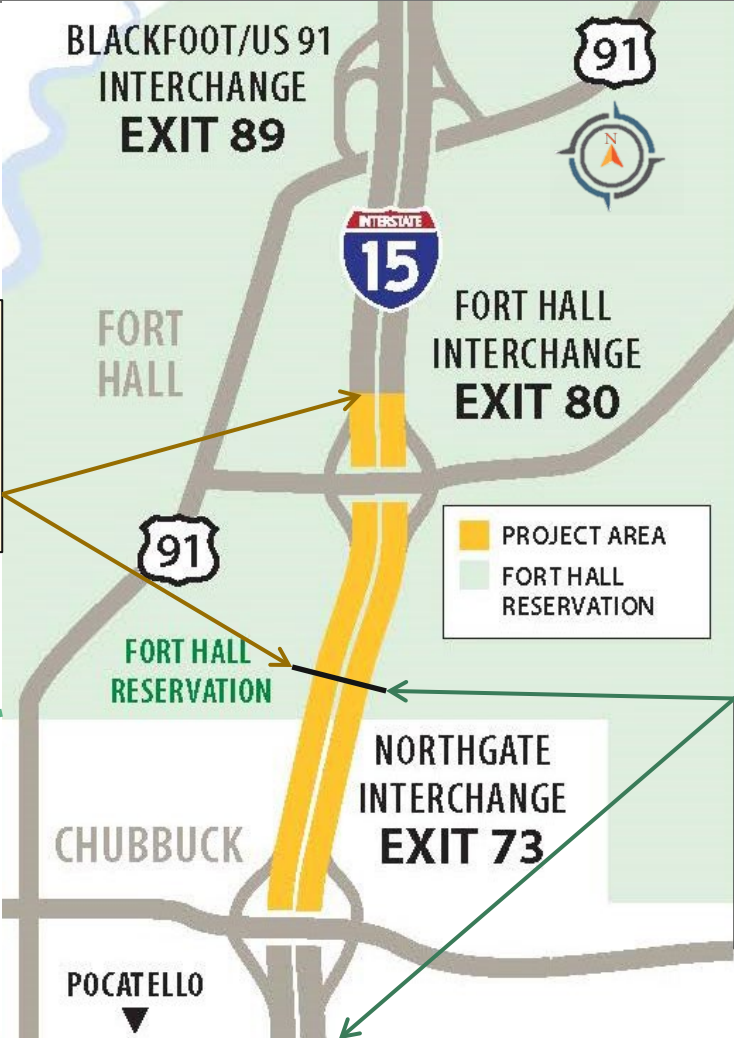
Project Location Map



NORTHGATE TO FORT HALL



**I-15 Northgate to Fort Hall – North
(MP 76.52 – 80.85)
KN 24308**



PROJECT AREA
FORT HALL RESERVATION

**I-15 Northgate to Fort Hall – South
(MP 72.30 – 76.52)
KN 24307**



NOT FOR CONSTRUCTION

Project Overview (Update)



NORTHGATE TO FORT HALL

KN 24307 – South

- Anticipated Advertisement: **May 7th** (5 Weeks)
- Anticipated Cost: \$90M - \$100M
- Construction State Funded
- Begin construction by July/August 2024, Completion by May 2027

KN 24308 – North

- Anticipated Advertisement: **May 7th** (7 Weeks)
- Anticipated Cost: \$95M - \$105M
- Construction State Funded
- Begin construction by July/August 2024, Completion by November 2026



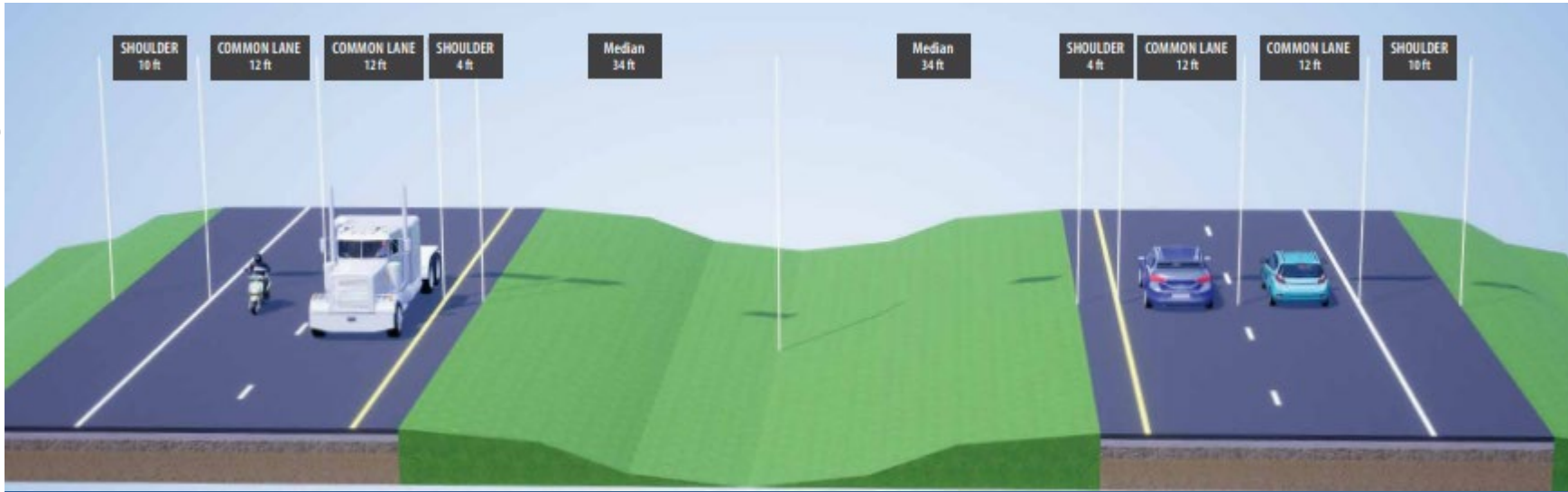
NOT FOR CONSTRUCTION

Project Overview

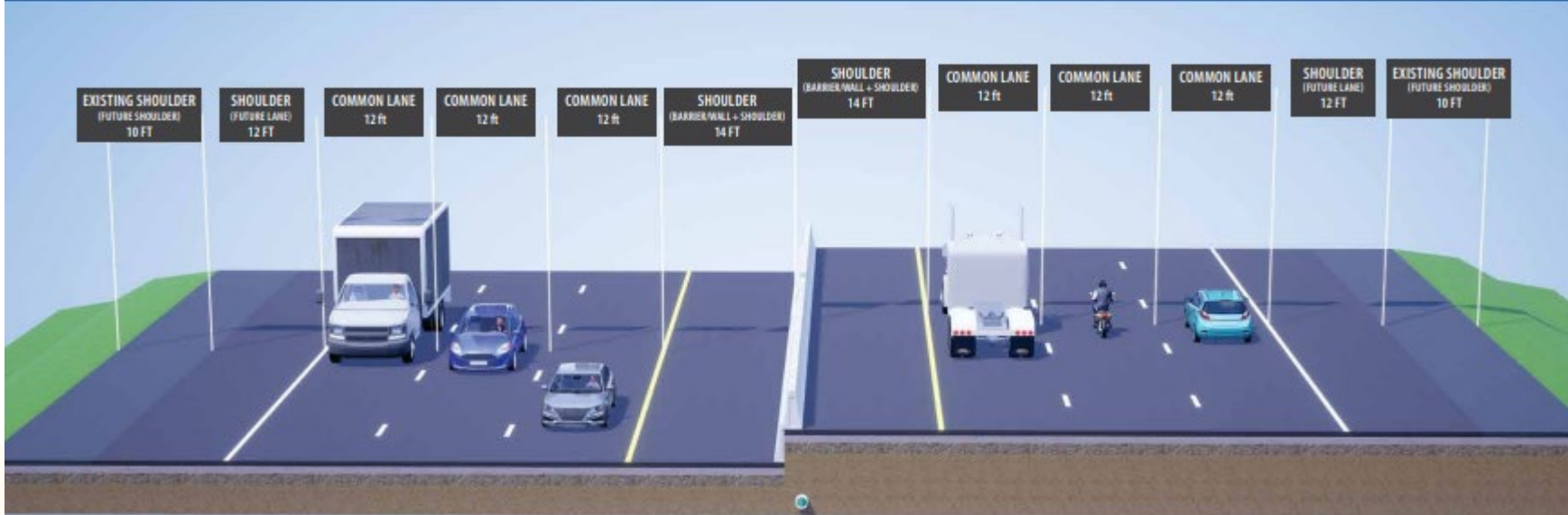


NORTHGATE TO FORT HALL

Existing



Proposed



NOT FOR CONSTRUCTION

Structures Overview



NORTHGATE TO FORT HALL

- North Structures
 - Machine Pass #2
 - Machine Pass #3
 - Fort Hall Main Canal
 - Machine Pass #4
- South Structures
 - 2 ½ Mile Road
 - Machine Pass #1



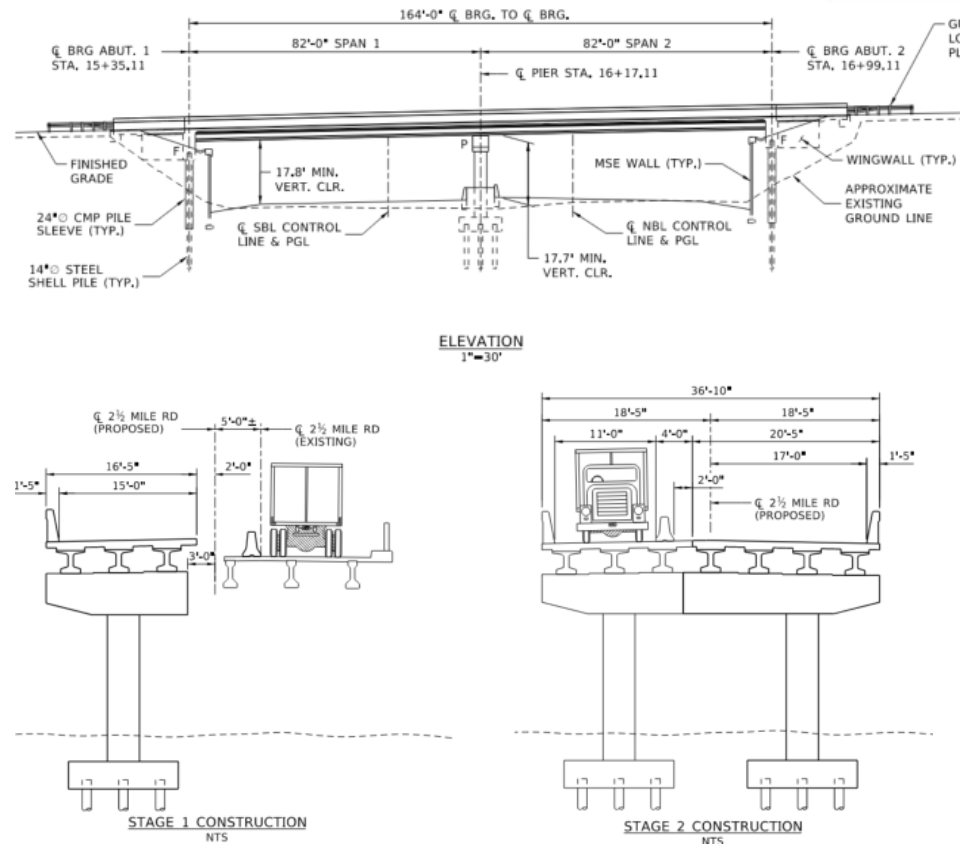
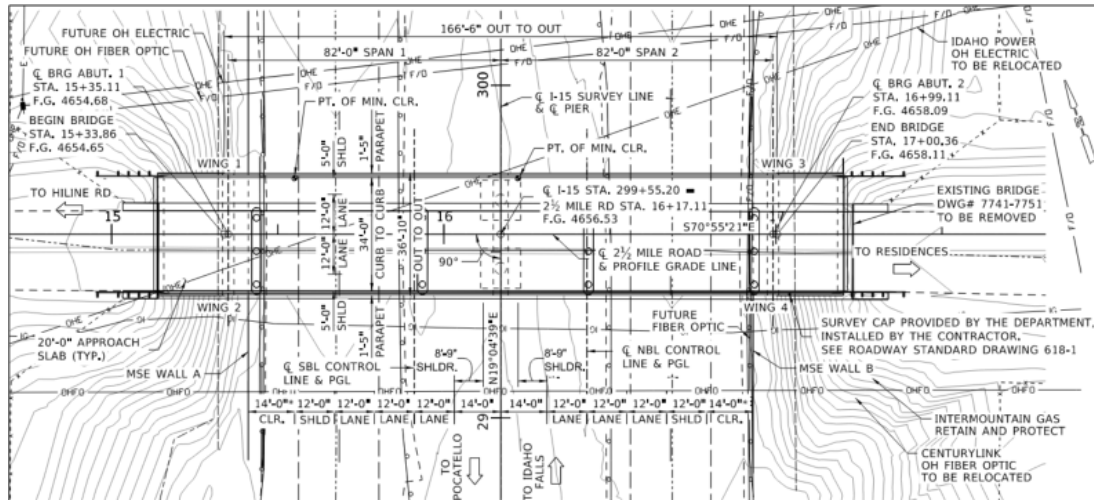
NOT FOR CONSTRUCTION

Structures Overview - South



NORTHGATE TO FORT HALL

- 2 ½ Mile Road
- 2 Span Concrete (164')
- 2 Stages
- Temp Signal



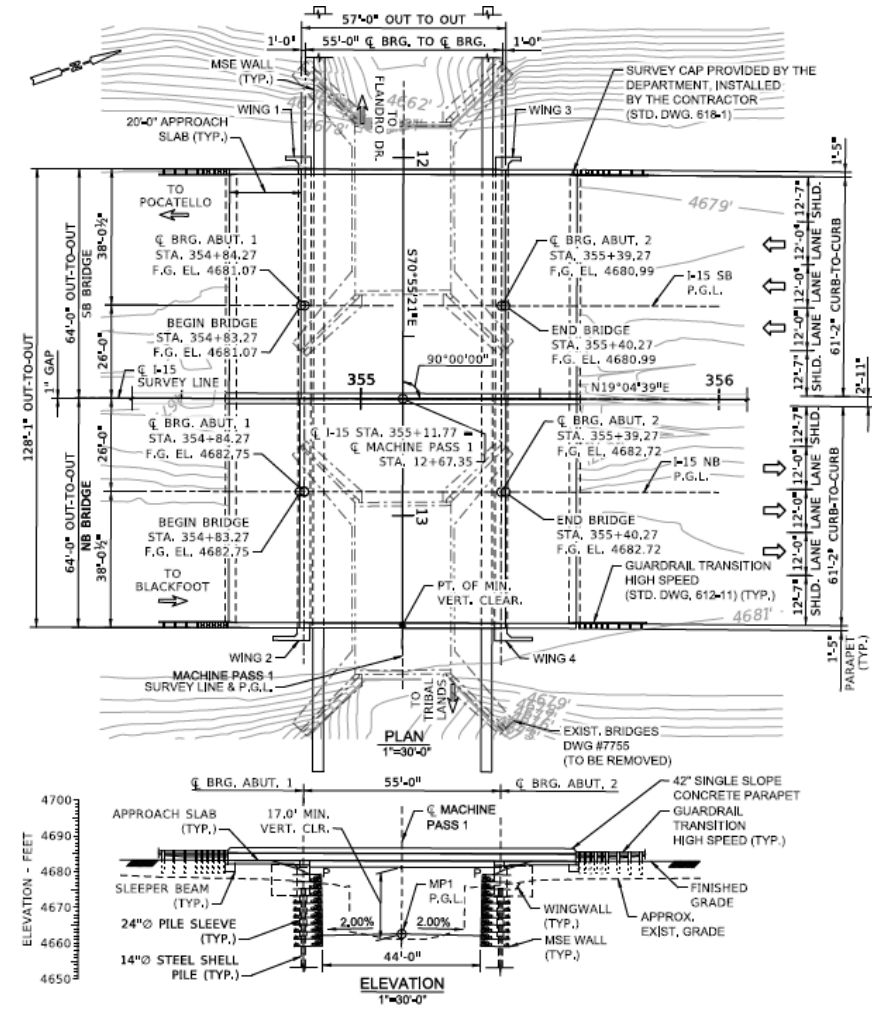
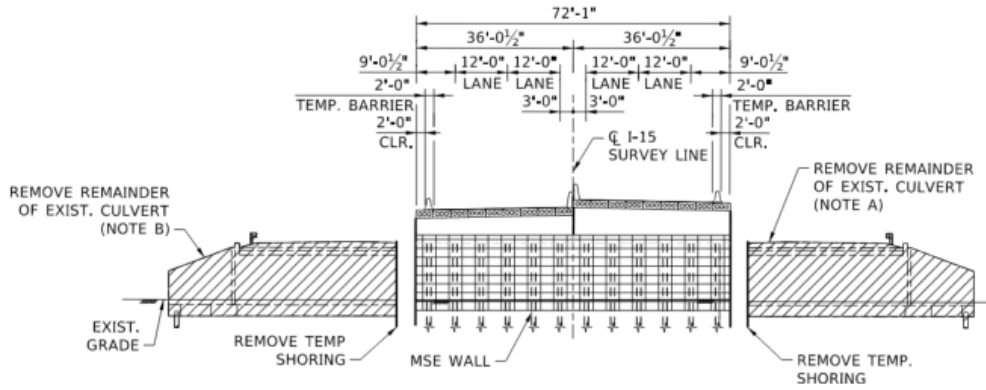
NOT FOR CONSTRUCTION

Structures Overview - South



NORTHGATE TO FORT HALL

- Machine Pass #1
 - Single Span (2 Bridges)
 - Voided Slabs (55')
 - 3 Stages (2 Per Bridge)



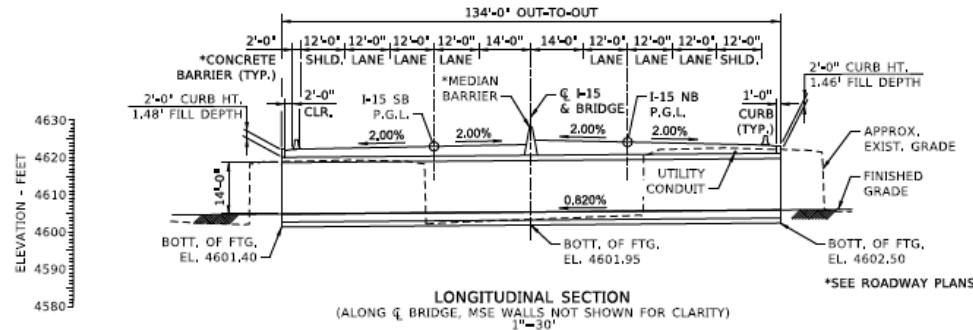
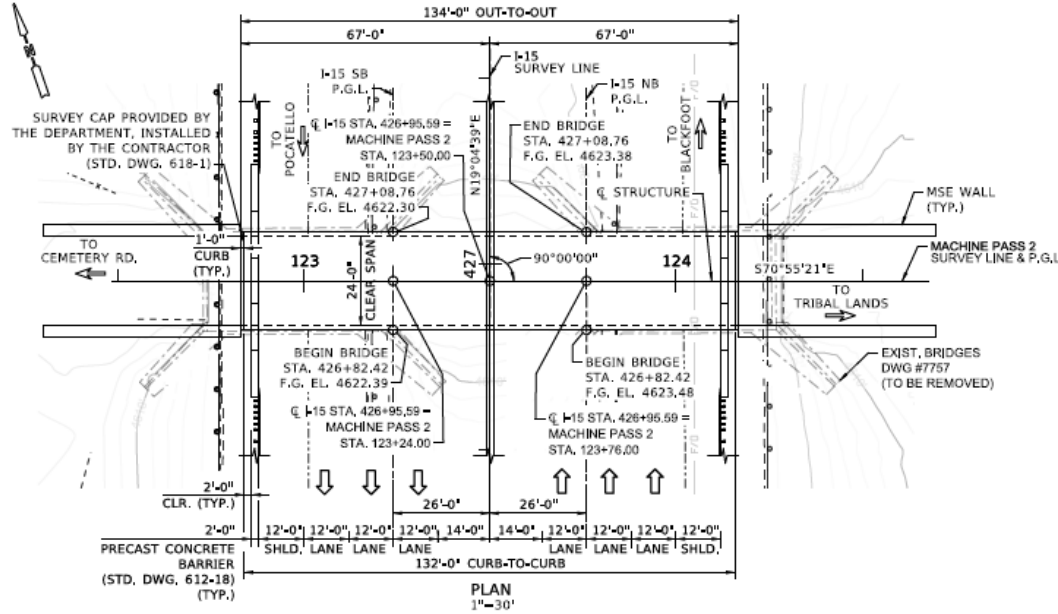
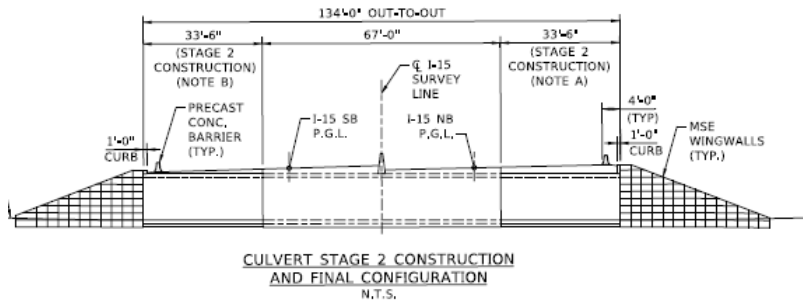
NOT FOR CONSTRUCTION

Structures Overview - North



NORTHGATE TO FORT HALL

- Machine Pass #2
 - 12' Stiffleg Culvert (134')
 - 3 Stages



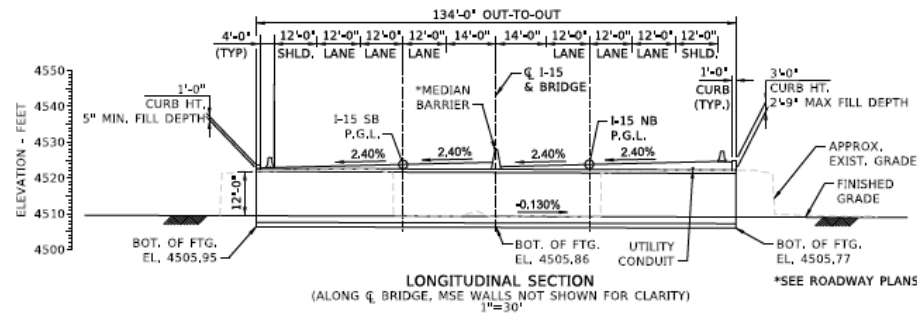
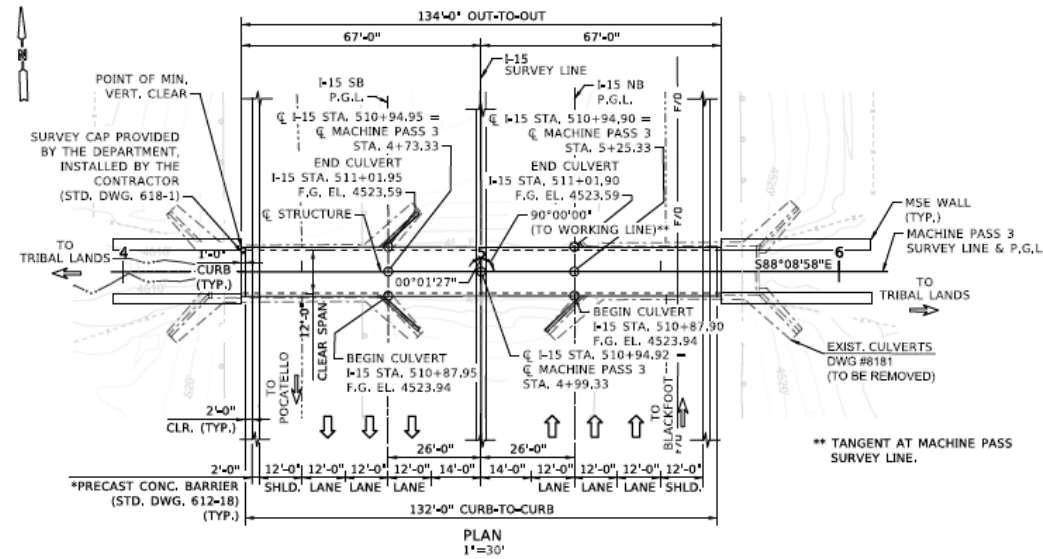
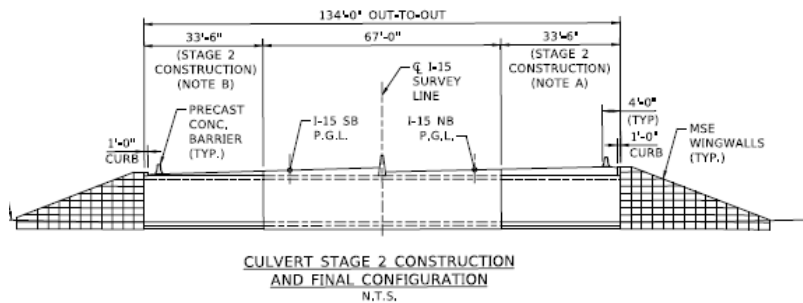
NOT FOR CONSTRUCTION

Structures Overview - North



NORTHGATE TO FORT HALL

- Machine Pass #3
 - 12' Stiffleg Culvert (134')
 - 3 Stages



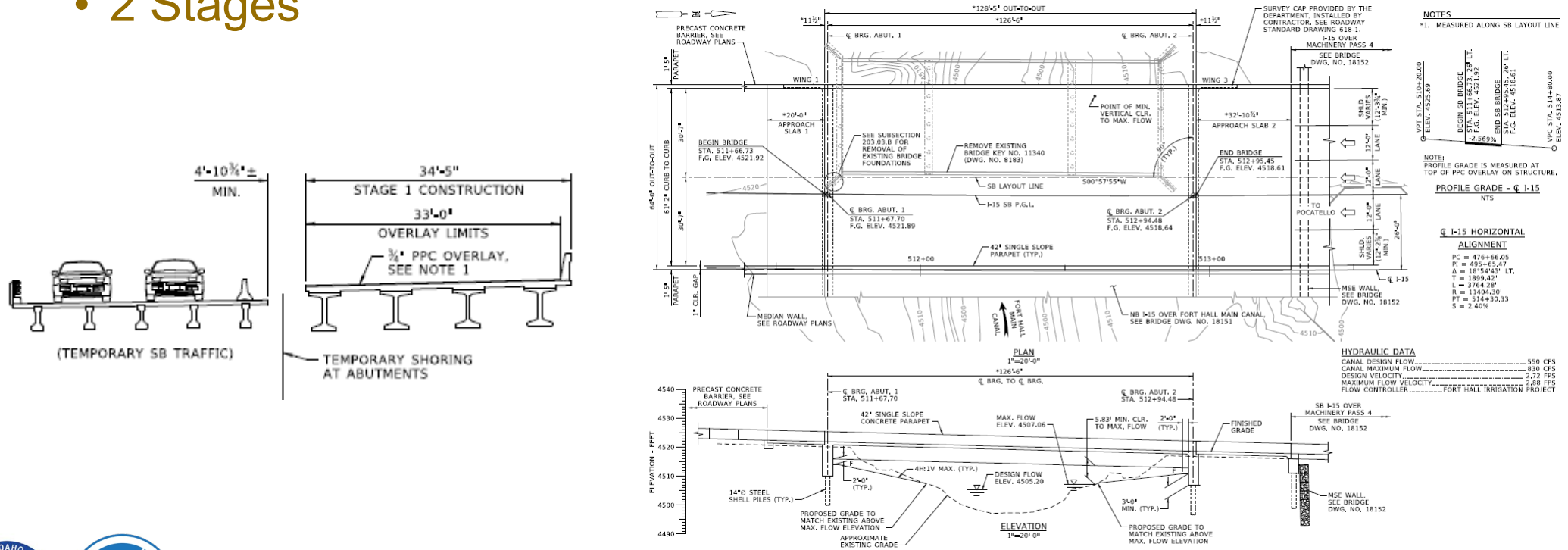
NOT FOR CONSTRUCTION

Structures Overview - North



NORTHGATE TO FORT HALL

- Fort Hall Main Canal – SB
 - 1 Span Concrete (126'-6")
 - 2 Stages



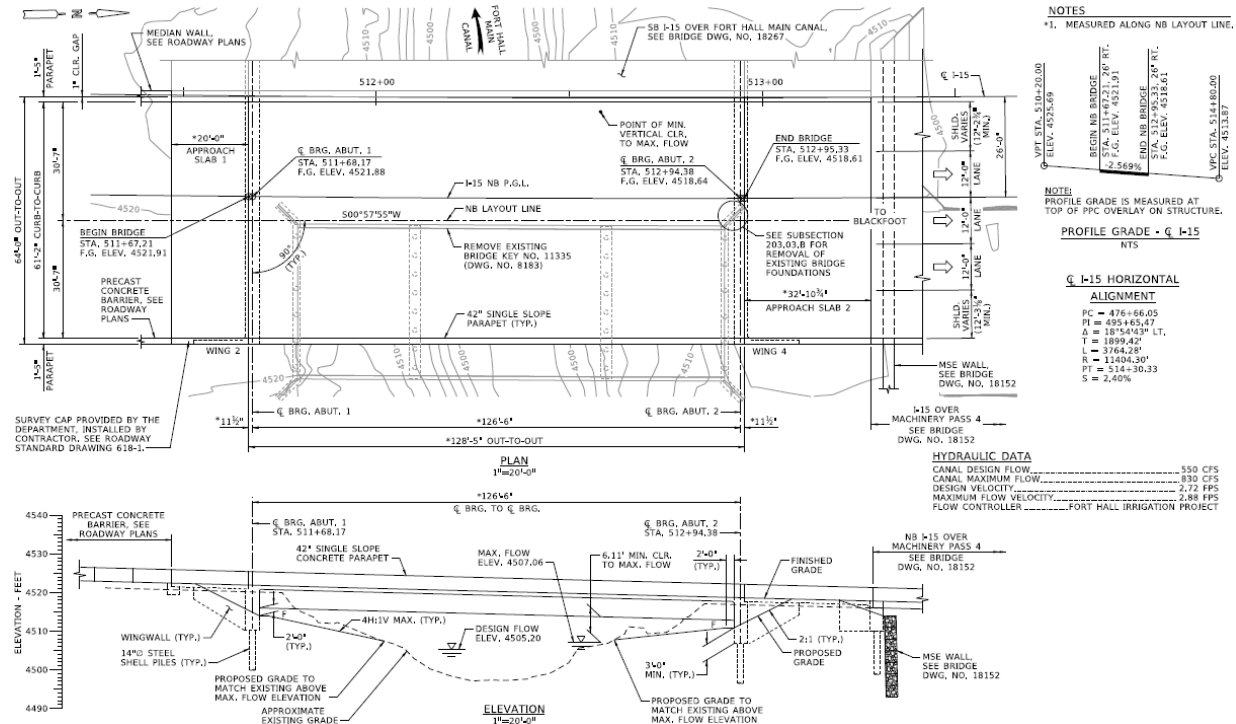
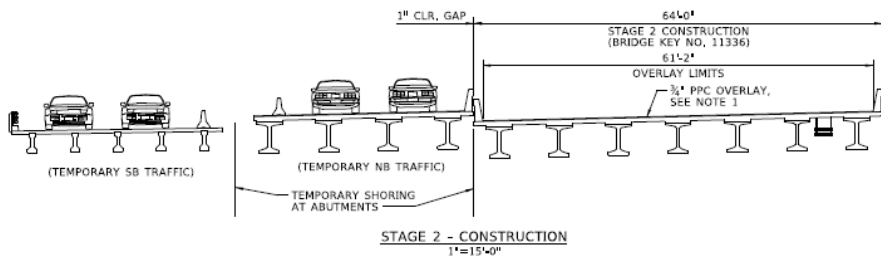
NOT FOR CONSTRUCTION

Structures Overview - North



NORTHGATE TO FORT HALL

- Fort Hall Main Canal – NB
 - 1 Span Concrete (126'-6")
 - 1 Stage



NOT FOR CONSTRUCTION

I-15 Northgate to Fort Hall – South



NORTHGATE TO FORT HALL

KN 24307 – Approximate Quantities

• 178,000 SY	Topsoil	• 12,000 CY	Concrete Class 40 AF (Median Barrier/Wall)
• 245,000 CY	Excavation	• 620 CY	Concrete Class 40 (Structures)
• 106,000 CY	Borrow	• 782,000 LB	Epoxy Coated Metal Reinforcement
• 17,000 CY	Granular Borrow	• 1,150 FT	Concrete Bridge Girders
• 28,000 CY	Granular Subbase	• 1,800 FT	Prestressed Slab
• 302,000 TON	3/4" Base	• 5,300 FT	Steel Shell Pile
• 151,000 SY	Pulverize Existing Surface	• 8,800 SF	SP Large Gravity Block Retaining Wall
• 257,000 SY	SP Cement Stabilized Soil	• 13,000 SF	MSE Retaining Wall
• 137,000 TON	HMA SP-5 (Perm)	• 1,800 FT	Pipe Jacking
• 14,000 TON	HMA SP-5 (Temp)	• 29,000 FT	W-Beam Guardrail
• 16,000 FT	Wildlife Fence	• 52,000 FT	Temporary Concrete Barrier



NOT FOR CONSTRUCTION

I-15 Northgate to Fort Hall – North



NORTHGATE TO FORT HALL

KN 24308 – Approximate Quantities

• 323,000 SY	Topsoil	• 13,600 CY	Concrete Class 40 AF (Median Barrier/Wall)
• 248,000 CY	Excavation	• 1,900 CY	Concrete Class 40 (Structures)
• 166,000 CY	Borrow	• 897,000 LB	Epoxy Coated Metal Reinforcement
• 13,000 CY	Granular Subbase	• 1,790 FT	Concrete Bridge Girders
• 274,000 TON	3/4" Base	• 1,830 FT	Prestressed Slab
• 218,000 SY	Pulverize Existing Surface	• 5,200 FT	Steel Shell Pile
• 366,000 SY	SP Cement Stabilized Soil	• 9,600 SF	MSE Retaining Wall
• 152,000 TON	HMA SP-5 (Perm)	• 3,200 FT	Pipe Jacking
• 11,000 TON	HMA SP-5 (Temp)	• 11,000 FT	W-Beam Guardrail
• 27,000 FT	Wildlife Fence	• 70,000 FT	Temporary Concrete Barrier



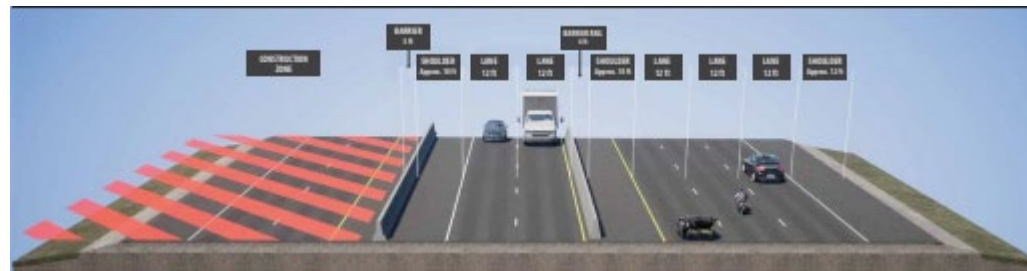
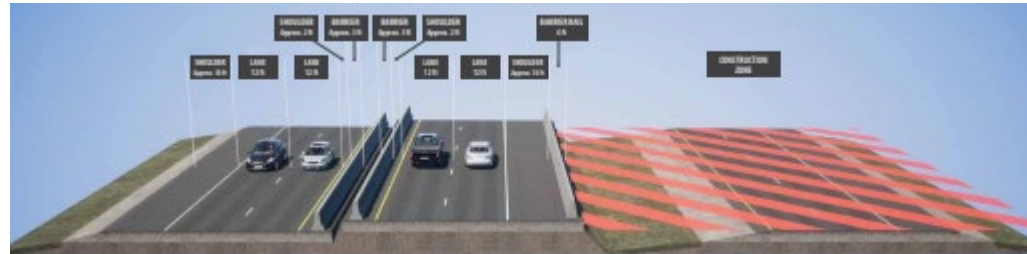
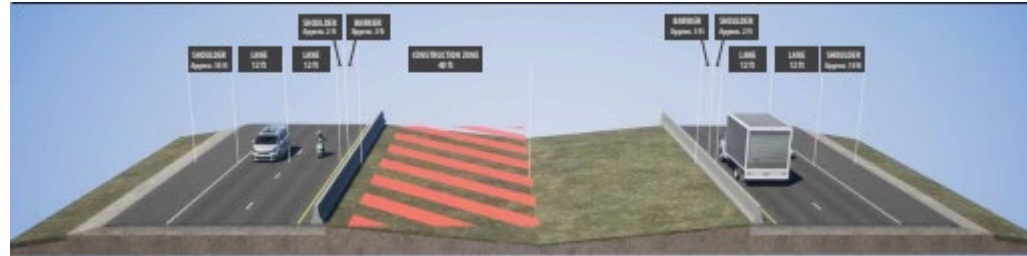
NOT FOR CONSTRUCTION

Staging Overview



NORTHGATE TO FORT HALL

- Stage 1 & 2
 - S1 Temp Widening
 - S2 Construct 1/2 SB Median Side
- Stage 3
 - Construct NB (All)
- Stage 4
 - Construct 1/2 SB Shoulder Side

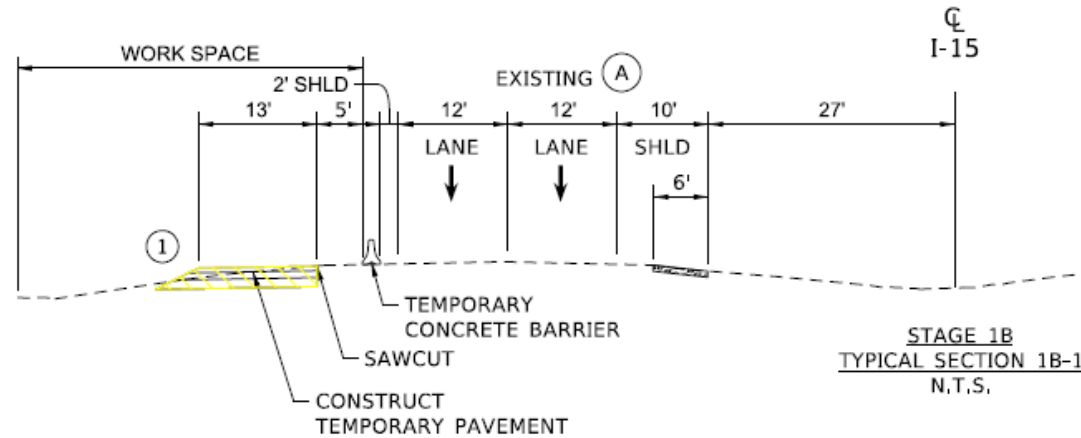
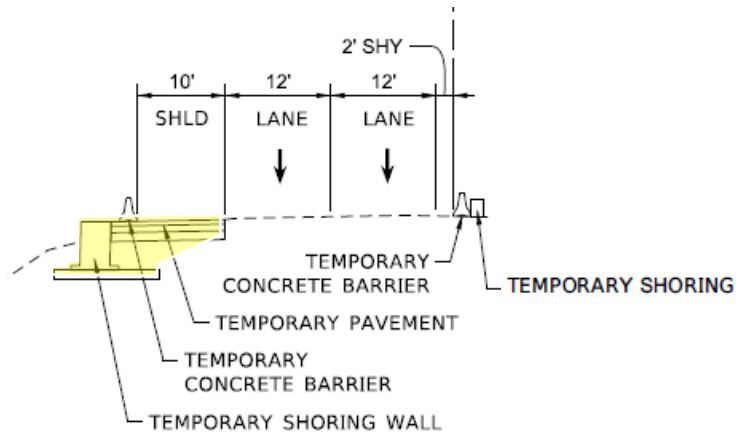
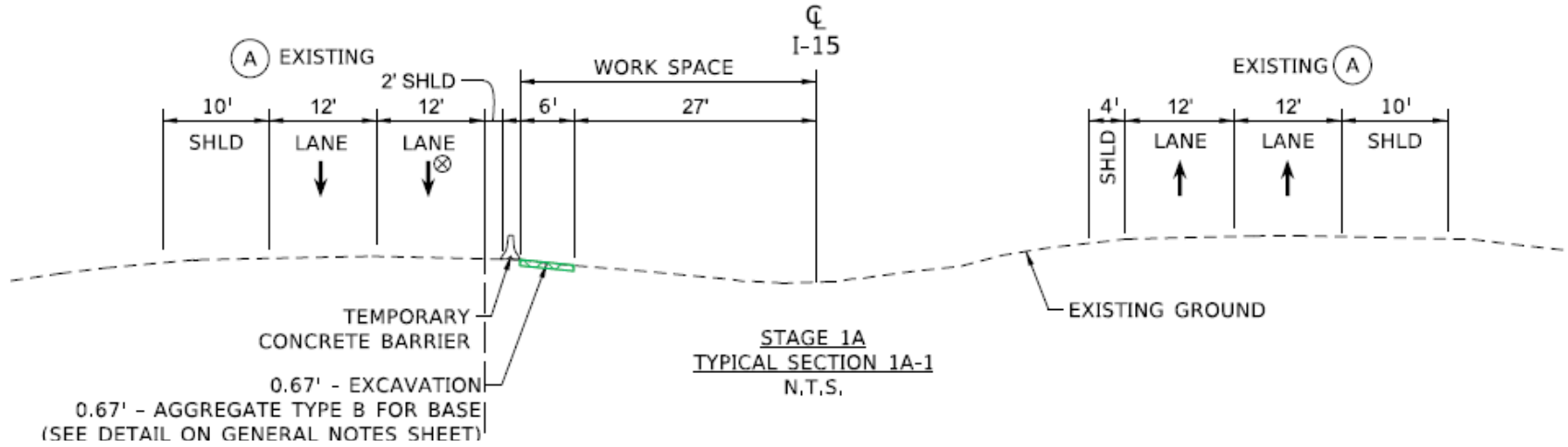


NOT FOR CONSTRUCTION

Staging Overview – Stage 1



NORTHGATE TO FORT HALL

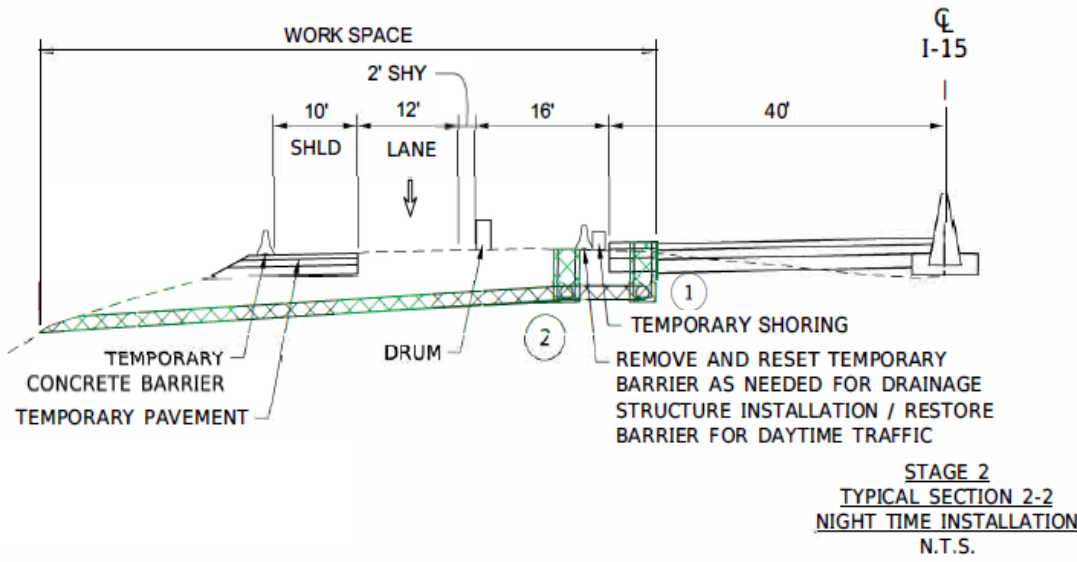
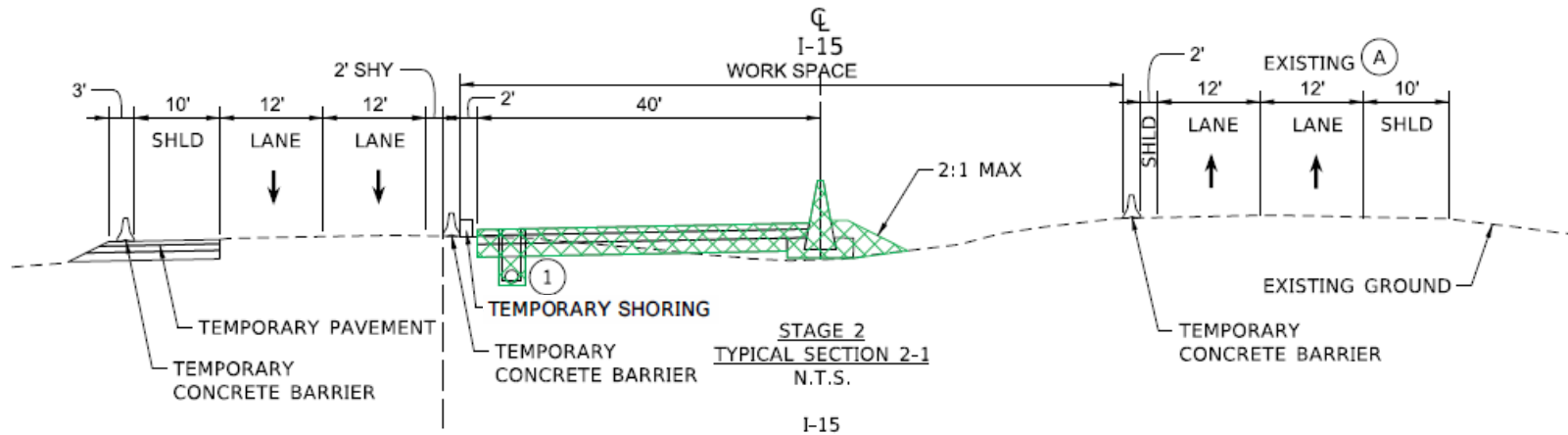


NOT FOR CONSTRUCTION

Staging Overview – Stage 2



NORTHGATE TO FORT HALL

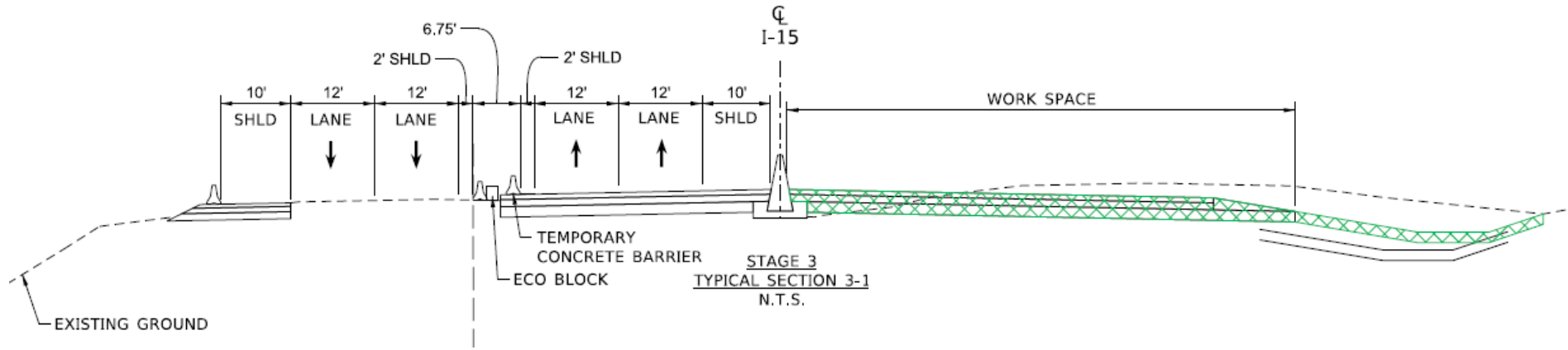


NOT FOR CONSTRUCTION

Staging Overview – Stage 3



NORTHGATE TO FORT HALL

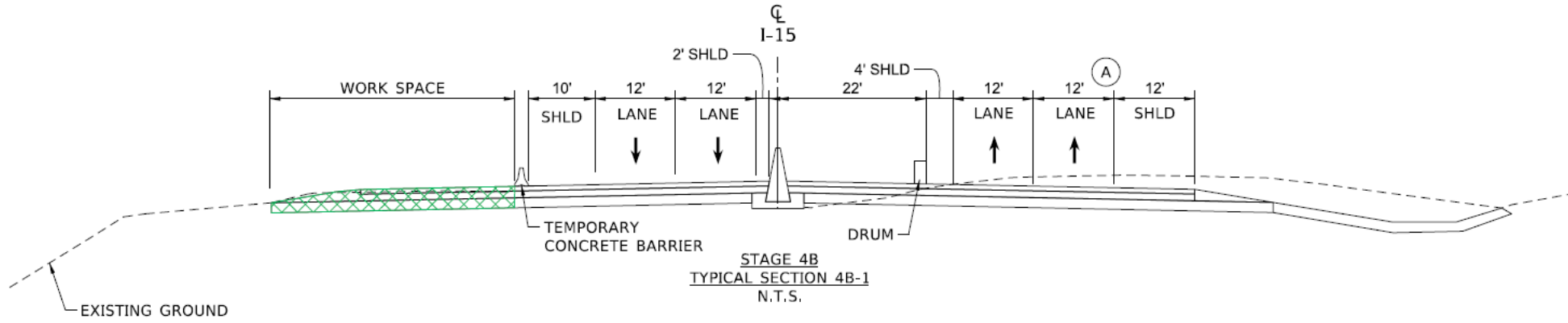


NOT FOR CONSTRUCTION

Staging Overview – Stage 4



NORTHGATE TO FORT HALL



NOT FOR CONSTRUCTION

Lane Closures/Night Restrictions

- No lane closures during peak travel hours
 - Peak travel hours are 6:00 AM through 7:00 PM daily
- Coordinate closures with the Engineer and D5 Public Information Officer.



NORTH
GATE
TO
FORT
HALL



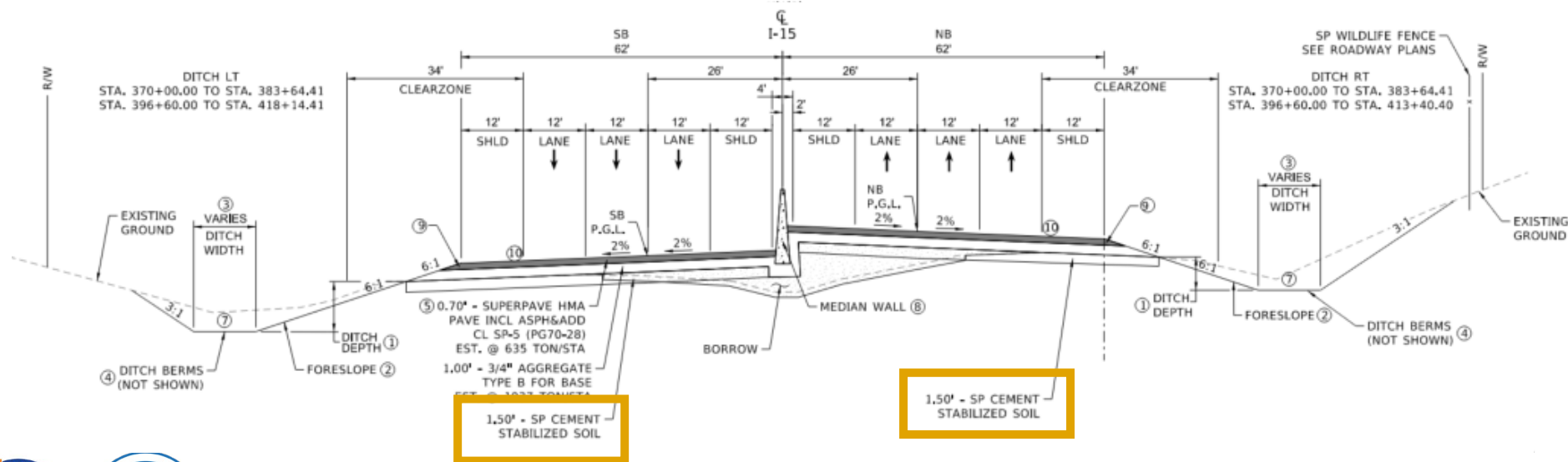
NOT FOR CONSTRUCTION

Cement Stabilized Soil Operations



NORTHGATE TO FORT HALL

- Pulverize Existing Pavement
 - Blend with Existing Material
- Grade Layer to be Stabilized
 - Existing Material or Import
- Mix\Blend Cement
- Compact
- Compaction Testing



NOT FOR CONSTRUCTION

Variable Speed Limit

- Both Projects Utilize a Variable Speed Limit System



NORTHGATE TO FORT HALL



NOT FOR CONSTRUCTION

Specification Highlight



NORTHGATE TO FORT HALL

- Section 629 – Mobilization
 - “After contract award, and upon written request by the Contractor, the Department will issue the first progress payment up to **20 percent of the contract unit price or 2 percent of the total contract amount**, whichever is less. Productive work on the project is not required for this payment.” (629.05 Basis of Payment)



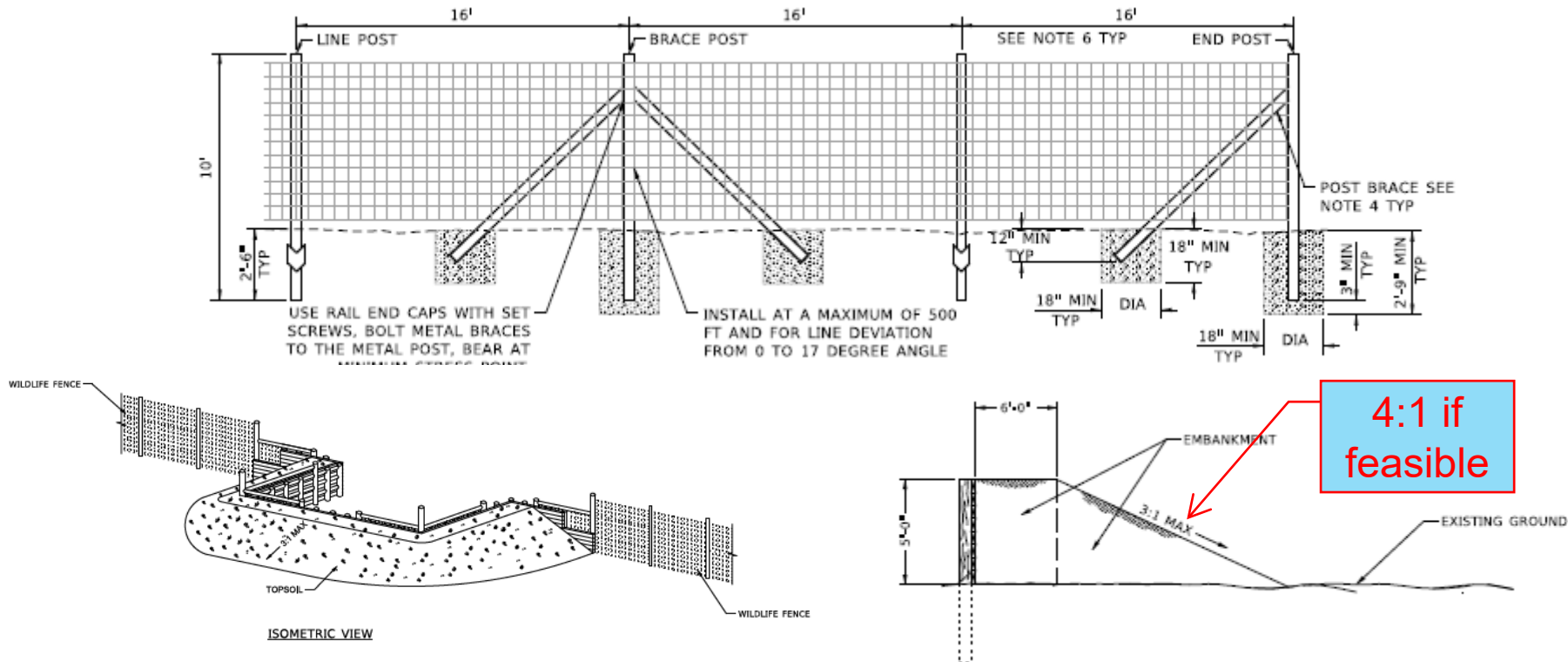
NOT FOR CONSTRUCTION

Wildlife Fence (Update)



NORTHGATE TO FORT HALL

- Installed on Eastern R/W
 - Multiple Types of Jump Outs



NOT FOR CONSTRUCTION

Questions

I-15 Northgate to Fort Hall – South
(MP 72.30 – 76.52) KN 24307



I-15 Northgate to Fort Hall – North
(MP 76.52 – 80.85) KN 24308



NORTHGATE TO FORT HALL



NOT FOR CONSTRUCTION

Contact:

- **Jeff Nettleton – TECM Project Manager**

- Phone: 208-334-8724
- Email: Jeff.Nettleton@itd.idaho.gov

- More information can be found on the project website:
<https://itdprojects.idaho.gov/pages/i15northgatetoblackfoot>



NORTHGATE TO FORT HALL

