

Click this link named [Culdesac Canyon Passing Lane, Phase 2](#)

Use the information below to login to ProjectWise

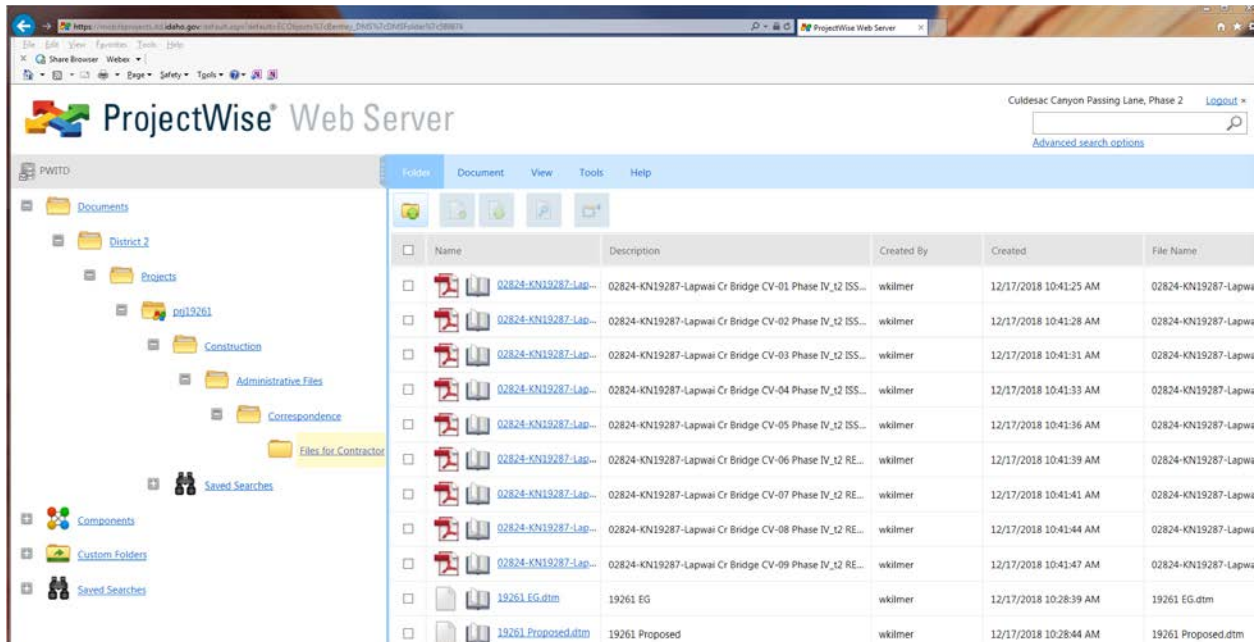
User Name: Culdesac Canyon Passing Lane, Phase 2

Password: 19261



The login form for ProjectWise Web Server includes a logo at the top left. Below it is a 'Location' dropdown menu with 'PWITD' selected. The 'User Name' field contains 'Culdesac Canyon Passing Lane, Phase 2'. The 'Password' field is masked with six dots. A green 'Log in' button is positioned at the bottom right of the form.

You will be directed to this page seen below:

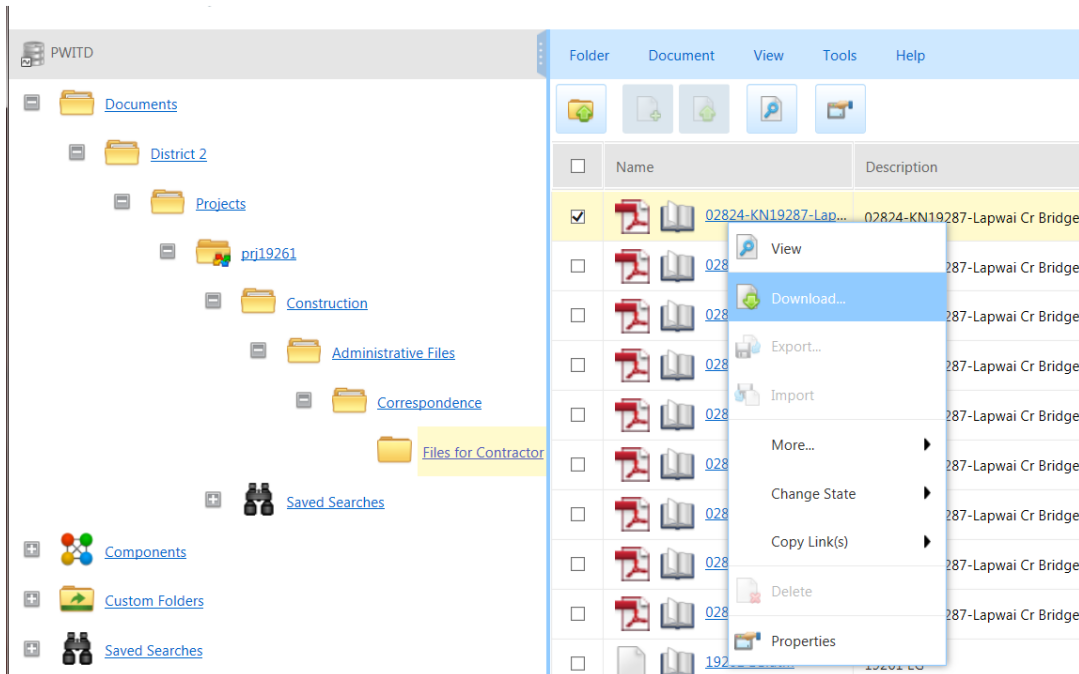


The screenshot shows the ProjectWise Web Server interface in a browser. The left sidebar displays a folder tree for 'PWITD', including 'Documents', 'District 2', 'Projects', 'pgi19261', 'Construction', 'Administrative Files', 'Correspondence', 'Files for Contractor', 'Saved Searches', 'Components', 'Custom Folders', and 'Saved Searches'. The main area shows a table of files with columns for Name, Description, Created By, Created, and File Name. The table lists 11 files, including 9 '02824-KN19287-Lapwa...' files and 2 '19261' files.

Name	Description	Created By	Created	File Name
02824-KN19287-Lapwa...	02824-KN19287-Lapwai Cr Bridge CV-01 Phase IV_12 ISS...	wkilmr	12/17/2018 10:41:25 AM	02824-KN19287-Lapwa...
02824-KN19287-Lapwa...	02824-KN19287-Lapwai Cr Bridge CV-02 Phase IV_12 ISS...	wkilmr	12/17/2018 10:41:28 AM	02824-KN19287-Lapwa...
02824-KN19287-Lapwa...	02824-KN19287-Lapwai Cr Bridge CV-03 Phase IV_12 ISS...	wkilmr	12/17/2018 10:41:31 AM	02824-KN19287-Lapwa...
02824-KN19287-Lapwa...	02824-KN19287-Lapwai Cr Bridge CV-04 Phase IV_12 ISS...	wkilmr	12/17/2018 10:41:33 AM	02824-KN19287-Lapwa...
02824-KN19287-Lapwa...	02824-KN19287-Lapwai Cr Bridge CV-05 Phase IV_12 ISS...	wkilmr	12/17/2018 10:41:36 AM	02824-KN19287-Lapwa...
02824-KN19287-Lapwa...	02824-KN19287-Lapwai Cr Bridge CV-06 Phase IV_12 RE...	wkilmr	12/17/2018 10:41:39 AM	02824-KN19287-Lapwa...
02824-KN19287-Lapwa...	02824-KN19287-Lapwai Cr Bridge CV-07 Phase IV_12 RE...	wkilmr	12/17/2018 10:41:41 AM	02824-KN19287-Lapwa...
02824-KN19287-Lapwa...	02824-KN19287-Lapwai Cr Bridge CV-08 Phase IV_12 RE...	wkilmr	12/17/2018 10:41:44 AM	02824-KN19287-Lapwa...
02824-KN19287-Lapwa...	02824-KN19287-Lapwai Cr Bridge CV-09 Phase IV_12 RE...	wkilmr	12/17/2018 10:41:47 AM	02824-KN19287-Lapwa...
19261_EG.dtm	19261 EG	wkilmr	12/17/2018 10:28:39 AM	19261_EG.dtm
19261_Proposed.dtm	19261 Proposed	wkilmr	12/17/2018 10:28:44 AM	19261_Proposed.dtm

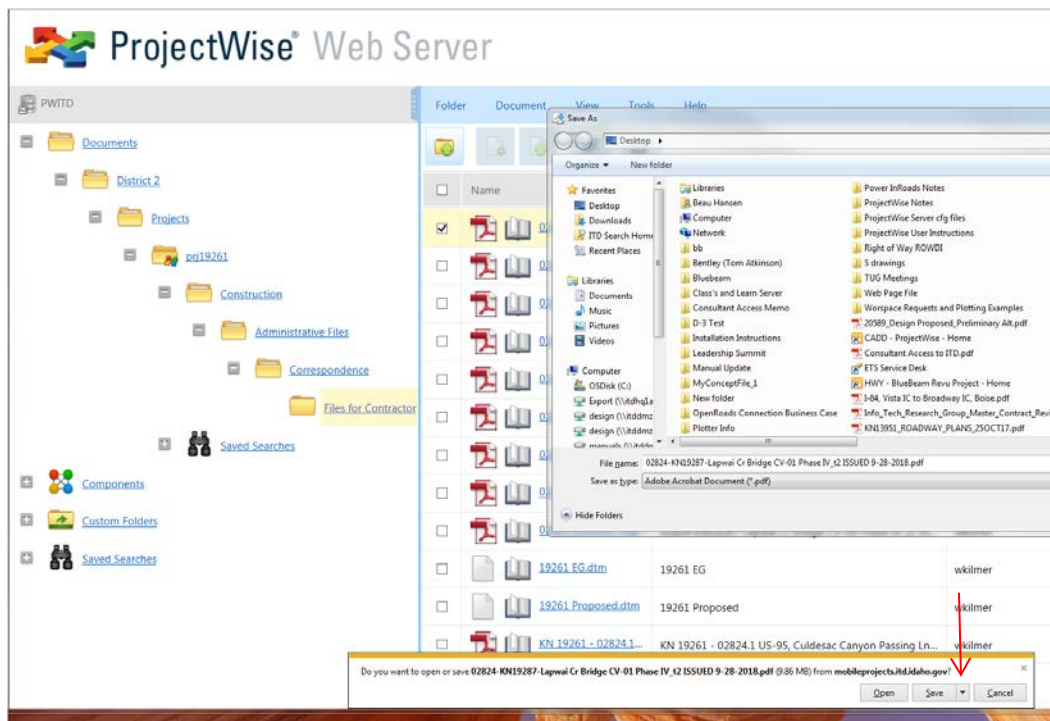
You may need to navigate to the correct folder containing the documents with the + sign next to the folders.

You will then see the documents listed available for download. You will then **Right Click** on the documents and you will see the options listed below



Click **Download**

And this screen should appear:



Click the down Arrow next to Save and select Save As. The smaller Save As box will appear and you can then select your computers location to save the files. Only One document can be downloaded at a time. Repeat these steps for any and/or all additional bid documents

If you have any problems with the link or any other questions please Contact:

Beau Hansen

CADD/ProjectWise Administrator

ITD HQ OTS | beau.hansen@itd.idaho.gov | (W) 208-334-8494

