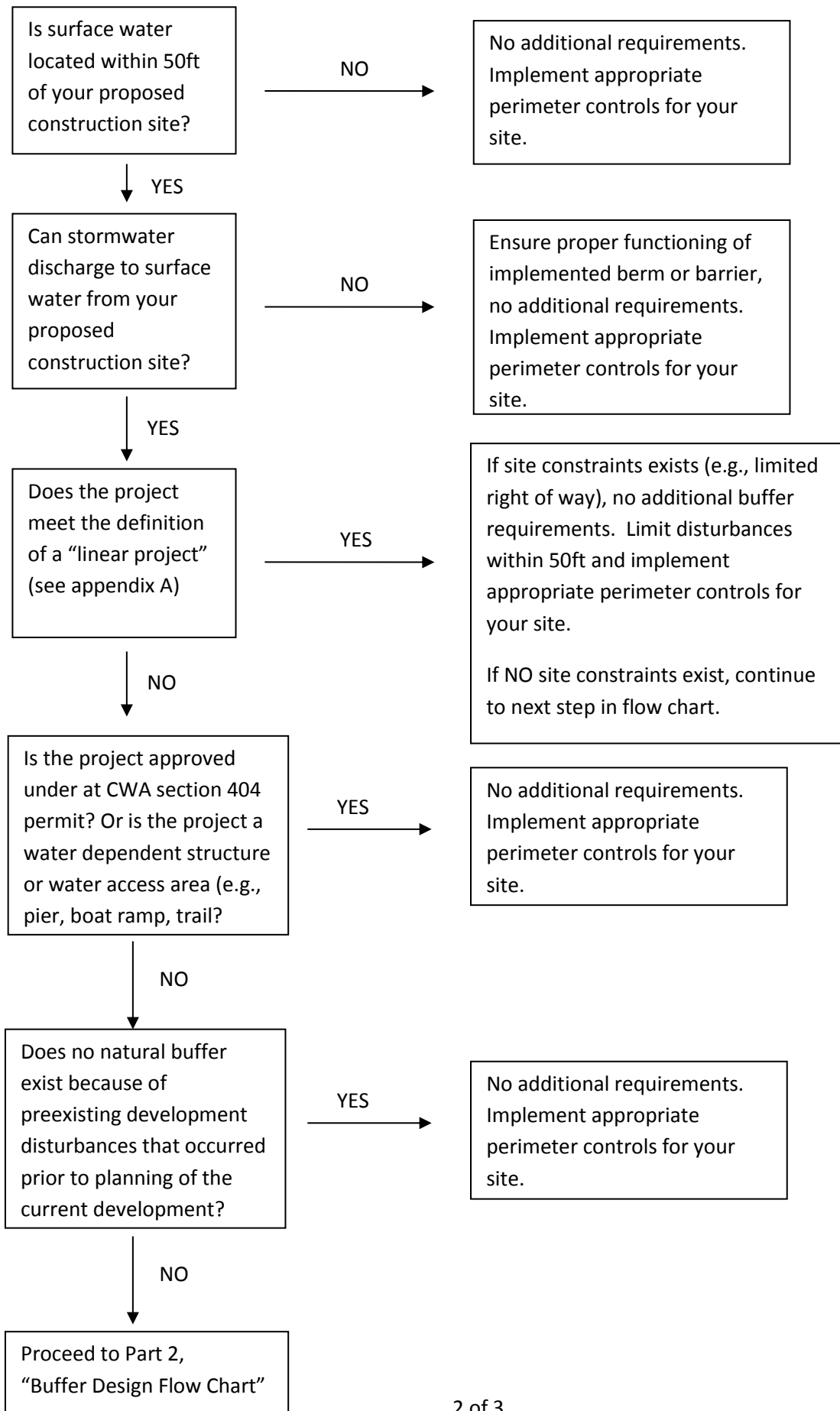


# Buffer Requirement Guidance

The 2017 Construction General Permit, Section 2.2.1 requires that a natural buffer be maintained on construction sites within 50ft of surface water. See below **beginning on page 2**, the following flow charts are meant to aid planners and engineers in deciding how to apply the requirements and exemptions to their construction site by summarizing these details in a logical flow chart. Close coordination with the District Environmental Planner is still required before proceeding with a course of action.

For further information or help using these charts, contact Matt Carlson, ITD HQ Environmental, 334-8631.

# Part 1: Buffer Decision Flow Chart



# Part 2: Buffer Design Flow Chart

