

ITD Key No. 19134 – US-93, 100 South Road, Jerome County

Project Description: The Idaho Transportation Department (ITD) District 4 is proposing improvements to US-93 in Jerome County. The 2.248-mile project is proposed from milepost 57.238, south of E. 100 South Road, to milepost 59.486, north of the intersection with SH-25 and immediately south of Butte Road. Local roads that intersect US-93 within the project area include E. 100 South and SH-25. The project design has been developed with a focus on improving capacity and safety through the corridor.

The proposed actions will construct a four-lane roadway divided by a median with defined access control where highway access is limited to county roadways at one-half mile intervals. Access will be provided to properties that already have access onto US-93; the use of right-in and right-out access is supported by a non-traversable divided median.

The existing roadway is generally a two-lane roadway with 12-foot travel lanes and shoulder widths that vary from 6 to 10 feet. The two-way stop controlled intersection at SH-25/US-93 has two northbound and two southbound through lanes. The proposed roadway will have four through lanes (each at 12 feet wide each) with a center non-traversable divided median. The center median can range between 12 to 16 feet to manage side-friction safety and to facilitate snow removal. The inside shoulder width shall be a minimum of 4 feet and outside shoulder shall be a minimum of 8 feet. Roadway tapers conclude within the identified project limits. The existing intersections with public roads (100 South Road and SH-25), will have full improvements with turn movements allowed in all directions. Frontage roads will be designed as needed for property access.

A portion of the project is located on BLM easement. Existing right-of-way easement is 400 feet wide. The entire 400 feet easement will be used for the construction of four lanes and the future bicycle/pedestrian path. The BLM easement for 100 South on Jerome Highway district will also be used to add the turn lanes on the county road approaching US-93.

Project History: These project actions were originally proposed in 2000 under ITD Key No. 7800 (US-93 Petro II to Barrymore). The original project included the widening of US-93 from mileposts 53.63 to 59.0. The proposed actions for the length of the corridor were “adding two lanes, one in each direction, and a median to the existing two-lane facility” and intersection improvements. In September 2000, archaeologists from Shapiro and Associates (Camille Sayer and Taya Sundell) surveyed the corridor. In the report they note that “the BLM portion of the project was surveyed under Cultural Resources Use Permit ID-I-33633 and received complete coverage.” There were no cultural resources identified within the area of potential effect for these 2018 actions. A number of addendums were prepared for the project, but none for the northern section. Due to a lack of funding, this northern portion of the project was never completed.

Since the original survey, there is at least one property within the APE that has turned 50 years (Bragg House, constructed 1956).



N↑

end US-93
MP 59.5

Start SH-25

end SH-25

Bragg
house

C5
Farms

100 S.

US-93 Start +
MP 57.2

work on 100S.

K19134

Google Earth

Imagery Date: 6/8/2016 42°43'15.62" N 114°26'13.67" W elev 4085 ft eye alt 28267 ft

Looking at Driscoll's, east of US-93
also known as CJ Farms



© 2018 Google

© 2018 Google

K 19134
Google Earth



N↑

end job

K19134

60

100 North Rd

59

93

Butte Dr

25

5

45-N

N 500 E

© 2018 Google

Google Earth

Imagery Date: 6/8/2016 42°43'59.16" N 114°26'18.86" W elev 4120 ft eye alt 13264 ft



Figure 4: Signalization of Existing Intersection



Bragg's From SH-25, facing south.
South west corner of US-93 + SH-25


SH-25

© 2018 Google

© 2018 Google

Google Earth

[Report a problem](#)

42°43'24.09" N 114°26'39.16" W elev 4073 ft eye alt 4067 ft 



From US-93, looking east at Building A



From US-93, looking east at
Building B

\$USERNAMES	\$DATES	\$TIMES
\$FILES		

\$USERNAMES	\$DATES	\$TIMES
\$FILES		

\$USERNAMES	\$DATES	\$TIMES
\$FILES		

\$USERNAMES\$	\$DATES\$	\$TIMES\$
\$FILES\$		

\$USERNAMES	\$DATES	\$TIMES
\$FILES		

\$USERNAMES\$	\$DATES\$	\$TIMES\$
\$FILES\$		



\$USERNAMES\$	\$DATES\$	\$TIMES\$
\$FILES\$		

\$USERNAMES\$	\$DATES\$	\$TIMES\$
\$FILES\$		

\$USERNAMES	\$DATES	\$TIMES
\$FILES		

\$USERNAMES	\$DATES	\$TIMES
\$FILES		

\$USERNAMES	\$DATES	\$TIMES
\$FILES		

\$USERNAMES	\$DATES	\$TIMES
\$FILES		

\$USERNAMES	\$DATES	\$TIMES
\$FILES		

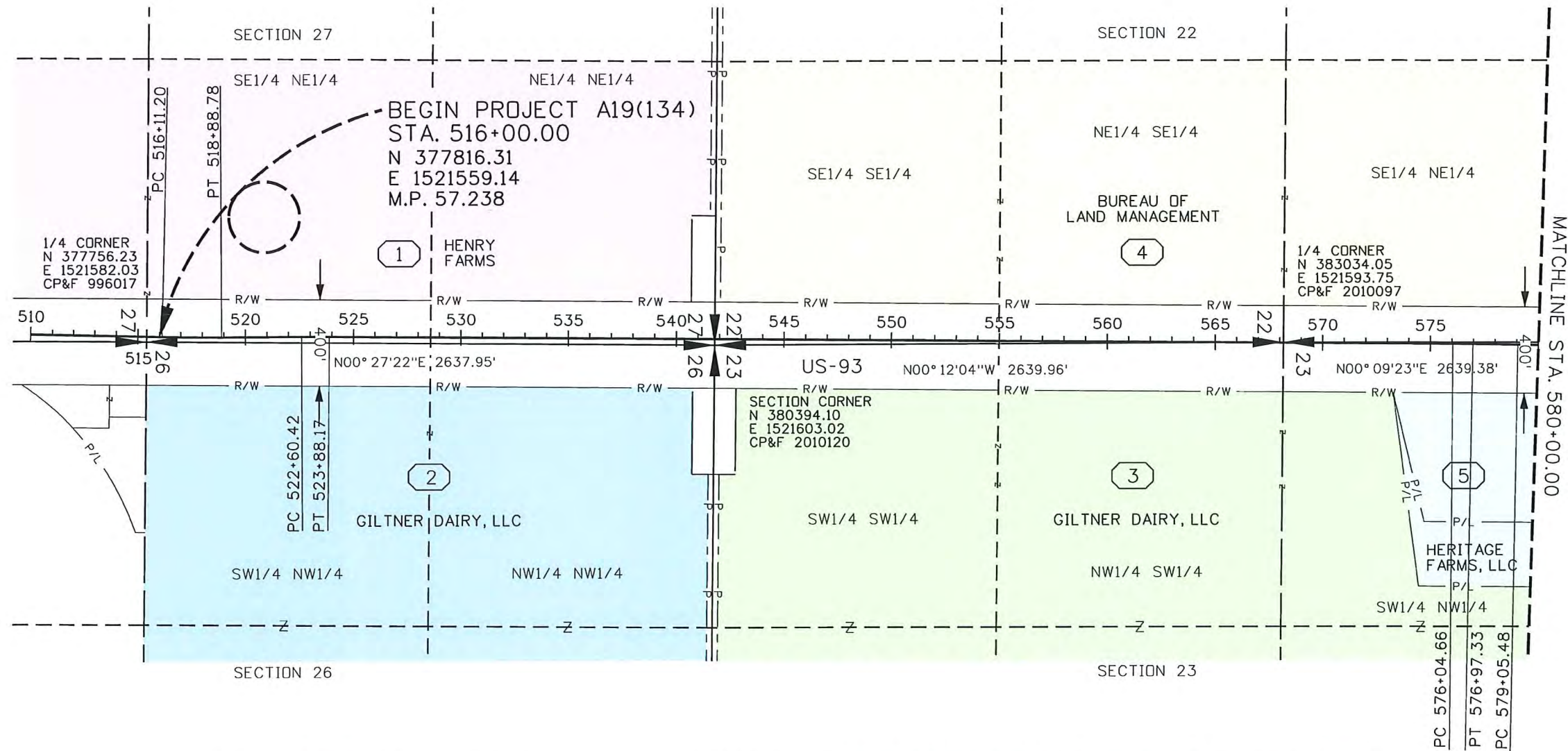
\$USERNAMES\$	\$DATES\$	\$TIMES\$
\$FILES\$		

\$USERNAMES\$	\$DATES\$	\$TIMES\$
\$FILES\$		

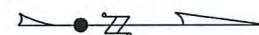
\$USERNAMES\$	\$DATES\$	\$TIMES\$
\$FILES\$		

\$USERNAMES\$	\$DATES\$	\$TIMES\$
\$FILES\$		

T.8 S., R.17 E., B.M.



Parcel No.	Parcel I.D. No.	Record Owner	Total Ownership Assessed Ac.	Right of Way		Remainder		Easement	
				Req'd. Ac.	Exist. Ac.	Left Ac.	Right Ac.	Perm. Ac.	Temp. Ac.
1	19134L01	HENRY FARMS	152.72 Ac.	1.01 Ac.	0.0 Ac.	151.71 Ac.	0.0 Ac.	0.41 Ac.	0.0 Ac.
2	19134L02	GILTNER DAIRY, LLC	187.09 Ac.	1.01 Ac.	0.0 Ac.	0.0 Ac.	186.08 Ac.	1.16 Ac.	0.0 Ac.
3	19134L03	GILTNER DAIRY, LLC	254.24 Ac.	0.92 Ac.	0.0 Ac.	0.0 Ac.	252.40 Ac.	1.16 Ac.	0.0 Ac.
4	INFO ONLY	BUREAU OF LAND MANAGEMENT	102.98 Ac.	0.0 Ac.	0.0 Ac.	0.0 Ac.	0.0 Ac.	0.64 Ac.	0.0 Ac.
5	INFO ONLY	HERITAGE FARMS, LLC	10.00 Ac.	0.0 Ac.	0.0 Ac.	0.0 Ac.	0.0 Ac.	0.0 Ac.	0.0 Ac.



SCALE IN FEET



BASIS OF SURVEY
THE HORIZONTAL DATUM FOR THIS PROJECT IS BASED ON THE IDAHO STATE PLANE COORDINATE SYSTEM, CENTRAL ZONE, NORTH AMERICAN DATUM 1983 (NAD83), 1992 ADJUSTMENT, PROJECTED TO GROUND VALUES BY SCALING FROM THE COORDINATE ORIGIN OF 0,0, UTILIZING A COMBINED SCALE FACTOR OF 1.0002135506 PROVIDED BY THE IDAHO TRANSPORTATION DEPARTMENT. THE POSITION AND ELEVATION FROM WHICH THIS COMBINED FACTOR WAS DERIVED IS UNKNOWN TO J-U-B ENGINEERS, INC. THE CONVERGENCE ANGLE FOR THIS PROJECT IS -0°18'02" COMPUTED AT THE CORNER OF SECTION'S 2, 3, 10 & 11, TOWNSHIP 9 SOUTH, RANGE 17 EAST, BOISE MERIDIAN. ALL BEARINGS SHOWN REPRESENT GRID BEARINGS. ALL DISTANCES SHOWN REPRESENT GROUND DISTANCES. PROJECT COORDINATES WERE ESTABLISHED WITH GPS STATIC METHODS AND PROVIDED BY THE IDAHO TRANSPORTATION DEPARTMENT.

ORIGINAL STORED
AT: ITD, District 4
216 Date Street,
Shoshone, ID

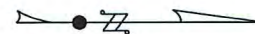
REVISIONS				DESIGNED	DESIGN CHECKED	SCALES SHOWN ARE FOR 11" X 17" PRINTS ONLY	CADD FILE NAME 19134_omop_001.sht	DRAWING DATE: AUGUST, 2016	J-U-B ENGINEERS, Inc.	PROJECT NO. A19(134)	TOTAL OWNERSHIP MAP US-93 100 SOUTH STA. 510+00 TO STA. 580+00 JEROME COUNTY	English COUNTY JEROME KEY NUMBER 19134 SHEET 2 OF 18
NO.	DATE	BY	DESCRIPTION									

NOT
APPROVED
PRELIMINARY
FOR
CONSTRUCTION

-END PROJECT A19(134)
STA. 634+70.00
N 389565.33
E 1522674.15
M.P. 59.486

THE HORIZONTAL DATUM FOR THIS PROJECT IS BASED ON THE IDAHO STATE PLANE COORDINATE SYSTEM, CENTRAL ZONE, NORTH AMERICAN DATUM 1983 (NAD83), 1992 ADJUSTMENT, PROJECTED TO GROUND VALUES BY SCALING FROM THE COORDINATE ORIGIN OF 0,0, UTILIZING A COMBINED SCALE FACTOR OF 1.0002135506 PROVIDED BY THE IDAHO TRANSPORTATION DEPARTMENT. THE POSITION AND ELEVATION FROM WHICH THIS COMBINED FACTOR WAS DERIVED IS UNKNOWN TO J-U-B ENGINEERS, INC. THE CONVERGENCE ANGLE FOR THIS PROJECT IS -0°18'02" COMPUTED AT THE CORNER OF SECTION'S 2, 3, 10 & 11, TOWNSHIP 9 SOUTH, RANGE 17 EAST, BOISE MERIDIAN. ALL BEARINGS SHOWN REPRESENT GRID BEARINGS. ALL DISTANCES SHOWN REPRESENT GROUND DISTANCES. PROJECT COORDINATES WERE ESTABLISHED WITH GPS STATIC METHODS AND PROVIDED BY THE IDAHO TRANSPORTATION DEPARTMENT.

Parcel No.	Parcel I.D. No.	Record Owner	Total Ownership Assessed Ac.	Right of Way		Remainder		Easement	
				Req'd. Ac.	Exist. Ac.	Left Ac.	Right Ac.	Perm. Ac.	Temp. Ac.
6	19134L06	C&J FARMS, INC	29.400 Ac.	4.05 Ac.	0.0 Ac.	0.0 Ac.	25.35 Ac.	0.0 Ac.	0.0 Ac.
7	19134L07	THE AMALGAMATED SUGAR COMPANY	32.733 Ac.	1.13 Ac.	0.0 Ac.	31.60 Ac.	0.0 Ac.	0.0 Ac.	0.0 Ac.
8	INFO ONLY	JEROME COUNTY AIRPORT	137.87 Ac.	0.0 Ac.	0.0 Ac.	0.0 Ac.	0.0 Ac.	0.0 Ac.	0.0 Ac.
9	INFO ONLY	A&G RENTALS	2.78 Ac.	0.0 Ac.	0.0 Ac.	0.0 Ac.	0.0 Ac.	0.0 Ac.	0.0 Ac.
10	INFO ONLY	BRUCE BRADLEY	6.56 Ac.	0.0 Ac.	0.0 Ac.	0.0 Ac.	0.0 Ac.	0.0 Ac.	0.0 Ac.
11	INFO ONLY	SNAKE RIVER ENTERPRISES	6.47 Ac.	0.0 Ac.	0.0 Ac.	0.0 Ac.	0.0 Ac.	0.0 Ac.	0.0 Ac.
12	INFO ONLY	HENRY HERRGESELL	1.02 Ac.	0.0 Ac.	0.0 Ac.	0.0 Ac.	0.0 Ac.	0.0 Ac.	0.0 Ac.
13	INFO ONLY	MACK PATTERSON	0.33 Ac.	0.0 Ac.	0.0 Ac.	0.0 Ac.	0.0 Ac.	0.0 Ac.	0.0 Ac.
14	INFO ONLY	ROTH INVESTMENTS, LLC	55.46 Ac.	0.0 Ac.	0.0 Ac.	0.0 Ac.	0.0 Ac.	0.0 Ac.	0.0 Ac.
15	INFO ONLY	JEROME DEVELOPMENT CORPORATION	31.29 Ac.	0.0 Ac.	0.0 Ac.	0.0 Ac.	0.0 Ac.	0.0 Ac.	0.0 Ac.



SCALE IN FEET



REVISIONS				DESIGNED	SCALES SHOWN ARE FOR 11" X 17" PRINTS ONLY	IDAHO TRANSPORTATION DEPARTMENT		PROJECT NO.	TOTAL OWNERSHIP MAP	English COUNTY JEROME KEY NUMBER 19134 SHEET 3 OF 18		
NO.	DATE	BY	DESCRIPTION	DESIGN CHECKED				A19(134)	US-93 100 SOUTH STA. 580+00 TO STA. 635+00 JEROME COUNTY			
				DETAILED VKC							CADD FILE NAME 19134_omop_002.sht	
				DRAWING CHECKED B.M.								DRAWING DATE: AUGUST 2016

APPROVED FOR CONSTRUCTION

PRELIMINARY

ORIGINAL STORED
AT: ITD, District 4
216 Date Street,
Shoshone, ID

English

COUNTY
JEROME

KEY NUMBER
19134

SHEET 3 OF 18

NOT
APPROVED
PRELIMINARY
FOR
CONSTRUCTION



PRELIMINARY PLAN - NOT FOR CONSTRUCTION

JUB J-U-B ENGINEERS, INC.

IDAHO TRANSPORTATION DEPARTMENT

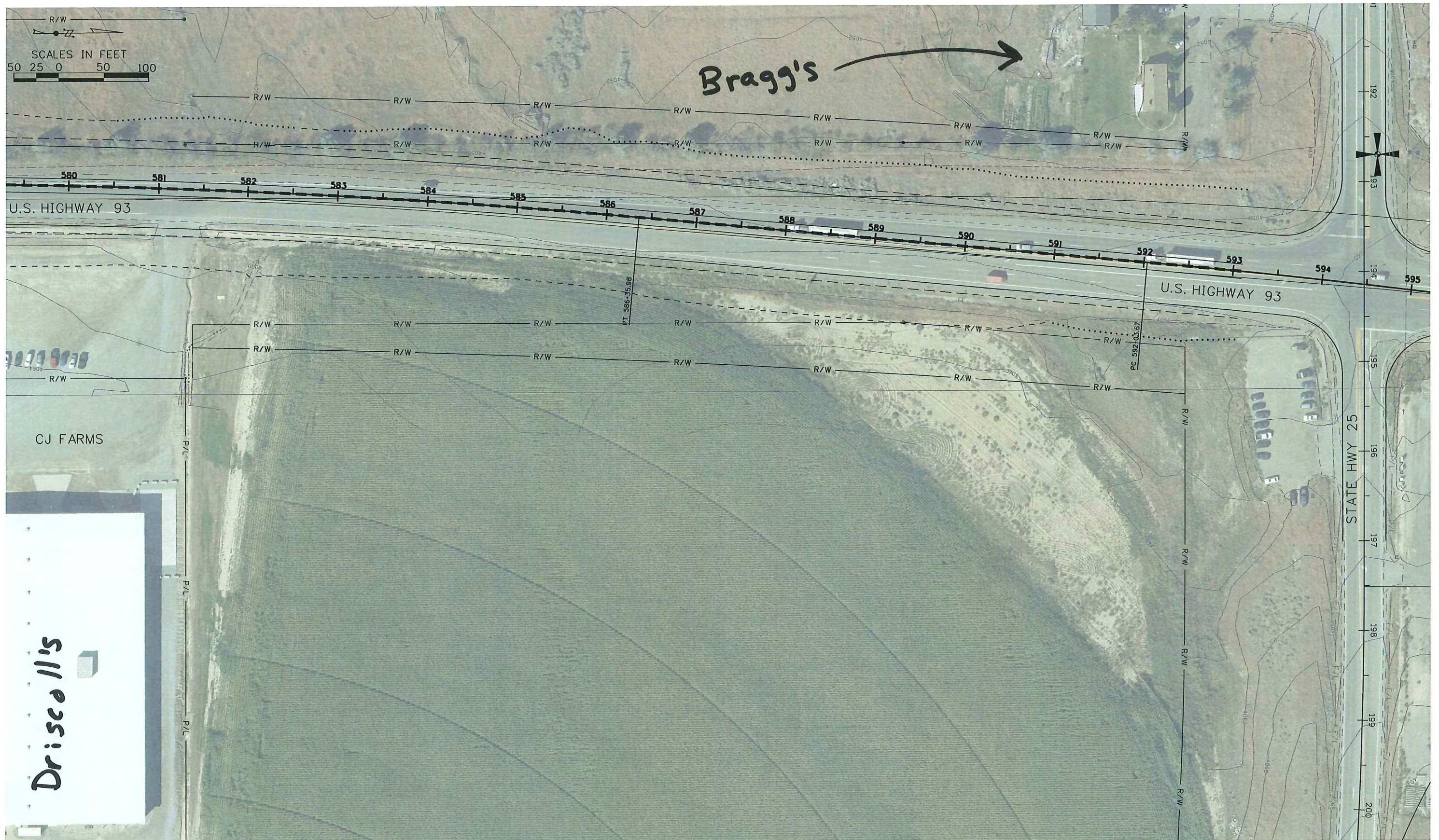


PROJECT NO.
A019(134)

ROADWAY PLAN EXHIBIT
100 SOUTH RD, JEROME CO
CJ FARMS ACCESS

COUNTY	JEROME
KEY NUMBER	19134
SHEET	1 OF 2

m:\p\p\8/9/2016\041:09 AM
JUB\Public Projects\US93\100-South\19134\Project_Development\Plan_Sheets\90-Exhibits\CJ Farms Exhibit (2 of 2).shx



PRELIMINARY PLAN - NOT FOR CONSTRUCTION

JUB J-U-B ENGINEERS, INC.

IDAHO TRANSPORTATION DEPARTMENT



PROJECT NO.
A019(134)

ROADWAY PLAN EXHIBIT
100 SOUTH RD, JEROME CO
CJ FARMS ACCESS

COUNTY JEROME
KEY NUMBER 19134
SHEET 2 OF 2