

Monitoring & Assessment Plan For ITD D2 MS4 Permit



**Your Safety • Your Mobility
Your Economic Opportunity**

*Idaho Transportation Department, District 2
2600 Frontage Rd, Lewiston Idaho*

Contact Information:

*Doral Hoff
208-799-5090*

*Website: [District 2 | Idaho
Transportation Department](#)*

Permittee Permit Number: IDS028258

CONTENTS

CONTENTS	2
1. PROJECT SCOPE AND OBJECTIVES.....	3
1.1 Plan Intent.....	3
2. PROJECT OVERVIEW.....	3
2.1 Introduction	3
2.2 Site Location.....	3
3. Monitoring & Assessment Activities	3
3.1 Illicit Discharge Detection and Elimination	3
3.2 Illicit Discharge Training.....	4
3.3 Dry Weather Outfall Screening.....	4
3.4 Wet Weather Outfall Screening.....	4
3.5 Inspection of Existing Facilities	4
3.6 Monitoring and Assessment Quality Control.....	5

1. PROJECT SCOPE AND OBJECTIVES

1.1 Plan Intent

The intent of this document is to provide a plan that will meet the Idaho Department of Environmental Quality's (DEQ) requirements for the existing MS4 stormwater permit in ITD District 2.

2. PROJECT OVERVIEW

2.1 Introduction

ITD D2 was tasked with developing a Monitoring & Assessment plan in compliance with their SWMP and MS4 Permit with the goal of quantifying the pollutant loadings from the MS4 into the Clearwater and Snake Rivers for sedimentation/siltation.

2.2 Site Location

The general location of the site in reference to the MS4 permit is shown in Figure 1. ITD currently has 15 outfalls which ultimately discharge into the Clearwater River (circled in figure).

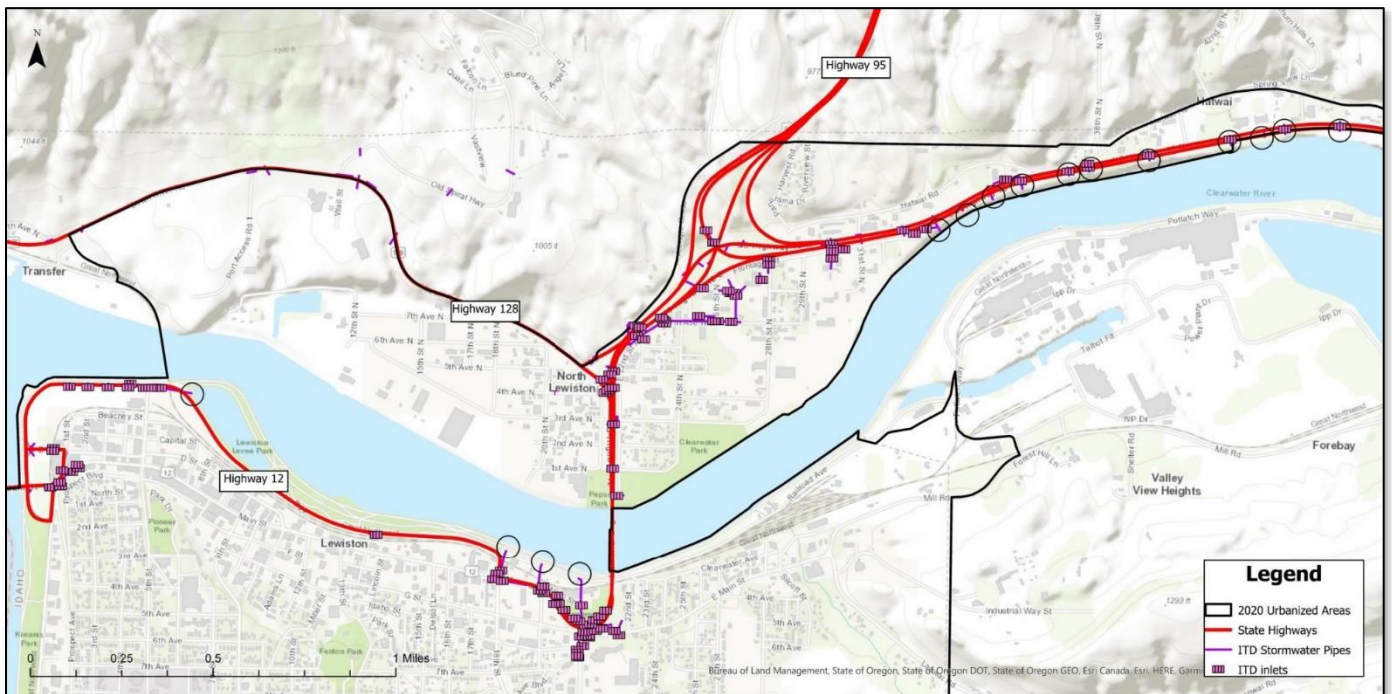


Figure 1 - Vicinity Map

3. Monitoring & Assessment Activities

This section will define proposed measures that ITD will follow for monitoring and assessing the existing stormwater outfalls within the urbanized area included as part of the MS4 permit.

3.1 Illicit Discharge Detection and Elimination

ITD is working towards updating the program to detect and eliminate illicit discharges into the MS4. As part of this program, non-stormwater discharges will be prohibited through an ordinance, which will follow the requirements set forth in the MS4 permit. Additionally, a dedicated line of communication (phone, email, or other accessible method) will be established for the public to report any illicit discharges. Complaints will be responded to by trained staff in a timely

manner. Complaints and responses will be logged and recorded. All illicit discharges whether they be a recurring spill or a new spill will be investigated within 48-hours of its detection.

To identify and record any areas of illicit discharges, ITD has put together an MS4 Map and outfall inventory.

3.2 Illicit Discharge Training

Training will be provided to any new staff working on illicit discharge detection and elimination issues within the MS4 area within 6 months of employment. Construction inspectors, maintenance field staff, and code compliance officers will be sufficiently trained to conduct screening activities and respond to illicit discharges and spills.

3.3 Dry Weather Outfall Screening

ITD will complete a dry weather screening of the outfalls within the MS4 permit area at least two times annually. The purpose of this screening will be to identify any outfalls that are still discharging in dry weather and investigate the source of the flow if present. Focus will be placed upon identifying any outfalls with illicit discharges or illegal connections.

If discovered, dry weather discharges will be sampled and tested to determine: pH, total chlorine, detergents, total phenols, E. coli, total phosphorus, turbidity, temperature, and total suspended solids. Results will be compared to established thresholds and existing water quality standards to determine follow-up actions.

ITD will complete the inspection visually and take pictures to document physical conditions of the outfall. Information will be logged for each outfall, including:

- Date, time, and inspector
- Time since last rain event
- Estimated quantity of last rain event
- Site description
- Visual observations
- Results of sampling/testing

3.4 Wet Weather Outfall Screening

ITD will complete a wet weather screening of the outfalls within the MS4 permit area at least two times annually (during the rainy season). The purpose of this screening will be to monitor the outfalls that are discharging and visually inspect the flow conditions. Focus will be placed upon identifying any outfalls with a high concentration of contaminants discharging to the MS4.

Wet weather discharges will be sampled and tested to determine: pH, total chlorine, detergents, total phenols, E. coli, total phosphorus, turbidity, temperature, and total suspended solids. Results will be compared to established thresholds and existing water quality standards to determine follow-up actions.

ITD will complete the inspection visually and take pictures to document physical conditions of the outfall. Information will be logged for each outfall, including:

- Date, time, and inspector
- Current weather conditions
- Site description
- Visual observations
- Results of sampling/testing

3.5 Inspection of Existing Facilities

During each of the outfall screenings, any associated structures (catch basins, manholes, etc.) will also be inspected. Physical damage, debris, clogs, or other issues will be noted and logged to be responded to. ITD currently performs normal cleaning of catch basins, roadway sweeping, and other maintenance throughout the year.

3.6 Monitoring and Assessment Quality Control

During the Monitoring and Assessment activities, ITD may be required to procure the services of a Testing Lab to provide any testing as required. All reports and results of the sampling and materials testing shall be recorded and provided to DEQ in a timely manner to provide adequate oversight of the project. DEQ will review the testing reports and results and distribute as required. ITD will provide oversight to tests or materials to ensure that any recommended improvements are completed in a timely manner.