

# FY19 Report on the 2015 Transportation Revenue Increase

December 2019

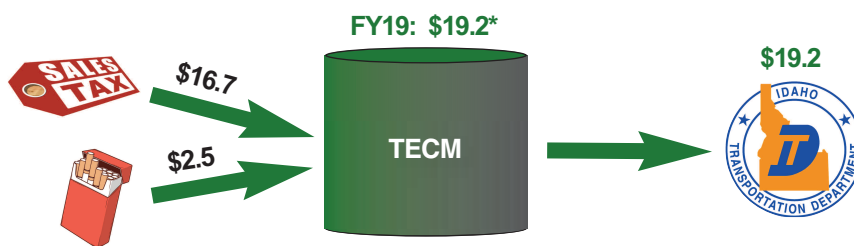
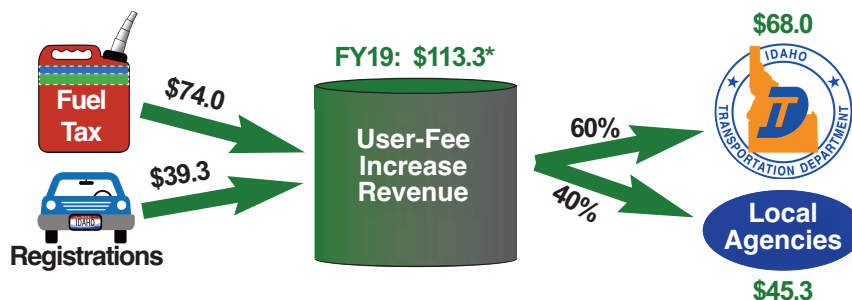
## Executive Summary

### INVESTING THE 2015 AND 2017 REVENUE INCREASES

The 2015 Idaho Legislature provided additional ongoing funding for transportation by increasing state fuel taxes and increasing vehicle registration fees. The legislature also temporarily provided 50 percent of the General Fund Surplus to the Strategic Initiatives Program Fund (SIPF). This temporary funding source expired at the end of FY18.

In 2017 the Idaho Legislature created the Transportation Expansion and Congestion Mitigation Fund (TECM) that receives revenue from sales tax, cigarette tax, and other miscellaneous sources.

See funding diagrams for Fiscal Year 2019 below (*dollars in millions and rounded*):



*\*Excludes interest earnings*

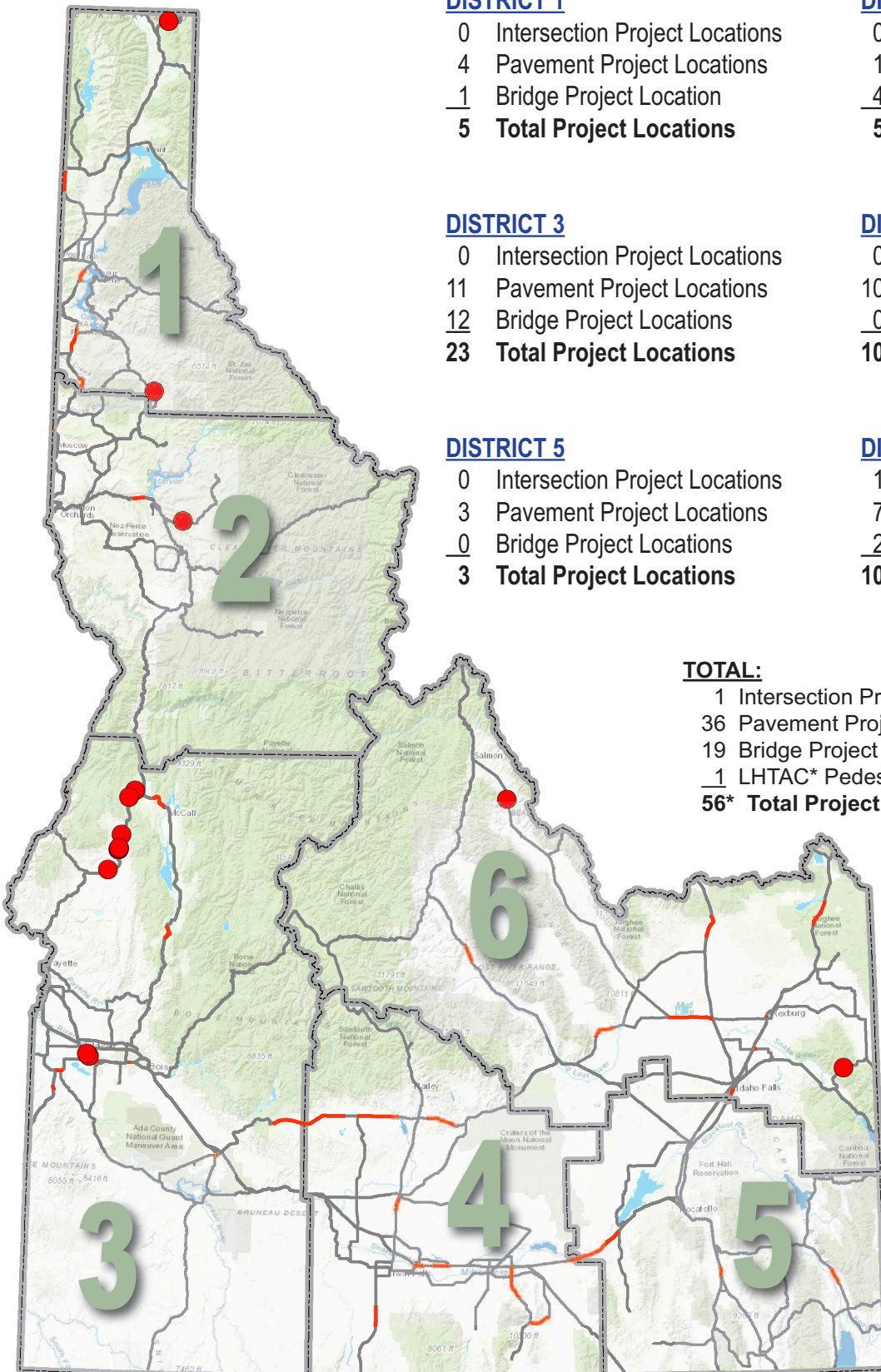
## Projects Funded by the New Revenue Sources

ITD used its share of increased user fee, General Fund Surplus, and TECM revenue to fund 56 road and bridge projects across the state in FY19 (see map on reverse side).



**Your Safety. Your Mobility. Your Economic Opportunity.**

# FY19 Projects Funded by New User-Fee, SIP, and TECM Revenue



## DISTRICT 1

0 Intersection Project Locations  
4 Pavement Project Locations  
1 Bridge Project Location  
**5 Total Project Locations**

## DISTRICT 2

0 Intersection Project Locations  
1 Pavement Project Locations  
4 Bridge Project Locations  
**5 Total Project Locations**

## DISTRICT 3

0 Intersection Project Locations  
11 Pavement Project Locations  
12 Bridge Project Locations  
**23 Total Project Locations**

## DISTRICT 4

0 Intersection Project Locations  
10 Pavement Project Locations  
0 Bridge Project Locations  
**10 Total Project Locations**

## DISTRICT 5

0 Intersection Project Locations  
3 Pavement Project Locations  
0 Bridge Project Locations  
**3 Total Project Locations**

## DISTRICT 6

1 Intersection Project Locations  
7 Pavement Project Locations  
2 Bridge Project Locations  
**10 Total Project Locations**

## TOTAL:

1 Intersection Project Locations  
36 Pavement Project Locations  
19 Bridge Project Locations  
1 LHTAC\* Pedestrian-Safety Project  
**56\* Total Project Locations**

\*Local Highway Technical Assistance Council

## **NOTE:**

Not all locations are visible.  
Some markers may overlay others.

See more information on projects at:  
<http://itd.idaho.gov/new-revenue>