

# FY20 Report on the 2015 Transportation Revenue Increase



October 2020

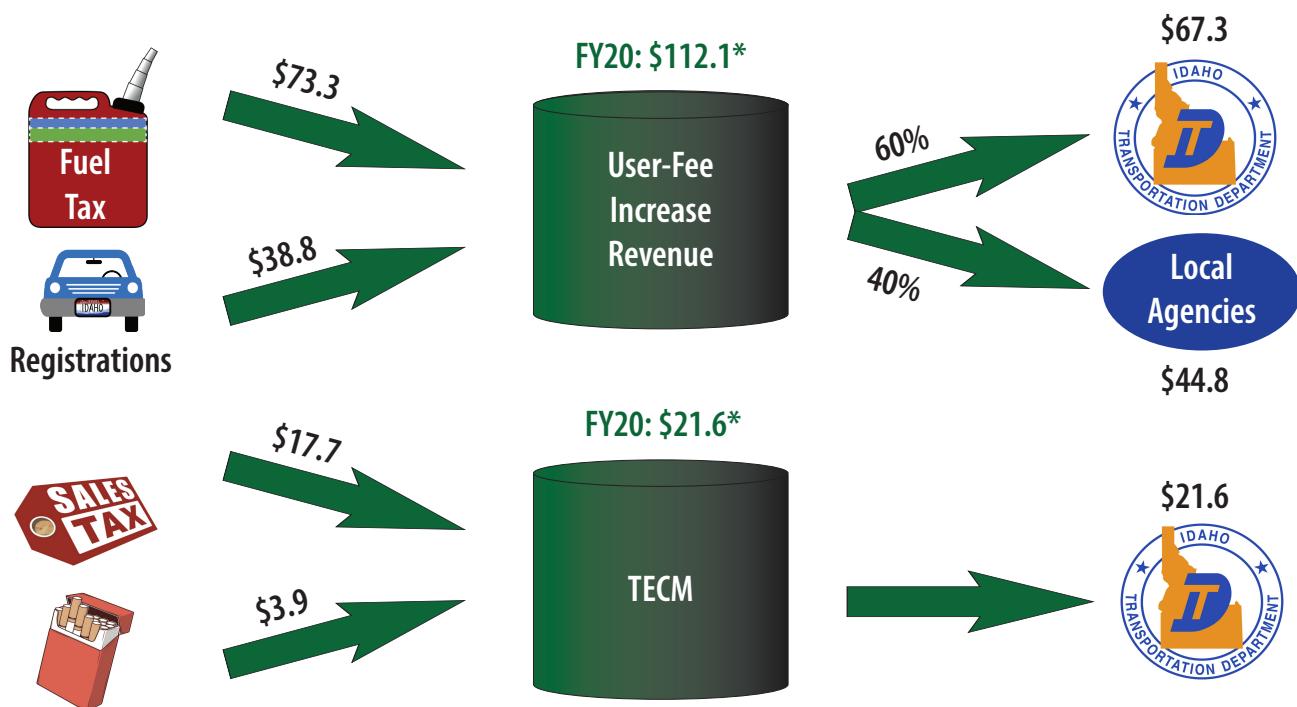
## Executive Summary

### INVESTING THE 2015 AND 2017 REVENUE INCREASES

The 2015 Idaho Legislature provided additional ongoing funding for transportation by increasing state fuel taxes and increasing vehicle registration fees.

In 2017 the Idaho Legislature created the Transportation Expansion and Congestion Mitigation Fund (TECM) that receives revenue from sales tax, cigarette tax, and other miscellaneous sources.

See funding diagrams for Fiscal Year 2020 below (dollars in millions and rounded):



\*Excludes interest earnings

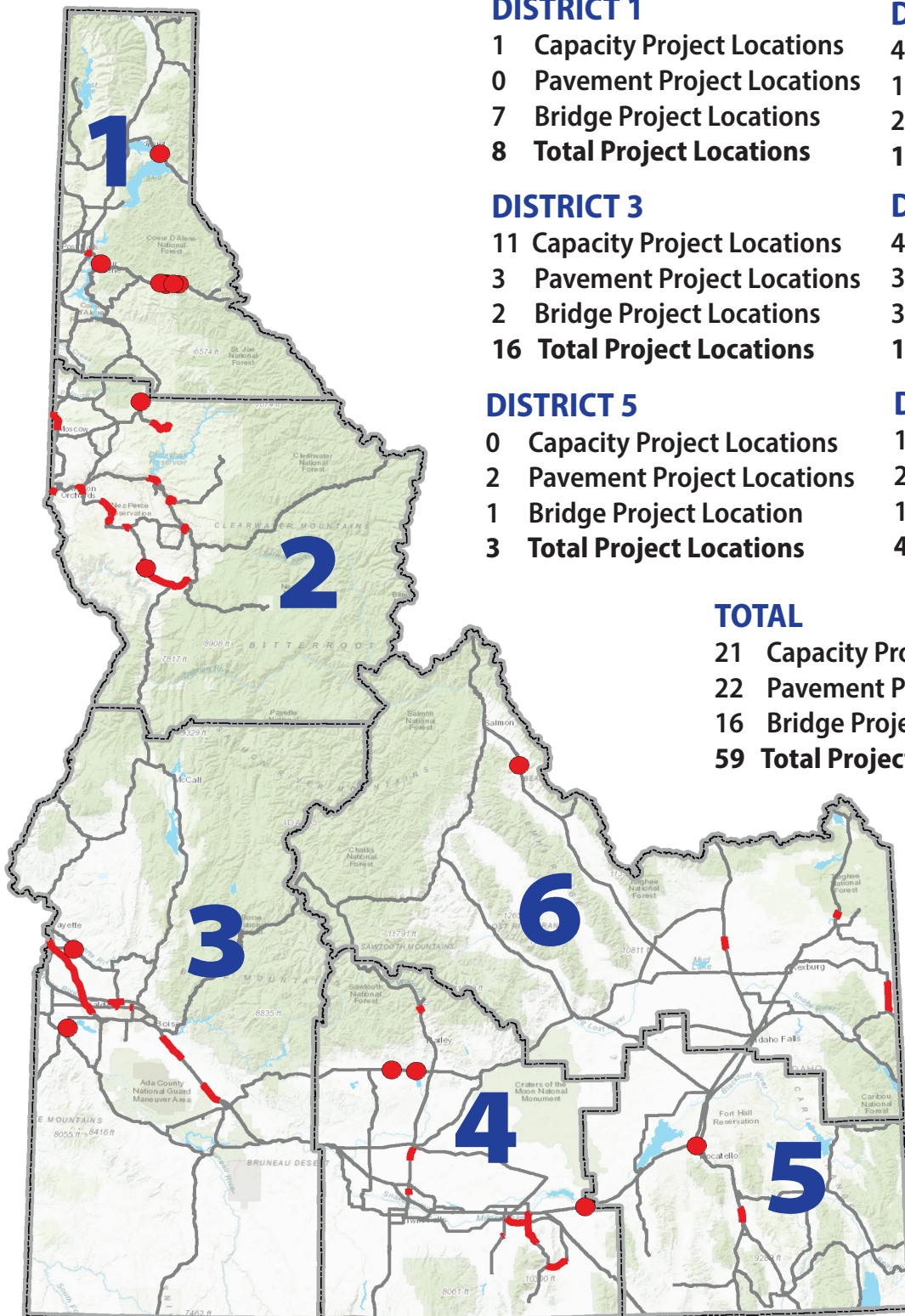
## Projects Funded by the New Revenue Sources

ITD used its share of increased user fee and TECM revenue to fund 59 road and bridge projects across the state in FY20 (see map on reverse side).



Your Safety. Your Mobility. Your Economic Opportunity.

# FY20 Projects Funded by New User-Fee, SIP, and TECM Revenue



## DISTRICT 1

- 1 Capacity Project Locations
- 0 Pavement Project Locations
- 7 Bridge Project Locations
- 8 Total Project Locations

## DISTRICT 3

- 11 Capacity Project Locations
- 3 Pavement Project Locations
- 2 Bridge Project Locations
- 16 Total Project Locations

## DISTRICT 5

- 0 Capacity Project Locations
- 2 Pavement Project Locations
- 1 Bridge Project Location
- 3 Total Project Locations

## DISTRICT 2

- 4 Capacity Project Locations
- 12 Pavement Project Locations
- 2 Bridge Project Locations
- 18 Total Project Locations

## DISTRICT 4

- 4 Capacity Project Locations
- 3 Pavement Project Locations
- 3 Bridge Project Locations
- 10 Total Project Locations

## DISTRICT 6

- 1 Capacity Project Locations
- 2 Pavement Project Locations
- 1 Bridge Project Location
- 4 Total Project Locations

## TOTAL

- 21 Capacity Project Locations
- 22 Pavement Project Locations
- 16 Bridge Project Locations
- 59 Total Project Locations

**Note:** Not all locations are visible.  
Some markers may overlay others.

For more information on projects:  
<http://itd.idaho.gov/new-revenue>