

SERVICE CABINET SCHEDULE

ITEM	CLASS "B"
① MAIN BREAKER	(SEE SCHEDULE)
② CONTROL BREAKER	1P-15A 120/240 VOLT
③ TEST SWITCH	SPST-15A 120/240 VOLT
④ LIGHTING BRANCH BREAKER	2P-120/240 VOLT (SEE SCHEDULE)
⑤ SIGNAL CONTROL BREAKER	
⑥ DRY TRANSFORMER	NONE
⑦ LIGHTING CONTACTOR	8P (ANY COMBINATION)
⑧ FLASHER CONTROL BREAKER	

BREAKER RATING SCHEDULE

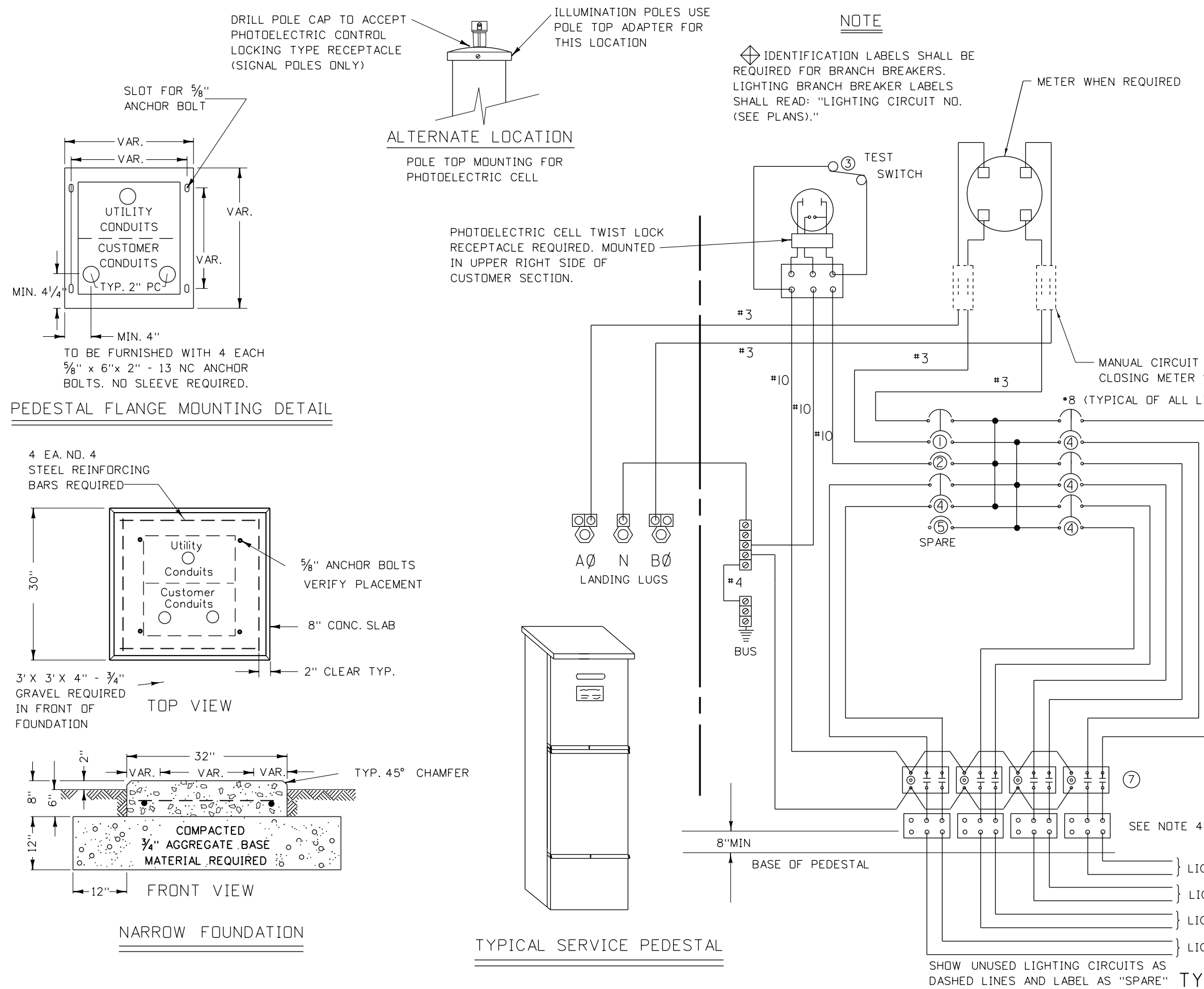
CLASS "B"	
ITEM	NO. OF LIGHTING CIRCUITS
MAIN BREAKER	100 AMP 2P
LIGHTING BRANCH BREAKER	30 AMP 2P
SIGNAL CONTROL BREAKER	
LIGHTING CONTACTOR	30 AMP 8P
SERVICE WIRE	NO. 3 THWN

NOTES:

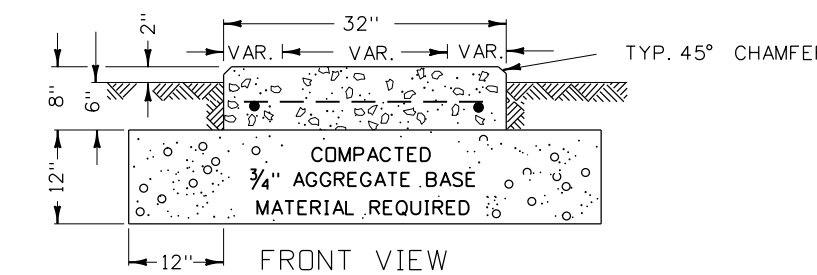
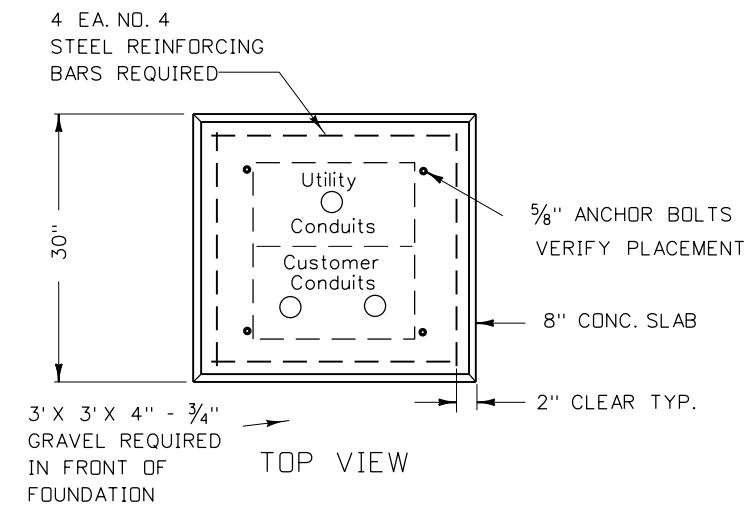
- SERVICE CABINETS SHALL BE NEMA TYPE 3R. TO BE FURNISHED WITH A PADLOCK HASP.
- DEAD FRONT CONSTRUCTION IS REQUIRED ON ALL CABINETS.
- PLUG-IN TYPE BREAKERS SHALL BE USED ON "B" SERVICES. MAIN BREAKERS SHALL BE BOLT RETAINED.
- PRESSURE TYPE TERMINALS SHALL BE REQUIRED FOR #8 THROUGH #2 AWG. WIRE.
- ALL SERVICES SHALL BE U.L. LABELED FOR MAXIMUM 100 AMP BUS RATING, AND "APPROVED FOR SERVICE ENTRANCE EQUIPMENT."
- THE MAIN BREAKER LABEL SHALL BE MADE OF RED ON WHITE PLASTIC LAMINATE. THE BRANCH BREAKER LABELS SHALL BE MADE OF BLACK ON WHITE PLASTIC LAMINATE. THE LEGENDS SHALL BE ENGRAVED INTO THE STRIP SO AS TO PROVIDE RED OR BLACK LEGEND ON THE REQUIRED BACKGROUND. THE LABELS SHALL BE PERMANENTLY ATTACHED TO THE DEAD FRONT, NEXT TO THE CORRESPONDING BREAKERS.
- LIGHTING CONTACTORS, LIGHTING & SIGNAL BRANCH CIRCUIT BREAKERS TO BE FACTORY INSTALLED.
- BRANCH CIRCUIT WIRE, AND PHOTOELECTRIC CONTROL TO BE SUPPLIED BY THE CONTRACTOR.
- ALL BUSSING TO BE 100 AMP RATED.
- WIRING SHALL BE THWN/MTW 600V 90° C RATED.

NOTE

IDENTIFICATION LABELS SHALL BE REQUIRED FOR BRANCH BREAKERS. LIGHTING BRANCH BREAKER LABELS SHALL READ: "LIGHTING CIRCUIT NO. (SEE PLANS)."



PEDESTAL FLANGE MOUNTING DETAIL



NARROW FOUNDATION

TYPICAL SERVICE PEDESTAL

TYPE I SERVICE

REVISIONS				DESIGNED	SCALES SHOWN	PROJECT NO.	td-03	English	
NO.	DATE	BY	DESCRIPTION	DESIGN CHECKED	ARE FOR 11" X 17" PRINTS ONLY	120/240 ILLUMINATION ELECTRICAL SERVICE PEDESTAL PAD MOUNTED	COUNTY		
1	11-06	HEB	ADDED FEMALE ANCHORS AND DELETED ANCHOR BOLTS FOR STEEL COUPLERS	DETAILED	CADD FILE NAME td03_0109.dgn				SHEET OF
2	01-09	NQB	ADD VAR. TO FLANGE & FOUNDATION DETAIL	DRAWING CHECKED	DRAWING DATE: FEBRUARY, 2000				
				<p>IDAHO TRANSPORTATION DEPARTMENT</p>				<p>NOT APPROVED PRELIMINARY FOR CONSTRUCTION</p>	