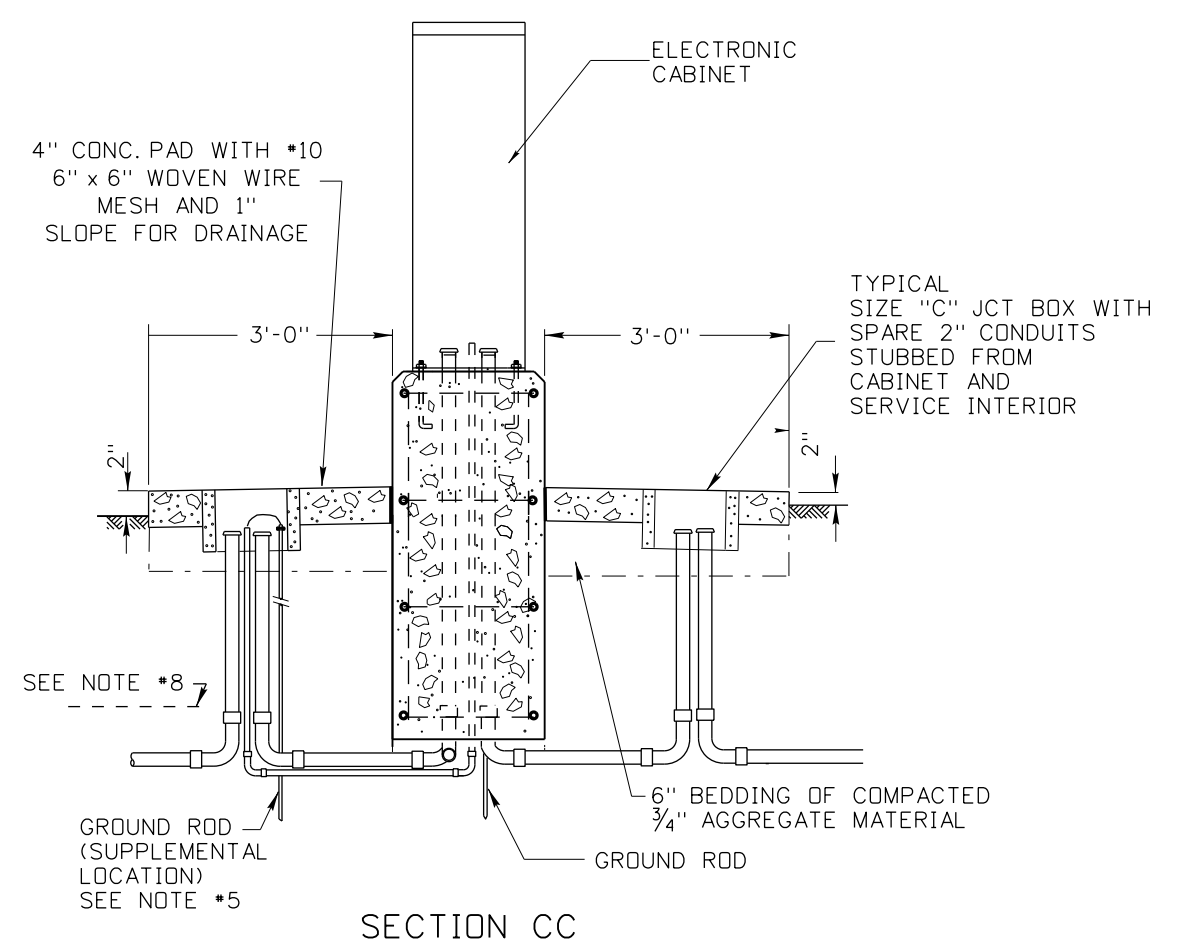
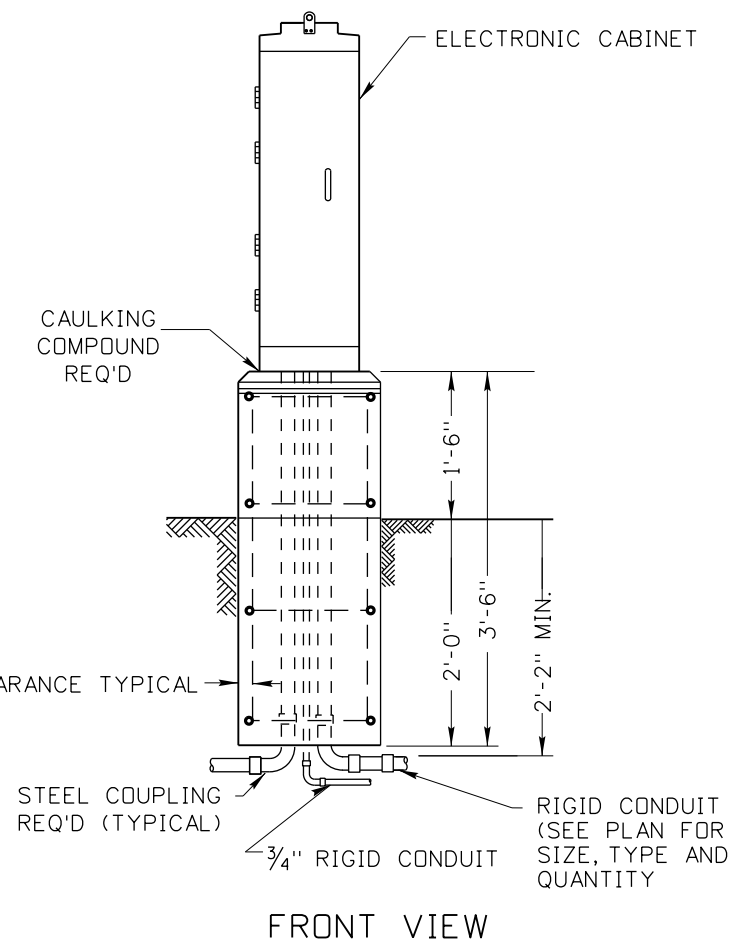


SEE FOUNDATION SCHEDULE FOR HOOPS AND VERTICAL REBAR

SEE FOUNDATION SCHEDULE FOR HOOPS AND VERTICAL REBAR



- NOTES:
1. THE FOUNDATION SHALL BE LOCATED AS INDICATED ON THE PLAN SHEETS.
 2. ALL CONDUITS, ELBOWS AND COUPLINGS WITHIN AND PROTRUDING FROM THE FOUNDATION SHALL BE RIGID STEEL. THE REMAINING CONDUITS SHALL BE AS SHOWN ON THE PLANS.
 3. STUBOUTS SHALL BE TERMINATED WITH A STEEL BONDING BUSHING.
 4. PLASTIC PUSH PLUG REQUIRED AT BOTH ENDS OF SPARE CONDUITS.
 5. GROUND IN ACCORDANCE WITH THE N.E.C.
 6. CONDUIT SHALL BE INSTALLED IN SUCH A MANNER AS TO NOT CAUSE MODIFICATION OF THE CABINET.
 7. GRADE TO PROVIDE DRAINAGE AWAY FROM THE CABINET FOUNDATION.
 8. 6" WIDE ELECTRICAL HAZARD TAPE SHALL BE INSTALLED 1'-0" ABOVE THE CONDUIT. (TYPICAL OF ALL CONDUIT PLACED IN GROUND).

ELECTRONIC CABINET FOUNDATION SCHEDULE											
CABINET TYPE	FOUNDATION TYPE	HOOPS			VERTICAL REBAR			CU. YDS. CONC.		CABINET ANCHOR BOLT	
		NO.	SIZE	LIN. FT.	NO.	SIZE	LIN. FT.	FOUNDATION	PAD	QNTY.	SIZE
ELECTRONIC	170/334	4	#4	38'-0"	6	#4	19'-0"	.85	.19	4	1/2" X 12" X 3"

REVISIONS			
NO.	DATE	BY	DESCRIPTION

DESIGNED

DESIGN CHECKED

DETAILED

DRAWING CHECKED

SCALES SHOWN ARE FOR 11" X 17" PRINTS ONLY

CADD FILE NAME td07_0214.dgn

DRAWING DATE: FEBRUARY, 2014

IDAHO TRANSPORTATION DEPARTMENT

PROJECT NO. td-07

ELECTRONIC CABINET FOUNDATION DETAIL FOR ITS AND PORTS OF ENTRY

English

COUNTY

KEY NUMBER

SHEET OF

NOT APPROVED
PRELIMINARY
FOR CONSTRUCTION