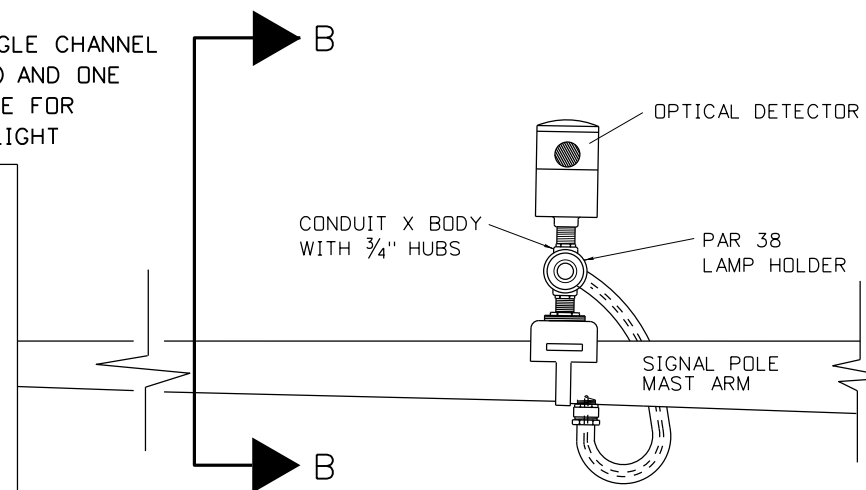
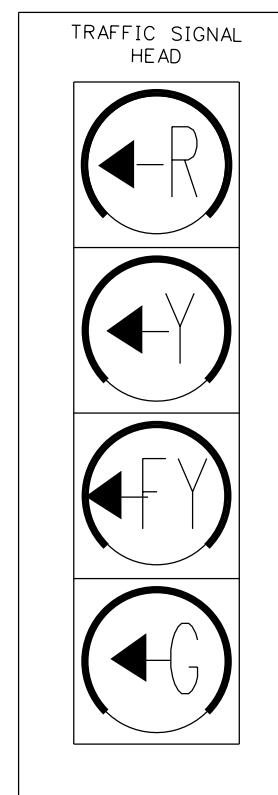


EMERGENCY VEHICLE DETECTOR
AND MOUNTING ASSEMBLY
VIEW B-B

USE ONE M-138 CABLE FOR SINGLE CHANNEL
OPTICAL DETECTOR (GTT 711) AND ONE
IMSA 3 CONDUCTOR CABLE FOR
CALL BACK INDICATOR LIGHT



REVISIONS			
NO.	DATE	BY	DESCRIPTION
1	02-11	HEB	4 SECTION HEAD & CORRECTED LEVELS


DESIGNED
DESIGN CHECKED
DETAILED
DRAWING CHECKED

SCALES SHOWN
ARE FOR 11" X 17"
PRINTS ONLY

CADD FILE NAME
td32b_0912.dgn

DRAWING DATE:

**IDAHO
TRANSPORTATION
DEPARTMENT**



DISTRICT XXXX TRAFFIC

PROJECT NO.

td32b

SINGLE CHANNEL DETECTOR
AND CALL BACK LIGHT

English

COUNTY

KEY NUMBER

SHEET OF

NOT
APPROVED
PRELIMINARY
FOR
CONSTRUCTION