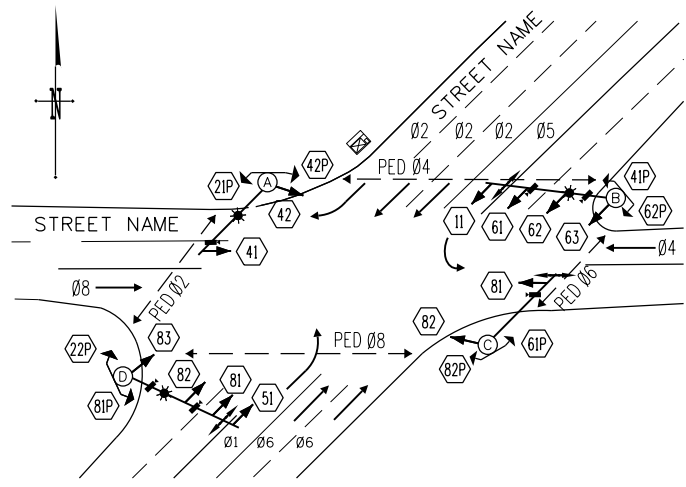
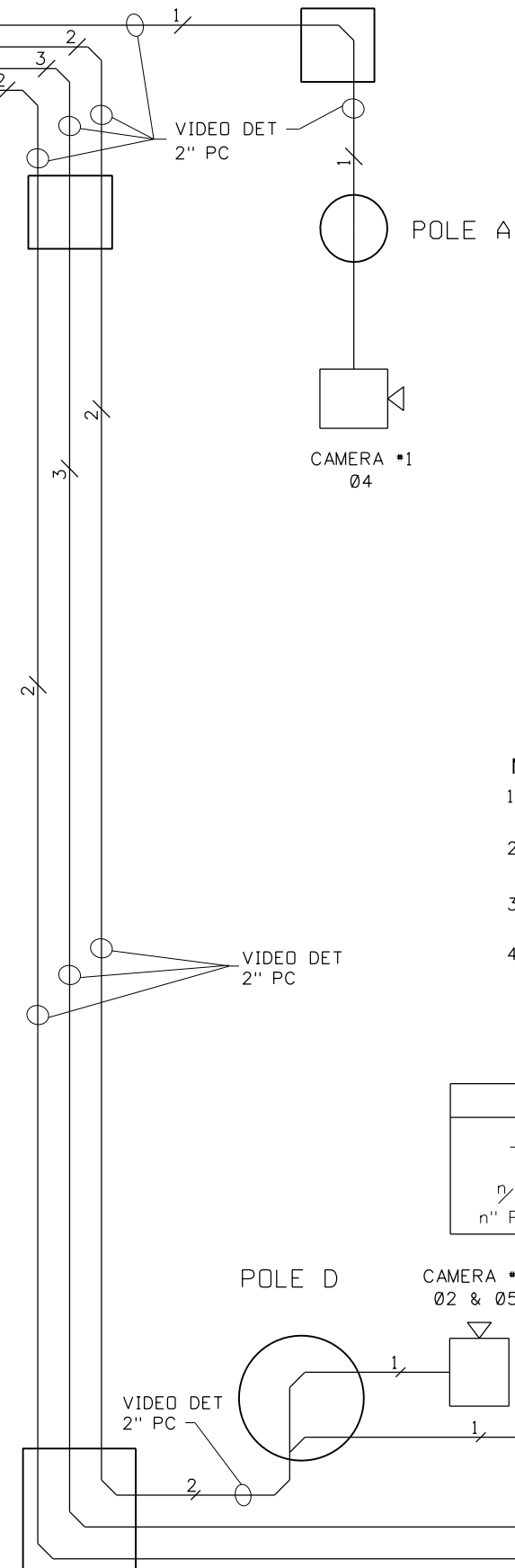


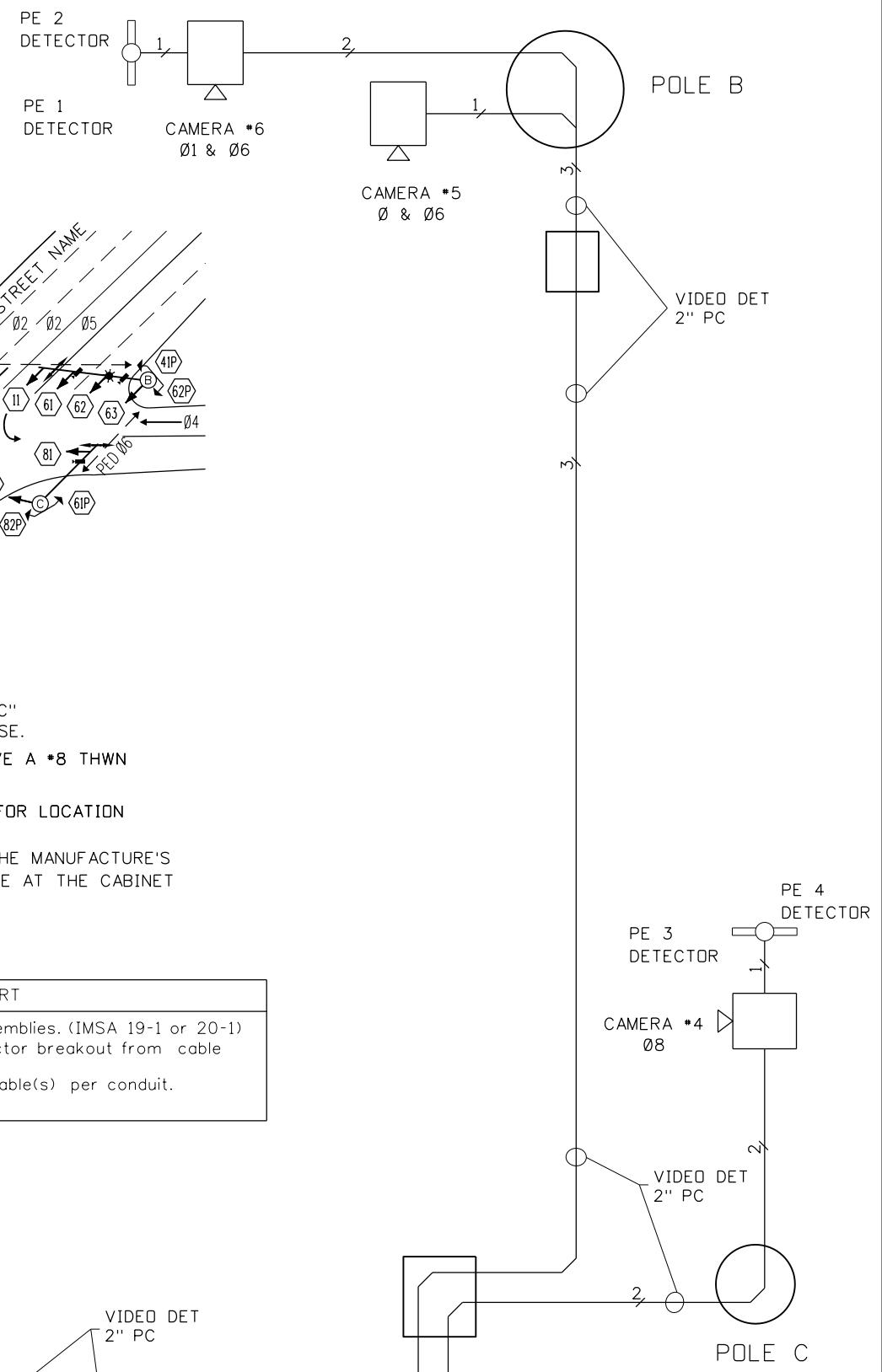
01 & 06	DC GND	X11	BARE
	PE 1	X12	YELLOW
02 & 05	PE 2	X13	BLUE
	26 VDC	X14	ORANGE
03 & 08	DC GND	X17	BARE
	PE 3	X18	YELLOW
04 & 07	PE 4	X119	BLUE
	26 VDC	X20	ORANGE



- NOTES:**
1. USE 2" PC FROM EACH SIGNAL SIZE "PGC" JUNCTION BOX TO EACH SIGNAL POLE BASE.
 2. ALL NON-METALLIC RACEWAYS SHALL HAVE A #8 THWN GROUND CONDUCTOR.
 3. SEE SIGNAL INTERSECTION PLAN SHEET FOR LOCATION OF JUNCTION BOXES.
 4. VIDEO DETECTION CABLE SHALL BE TO THE MANUFACTURE'S SPECIFICATIONS. LEAVE 10' OF SPARE WIRE AT THE CABINET AND AT THE CAMERA LOCATIONS.

SYMBOLLOGY CHART

- ┌──┐ - Indicates multi-conductors or cable assemblies. (IMSA 19-1 or 20-1)
- └──┘ - Indicates individual conductors or conductor breakout from cable or bundle.
- n/ - Denotes number of conductors and/or cable(s) per conduit.
- n" PC - Denotes conduit size and type.



ORIGINAL STORED AT: ITD, Headquarters 3311 West State Boise, Idaho

REVISIONS			
NO.	DATE	BY	DESCRIPTION

DESIGNED	SCALES SHOWN ARE FOR 11" X 17" PRINTS ONLY
DESIGN CHECKED	
DETAILED	CADD FILE NAME td93_1018.dgn
DRAWING CHECKED	DRAWING DATE:

IDAHO TRANSPORTATION DEPARTMENT



PROJECT NO.	VIDEO DET. FIELD WIRING DIAGRAM
	td93
	FIVE OR MORE CAMERAS WITH EMERGENCY VEHICLE PRE-EMPT CONTROLLER CABINET LOCATED IN UPPER LEFT QUADRANT

English
COUNTY
KEY NUMBER
SHEET OF

NOT APPROVED
PRELIMINARY
CONSTRUCTION