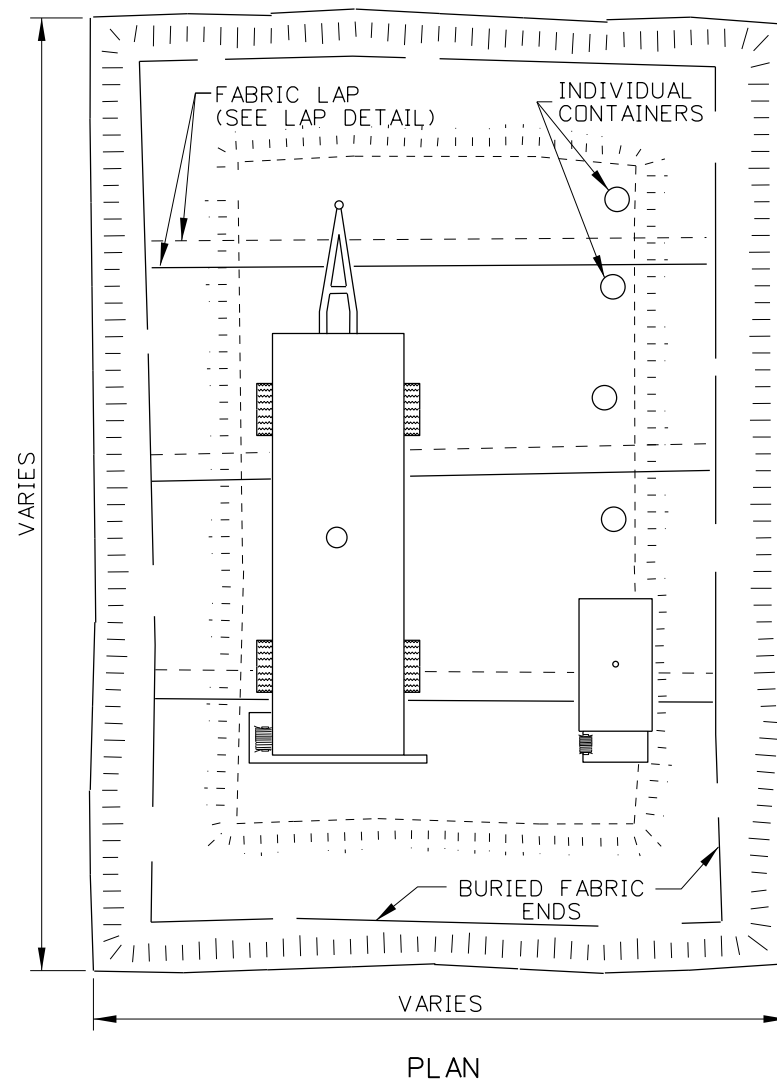
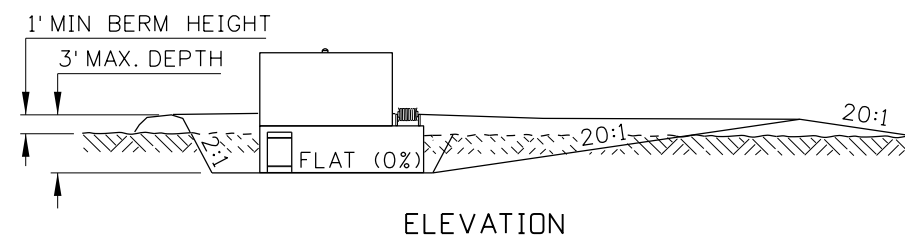


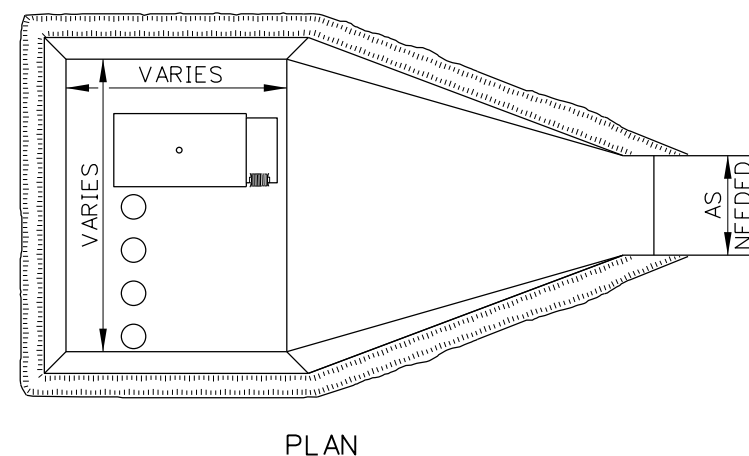
LAP DETAIL



PETROLEUM STORAGE AREA - TYPE 1



ELEVATION



PLAN

PETROLEUM STORAGE AREA - TYPE 2

NOTES

1. USE THIS DRAWING IN CONJUNCTION WITH THE ITD BEST MANAGEMENT PRACTICES (BMP) MANUAL.
2. ENSURE THAT THE PETROLEUM STORAGE AREAS LAST FOR THE DURATION OF THE PROJECT.
3. PROVIDE A TYPE 1 OR TYPE 2 PETROLEUM STORAGE AREA WITH AN IMPERMEABLE PETROLEUM RESISTANT MEMBRANE IF PETROLEUM PRODUCTS ARE STORED ONSITE.
4. ENSURE THAT THE TOTAL VOLUME OF THE BERMED AREA IS 110 PERCENT OF THE TOTAL CAPACITY OF THE STORAGE CONTAINER(S) INSIDE THE BERM.
5. NOTIFY THE ENGINEER AND THE HAZARDOUS MATERIALS COORDINATOR OF SOIL CONTAMINATION RESULTING FROM PETROLEUM SPILLAGE. REMOVAL PROCEDURE REQUIRES ENGINEER AND HAZARDOUS MATERIAL COORDINATOR APPROVAL.
6. ENSURE THAT RUNOFF AT THE EQUIPMENT STAGING AREA ENTRANCE(S) IS RETAINED IN THE STAGING AREA.
7. REMOVE UNCONTAMINATED STORM WATER FROM INSIDE THE STORAGE AREA. TREAT CONTAMINATED STORMWATER AS A HAZARDOUS WASTE AND HAVE IT REMOVED BY A CERTIFIED HAZARDOUS WASTE CONTRACTOR.
8. STORE INCOMPATIBLE MATERIALS IN SEPARATE STORAGE AREAS.
9. STORE MATERIALS IN THEIR ORIGINAL PACKAGING AND ON PALLETS, IF PRACTICAL.
10. NOT TO SCALE.

REVISIONS								
NO.	DATE	BY	NO.	DATE	BY	NO.	DATE	BY
1	09-98	MSM						
2	10-10	KEH						
3	11-13	RDL						

SCALES SHOWN ARE FOR 11" X 17" PRINTS ONLY
 CADD FILE NAME: 212-15_1113.dgn
 DRAWING DATE: DECEMBER, 1995

IDAHO TRANSPORTATION DEPARTMENT



BOISE IDAHO

ORIGINAL SIGNED BY: TOM COLE for HIGHWAYS PROGRAM OVERSIGHT ENGINEER
 ORIGINAL SIGNED BY: TOM COLE CHIEF ENGINEER

STANDARD DRAWING
PETROLEUM STORAGE AREA
 REFER TO STD. DWG. 212-5

ORIGINAL STORED AT: ITD, Headquarters 3311 West State Boise, Idaho

English
 STANDARD DRAWING NO. 212-15
 SHEET 1 OF 1

ORIGINAL SIGNED BY: J. CALEB LAKEY
 DATE ORIGINAL SIGNED: NOVEMBER 20, 2013