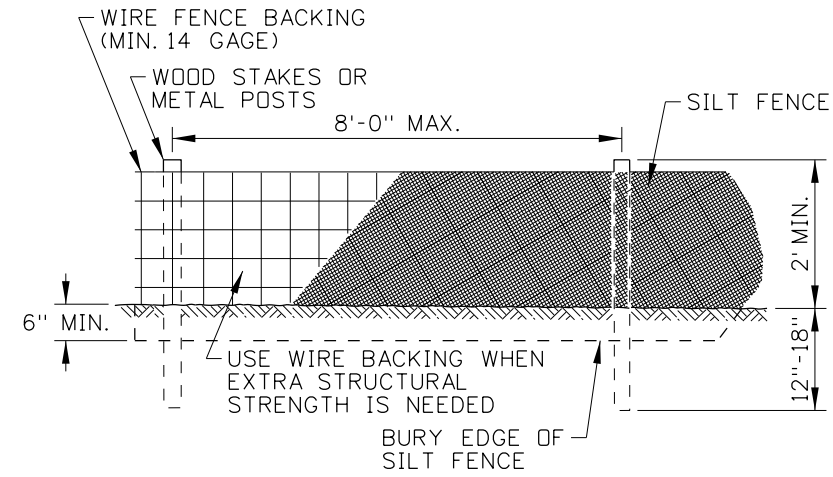
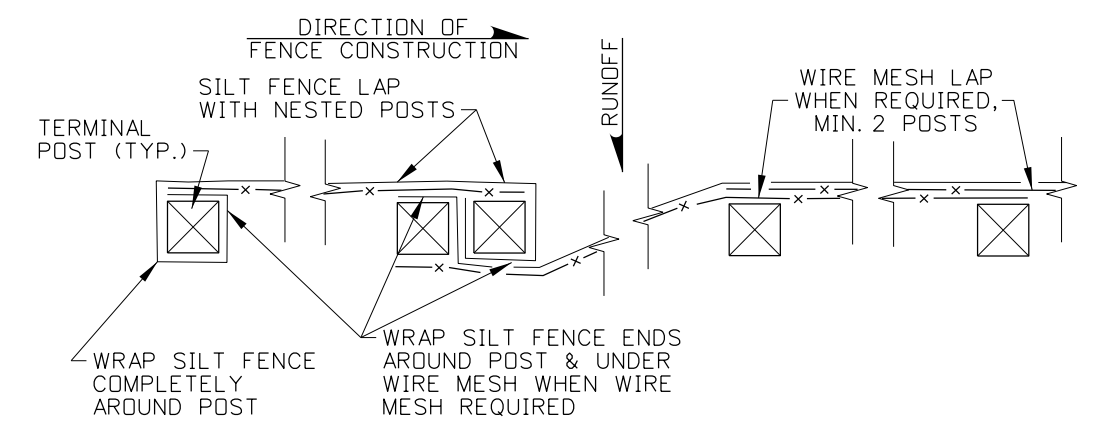


**SILT FENCE (NO WIRE BACKING)**



**SILT FENCE (WIRE BACKING)**



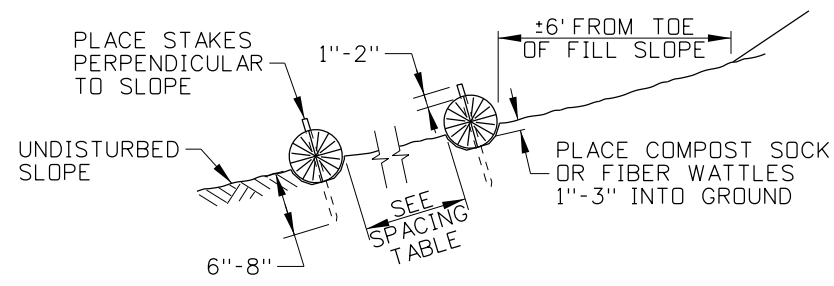
**SILT FENCE LAP DETAIL**

SLOPE	WATTLE SIZE			
	6"	9"	12"	20"
1:1	5 FT	10 FT	15 FT	20 FT
2:1	10 FT	20 FT	30 FT	40 FT
3:1	15 FT	30 FT	45 FT	60 FT
4:1 OR FLATTER	20 FT	40 FT	60 FT	80 FT

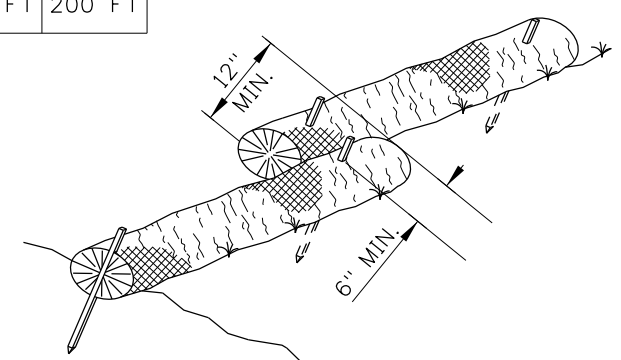
SLOPE	SOIL TYPE		
	SILTY	CLAYS	SANDY
1:1	50 FT	75 FT	100 FT
2:1	75 FT	100 FT	125 FT
4:1	100 FT	125 FT	150 FT
10:1 OR FLATTER	125 FT	150 FT	200 FT

**NOTES**

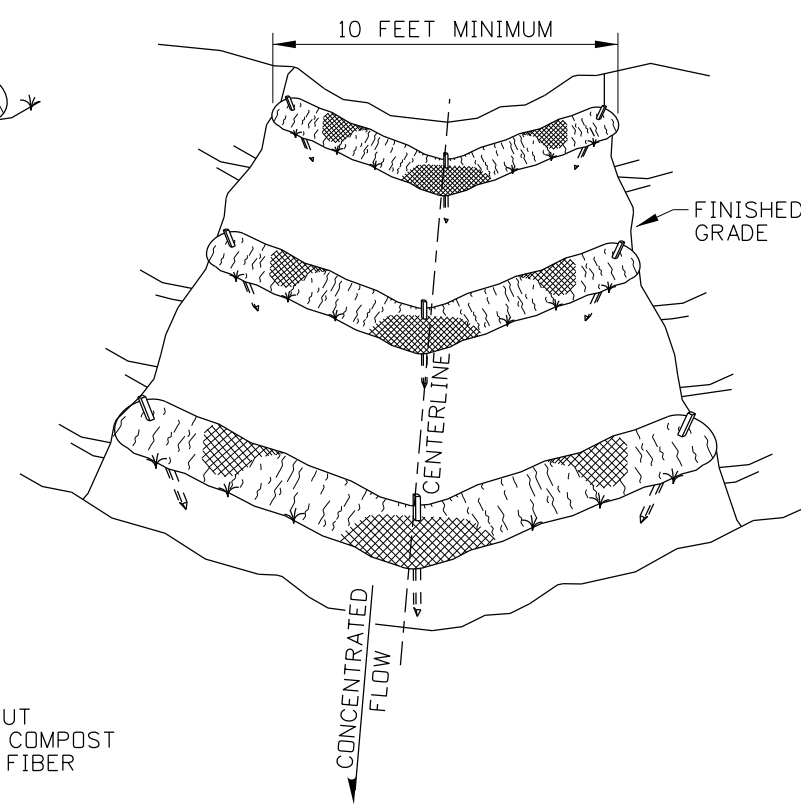
- SEE THE GENERAL NOTES FOR TEMPORARY EROSION CONTROL STANDARD DRAWINGS ON 212-1.
- INSTALL TEMPORARY SEDIMENT CONTROL BARRIERS IN ACCORDANCE WITH MANUFACTURERS INSTRUCTIONS AND SPECIFICATIONS. THE DIMENSIONS SHOWN ARE GENERAL GUIDELINES.
- PLACE SEDIMENT BARRIERS TO FOLLOW THE SLOPE CONTOURS. METAL POSTS OR WOOD STAKES MAY BE USED.
- ENSURE THAT RUNOFF PASSES THROUGH THE SILT FENCE AND NOT AROUND THE FENCE.
- ENSURE THAT SILT FENCE MATERIAL IS IN ACCORDANCE WITH 718.09 OF THE STANDARD SPECIFICATIONS FOR HIGHWAY CONSTRUCTION.
- GROUND SILT FENCES WITH WIRE MESH IN ACCORDANCE WITH THE GROUNDING DETAIL SHOWN ON STANDARD DRAWING 610-1.
- THE NEED FOR TEMPORARY SEDIMENT CONTROL DEVICES ARE DETERMINED BY SITE DESIGN. SPACE SILT FENCES, COMPOST SOCKS, AND FIBER WATTLES IN ACCORDANCE WITH THE SILT FENCE SPACING TABLE AND FIBER WATTLE & COMPOST SOCK SPACING TABLE.
- ON SLOPES, TURN THE ENDS OF EACH ROW OF COMPOST SOCKS AND FIBER WATTLES UPSLOPE TO PREVENT RUNOFF FROM FLOWING AROUND THE SOCK OR WATTLE.
- EXTEND OR JOIN SILT FENCE USING SILT FENCE LAP WITH NESTED POSTS.
- REMOVE SEDIMENT FROM THE UPSLOPE SIDE OF SILT FENCES, COMPOST SOCKS, AND FIBER WATTLES WHEN ACCUMULATION HAS REACHED 1/2 OF THE EFFECTIVE HEIGHT OF THE BARRIER.
- NOT TO SCALE.



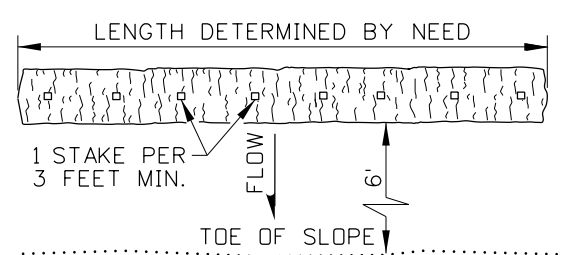
**COMPOST SOCK AND FIBER WATTLE SIDE VIEW**



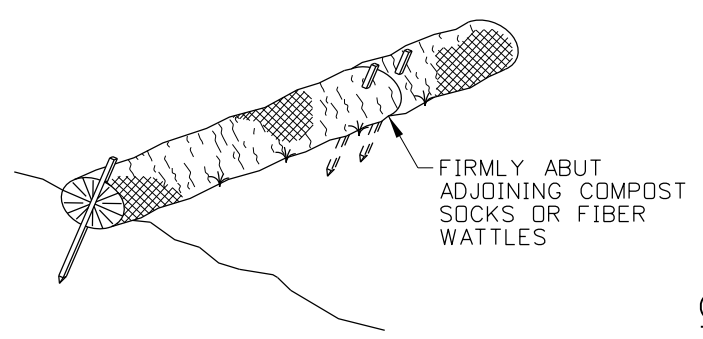
**COMPOST SOCK AND FIBER WATTLE OVERLAPPING DETAIL**



**COMPOST SOCK AND FIBER WATTLE TEMPORARY CHECK DAM DETAIL**



**COMPOST SOCK AND FIBER WATTLE PLAN VIEW**



**COMPOST SOCK AND FIBER WATTLE ABUTTING DETAIL**

ORIGINAL STORED AT: ITD, Headquarters 3311 West State Boise, Idaho

NO.	DATE	BY	NO.	DATE	BY	NO.	DATE	BY
1	09-93	MSM	6	01-13	RDL			
2	12-94	MSM						
3	06-96	GFK						
4	10-10	KEH						
5	10-11	KEH						

SCALES SHOWN ARE FOR 11" X 17" PRINTS ONLY  
 CADD FILE NAME: 212-3\_0213.dgn  
 DRAWING DATE: APRIL, 1993

**IDAHO TRANSPORTATION DEPARTMENT**

BOISE IDAHO

ORIGINAL SIGNED BY: LOREN THOMAS  
 HIGHWAYS PROGRAM OVERSIGHT ENGINEER

ORIGINAL SIGNED BY: TOM COLE  
 CHIEF ENGINEER

STANDARD DRAWING  
**TEMPORARY EROSION AND SEDIMENT CONTROL**  
**SILT FENCE, FIBER WATTLE, AND COMPOST SOCK**  
 REQUIRES STD. DWG. 212-1

**English**  
 STANDARD DRAWING NO.  
**212-3**  
 SHEET 1 OF 1

ORIGINAL SIGNED BY:  
 J. CALEB LAKEY  
 DATE ORIGINAL SIGNED:  
 FEBRUARY 1, 2013