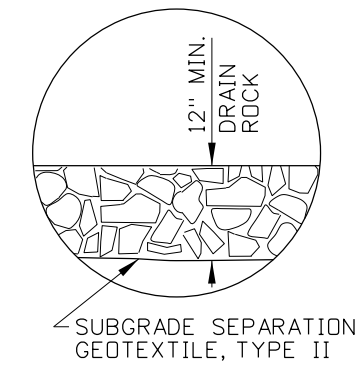
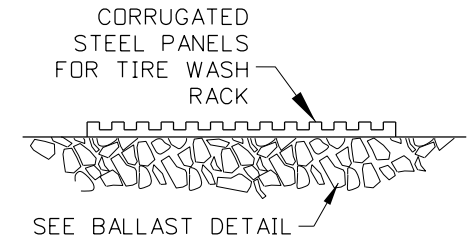


IN-LINE WITH HIGHWAY

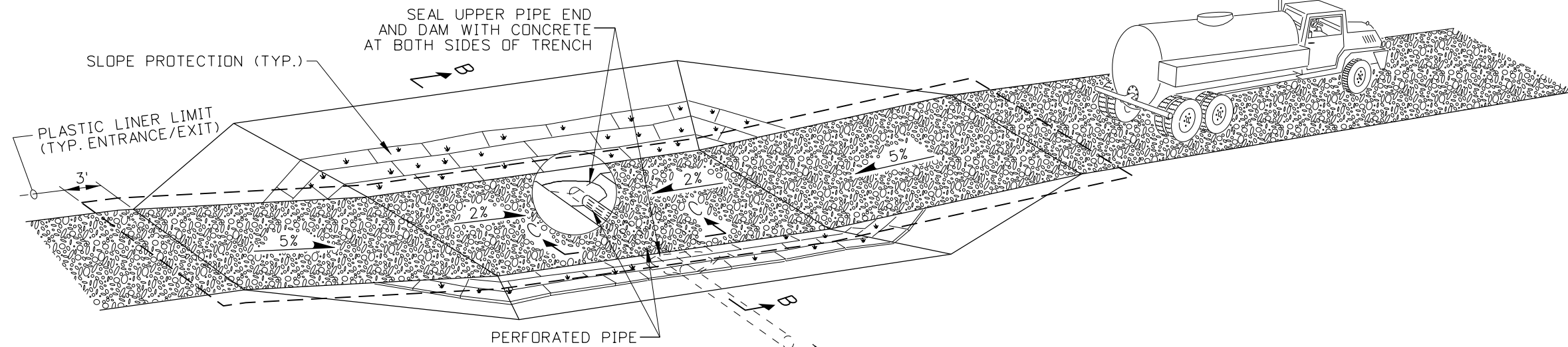
STABILIZED CONSTRUCTION ENTRANCE



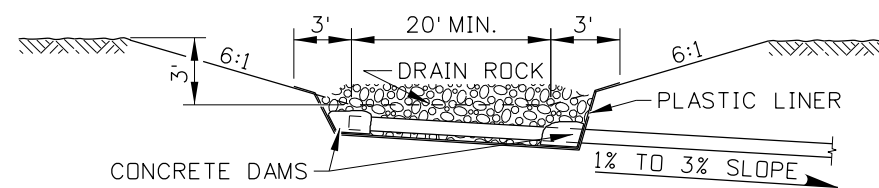
BALLAST DETAIL



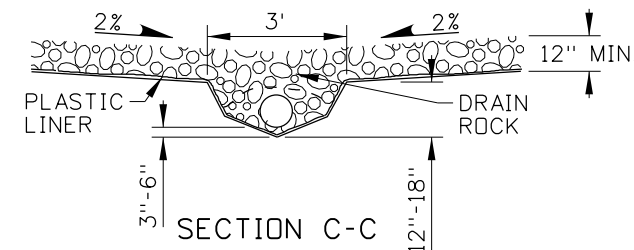
SECTION A-A



VEHICLE AND EQUIPMENT WASHDOWN



SECTION B-B



SECTION C-C

NOTES

1. SEE THE GENERAL NOTES FOR TEMPORARY EROSION CONTROL STANDARD DRAWINGS ON 212-1.
2. DRAWING NOT TO SCALE.

ORIGINAL STORED AT: ITD, Headquarters 3311 West State Boise, Idaho

REVISIONS							
NO.	DATE	BY	NO.	DATE	BY	NO.	DATE

SCALES SHOWN ARE FOR 11" X 17" PRINTS ONLY
 CADD FILE NAME: 212-6_1216.dgn
 DRAWING DATE: NOVEMBER, 2016

IDAHO TRANSPORTATION DEPARTMENT



BOISE IDAHO

ORIGINAL SIGNED BY: TED MASON
 DESIGN/TRAFFIC SERVICES ENGINEER

STANDARD DRAWING
TEMPORARY EROSION AND SEDIMENT CONTROL
STABILIZED CONSTRUCTION ENTRANCE AND VEHICLE WASHDOWN
 REQUIRES STD. DWG. 212-1

English
 STANDARD DRAWING NO.
212-6
 SHEET 1 OF 1

