

SECTION B-B
INLET - TYPE 1
CATCH BASIN - TYPE 1

SECTION B-B
INLET - TYPE 2
CATCH BASIN - TYPE 2

NOTES

- PATTERNS USED IN DRAWING:
 INLET SECTIONS:
 CATCH BASIN BOTTOMS:
 PAVEMENT:
- INLETS AND CATCH BASINS MAY BE EITHER PRECAST OR CAST-IN-PLACE. PRECAST UNITS SHALL MEET THE REQUIREMENTS OF ASTM C 913. (PRIOR APPROVAL OF SHOP DRAWINGS WILL BE REQUIRED ON MODIFIED UNITS.)
- A 1" SIDE DRAFT IS ALLOWED FOR FORM REMOVAL.
- CAST-IN-PLACE INLETS AND CATCH BASINS SHALL CONFORM TO SECTION 609 - MINOR STRUCTURES OF THE CURRENT ITD STANDARD SPECIFICATIONS FOR HIGHWAY CONSTRUCTION.
- THE GRADE LINE OF THE TOP INSIDE OF ANY PIPE SHALL ENTER AT A POINT NO LOWER THAN THE TOP INSIDE OF THE OUTLET PIPE.
- PIPES CAN ENTER OR LEAVE THE BOX IN ANY DIRECTION. ALL CONNECTIONS AND BROKEN AREAS SHALL BE GROUTED SMOOTH.
- STEEL ANGLES SHALL BE SET SO THAT EACH BEARING BAR OF PREFABRICATED GRATE SHALL HAVE FULL BEARING ON BOTH ENDS. THE FINISHED TOP OF CONCRETE SHALL BE EVEN WITH THE ANGLE/GRATE SURFACE. THE STRUCTURAL STEEL NEED NOT BE PAINTED BUT SHALL MEET THE REQUIREMENTS OF ASTM A 36.
- ALL METAL REINFORCEMENT USED SHALL BE NO. 4 BARS. THE METAL REINFORCEMENT SHALL BE SMOOTH CUT TO ACCOMMODATE PIPES.
- GRAY IRON CAST TO THE DIMENSIONS GIVEN FOR THE STEEL GRATES MAY BE USED. THE CASTINGS SHALL CONFORM TO AASHTO M306 CLASS 35B GRAY IRON CASTINGS.
- INLET/CATCH BASIN GRATES MAY EITHER BE RESISTANCE WELDED OR ARC WELDED. IN EITHER CASE THE GRATE SHALL BE TRUE AND FLUSH.
- GRATE B WILL BE USED ONLY WHEN SPECIFIED.
- NOT TO SCALE.

REVISIONS							
NO.	DATE	BY	NO.	DATE	BY	NO.	DATE
1	10-80		6	09-94	MSM	11	11-08
2	04-82		7	06-97	MSM		
3	03-84		8	06-01	MSM		
4	01-89	GB	9	11-04	MSM		
5	12-93	MSM	10	05-07	MSM		

SCALES SHOWN ARE FOR 11" X 17" PRINTS ONLY
 CADD FILE NAME: 605-20_1108.dgn
 DRAWING DATE: JULY, 1961

IDAHO TRANSPORTATION DEPARTMENT

BOISE IDAHO

ORIGINAL SIGNED BY: LOREN THOMAS
 ASSISTANT CHIEF ENGINEER (DEVELOPMENT)

ORIGINAL SIGNED BY: TOM COLE
 CHIEF ENGINEER

STANDARD DRAWING

INLETS & CATCH BASINS TYPES 1, 2, & 3

REQUIRES SHEET 2 OF 2

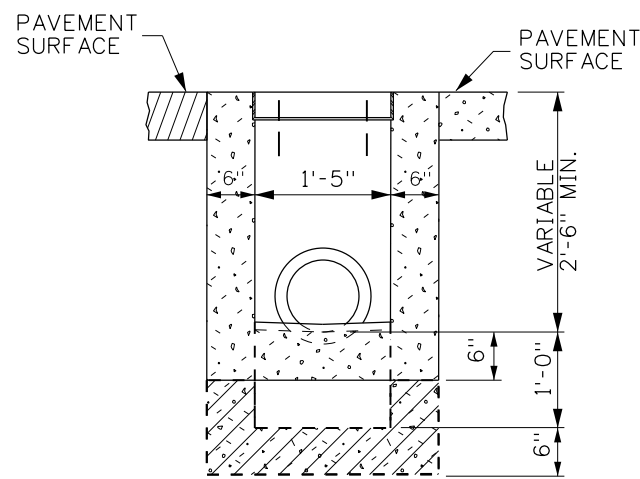
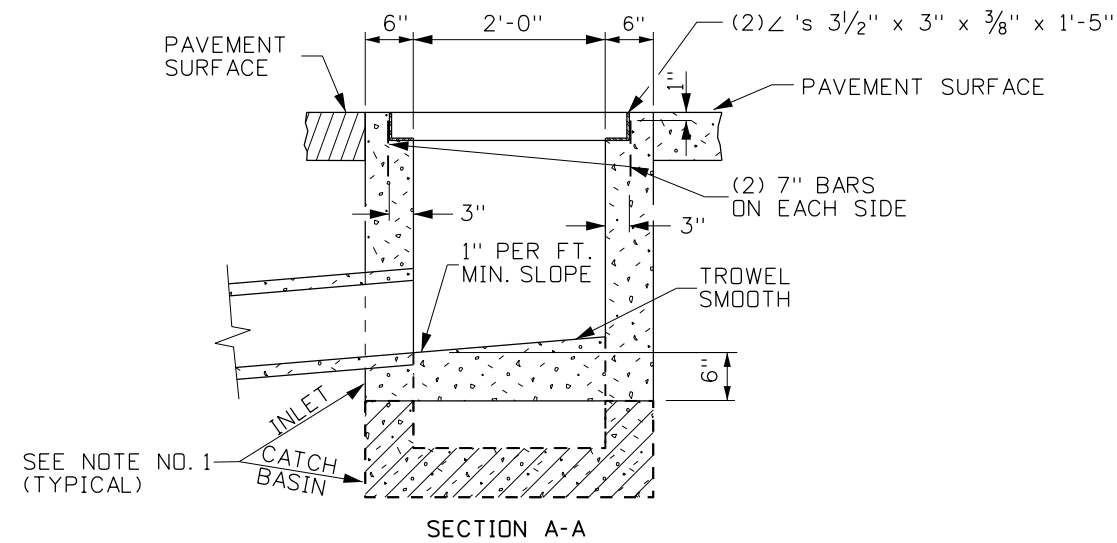
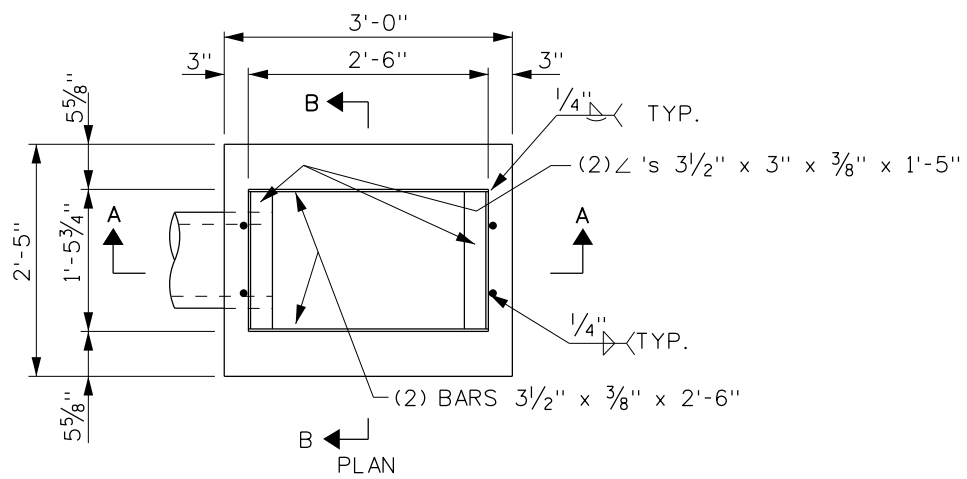
ORIGINAL STORED AT: ITD, Headquarters 3311 West State Boise, Idaho

English

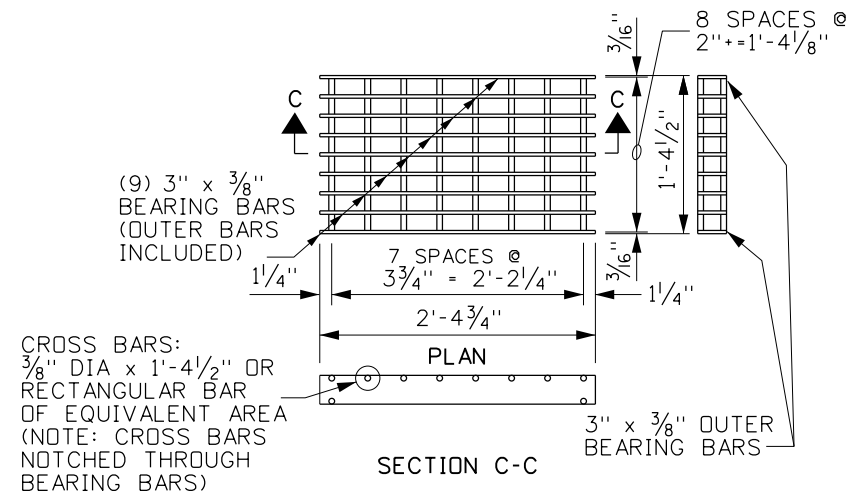
STANDARD DRAWING NO. **605-20**

SHEET 1 OF 2

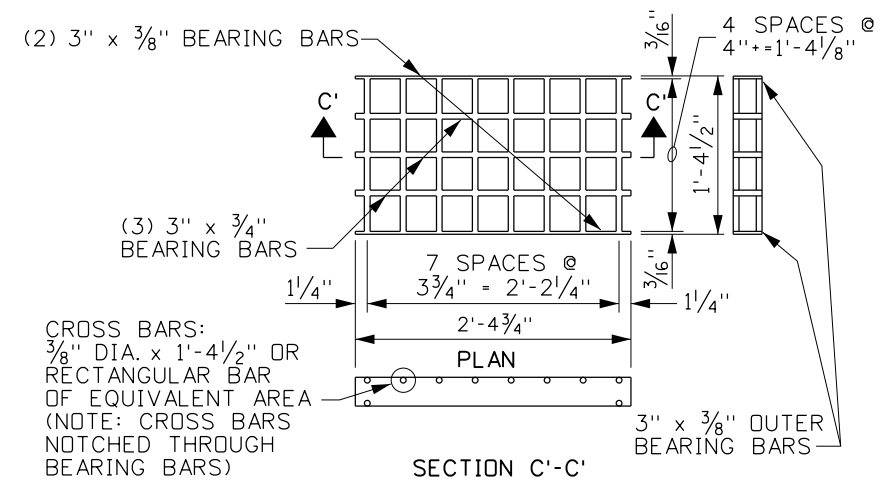
ORIGINAL SIGNED BY: TED E. MASDN
 DATE: ORIGINAL SIGNED: NOVEMBER 3, 2008



SECTION B-B
INLET - TYPE 3
CATCH BASIN - TYPE 3



SECTION C-C
GRATE A (STEEL)
(WEIGHT: APPROXIMATELY 88 LBS., SEE NOTE 9 & 10)



SECTION C'-C'
GRATE B (STEEL)
(WEIGHT: APPROXIMATELY 79 LBS., SEE NOTE 9 & 10)

REVISIONS								
NO.	DATE	BY	NO.	DATE	BY	NO.	DATE	BY
1	10-80		6	09-94	MSM	11	11-08	JRV
2	04-82		7	06-97	MSM			
3	03-84		8	06-01	MSM			
4	01-89	GB	9	11-04	MSM			
5	12-93	MSM	10	05-07	MSM			

SCALES SHOWN
ARE FOR 11" X 17"
PRINTS ONLY

CADD FILE NAME:
605-20_1108.dgn

DRAWING DATE:
JULY, 1961

**IDAHO
TRANSPORTATION
DEPARTMENT**

BOISE IDAHO

ORIGINAL SIGNED BY: LOREN THOMAS
ASSISTANT CHIEF ENGINEER (DEVELOPMENT)

ORIGINAL SIGNED BY: TOM COLE
CHIEF ENGINEER

STANDARD DRAWING

**INLETS & CATCH BASINS
TYPES 1, 2, & 3**

REQUIRES SHEET 1 OF 2

English

STANDARD DRAWING NO.
605-20

SHEET 2 OF 2

ORIGINAL STORED
AT: ITD,
Headquarters
3311 West State
Boise, Idaho

ORIGINAL SIGNED BY:
DATE: TED E. MASDN
NOVEMBER 3, 2008