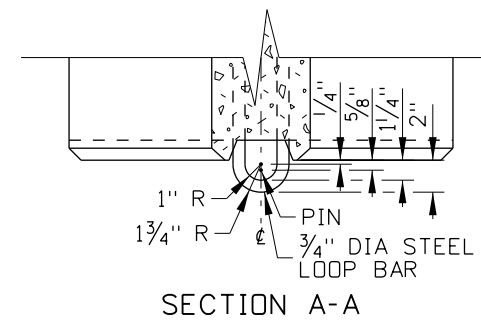
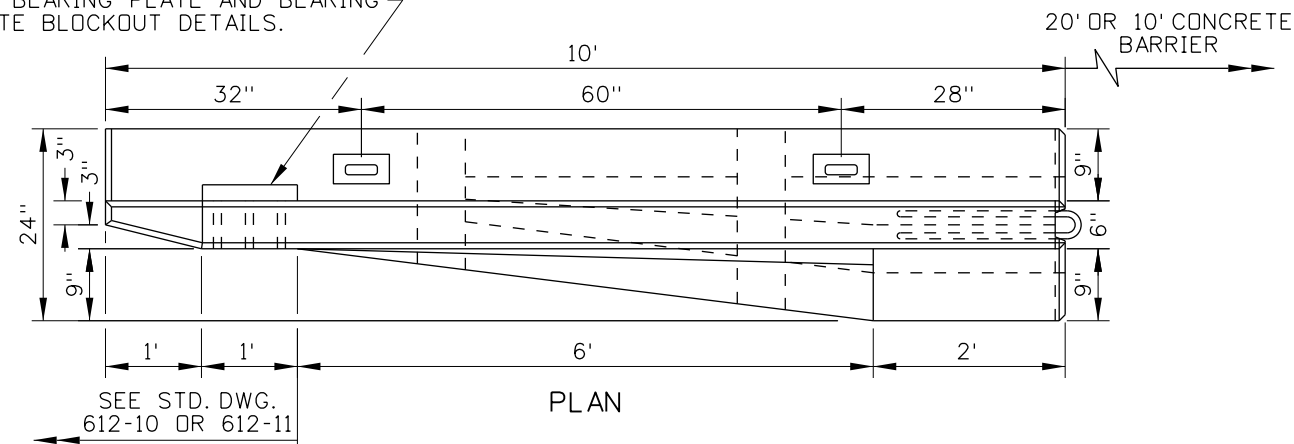
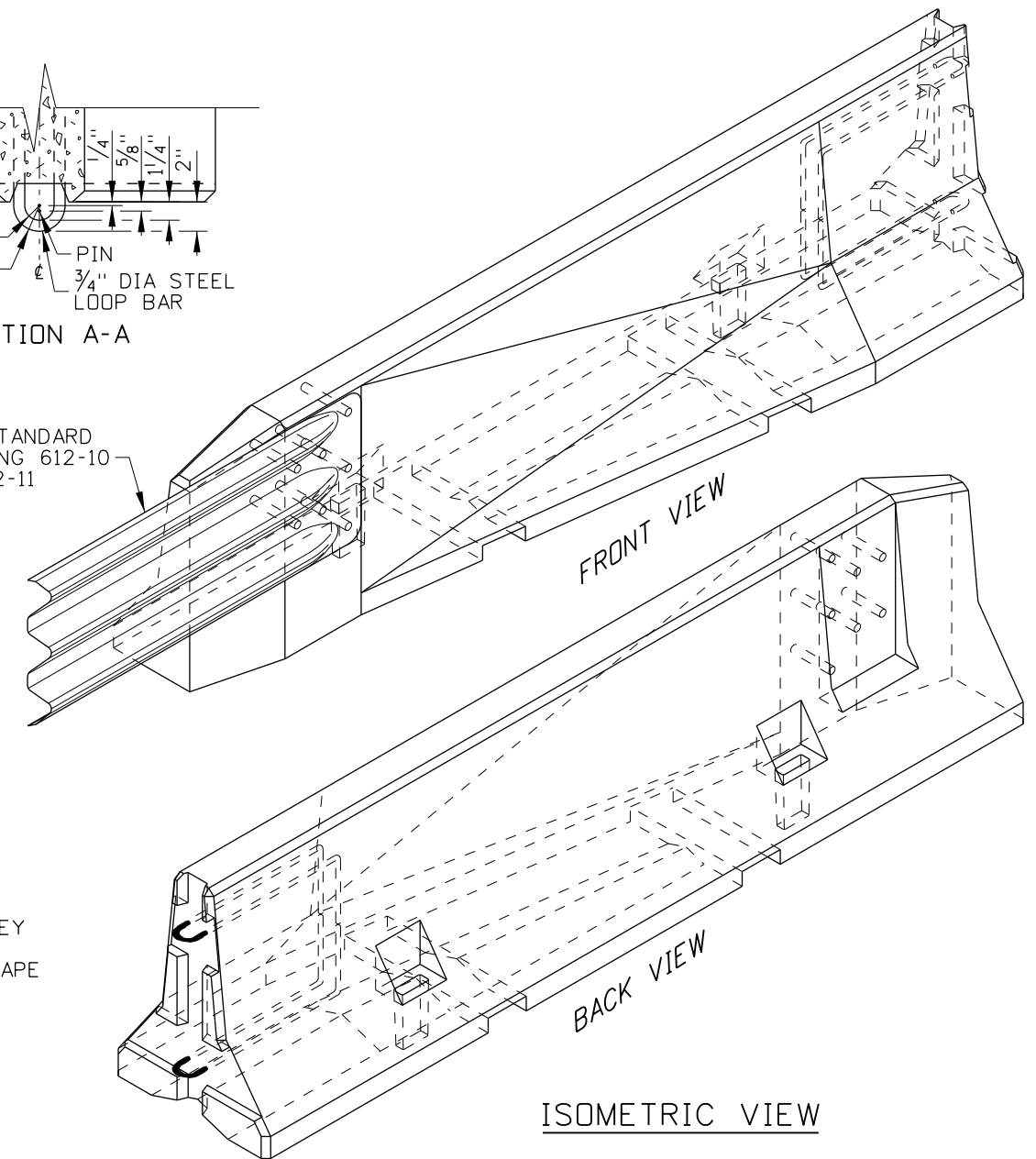


BLOCKOUT FOR BEARING PLATE.
SEE BEARING PLATE AND BEARING
PLATE BLOCKOUT DETAILS.

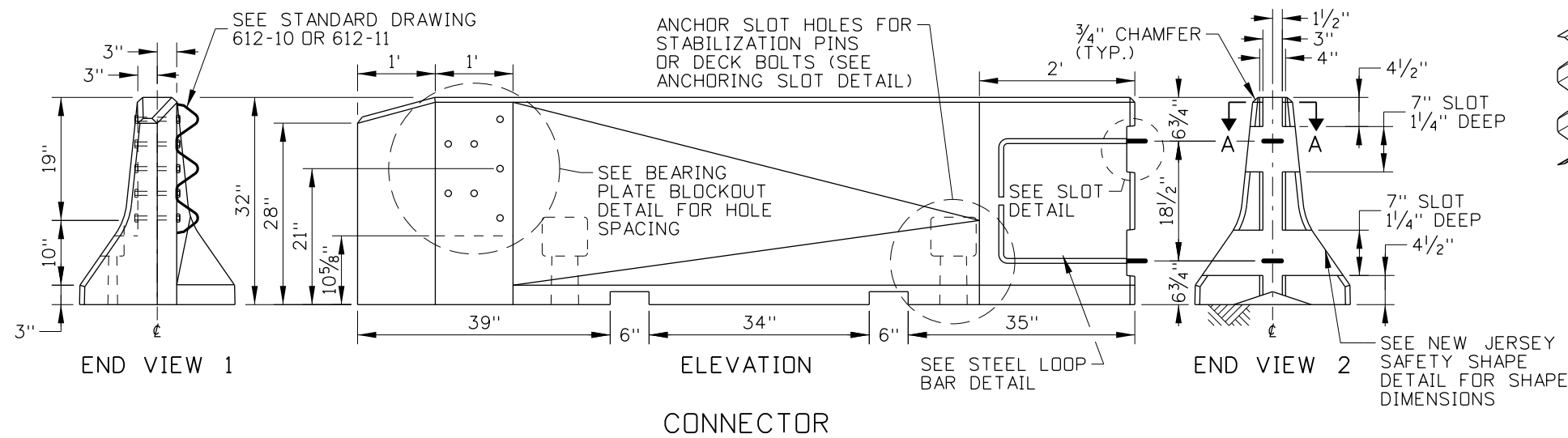


SECTION A-A

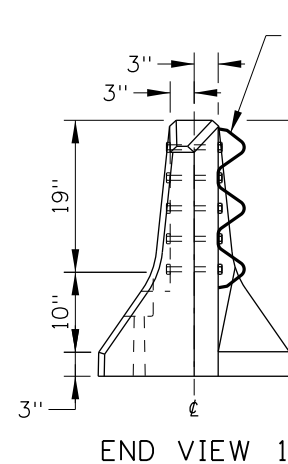
SEE STANDARD
DRAWING 612-10
OR 612-11



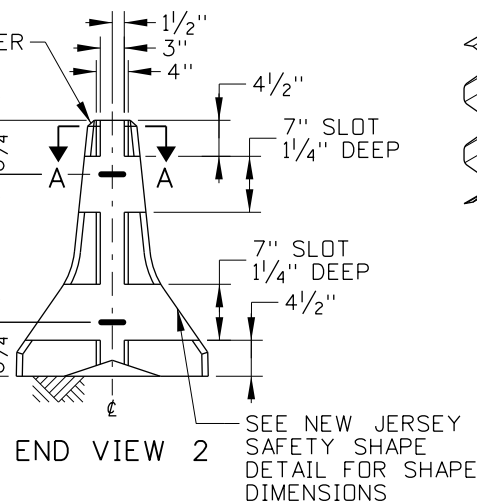
ISOMETRIC VIEW



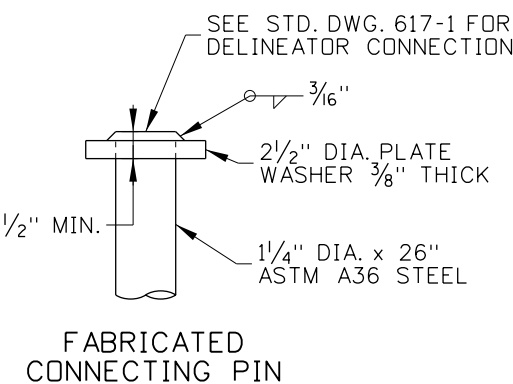
CONNECTOR



END VIEW 1

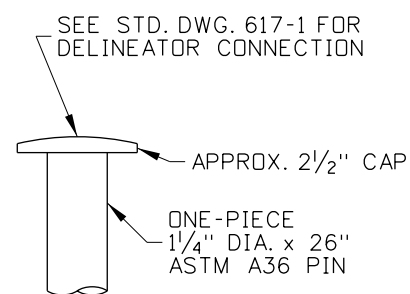


END VIEW 2

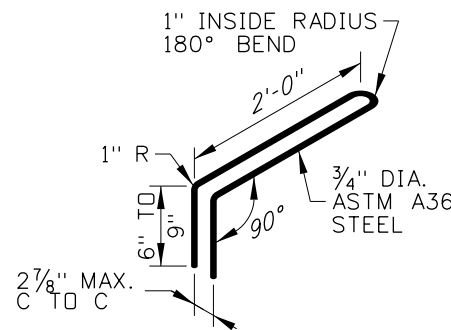


FABRICATED
CONNECTING PIN

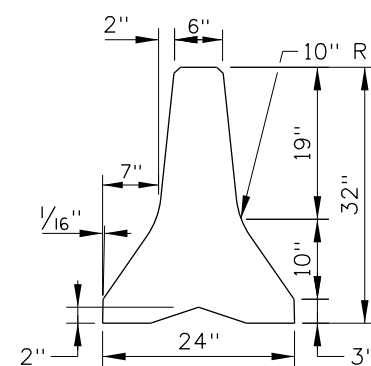
CONNECTING PIN DETAIL
(SEE NOTE NO. 5)



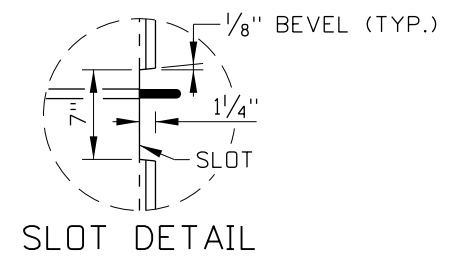
ONE-PIECE
CONNECTING PIN



STEEL LOOP BAR DETAIL



NEW JERSEY SAFETY SHAPE DETAIL



SLOT DETAIL

ORIGINAL STORED
AT: ITD,
Headquarters
3311 West State
Boise, Idaho

REVISIONS							
NO.	DATE	BY	NO.	DATE	BY	NO.	DATE
1	6-80		6	12-94	MSM	11	11-04
2	5-82		7	2-96	MSM	12	10-13
3	7-88	GB	8	5-99	MSM		
4	1-91	GB	9	10-02	MSM		
5	12-92	MSM	10	4-04	MSM		

SCALES SHOWN
ARE FOR 11" X 17"
PRINTS ONLY

CADD FILE NAME:
612-22_1113.dgn

DRAWING DATE:
AUGUST, 1977

**IDAHO
TRANSPORTATION
DEPARTMENT**



BOISE IDAHO

ORIGINAL SIGNED BY: TOM COLE
HIGHWAYS PROGRAM OVERSIGHT ENGINEER

ORIGINAL SIGNED BY: TOM COLE
CHIEF ENGINEER

STANDARD DRAWING

**CONCRETE BARRIER TO THRIE
BEAM GUARDRAIL CONNECTOR**

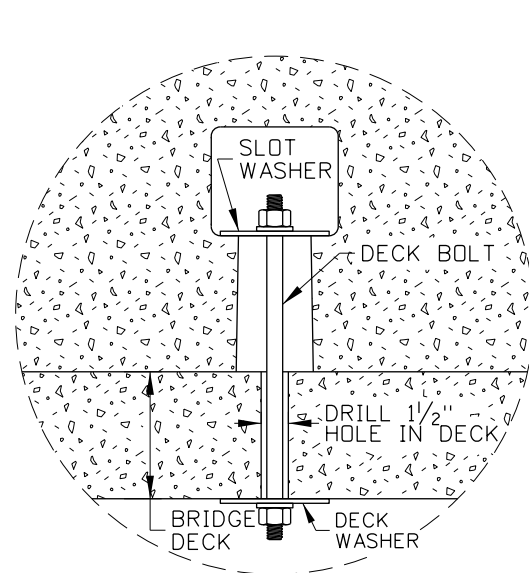
REQUIRES SHEETS 2 OF 3, 3 OF 3,
& STD. DWG. 612-10 OR 612-11

English

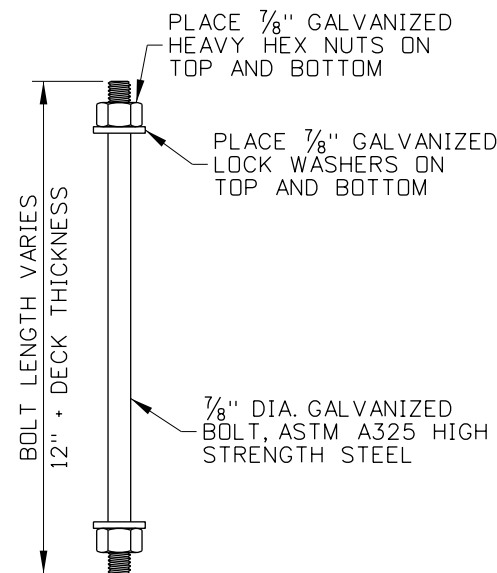
STANDARD DRAWING NO.
612-22

SHEET 1 OF 3

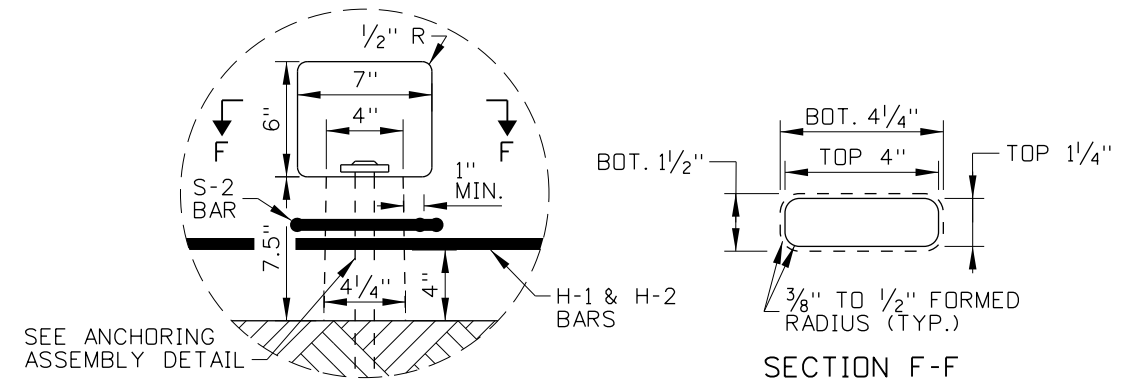
ORIGINAL SIGNED BY:
RYAN D. LANCASTER
DATE ORIGINAL SIGNED:
NOVEMBER 6, 2013



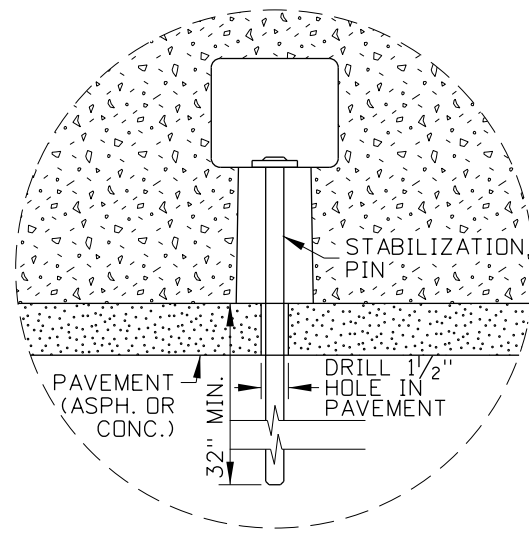
DECK BOLT ANCHORING



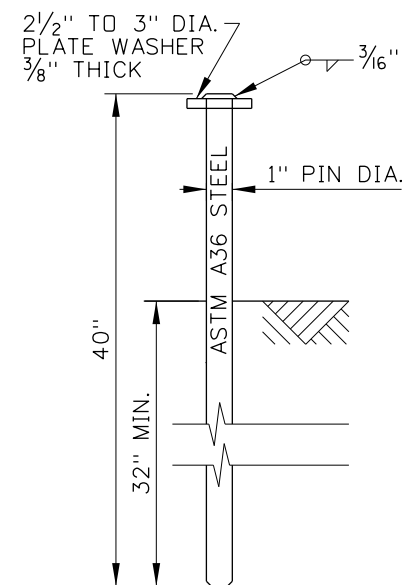
DECK BOLT



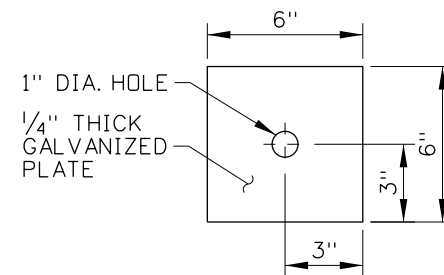
ANCHORING SLOT DETAIL
(SEE NOTE NO. 5)



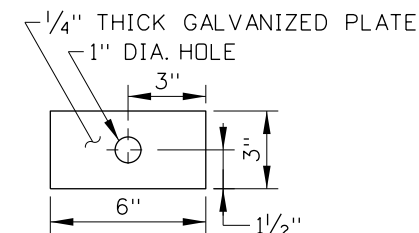
STABILIZATION PIN ANCHORING



STABILIZATION PIN



DECK WASHER



SLOT WASHER

ANCHORING ASSEMBLY DETAIL
(SEE NOTE NO. 5)

NOTES

- CONNECTOR MAY BE PRECAST AS SHOWN OR AS A MIRROR IMAGE FOR USE WITH TRAFFIC TRAVELING IN THE OPPOSITE DIRECTION.
- PRECAST USING CONCRETE CLASS 40A. ENSURE THAT REINFORCING STEEL IS IN ACCORDANCE WITH SECTION 708 - METALS OF THE STANDARD SPECIFICATIONS FOR HIGHWAY CONSTRUCTION. PROVIDE 2" MINIMUM CONCRETE COVER OVER REINFORCING STEEL UNLESS OTHERWISE NOTED.
- ENSURE THAT REINFORCING STEEL BENDS ARE MADE IN ACCORDANCE WITH THE LATEST A.C.I. STANDARD PRACTICES AND AASHTO SPECIFICATIONS.
- THE DIMENSIONS SHOWN IN THE REINFORCING STEEL TABLE ARE MEASURED FROM OUTSIDE-TO-OUTSIDE (O. TO O.) OF BENDS OR BAR ENDS. THE DIMENSIONS SHOWN ON THE METAL REINFORCEMENT DETAIL ARE MEASURED FROM CENTER OF BAR TO CENTER OF BAR.
- ANCHOR THE CONNECTOR TO THE PAVEMENT STRUCTURE SECTION OR BRIDGE DECK USING STABILIZATION PINS OR DECK BOLTS AND CONNECT TO 10' OR 20' CONCRETE BARRIER USING A CONNECTING PIN.
- WHEN CONNECTING TO 10' OR 20' CONCRETE BARRIER, THE EXPOSED STEEL LOOP BARS MAY BE BENT (MECHANICALLY, NOT WITH HEAT) TO FIT.
- PROVIDE THRIE BEAM GUARDRAIL IN ACCORDANCE WITH STANDARD DRAWING 612-2 AND GUARDRAIL TRANSITION IN ACCORDANCE WITH STANDARD DRAWINGS 612-10 OR 612-11.
- NOT TO SCALE.

ORIGINAL STORED AT: ITD, Headquarters 3311 West State Boise, Idaho

ORIGINAL SIGNED BY: RYAN D. LANCASTER DATE ORIGINAL SIGNED: NOVEMBER 6, 2013

REVISIONS								
NO.	DATE	BY	NO.	DATE	BY	NO.	DATE	BY
1	6-80		6	12-94	MSM	11	11-04	MSM
2	5-82		7	2-96	MSM	12	10-13	RDL
3	7-88	GB	8	5-99	MSM			
4	1-91	GB	9	10-02	MSM			
5	12-92	MSM	10	4-04	MSM			

SCALES SHOWN ARE FOR 11" X 17" PRINTS ONLY
CADD FILE NAME: 612-22_1113.dgn
DRAWING DATE: AUGUST, 1977

IDAHO TRANSPORTATION DEPARTMENT
BOISE IDAHO

ORIGINAL SIGNED BY: TOM COLE
HIGHWAYS PROGRAM OVERSIGHT ENGINEER
ORIGINAL SIGNED BY: TOM COLE
CHIEF ENGINEER

STANDARD DRAWING
CONCRETE BARRIER TO THRIE BEAM GUARDRAIL CONNECTOR
REQUIRES SHEETS 1 OF 3, 2 OF 3, & STD. DWG. 612-10 OR 612-11

English
STANDARD DRAWING NO. 612-22
SHEET 3 OF 3