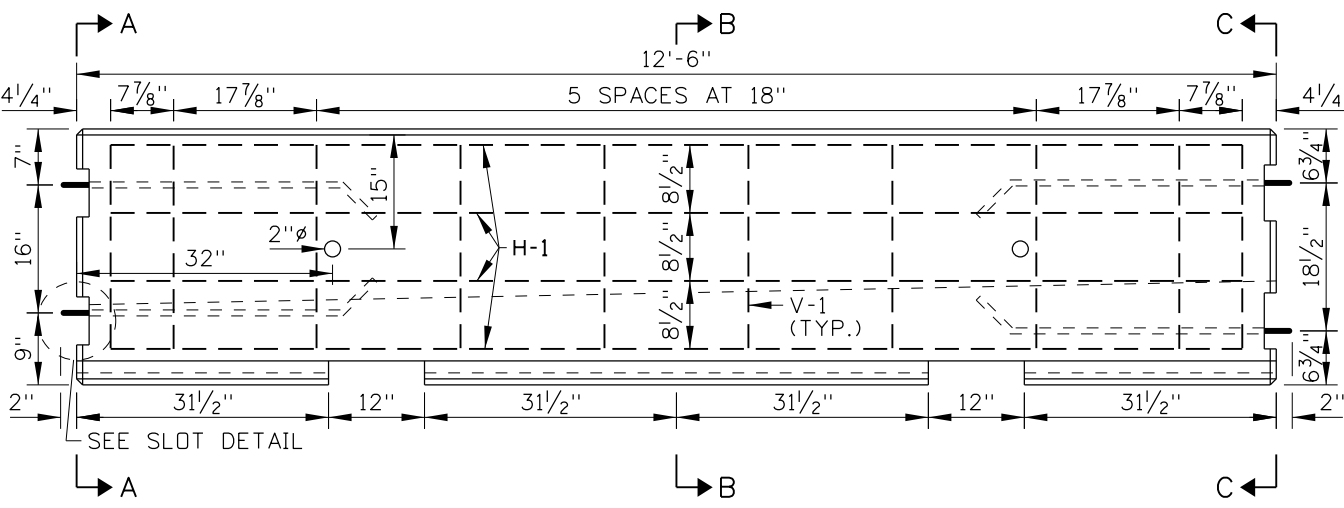
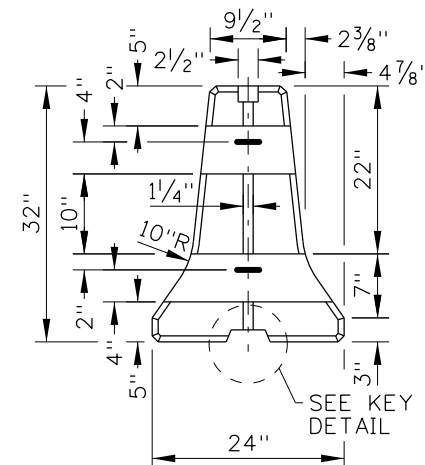


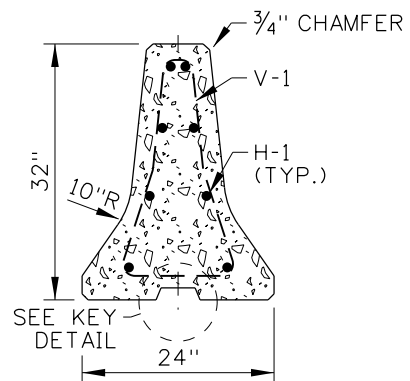
PLAN



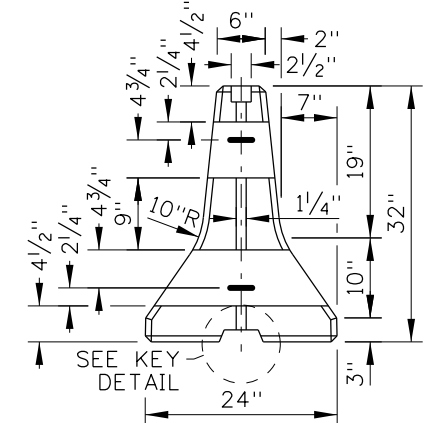
ELEVATION



SECTION A-A  
F-SHAPE

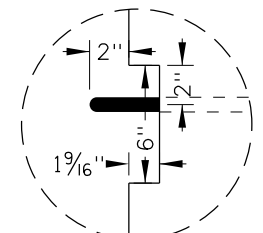


SECTION B-B

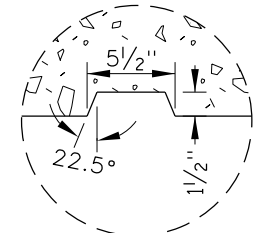


SECTION C-C  
NEW JERSEY SHAPE

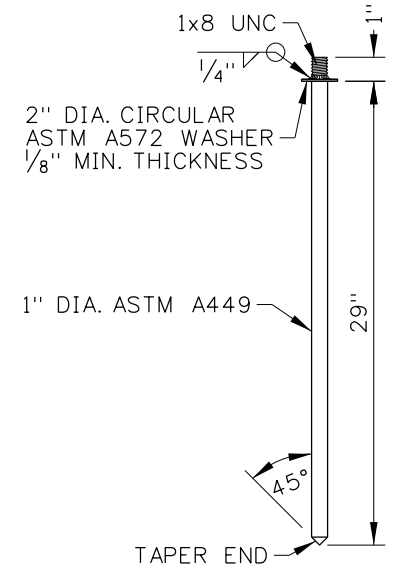
REINFORCING STEEL TABLE				
MARK	LOCATION	BAR SIZE	NUMBER OF BARS	SKETCH
H-1	HORIZONTAL BAR. TIED INSIDE V-1 BARS.	NO. 4	8	11'-10"
V-1	VERTICAL BAR.	NO. 4	10	



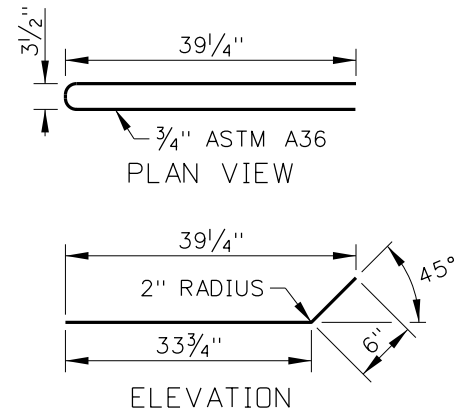
SLOT DETAIL



KEY DETAIL



CONNECTING PIN DETAIL



END LOOP BAR DETAIL

NOTES

1. USE THE F-SHAPE TO NEW JERSEY SHAPE TRANSITION TO CONNECT F-SHAPE PRECAST CONCRETE BARRIER TO NEW JERSEY SHAPE PRECAST CONCRETE BARRIER. A 2" WHITE PVC SLEEVE MAY BE USED TO FORM THE LIFTING HOLE. IF USED, LEAVE THE PVC SLEEVE IN PLACE.
2. PRECAST WITH CLASS 50 AF CONCRETE. CHAMFER TOP, BOTTOM, AND ENDS 3/4". PROVIDE 2" MINIMUM CONCRETE COVER OVER REINFORCING STEEL.
3. PIN CONNECT THE TRANSITION TO THE ADJACENT PRECAST CONCRETE BARRIERS.
4. DRAWING NOT TO SCALE.

REVISIONS							
NO.	DATE	BY	NO.	DATE	BY	NO.	DATE

SCALES SHOWN ARE FOR 11" X 17" PRINTS ONLY  
 CADD FILE NAME: 612-24\_0419.dgn  
 DRAWING DATE: MARCH, 2019

**IDAHO TRANSPORTATION DEPARTMENT**

BOISE IDAHO

ORIGINAL SIGNED BY: KEVIN SABLAN  
 DESIGN/TRAFFIC SERVICES ENGINEER

STANDARD DRAWING  
**F-SHAPE TO NEW JERSEY SHAPE TRANSITION**

**English**  
 STANDARD DRAWING NO.  
**612-24**  
 SHEET 1 OF 1

ORIGINAL STORED AT: ITD, Headquarters 3311 West State Boise, Idaho