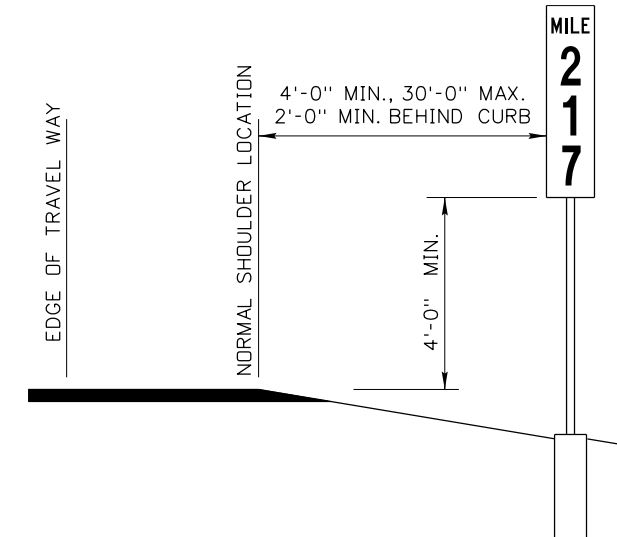
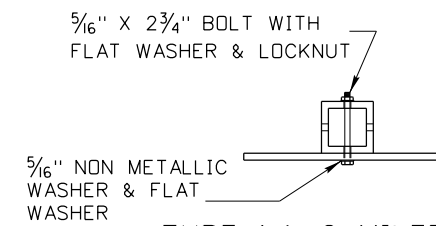


3/8" Ø HOLES TYPICAL  
MILEPOST PLATES

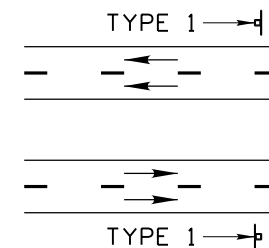
	TYPE 1			TYPE 2 AND 3		
	MILE 2	MILE 2 4	MILE 2 4 5	MILE 2	MILE 2 5	MILE 2 4 5
	D10-5	D10-6	D10-7	D10-1	D10-2	D10-3
SIZE	12" X 24"	12" X 36"	12" X 48"	10" X 18"	10" X 27"	10" X 36"
NO. OF HOLES	2	2	3	2	2	2
N	2"	2"	2"	2"	2"	2"
O	20"	32"	44"	14"	23"	32"
P	-	-	22"	-	-	-



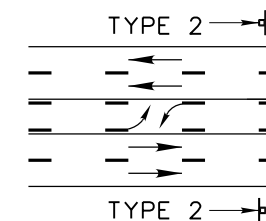
TYPICAL INSTALLATION



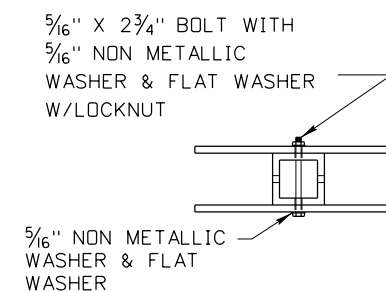
TYPE 1 & 2 MILEPOSTS



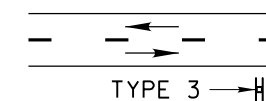
EXPRESSWAYS AND FREEWAYS



OTHER DIVIDED & UNDIVIDED  
MULTI-LANE HIGHWAYS



TYPE 3 MILEPOSTS

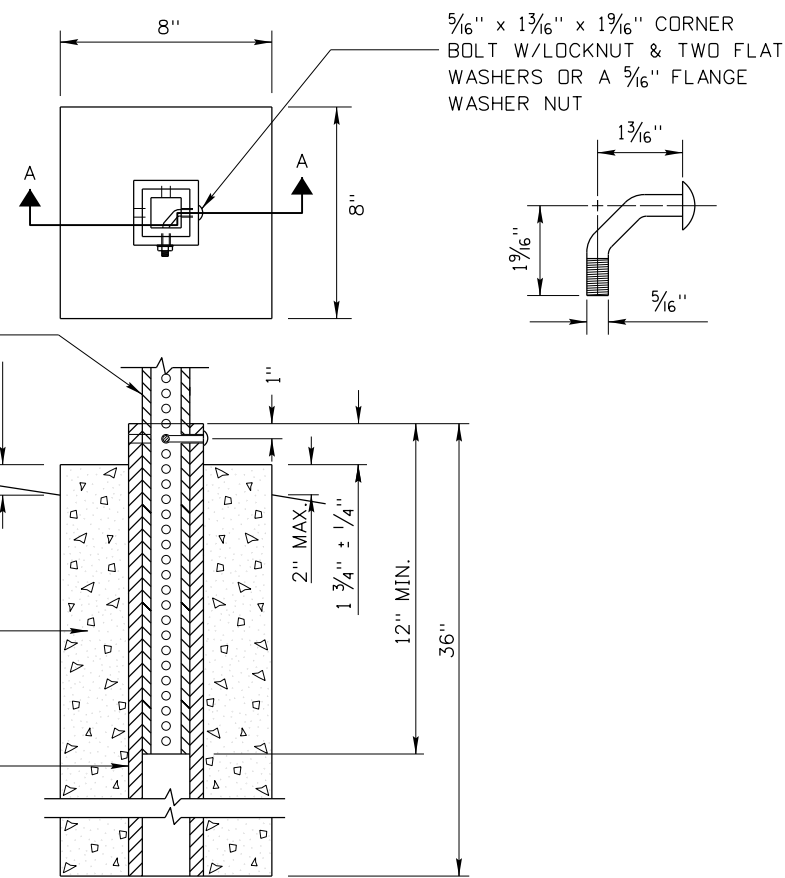


TWO LANE -  
TWO WAY HIGHWAYS

TYPE E-1 SIGN POST  
2" X 2" PERFORATED  
SQUARE TUBING, 12  
GAUGE  
2.42 LB./FT. WEIGHT

GROUND  
LINE  
2" MAX.  
CLASS 30  
CONCRETE

TYPE E-1 ANCHOR POST  
2 1/2" X 2 1/2" GALVANIZED  
SQUARE TUBING, 7 GAUGE  
NO PERFORATIONS  
5.59 LB./FT. WEIGHT



2" X 2" SIGN POST INSTALLATION DETAILS

NOTES

- ON EXPRESSWAYS, FREEWAYS OR MULTI-LANE HIGHWAYS, PLACE A MILEPOST ASSEMBLY IN EACH DIRECTION OF TRAVEL. ON TWO LANE ROADWAYS, MILEPOSTS SHOULD BE PLACED ON THE ON THE RIGHT SIDE OF THE ROAD WAY IN THE DIRECTION OF ASCENDING MILE POSTS.
- DO NOT ATTACH MILEPOST PLATES UNTIL THE CONCRETE HAS SET WHEN FOUNDATIONS ARE CAST IN PLACE.
- ENSURE THE BOTTOM OF ANCHOR IS LEFT OPEN TO DRAIN.
- DRAWING NOT TO SCALE.

REVISIONS							
NO.	DATE	BY	NO.	DATE	BY	NO.	DATE

SCALES SHOWN  
ARE FOR 11" X 17"  
PRINTS ONLY  
CADD FILE NAME:  
617-2\_0515.dgn  
DRAWING DATE:  
MAY, 2015

IDAHO  
TRANSPORTATION  
DEPARTMENT

BOISE IDAHO

ORIGINAL SIGNED BY: KEVIN SABLAN  
DESIGN/TRAFFIC SERVICES ENGINEER

STANDARD DRAWING  
MILEPOSTS

ORIGINAL STORED  
AT: ITD,  
Headquarters  
3311 West State  
Boise, Idaho

**English**  
STANDARD DRAWING NO.  
**617-2**  
SHEET 1 OF 1

ORIGINAL SIGNED BY:  
RYAN D. LANCASTER  
DATE ORIGINAL SIGNED:  
JUNE 9, 2015