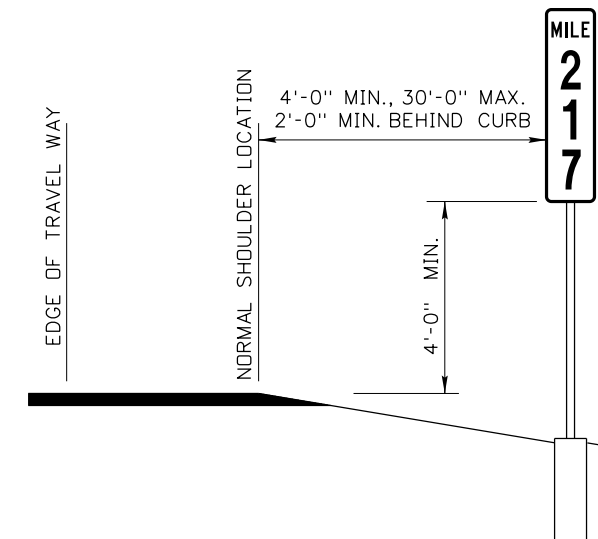
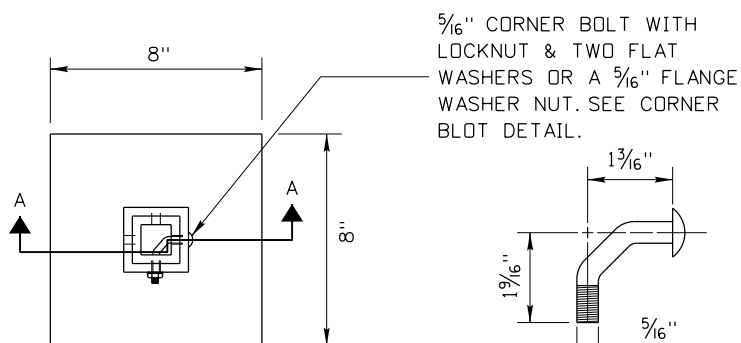


3/8" Ø HOLES TYPICAL
MILEPOST SIGNS

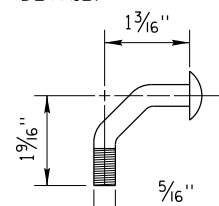
	TYPE 1			TYPE 2 AND 3		
SIZE	12" X 24"	12" X 36"	12" X 48"	10" X 18"	10" X 27"	10" X 36"
NO. OF HOLES	2	2	3	2	2	2
N	2"	2"	2"	2"	2"	2"
O	20"	32"	44"	14"	23"	32"
P	-	-	22"	-	-	-



SIGN HEIGHT AND LATERAL LOCATION

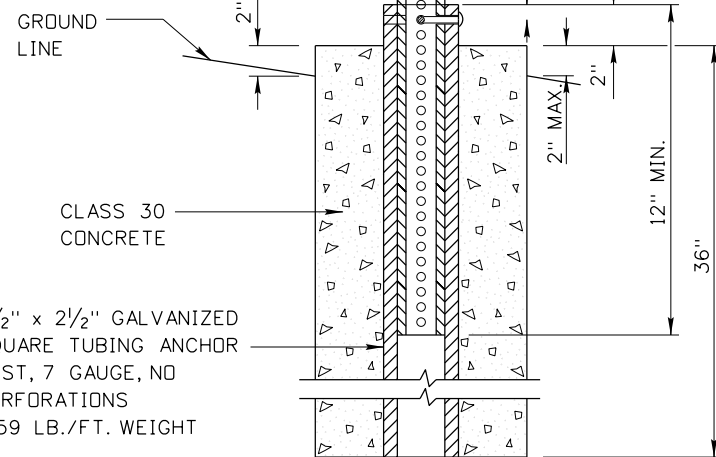


5/16" CORNER BOLT WITH LOCKNUT & TWO FLAT WASHERS OR A 5/16" FLANGE WASHER NUT. SEE CORNER BOLT DETAIL.



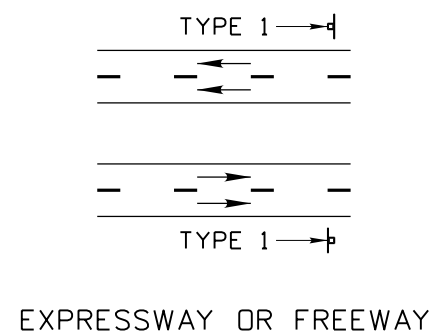
CORNER BOLT DETAIL

2" X 2" PERFORATED SQUARE TUBING SIGN POST, 12 GAUGE
2.42 LB./FT. WEIGHT

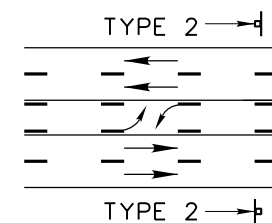


SECTION A-A

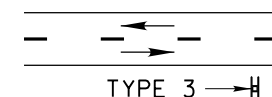
SIGN POST INSTALLATION DETAILS



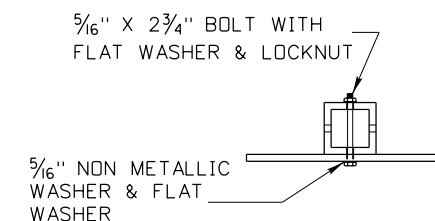
EXPRESSWAY OR FREEWAY



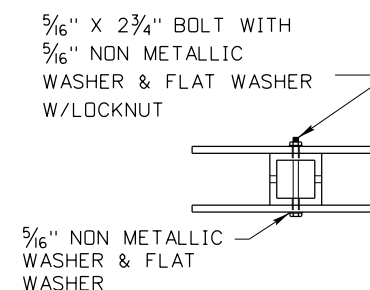
UNDIVIDED MULTI-LANE HIGHWAY



TWO LANE HIGHWAYS



TYPE 1 & 2 MILEPOST SIGN



TYPE 3 MILEPOST SIGN

NOTES

- ON EXPRESSWAYS, FREEWAYS OR MULTI-LANE HIGHWAYS, PLACE A MILEPOST ASSEMBLY IN EACH DIRECTION OF TRAVEL. ON TWO LANE ROADWAYS, BACK TO BACK MILEPOST ASSEMBLIES MAY BE INSTALLED ON THE ON THE RIGHT SIDE OF THE ROADWAY IN THE DIRECTION OF ASCENDING MILE POSTS.
- INSTALL SIGN POST AND ANCHOR OR GROUT INTO SOLID ROCK. IF INSTALLED IN ROCK, ENSURE THE ANCHOR POST IS EMBEDDED 18" INTO SOLID ROCK.
- DO NOT ATTACH MILEPOST SIGNS UNTIL THE CONCRETE HAS SET WHEN FOUNDATIONS ARE CAST IN PLACE.
- ENSURE THAT THE BOTTOM OF ANCHOR IS LEFT OPEN TO DRAIN.
- DRAWING NOT TO SCALE.

REVISIONS								
NO.	DATE	BY	NO.	DATE	BY	NO.	DATE	BY
1	05-15	HEB						
2	12-15	HEB						

SCALES SHOWN ARE FOR 11" X 17" PRINTS ONLY
CADD FILE NAME: 617-2_1215.dgn
DRAWING DATE: MAY, 2015

IDAHO TRANSPORTATION DEPARTMENT

BOISE IDAHO

ORIGINAL SIGNED BY: KEVIN SABLAN
DESIGN/TRAFFIC SERVICES ENGINEER

STANDARD DRAWING
MILEPOST ASSEMBLIES

ORIGINAL STORED AT: ITD, Headquarters 3311 West State Boise, Idaho

English
STANDARD DRAWING NO.
617-2
SHEET 1 OF 1