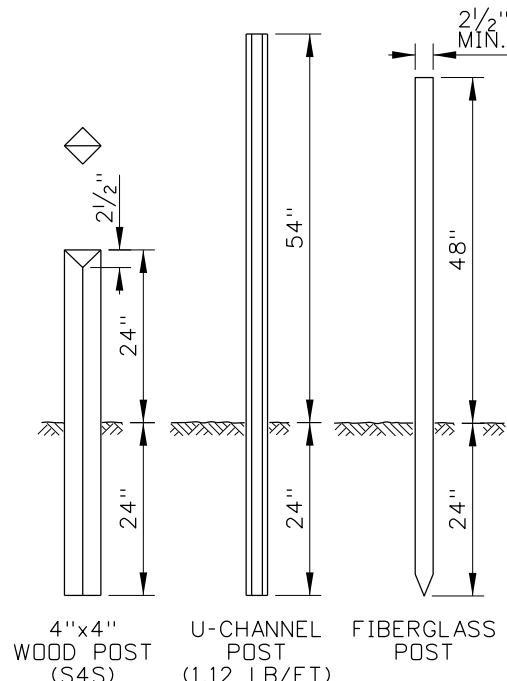


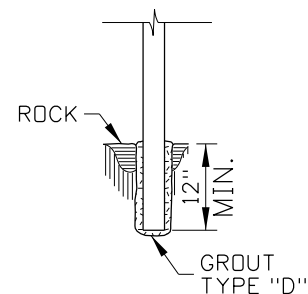
SOLID ROCK INSTALLATION

EARTH INSTALLATION

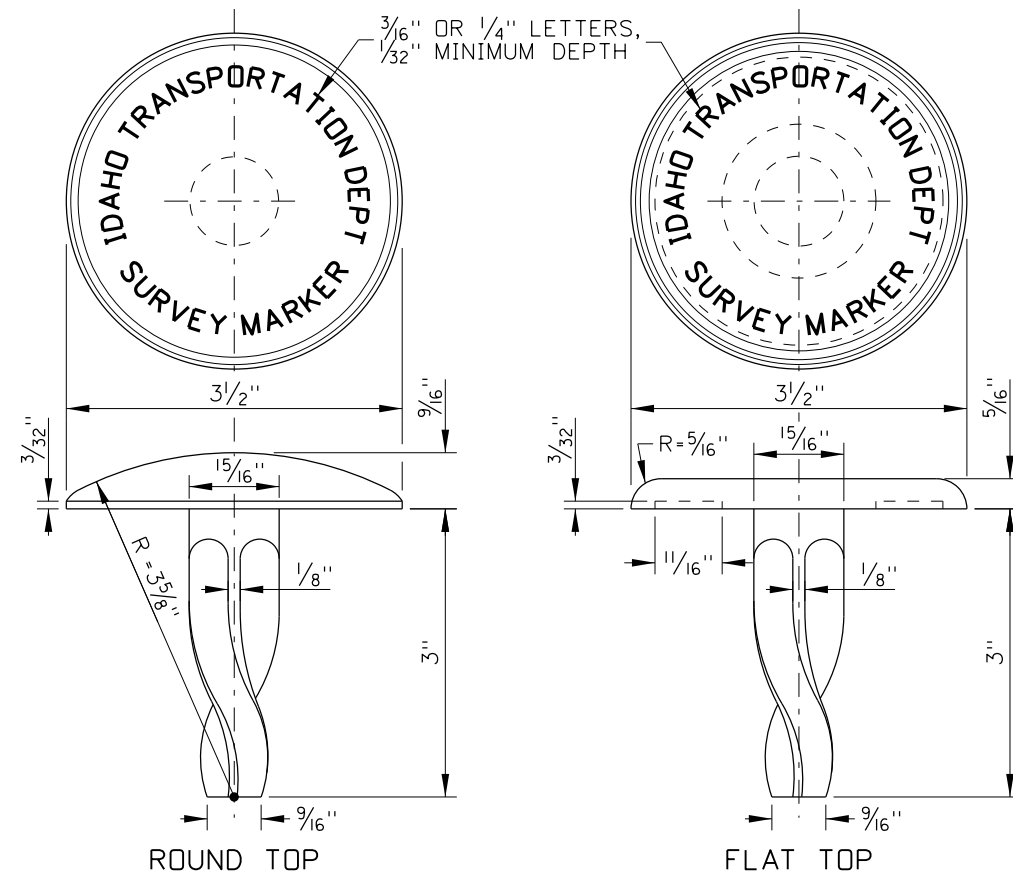
MONUMENT MARKER



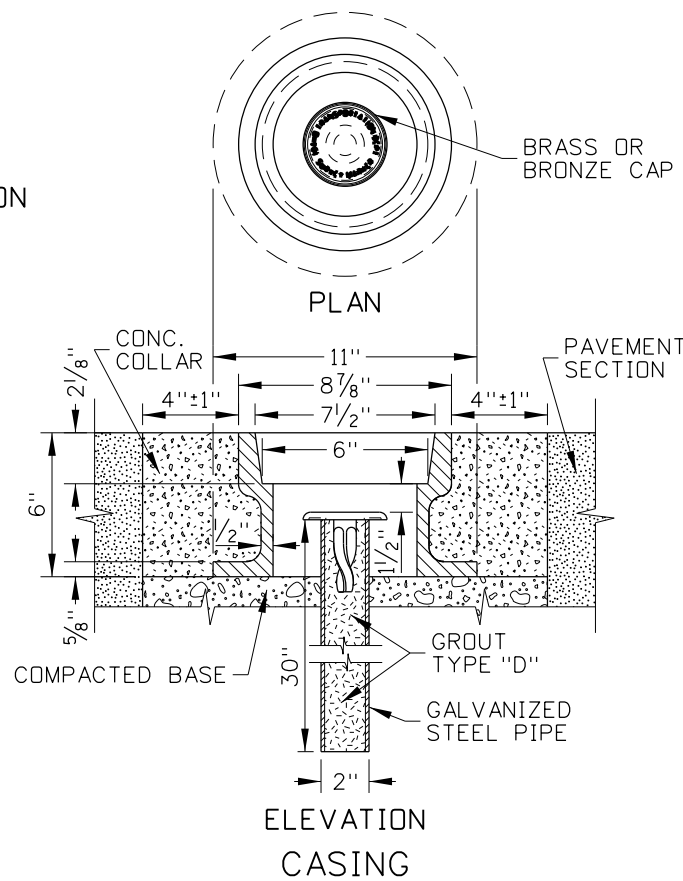
WITNESS POSTS



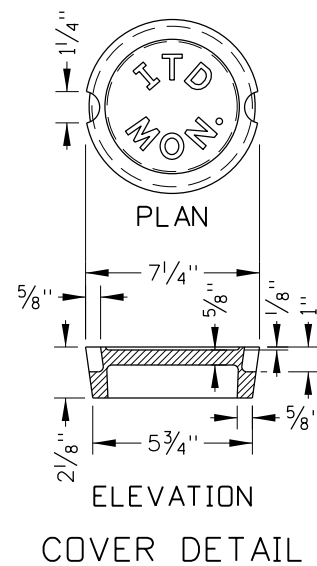
WITNESS POST SOLID ROCK INSTALLATION DETAIL



BRASS OR BRONZE CAP DETAILS



ELEVATION CASING

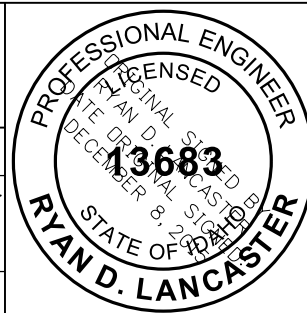


ELEVATION COVER DETAIL

NOTES

1. SURVEY MONUMENTS CAN BE PRECAST OR CAST-IN-PLACE. SET THE BRASS CAP IN THE TOP CENTER OF THE MONUMENT.
2. USE ROUND TOP MARKERS FOR VERTICAL CONTROL, HORIZONTAL CONTROL, OR BOTH. USE FLAT TOP MARKERS FOR HORIZONTAL CONTROL.
3. ENSURE THAT HORIZONTAL CONTROL MARKERS ARE PLACED WITHIN 1/2" OF THE POINT ESTABLISHED. THE VERTICAL CONTROL POINT IS THE HIGHEST POINT OF THE ROUND TOP CAP.
4. REINFORCE EARTH INSTALLATION MONUMENT MARKER WITH FOUR NO. 2 BARS, 33 1/2" LONG, AND PLACED AN EQUAL DISTANCE APART. TIE WITH NO. 8 WIRE AT 10" INTERVALS.
5. USE CASING WHEN THE MONUMENT IS PLACED IN PAVEMENT. THE MONUMENT MAY BE PLACED CLOSER TO THE GROUND OR IN CASING IN AREAS THAT ARE MOWED. OTHER CASING DESIGNS MAY BE USED WITH APPROVAL FROM THE ENGINEER.
6. MACHINE COVER AND CASING CONTACT SURFACES TO A TRUE BEARING ALL AROUND.
7. THE MONUMENT MARKER MAY BE USED AS A RIGHT-OF-WAY MARKER, PROJECT MARKER, REFERENCE MARKER, CONTROL POINT, OR PROPERTY CORNER.
8. STAMP THE MONUMENT CAP ACCORDING TO ITS PURPOSE. "ROW" FOR RIGHT-OF-WAY MARKER, "PRJ" FOR PROJECT MARKER, "REF" FOR REFERENCE MARKER, "CTL" FOR CONTROL POINT, OR "COR" FOR PROPERTY CORNER.
9. PLACE THE WITNESS POSTS AS CLOSE TO THE MARKERS AS PRACTICAL. WHEN SOLID ROCK IS ENCOUNTERED, GROUT THE WITNESS POST AS SHOWN IN THE WITNESS POST SOLID ROCK INSTALLATION DETAIL.
10. DRAWINGS NOT TO SCALE.

ORIGINAL STORED AT: ITD, Headquarters 3311 West State Boise, Idaho



REVISIONS							
NO.	DATE	BY	NO.	DATE	BY	NO.	DATE
1	05-62		6	01-68		11	06-02
2	06-62		7	09-72		12	12-04
3	05-65		8	07-90	GB	13	11-06
4	09-66		9	09-93	MSM	14	12-12
5	04-67		10	05-95	MSM	15	11-15

SCALES SHOWN ARE FOR 11" X 17" PRINTS ONLY  
 CADD FILE NAME: 618-1\_1215.dgn  
 DRAWING DATE: APRIL, 1961

IDAHO TRANSPORTATION DEPARTMENT  
 BOISE IDAHO

ORIGINAL SIGNED BY: TED E. MASON for  
 DESIGN/TRAFFIC SERVICES ENGINEER

STANDARD DRAWING  
 MARKER POSTS, WITNESS POSTS, AND STREET MONUMENTS

English  
 STANDARD DRAWING NO. 618-1  
 SHEET 1 OF 1