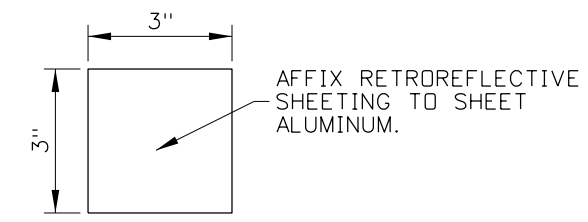
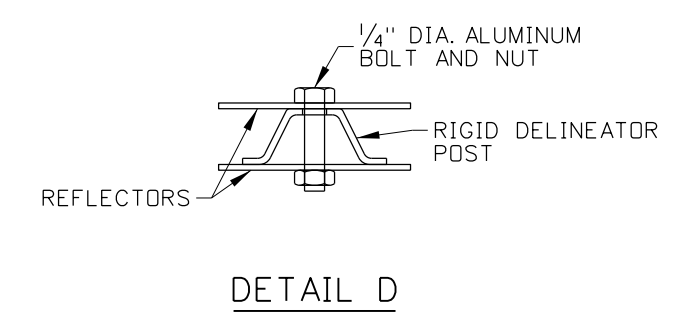
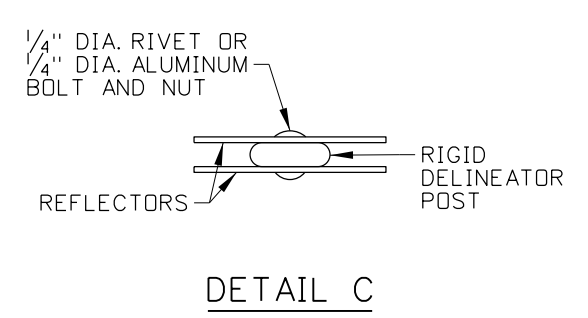
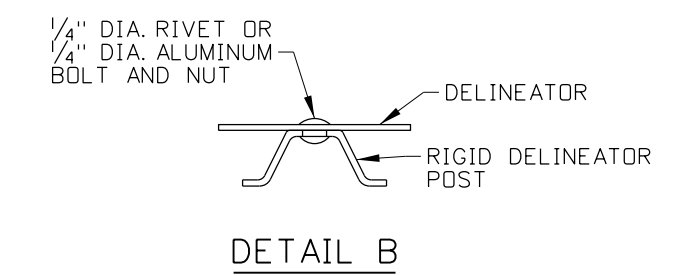
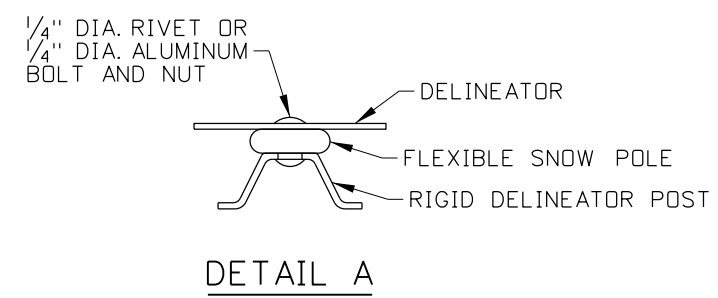


SNOW POLE INSTALLATION



NOTES

1. ATTACH FLEXIBLE SNOW POLES TO DELINEATOR POLES OR INSTALL RIGID POLE DELINEATORS AND SNOWPOLES AT THE SPACING SHOWN ON THE DELINEATOR STANDARD DRAWING.
2. THE REFLECTOR CAN BE MADE OF THE SAME MATERIAL AND HAVE THE SAME DIMENSIONS AS SINGLE DELINEATORS, OR THEY CAN BE RETROREFLECTIVE SHEETING ATTACHED DIRECTLY TO THE FLEXIBLE SNOW POLE.
3. USE WHITE RETROREFLECTIVE MATERIAL FOR THE REFLECTOR.
4. DO NOT CONNECT MULTIPLE SECTIONS OF RIGID DELINEATOR POLES TO ACHIEVE THE SNOW POLE HEIGHT.
5. DRAWINGS NOT TO SCALE.

REVISIONS								
NO.	DATE	BY	NO.	DATE	BY	NO.	DATE	BY
1	05-05	MSM						
2	04-14	RDL						
3	12-18	RDL						

SCALES SHOWN ARE FOR 11" X 17" PRINTS ONLY
CADD FILE NAME: 628-1_1218.dgn
DRAWING DATE: DECEMBER, 2002

IDAHO TRANSPORTATION DEPARTMENT



BOISE IDAHO

ORIGINAL SIGNED BY: KEVIN SABLAN
DESIGN/TRAFFIC SERVICES ENGINEER

STANDARD DRAWING
SNOW POLES
REQUIRES STD. DWG. 617-1

ORIGINAL STORED AT: ITD, Headquarters 3311 West State Boise, Idaho

English

STANDARD DRAWING NO.
628-1

SHEET 1 OF 1

ORIGINAL SIGNED BY:
RYAN D. LANCASTER
DATE ORIGINAL SIGNED:
DECEMBER 28, 2018