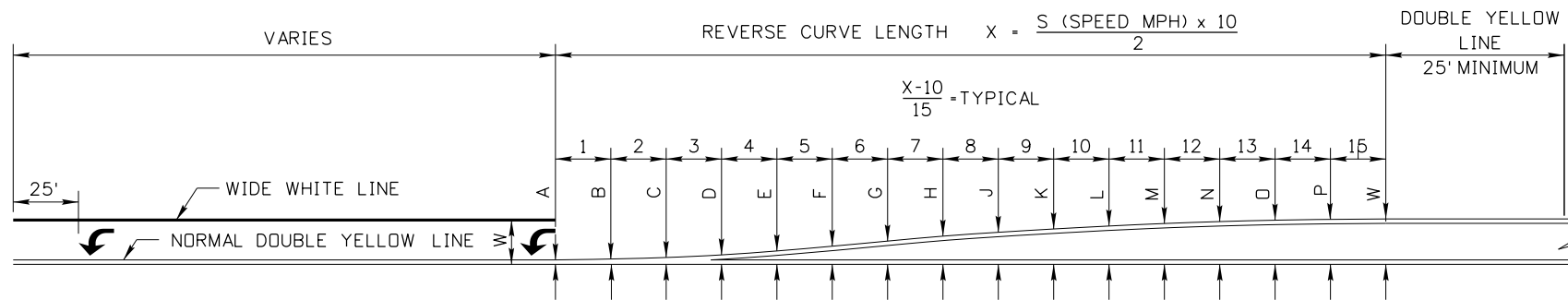
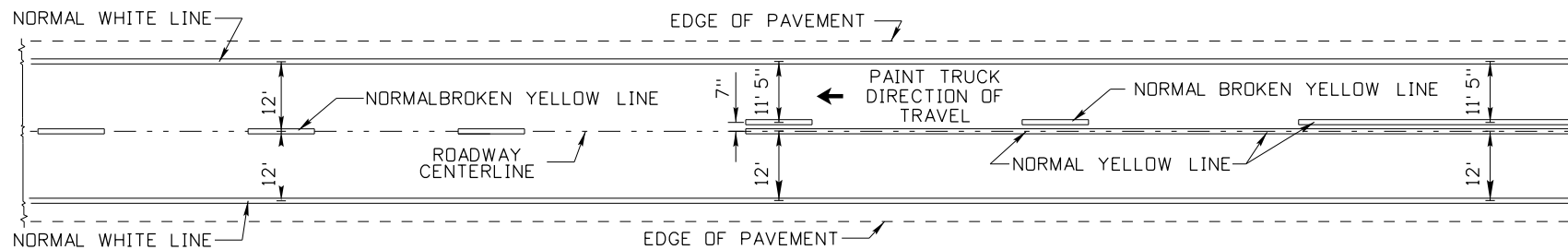


10', 12' AND 14' MEDIAN WIDTH

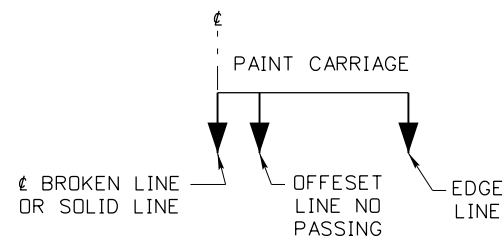


W	A	B	C	D	E	F	G	H	J	K	L	M	N	O	P	W
12.0'	.9'	1.1'	1.5'	2.2'	3.3'	4.6'	6.0'	7.3'	8.4'	9.3'	10.1'	10.8'	11.3'	11.7'	11.9'	12.0'
14.0'	3.0'	3.1'	3.6'	4.3'	5.3'	6.7'	8.1'	9.3'	10.4'	11.4'	12.2'	12.8'	13.3'	13.7'	13.9'	14.0'

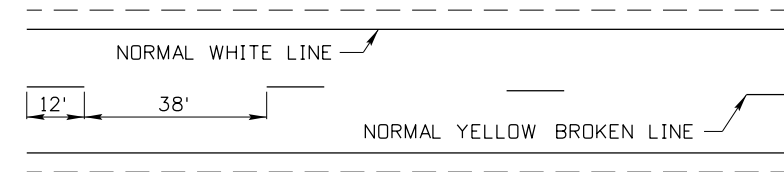
12' AND 14' MEDIAN WIDTH



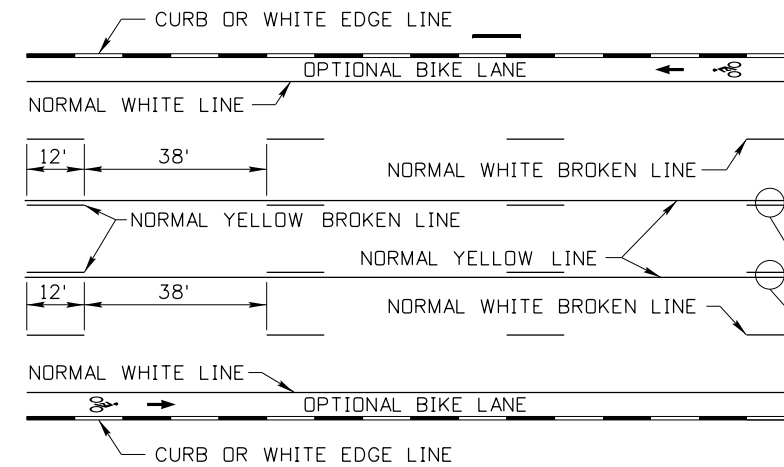
PLACEMENT OF LANE LINE MARKINGS ON TWO-WAY ROADWAY



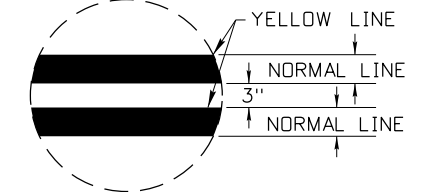
PAINT TRUCK SETUP



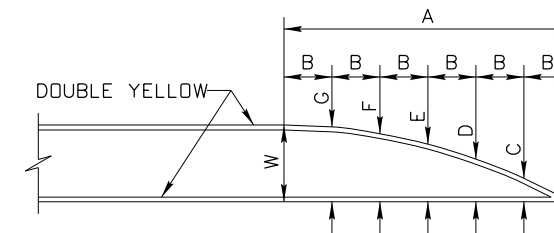
TWO-WAY ROADWAY MARKINGS



FIVE LANE ROADWAY MARKINGS



DETAIL "A"



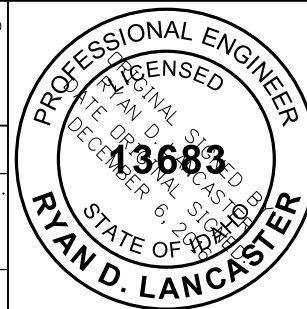
W	A	B	C	D	E	F	G
10.0'	60.0'	10.0'	3.1'	5.6'	7.5'	8.9'	9.7'
12.0'	60.0'	10.0'	3.7'	6.7'	9.0'	10.7'	11.7'
14.0'	60.0'	10.0'	4.3'	7.8'	10.5'	12.4'	13.6'
16.0'	60.0'	10.0'	4.9'	8.9'	12.0'	14.2'	15.6'

OFFSET NOSE (OPTIONAL)

NOTES:

1. NORMAL LINES ARE 4" TO 6" WIDE.
2. WIDE LINES ARE TO BE AT LEAST TWICE THE WIDTH OF A NORMAL LINE.
3. WHEN EDGE LINES ARE USED ON HIGHWAYS LESS THAN 24' WIDE, PLACE THE EDGE LINE 6" FROM THE EDGE OF PAVEMENT.
4. DRAWING NOT TO SCALE.

ORIGINAL STORED AT: ITD, Headquarters 3311 West State Boise, Idaho



REVISIONS							
NO.	DATE	BY	NO.	DATE	BY	NO.	DATE

SCALES SHOWN ARE FOR 11" X 17" PRINTS ONLY  
 CADD FILE NAME: 630-1\_1216.dgn  
 DRAWING DATE: DECEMBER, 2016

**IDAHO TRANSPORTATION DEPARTMENT**  
 BOISE IDAHO

ORIGINAL SIGNED BY: TED MASON  
 DESIGN/TRAFFIC SERVICES ENGINEER

STANDARD DRAWING  
**PAVEMENT MARKINGS FOR ARTERIAL AND COLLECTOR ROADWAYS**

**English**  
 STANDARD DRAWING NO. 630-1  
 SHEET 1 OF 1