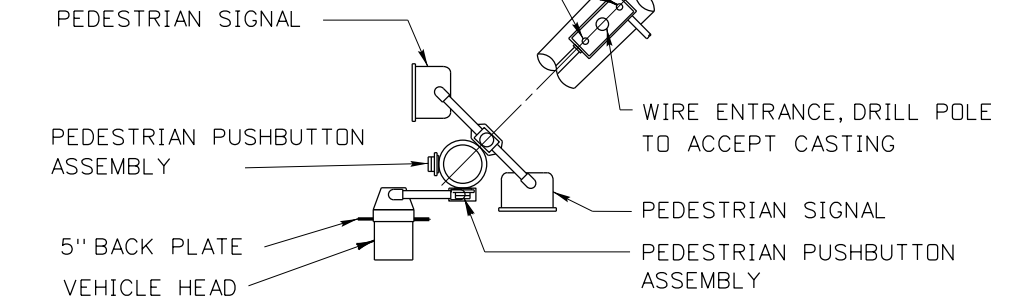
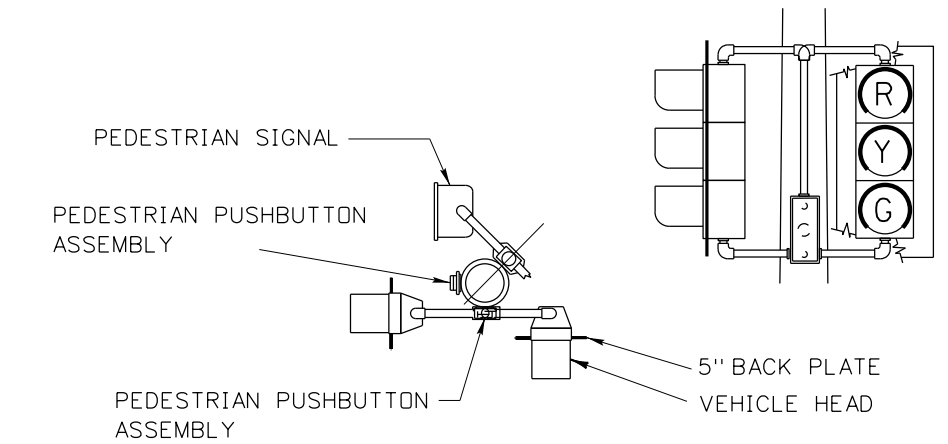


DRILL AND TAP POLE FOR 1/2" CAP SCREWS TO FIT TERMINAL COMPARTMENT MOUNTING BRACKET. (TYPICAL POLE MOUNTING)



VIEW A-A



POLE MOUNTED HEADS FOR DUAL VEHICLE SIGNAL HEAD INSTALLATION

PEDESTRIAN PUSHBUTTON MOUNTING

1. PEDESTRIAN PUSHBUTTON ASSEMBLIES ARE TO BE MOUNTED AS PER MANUFACTURER'S INSTRUCTIONS.

NOTES:

1. THIS DRAWING SHOWS TYPICAL INSTALLATION DETAILS ONLY. SEE PLAN SHEETS FOR QUANTITY OF SIGNAL AND LIGHTING COMPONENTS TO BE INSTALLED.
2. ORIENTATION OF SIGNAL COMPONENTS SHALL BE AS SHOWN UNLESS OTHERWISE SPECIFIED ON THE PLAN SHEETS.
3. SEE STANDARD DRAWING 656-3 FOR FOUNDATION DETAILS.
4. ALL SIGNAL COMPONENTS SHALL BE LEVELED AFTER THE POLE HAS BEEN PLUMBED.
5. SPECIFIC LOCATION OF EACH POLE INSTALLATION SHALL BE AS INDICATED ON THE PROJECT PLAN SHEETS.

ORIGINAL STORED AT: ITD, Headquarters 3311 West State Boise, Idaho

REVISIONS								
NO.	DATE	BY	NO.	DATE	BY	NO.	DATE	BY
1	12-94	HEB	6	04-14	HEB			
2	12-01	NQB						
3	07-05	HEB						
4	08-06	HEB						
5	07-10	HEB						

SCALES SHOWN ARE FOR 11" X 17" PRINTS ONLY

CADD FILE NAME: 656-1\_0414.dgn

DRAWING DATE: AUGUST, 1994

**IDAHO TRANSPORTATION DEPARTMENT**



BOISE IDAHO

ORIGINAL SIGNED BY: CARL D. MAIN  
DESIGN/TRAFFIC SERVICES ENGINEER

STANDARD DRAWING

**MAST ARM TRAFFIC SIGNAL POLES**

REQUIRES STD. DWG. 656-15

**English**

STANDARD DRAWING NO. **656-1**

SHEET 1 OF 1