

4" TO 6" STUBS AND INSULATED BONDING BUSHING REQ'D ON METALLIC CONDUIT

SEE SCHEDULE FOR HOOP AND VERTICAL REINFORCING STEEL

ANCHOR BOLT SIZES AND LOCATION PER MANUFACTURERS' SPECIFICATIONS

NOTE: GROUT AFTER POLE HAS BEEN PLUMBED. LEAVE CAVITY UNDER CENTER OF BASE PLATE.

OPTIONAL FINISH LINE 1/2" PLASTIC DRAIN PIPE REQUIRED

6" CLEARANCE

12" TYP.

6" MIN.

RIGID CONDUIT (SEE PLANS FOR SIZE, TYPE, AND QUANTITY).

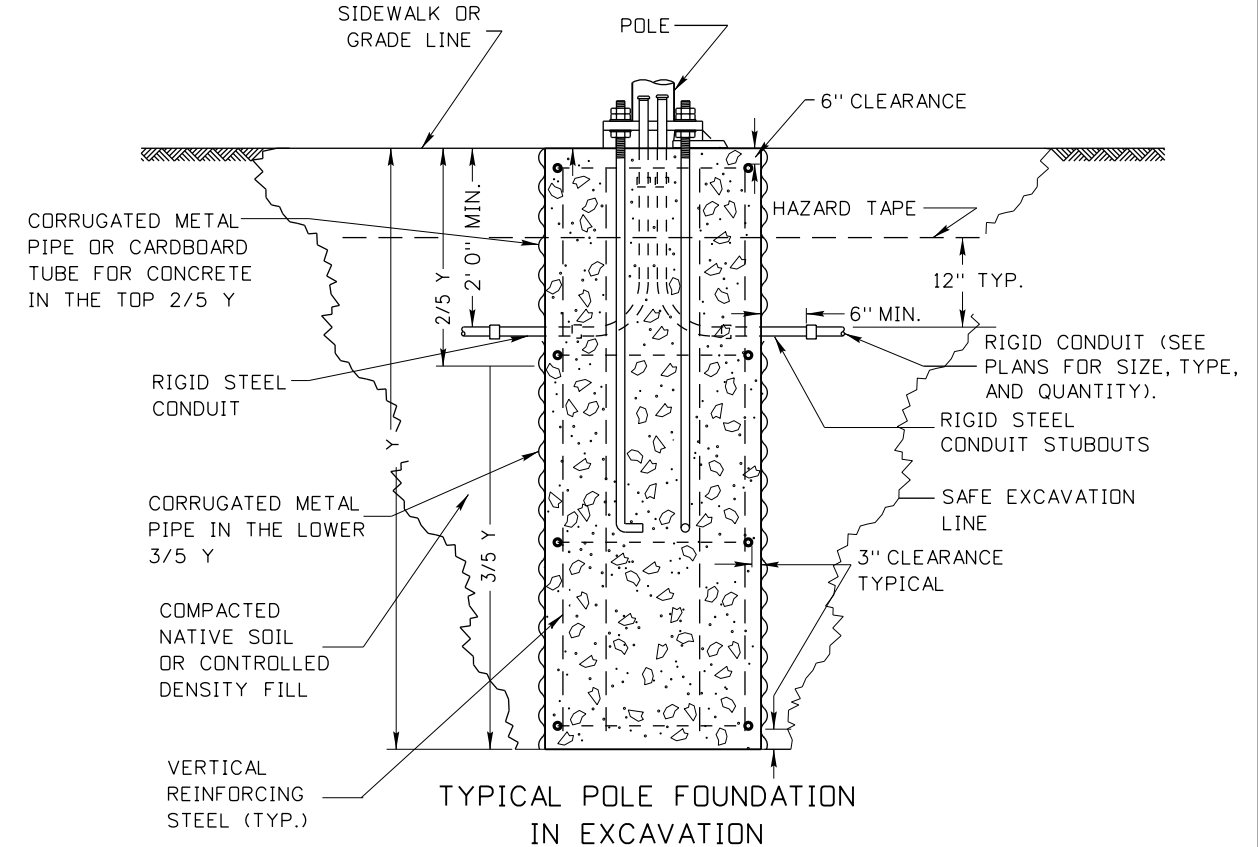
3" CLEARANCE TYPICAL

TYPICAL POLE FOUNDATION IN DRILLED HOLE

THE LOWER 3/5 OF THE FOUNDATION TO BE PLACED AGAINST UNDISTURBED SOIL UNLESS OTHERWISE APPROVED BY THE ENGINEER. THE UPPER 2/5 OF THE FOUNDATION MAY BE FORMED AS NEEDED.

GENERAL NOTES:

1. THE FOUNDATIONS SHALL BE LOCATED AS INDICATED ON THE PROJECT PLAN SHEETS.
2. FOUNDATION REINFORCING STEEL CAGES MAY BE WELDED IF THE REINFORCING STEEL CONFORMS TO AASHTO M 31 AND ALL WELDING CONFORMS TO ANSI/AWS D1.4 (STRUCTURAL WELDING CODE - REINFORCING STEEL).
3. REINFORCING STEEL IN POLE FOUNDATIONS SHALL BE 60 KSI STEEL.
4. STEEL TEMPLATE REQUIRED FOR ANCHOR BOLT PLACEMENT.
5. SPARE STUBOUTS WHEN SHOWN ON PLAN SHEETS SHALL BE TERMINATED WITH A STEEL COUPLING AND FOAM PLUG AT BOTH ENDS.
6. CLASS 40A CONCRETE SHALL BE USED IN POLE FOUNDATIONS.
7. FOUNDATION CONCRETE SHALL ACHIEVE 100% STRENGTH AND CURE FOR A MINIMUM OF 7 DAYS BEFORE ANY LOADING IS APPLIED.
8. FILLER JOINT MATERIAL WILL BE PLACED AROUND POLE FOUNDATION WHEN POLE FOUNDATION IS IN CONTACT WITH SIDEWALK.
9. ELEVATION OF TOP OF POLE FOUNDATION SHALL MATCH THE ADJACENT PAVEMENT EDGE OR SIDEWALK ELEVATION.
10. ANCHOR BASE ASSEMBLIES SHALL BE INSTALLED AND TIGHTENED IN ACCORDANCE WITH SUBSECTION 619.03 OF THE ITD STANDARD SPECIFICATIONS FOR HIGHWAY CONSTRUCTION AND THE SUPPLEMENTAL SPECIFICATIONS.
11. DRAWING NOT TO SCALE.



EXCAVATION NOTES:

1. IF CORRUGATED METAL PIPE IS USED UP TO SIDEWALK OR GRADE LINE, CUT OUT HOLE FOR THE CONDUITS WILL BE EQUAL TO THE DIAMETER OF CONDUIT OR CONDUITS PLUS ONE INCH.
2. WHEN NATIVE SOIL IS USED FOR BACKFILL, IT SHALL BE COMPACTED IN ACCORDANCE WITH SUBSECTION 210.03 OF THE IDAHO STANDARD SPECIFICATIONS FOR HIGHWAY CONSTRUCTION AND SUPPLEMENTAL SPECIFICATIONS.
3. IF CONTROL DENSITY FILL IS USED FOR BACK FILL, IT SHALL HAVE A COMPRESSIVE STRENGTH OF 100 PSI TO 300 PSI.
4. DRAWING NOT TO SCALE.

POLE FOUNDATION SCHEDULE												
POLE TYPE	MT.HT.	MASTARM LENGTH	FOUNDATION TYPE	X	Y	REINFORCING STEEL HOOPS			VERTICAL REINFORCING STEEL		CUBIC YARDS CONCRETE	
						QTY.	SIZE	LIN.FT.	QTY.	SIZE		LIN.FT.
PEDESTRIAN SIGNAL POLE	-	-	A	2'-0"	5'-0"	4	#4	20'-10"	6	#4	25'-6"	.6
SIGNAL POLE	-	20' - 45'	D	3'-0"	9'-0"	5	#4	41'-10"	8	#6	66'-0"	2.4
PEDESTRIAN PUSHBUTTON POLE	4'-0"	-	E	1'-6"	2'-6"	-	-	-	-	-	-	0.2
DUAL MAST ARM SIGNAL POLE	-	ALL	F	3'-0"	12'-0"	8	#5	66'-10"	12	#6	135'-0"	3.1
SIGNAL POLE	-	50' - 55'	F	3'-0"	12'-0"	8	#5	66'-10"	12	#6	135'-0"	3.1

ORIGINAL STORED AT: ITD, Headquarters 3311 West State Boise, Idaho

ORIGINAL SIGNED BY: TRJ BUJ DATE ORIGINAL SIGNED: MAY 1, 2017

REVISIONS								
NO.	DATE	BY	NO.	DATE	BY	NO.	DATE	BY

SCALES SHOWN ARE FOR 11" X 17" PRINTS ONLY  
 CADD FILE NAME: 656-3\_0517.dgn  
 DRAWING DATE: MAY, 2017

**IDAHO TRANSPORTATION DEPARTMENT**

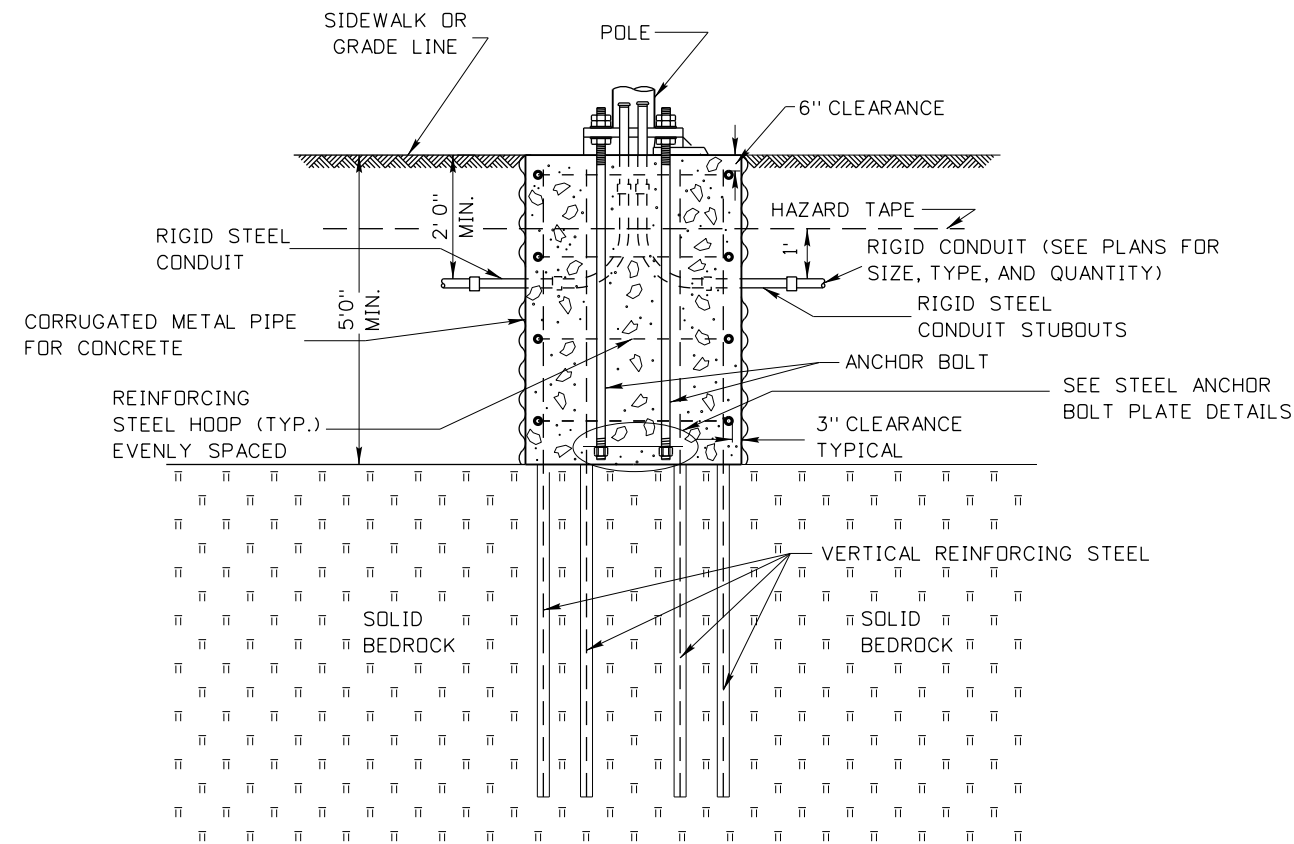


BOISE IDAHO

ORIGINAL SIGNED BY: KEVIN SABLAN  
 DESIGN/TRAFFIC SERVICES ENGINEER

STANDARD DRAWING  
**MASTARM SIGNAL POLE AND PEDESTRIAN POLE FOUNDATION DETAILS**  
 REQUIRES SHEET 2 OF 2

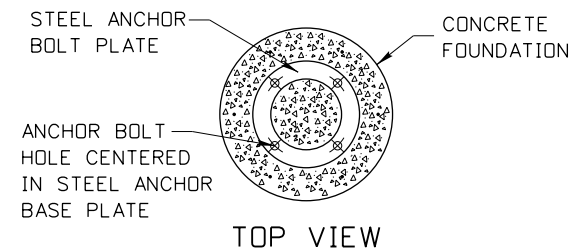
**English**  
 STANDARD DRAWING NO. **656-3**  
 SHEET 1 OF 2



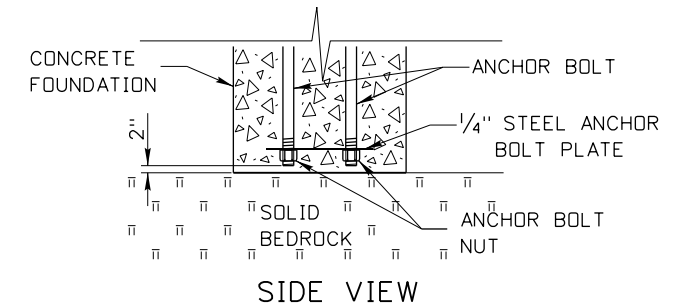
TYPICAL POLE FOUNDATION  
IN SOLID BEDROCK

SOLID BEDROCK NOTES:

1. IF DEPTH TO BEDROCK IS LESS THAN 5', NOTIFY THE ENGINEER AND REDESIGN OF THE FOUNDATION MAY BE REQUIRED
2. FOUR REINFORCING STEEL HOOPS TO BE EVENLY SPACED ARE REQUIRED.
3. SOCKET ALL VERTICAL REINFORCING STEEL FULL LENGTH AS SHOWN IN POLE FOUNDATION SCHEDULE ON SHEET 1 IN BEDROCK. DIAMETERS OF DRILLED HOLES FOR VERTICAL REINFORCING STEEL SHALL BE AT LEAST 2 INCHES. FILL DRILLED HOLES WITH GROUT, 705.02, TYPE B, CLASS 1.
4. EXCAVATION NOTES ON SHEET 1 APPLY TO THIS APPLICATION.
5. DRAWING NOT TO SCALE.



ANCHOR BOLT PLATE SCHEDULE		
BOLT CIRCLE	OUTSIDE DIAMETER	INSIDE DIAMETER
17 1/2"	21 1/4"	13 3/4"
18 1/2"	22 1/4"	14 3/4"
22"	26 1/4"	17 3/4"



STEEL ANCHOR BOLT PLATE DETAILS

SEE STANDARD DRAWING 656-3 SHEET 1 FOR DETAILS

ORIGINAL STORED  
AT: ITD,  
Headquarters  
3311 West State  
Boise, Idaho

ORIGINAL SIGNED BY:  
TRI BUJ  
DATE ORIGINAL SIGNED:  
MAY 1, 2017

REVISIONS								
NO.	DATE	BY	NO.	DATE	BY	NO.	DATE	BY

SCALES SHOWN  
ARE FOR 11" X 17"  
PRINTS ONLY

CADD FILE NAME:  
656-3\_0517.dgn

DRAWING DATE:  
MAY, 2017

**IDAHO  
TRANSPORTATION  
DEPARTMENT**



BOISE IDAHO

ORIGINAL SIGNED BY: KEVIN SABLAN  
DESIGN/TRAFFIC SERVICES ENGINEER

STANDARD DRAWING  
**MASTARM SIGNAL POLE  
AND PEDESTRIAN  
POLE FOUNDATION DETAILS**  
REQUIRES SHEET 1 OF 2

**English**  
STANDARD DRAWING NO.  
**656-3**  
SHEET 2 OF 2