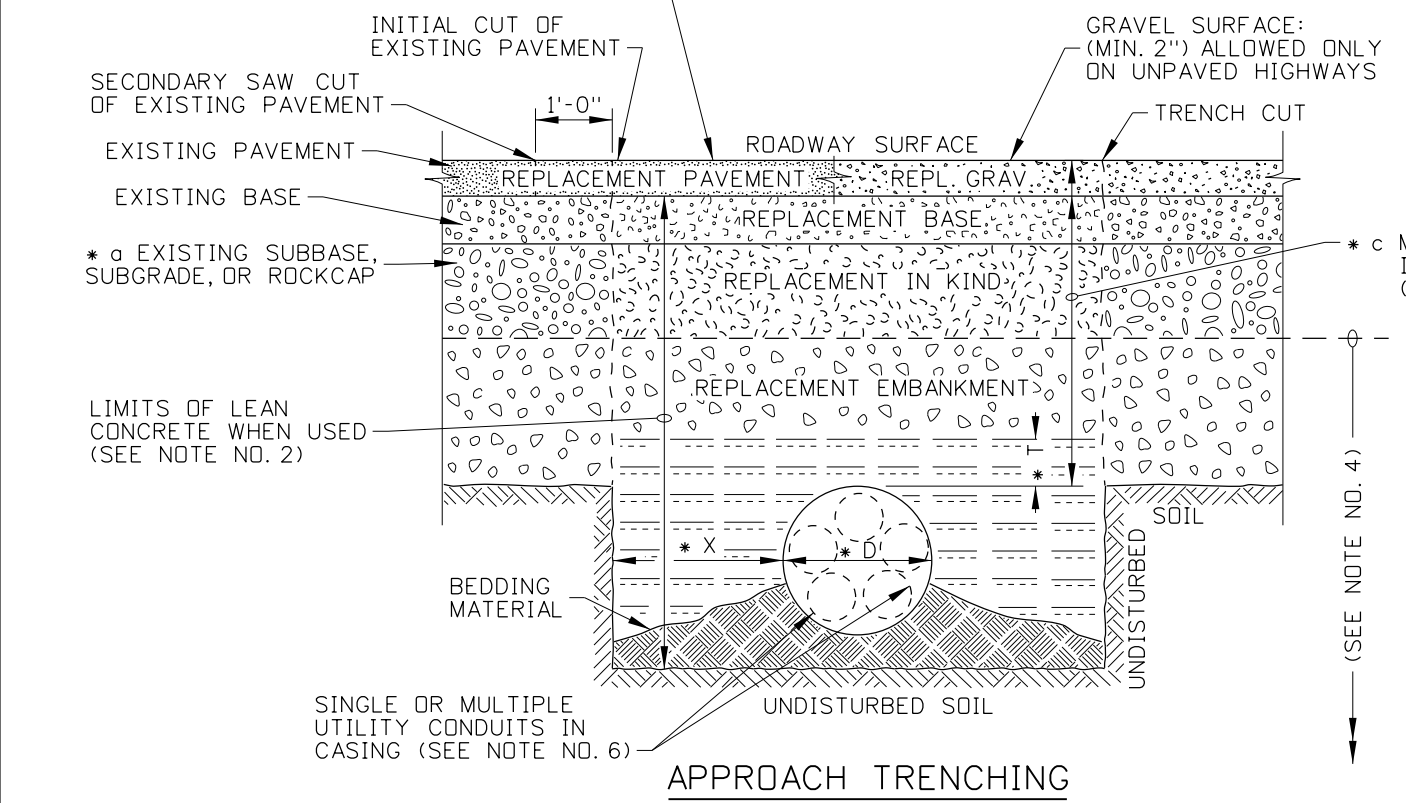


ASPHALT PAVEMENT SURFACE:
 REQUIRED ON ALL RURAL PRIVATE & COMMERCIAL
 APPROACHES. PAVED TO A MINIMUM DEPTH OF
 3". ALL PUBLIC APPROACH PAVING & BALLAST
 DEPTHS SHALL MEET LOCAL HIGHWAY DISTRICT
 OR CITY REQUIREMENTS (SEE NOTE NO. 5).



- NOTES**
1. THE DESCRIPTION OF CONDUIT SHALL INCLUDE CULVERTS, PIPES, AND CASINGS USED FOR THE PURPOSE OF CONVEYING WATER, PETROLEUM PRODUCTS, AND UNDERGROUND UTILITIES. THE METHOD OF INSTALLATION (JACKING, DRIVING, OR BORING AND TRENCHING) SHALL MEET THE REQUIREMENTS OF THE "UTILITIES ACCOMMODATIONS", APPENDIX B, OF THE ITD DESIGN MANUAL AND THE REQUIREMENTS OF STATE, COUNTY OR OTHER LOCAL AUTHORITY.
 2. THE USE OF LEAN CONCRETE AS BACKFILL MATERIAL IN OPEN TRENCH CROSSINGS ON ROADWAYS AND APPROACHES MAY BE REQUIRED BY THE PERMITTING ENTITY. LEAN CONCRETE FOR THE REPLACEMENT OF BASE, SUBBASE, AND EMBANKMENT SHALL REQUIRE AN APPROVED MIX DESIGN.
 3. WHEN REPLACEMENT MATERIAL FOR THE BASE, SUBBASE, AND/OR EMBANKMENT IS NOT LEAN CONCRETE, THEN THE REPLACEMENT MATERIALS AND COMPACTION OF THE BASE COURSE(S) SHALL BE IN ACCORDANCE WITH SECTION 303 - AGGREGATE BASE AND THE SUBBASE SHALL BE IN ACCORDANCE WITH SECTION 301 - GRANULAR SUBBASE OF THE ITD STANDARD SPECIFICATIONS FOR HIGHWAY CONSTRUCTION (NOTE: WHEN A ROCKCAP IS ENCOUNTERED THE REPLACEMENT MATERIAL SHALL BE IN KIND OR AS DIRECTED BY THE ENGINEER).
 4. ALL CONDUIT PLACEMENT BY OPEN TRENCHING SHALL MEET THE REQUIREMENTS OF STANDARD DRAWING D-12 - CONDUIT INSTALLATION AND SECTION 210 - STRUCTURE EXCAVATION AND COMPACTING BACKFILL OF THE ITD STANDARD SPECIFICATIONS FOR HIGHWAY CONSTRUCTION.
 5. WHEN THE PAVEMENT IS DISTURBED ON ROADWAYS AND/OR RURAL PRIVATE, COMMERCIAL, AND PUBLIC APPROACHES BY JACKING, DRIVING, BORING OR TRENCHING THE PAVEMENT SHALL BE RESTORED TO THE ORIGINAL DEPTH AND SMOOTHNESS.
 6. UTILITY CONDUITS SHALL CONTAIN ADDITIONAL CARRIERS WHENEVER FEASIBLE TO ALLOW ACCESS FOR FUTURE USE. WHEN MULTIPLE CARRIERS ARE PLACED IN TRENCH WITHOUT CASING, THE CARRIERS SHALL BE SEPARATED BY 3" OF SAND OR SOIL CUSHION.
 7. THE MINIMUM DEPTH COVER FOR CULVERTS CONVEYING WATER IS 2'-0". PIPELINES CARRYING LIQUID OR GAS PETROLEUM SHALL HAVE A MINIMUM DEPTH COVER AT ANY POINT UNDER THE ROADWAY PRISM OF 4'-0". UTILITIES FOR COMMUNICATION SHALL CONFORM TO THE 2'-0" MINIMUM DEPTH COVER (NOTE: MINIMUM DEPTH IS FROM UNDER PAVEMENT).
 8. NOT TO SCALE.

SUB-NOTES	
* o	SOME ROADWAYS MAY HAVE A GRANULAR SUBBASE, OR ROCKCAP OR EMBANKMENT WITH NO SUBBASE. (SEE NOTE NOS. 2 & 3).
* b	CONDUIT/CULVERT SIZE IS MIN. 1'-0" (SEE NOTE NO. 1).
* c	SOME UTILITIES REQUIRE GREATER DEPTH. (SEE NOTE NOS. 1 & 7).
SEE STANDARD DRAWING D-12 FOR DEFINITIONS OF: * D, * T, & * X	

REVISIONS							
NO.	DATE	BY	NO.	DATE	BY	NO.	DATE
1	11-01	MSM					
2	01-05	MSM					

SCALES SHOWN
 ARE FOR 11" X 17"
 PRINTS ONLY

CADD FILE NAME:
 d13_0105.dgn

DRAWING DATE:
 FEBRUARY, 2000

**IDAHO
 TRANSPORTATION
 DEPARTMENT**



BOISE IDAHO

ORIGINAL SIGNED BY: LOREN THOMAS
 ASSISTANT CHIEF ENGINEER (DEVELOPMENT)

ORIGINAL SIGNED BY: STEVEN HUTCHINSON
 CHIEF ENGINEER

STANDARD DRAWING
**CONDUIT INSTALLATION
 FOR EXISTING
 ROADWAYS & APPROACHES**
 REQUIRES STD. DWG. D-12

English
 STANDARD DRAWING NO.
D-13
 SHEET 1 OF 1

ORIGINAL STORED
 AT: ITD,
 Headquarters
 3311 West State
 Boise, Idaho

ORIGINAL SIGNED BY:
 MILE DRD L. MILLER
 DATE ORIGINAL SIGNED:
 JANUARY 5, 2005