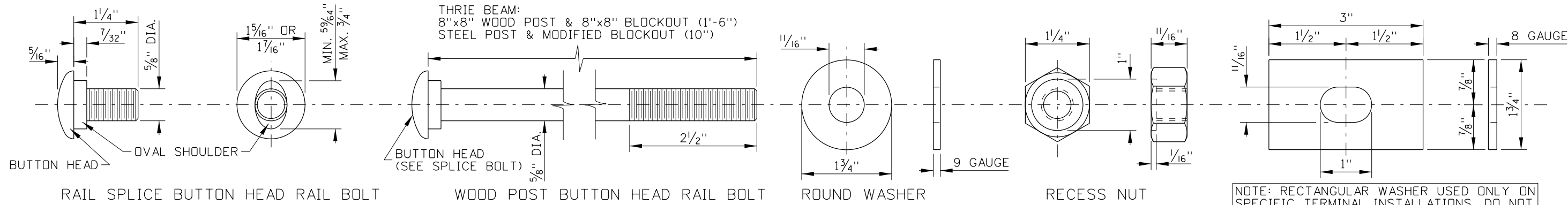


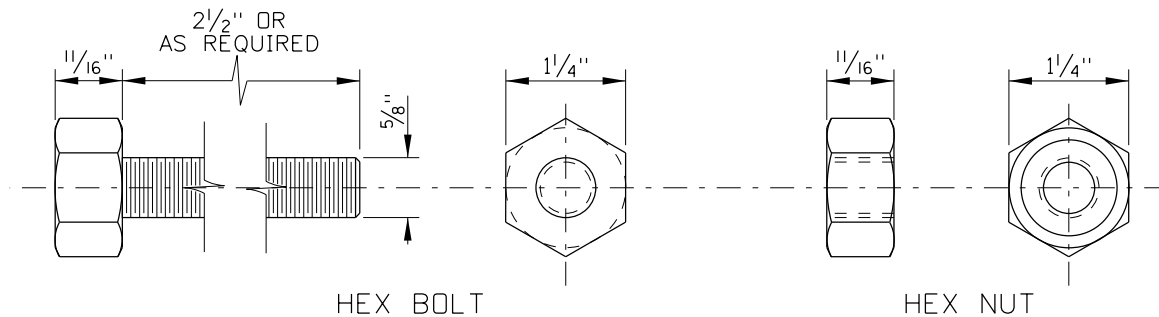
W-BEAM:
 6"x8" WOOD POST & 6"x8" BLOCKOUT (1'-6")
 8"x8" WOOD POST & 8"x8" BLOCKOUT (1'-6")
 STEEL POST & MODIFIED BLOCKOUT (10")

THRIE BEAM:
 8"x8" WOOD POST & 8"x8" BLOCKOUT (1'-6")
 STEEL POST & MODIFIED BLOCKOUT (10")



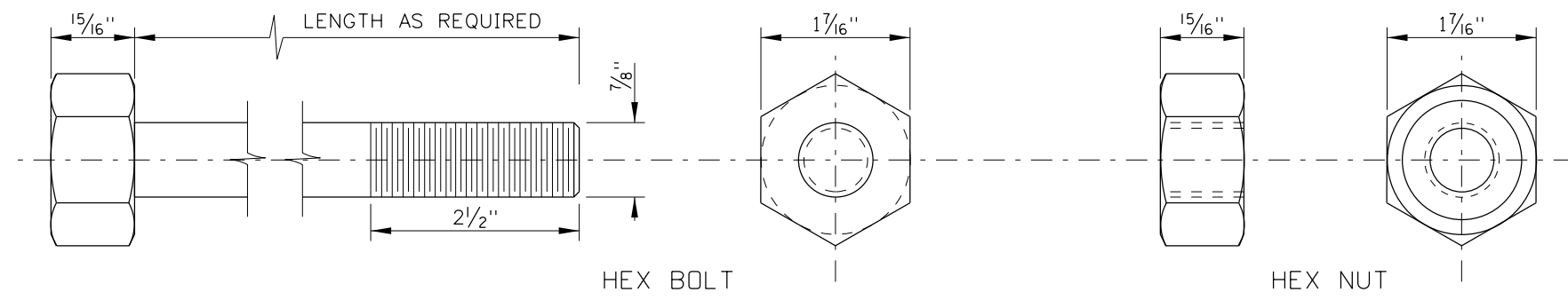
NOTE: RECTANGULAR WASHER USED ONLY ON SPECIFIC TERMINAL INSTALLATIONS. DO NOT USE ON REGULAR GUARDRAIL INSTALLATIONS

BOLTING HARDWARE



STEEL POST BOLTING HARDWARE

ITEM NO. FBX16a



HIGH STRENGTH BOLTING HARDWARE

ITEM NO. FBX16b-36b

NOTES

1. ALL GUARDRAIL BOLTING HARDWARE AND ACCESSORIES SHALL CONFORM TO THE SPECIFICATIONS AS INDICATED IN THE AASHTO "A GUIDE TO STANDARDIZED HIGHWAY BARRIER HARDWARE".
2. THE BOLTING HARDWARE SHOWN IS USED FOR BOTH W-BEAM AND THRIE BEAM INSTALLATIONS.
3. NOT TO SCALE.

REVISIONS								
NO.	DATE	BY	NO.	DATE	BY	NO.	DATE	BY

SCALES SHOWN ARE FOR 11" X 17" PRINTS ONLY
 CADD FILE NAME: g1a4_0406.dgn
 DRAWING DATE: APRIL, 2006

IDAHO TRANSPORTATION DEPARTMENT

BOISE IDAHO

ORIGINAL SIGNED BY: LOREN THOMAS
 ASSISTANT CHIEF ENGINEER (DEVELOPMENT)
 ORIGINAL SIGNED BY: STEVEN HUTCHINSON
 CHIEF ENGINEER

STANDARD DRAWING
GUARDRAIL BOLTING HARDWARE FOR W-BEAM & THRIE BEAM

English
 STANDARD DRAWING NO.
G-1-A-4
 SHEET 1 OF 1

ORIGINAL STORED AT: ITD, Headquarters 3311 West State Boise, Idaho

ORIGINAL SIGNED BY: MILDRED L. MILLER
 DATE ORIGINAL SIGNED: APRIL 26, 2006