

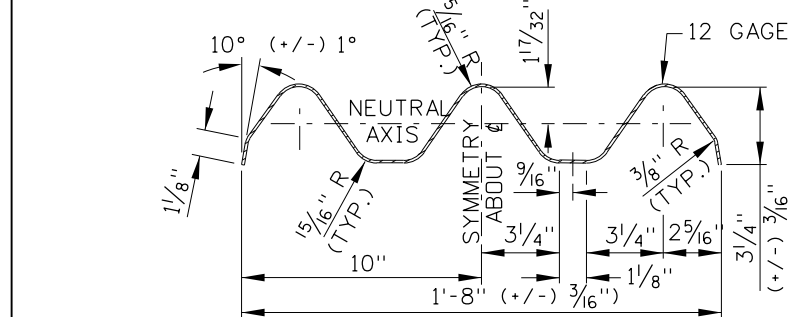
NOTE: THE CENTER POST OF THE SYMMETRICAL TRANSITION ELEMENT REQUIRES A MODIFIED BLOCKOUT WHICH IS DETAILED ON STD. DWG. G-1-E

NOTE: THE CENTER POST OF THE ASYMMETRICAL TRANSITION ELEMENT REQUIRES THE TOP TO BE TRIMMED TO MATCH THE RAIL TOP

SYMMETRICAL TRANSITION ELEMENT
(ITEM NO. RWT01a-b)

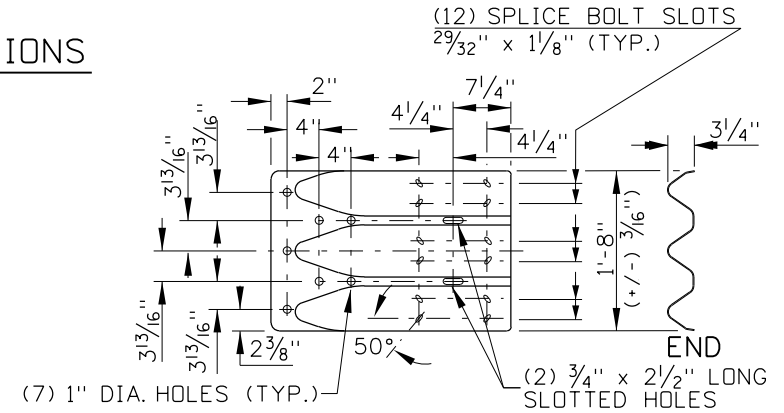
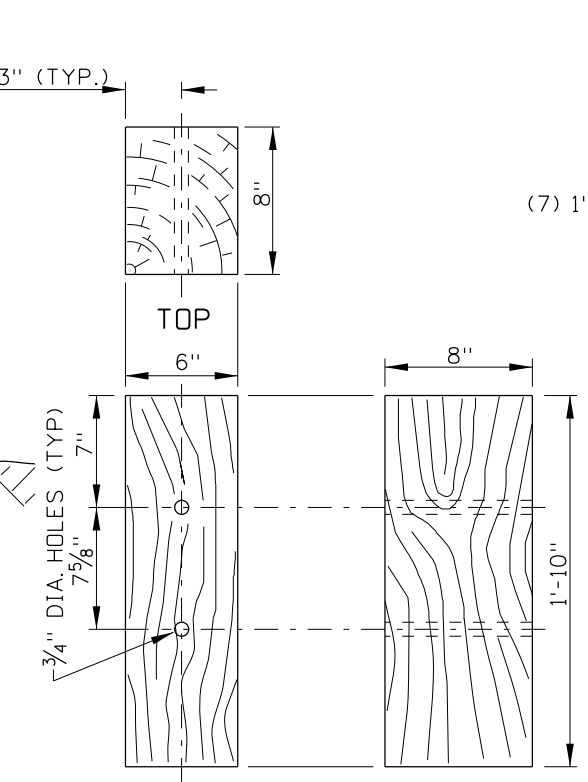
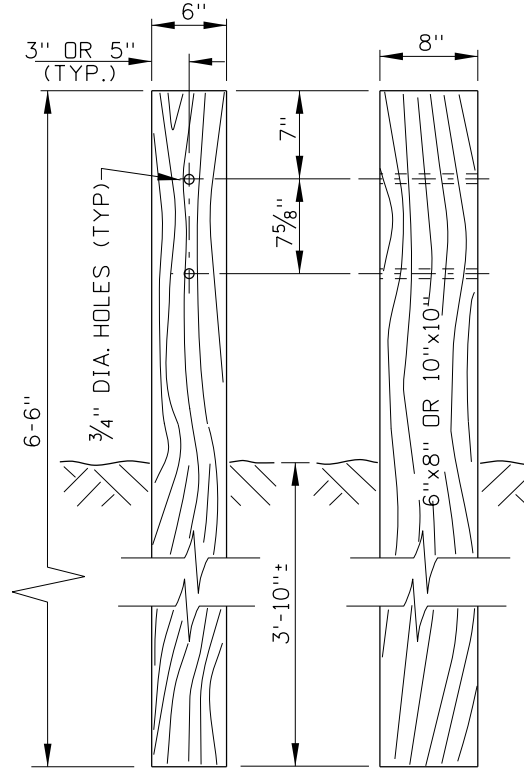
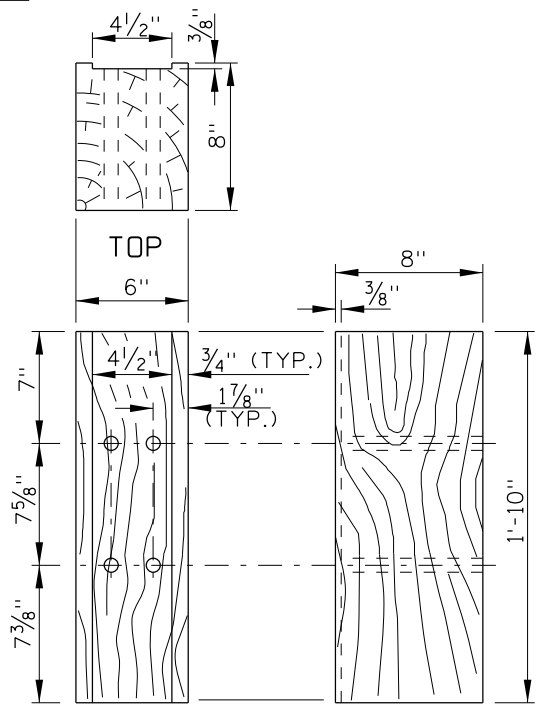
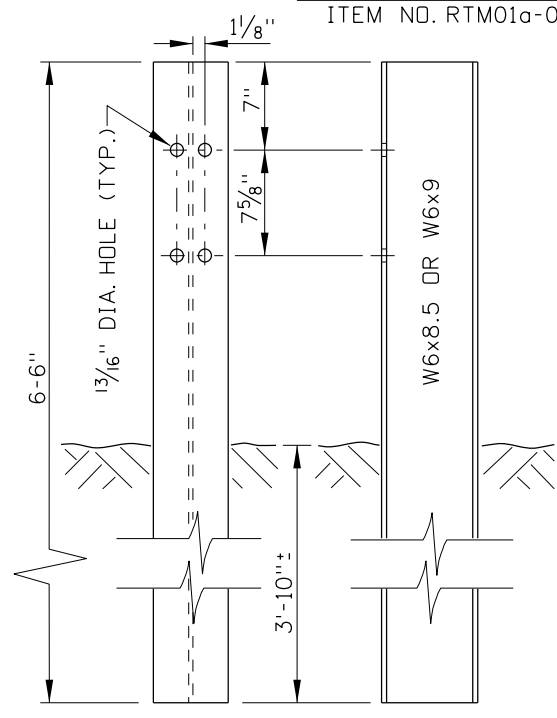
ASYMMETRICAL TRANSITION ELEMENT
(SEE NOTE NO. 7)

THRIE BEAM TO W-BEAM TRANSITION SECTIONS



SHAPE TO FIT, ROUND EDGE
MIN. 1" WIDTH FOR FOLD-OVER
VARY TO FILLET AS REQ'D.

SECTION B-B



REVISIONS							
NO.	DATE	BY	NO.	DATE	BY	NO.	DATE
1	05-07	MSM					
2	10-10	PLR					

SCALES SHOWN ARE FOR 11" X 17" PRINTS ONLY
CADD FILE NAME: g1a5_1010.dgn
DRAWING DATE: MAY, 2006

IDAHO TRANSPORTATION DEPARTMENT
BOISE IDAHO

ORIGINAL SIGNED BY: LOREN THOMAS
ASSISTANT CHIEF ENGINEER (DEVELOPMENT)
ORIGINAL SIGNED BY: TOM COLE
CHIEF ENGINEER

STANDARD DRAWING
THRIE BEAM GUARDRAIL
REQUIRES SHEET 2 OF 2

English
STANDARD DRAWING NO.
G-1-A-5
SHEET 1 OF 2

ORIGINAL STORED AT: ITD, Headquarters 3311 West State Boise, Idaho

ORIGINAL SIGNED BY: TED E. MASON
DATE ORIGINAL SIGNED: OCTOBER 26, 2010

