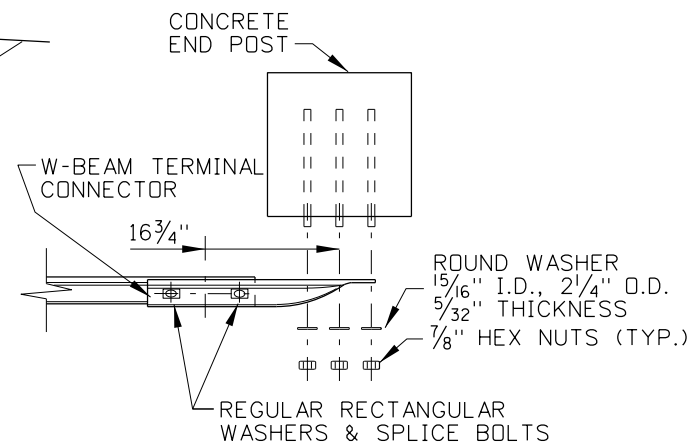
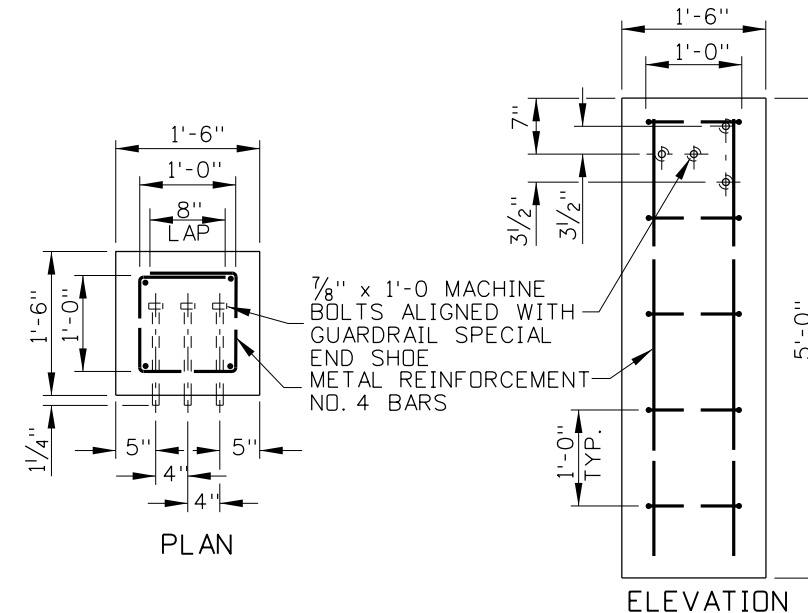


PERSPECTIVE VIEW
(SEE NOTE NO. 7)



POST CONNECTION DETAIL

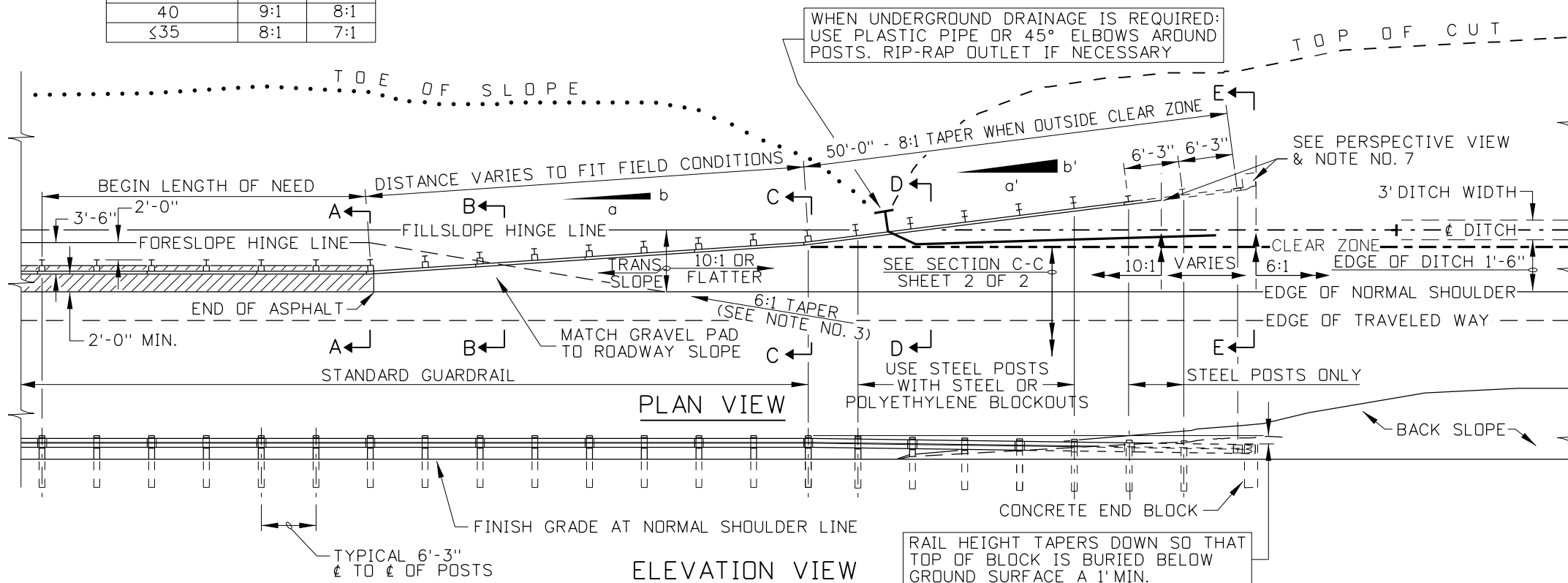


CONCRETE END POST

NOTES

- REFER TO STANDARD DRAWINGS G-1-A-1 THROUGH G-1-A-4 FOR INSTALLATION DETAILS, DETAILS OF GUARDRAIL, GUARDRAIL POSTS, POST BLOCKS, POST SPACING, AND GUARDRAIL BOLTING HARDWARE.
- CARRY THE GUARDRAIL AT THE INITIAL TAPER ($\alpha:b$) WHILE MAINTAINING THE CENTER OF THE RAIL, ALONG THE FACE OF RAIL, AT A HEIGHT OF 1'-11" FROM THE 10:1 ROADWAY FORESLOPE SURFACE. ONCE THE CLEAR ZONE IS TRAVERSED BEGIN THE SECONDARY TAPER ($\alpha':b'$) AND BEGIN TO LOWER THE RAIL SO THAT THE CONCRETE BLOCK WILL HAVE A MINIMUM SOIL COVER OF 1'.
- THE SURFACE BETWEEN THE FORESLOPE HINGE LINE AND THE FILL SLOPE HINGE LINE SHALL TRANSITION FROM THE TRAILING ROADWAY FORESLOPE TO A 10:1 OR FLATTER SLOPE.
- A SIDE DRAIN MUST BE INSTALLED WHERE THE DITCH CANNOT BE GRADED TO DRAIN OR HAS INADEQUATE CAPACITY. TO ACCOMMODATE A SIDE DRAIN PIPE THROUGH THE GUARDRAIL POSTS USE A BURIED FLEXIBLE PLASTIC PIPE OR 45° ELBOWS OF METAL OR CONCRETE PIPE.
- THE CONCRETE END BLOCKS MAY BE PRECAST OR CAST-IN-PLACE.
- THE PAYMENT FOR METAL TERMINAL SECTION TYPE 2 SHALL BE LIMITED TO THE CONCRETE END POST, METAL W-BEAM RUBRAIL, TERMINAL CONNECTOR, POST CONNECTION HARDWARE, AND ANY EXCAVATION AND/OR BACKFILL REQUIRED.
- TRANSITION THE FORESLOPE FROM 10:1 TO 6:1 BETWEEN THE BURIED RAIL PORTION AND THE CONCRETE END BLOCK. WHEN THE DESTINATION FORESLOPE IS LESS THAN 6:1 CONTINUE THE TRANSITION FORESLOPE PAST THE CONCRETE END BLOCK.
- THE PAYMENT FOR METAL TERMINAL SECTION TYPE 2-A SHALL BE LIMITED TO THE CONCRETE END BLOCK, METAL W-BEAM RUBRAIL, TERMINAL END CONNECTOR, POST CONNECTION HARDWARE, AND ANY EXCAVATION AND/OR BACKFILL REQUIRED.
- NOT TO SCALE.

TABLE OF MAXIMUM TAPERS		
DESIGN SPEED (mph)	TAPERS	
	$\alpha:b$	$\alpha':b'$
75	16:1	8:1
70	15:1	8:1
65	14:1	8:1
60	13:1	8:1
55	12:1	8:1
50	11:1	8:1
45	10:1	8:1
40	9:1	8:1
≤35	8:1	7:1



PLAN VIEW

ELEVATION VIEW

REVISIONS							
NO.	DATE	BY	NO.	DATE	BY	NO.	DATE
1	02-96	MSM	5	10-04	MSM		
2	08-00	MSM	6	04-06	MSM		
3	06-01	MSM	7	06-07	MSM		
4	07-03	MSM	8	10-10	PLR		
5	10-03	MSM					

SCALES SHOWN ARE FOR 11" X 17" PRINTS ONLY
CADD FILE NAME: g1c1_1210.dgn
DRAWING DATE: FEBRUARY, 1996

IDAHO TRANSPORTATION DEPARTMENT

BOISE IDAHO

ORIGINAL SIGNED BY: LOREN THOMAS
ASSISTANT CHIEF ENGINEER (DEVELOPMENT)

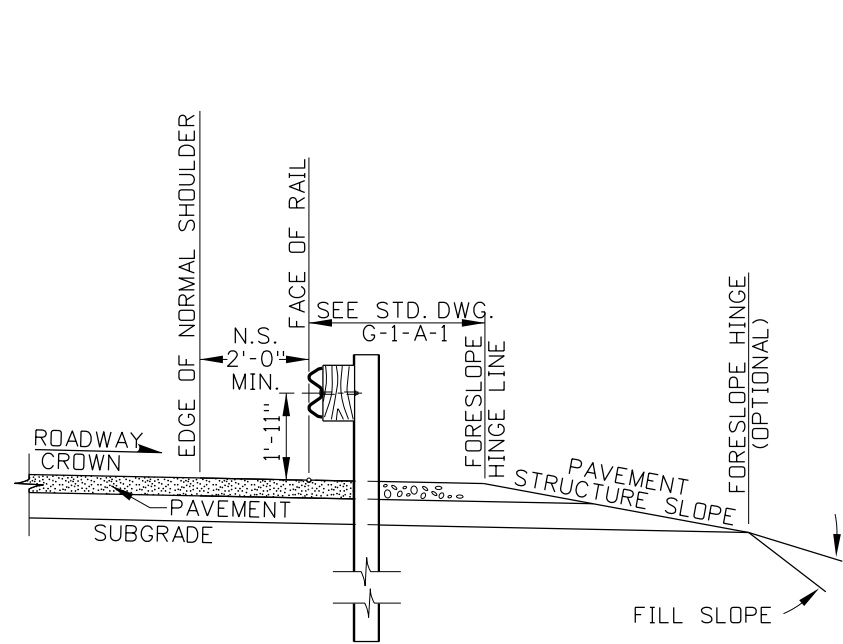
ORIGINAL SIGNED BY: TOM COLE
CHIEF ENGINEER

STANDARD DRAWING
GUARDRAIL TERMINAL TYPE 2-A, WITH 10:1 OR FLATTER FORESLOPE
REQUIRES SHEET 2 OF 2 & STD. DWGS. G-1-A-1 THRU G-1-A-4

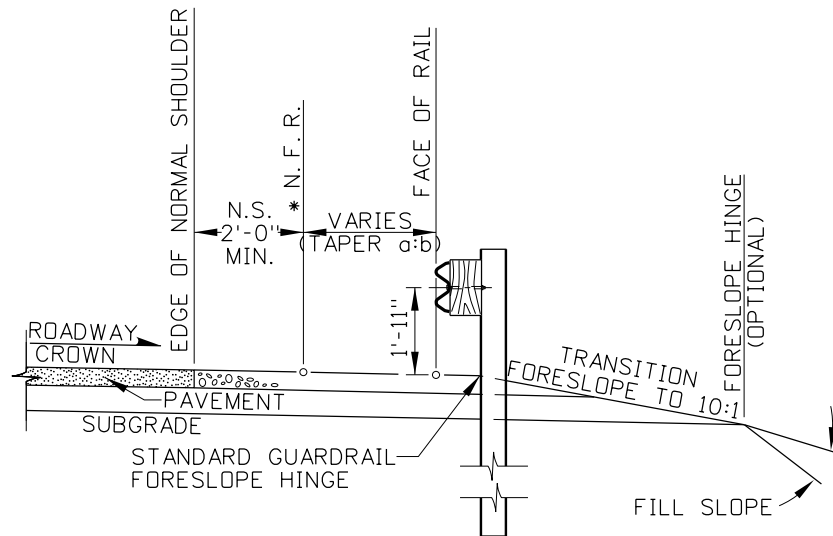
English
STANDARD DRAWING NO.
G-1-C-1
SHEET 1 OF 2

ORIGINAL STORED AT: ITD, Headquarters 3311 West State Boise, Idaho

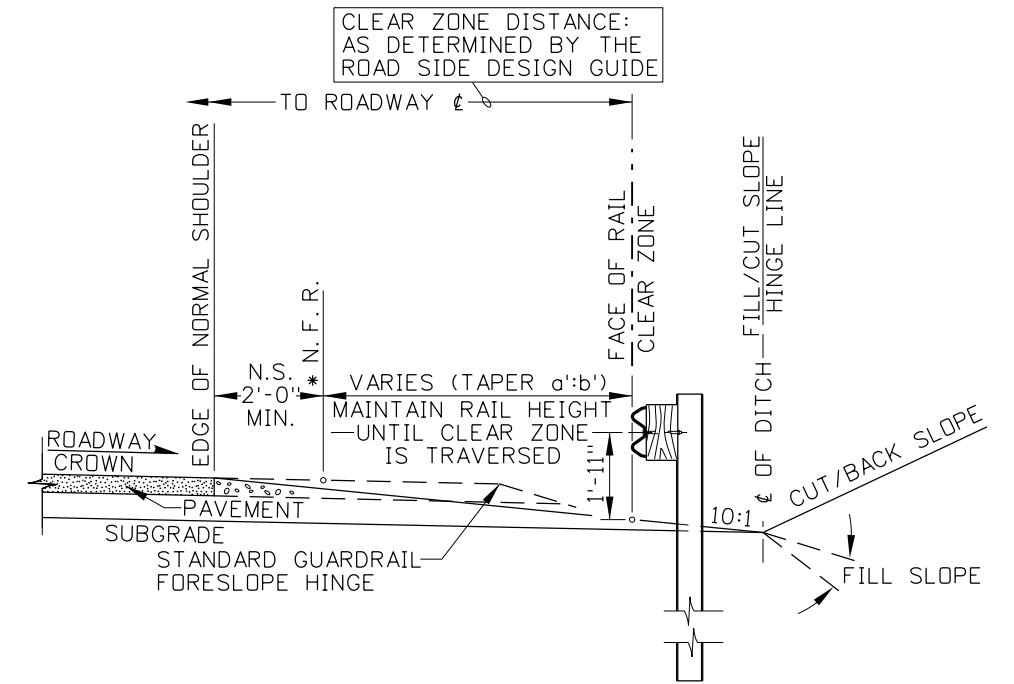
ORIGINAL SIGNED BY:
DATE: TED E. MASDN
DECEMBER 6, 2010



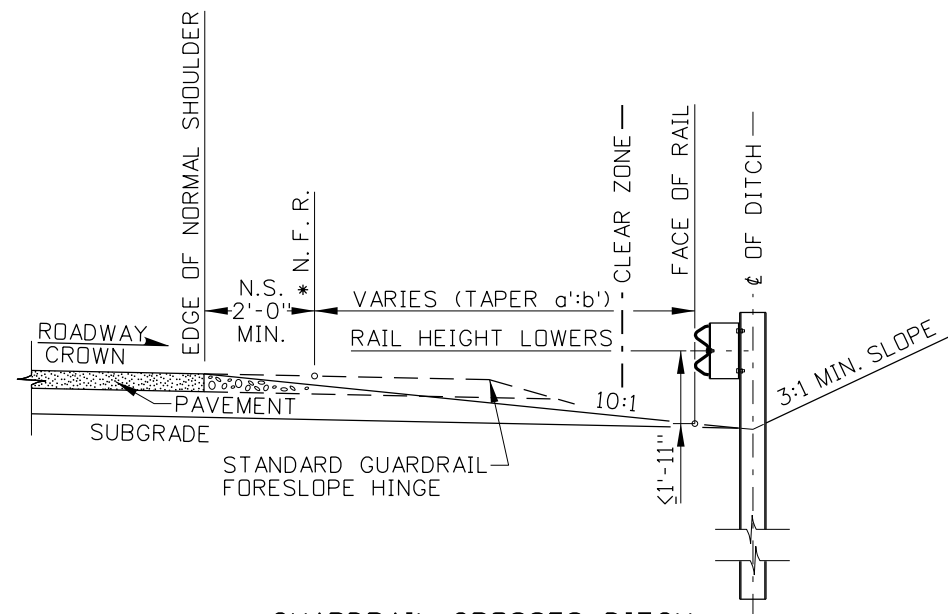
BEGINNING OF INITIAL TAPER
SECTION A-A



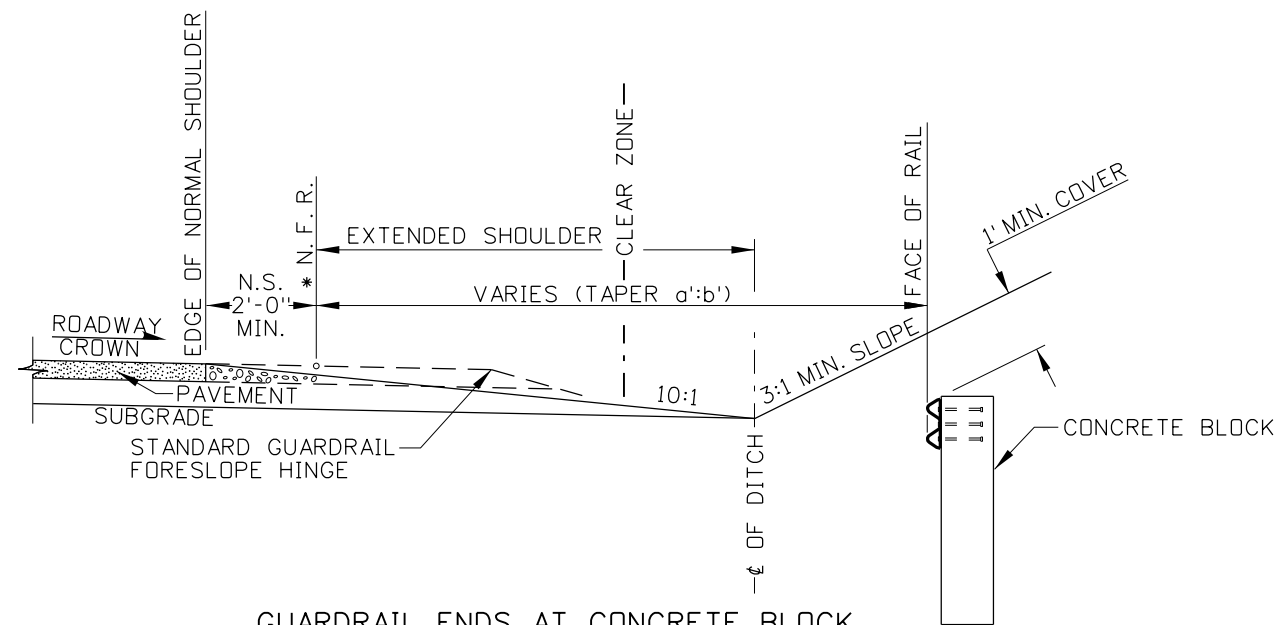
GUARDRAIL ENTERS TRANSITION FORESLOPE
SECTION B-B



BEGINNING OF SECOND TAPER AT CLEAR ZONE
SECTION C-C



GUARDRAIL CROSSES DITCH
SECTION D-D



GUARDRAIL ENDS AT CONCRETE BLOCK
SECTION E-E

SUBNOTES
 * a NORMAL FACE OF RAIL (N. F. R.)
 * b NORMAL SHOULDER (N. S.)

REVISIONS								
NO.	DATE	BY	NO.	DATE	BY	NO.	DATE	BY
1	02-96	MSM	5	10-04	MSM			
2	08-00	MSM	6	04-06	MSM			
3	06-01	MSM	7	06-07	MSM			
4	07-03	MSM	8	10-10	PLR			
5	10-03	MSM						

SCALES SHOWN ARE FOR 11" X 17" PRINTS ONLY
 CADD FILE NAME: g1c1_1210.dgn
 DRAWING DATE: FEBRUARY, 1996

IDAHO TRANSPORTATION DEPARTMENT



BOISE IDAHO

ORIGINAL SIGNED BY: LOREN THOMAS
 ASSISTANT CHIEF ENGINEER (DEVELOPMENT)
 ORIGINAL SIGNED BY: TOM COLE
 CHIEF ENGINEER

STANDARD DRAWING
GUARDRAIL TERMINAL TYPE 2-A, WITH 10:1 OR FLATTER FORESLOPE
 REQUIRES SHEET 1 OF 2 & STD. DWGS. G-1-A-1 THRU G-1-A-4

English
 STANDARD DRAWING NO.
G-1-C-1
 SHEET 2 OF 2

ORIGINAL STORED AT: ITD, Headquarters 3311 West State Boise, Idaho

ORIGINAL SIGNED BY:
 DATE: TED E. MASDN
 DECEMBER 6, 2010