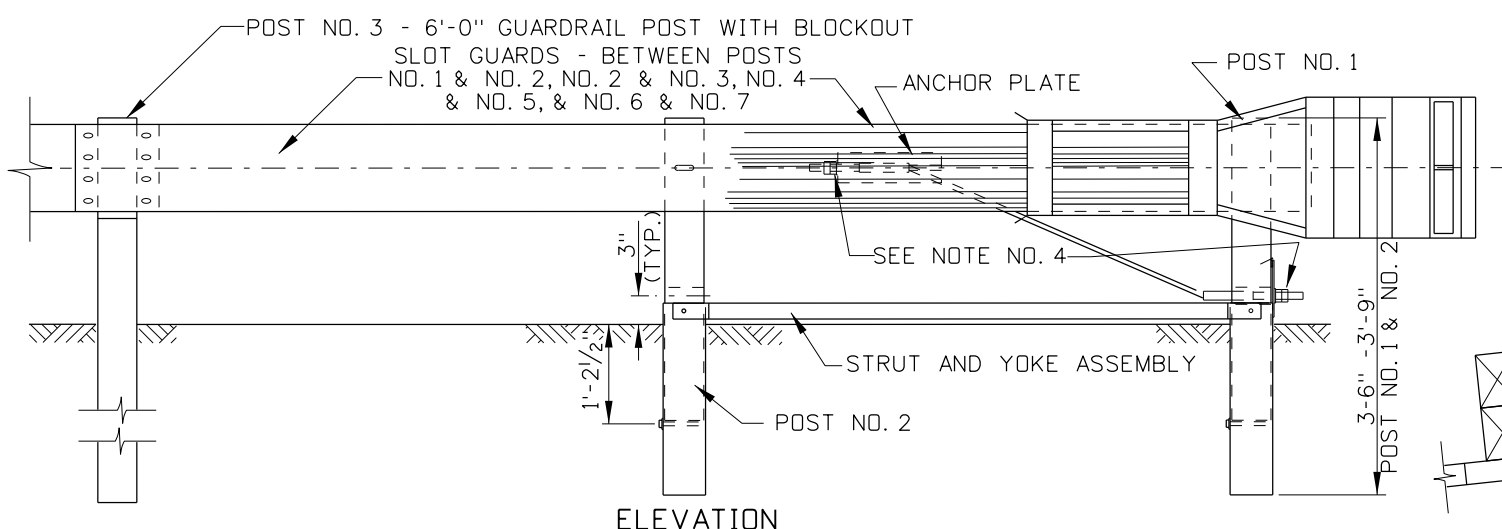


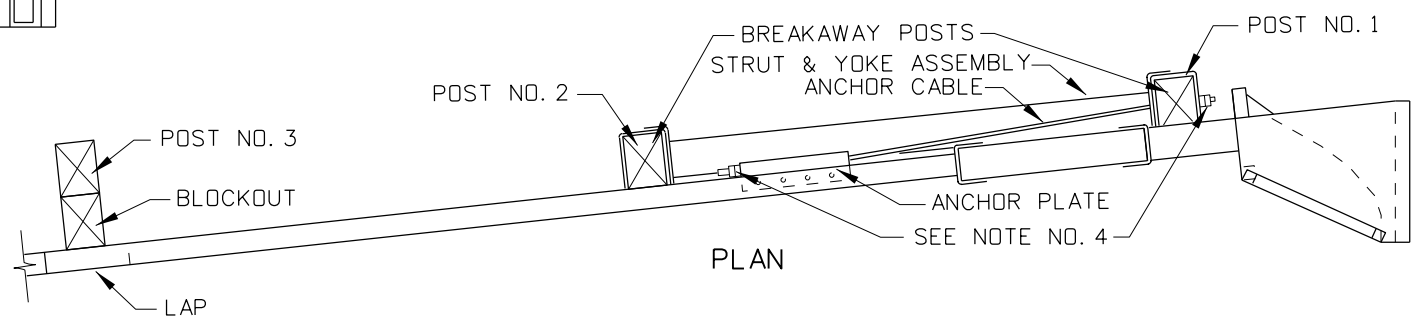
PLAN VIEW

- \* a INSTALLATION OF POST SPACING REFER TO MANUFACTURES SPECIFICATIONS PER APPROVED LIST.
- \* b THE INNER HINGE LINE IS 2' BEHIND THE BACK OF GUARDRAIL POSTS NO. 3 THROUGH NO. 8 (2'-7 1/2" FOR POST NO. 2)
- \* c PAVE ALONG THE FACE OF THE POSTS TO THE EDGE OF POST NO. 3 THEN RETURN TO THE NORMAL SHOULDER.



ELEVATION

BUFFERED END & ANCHORAGE ASSEMBLY

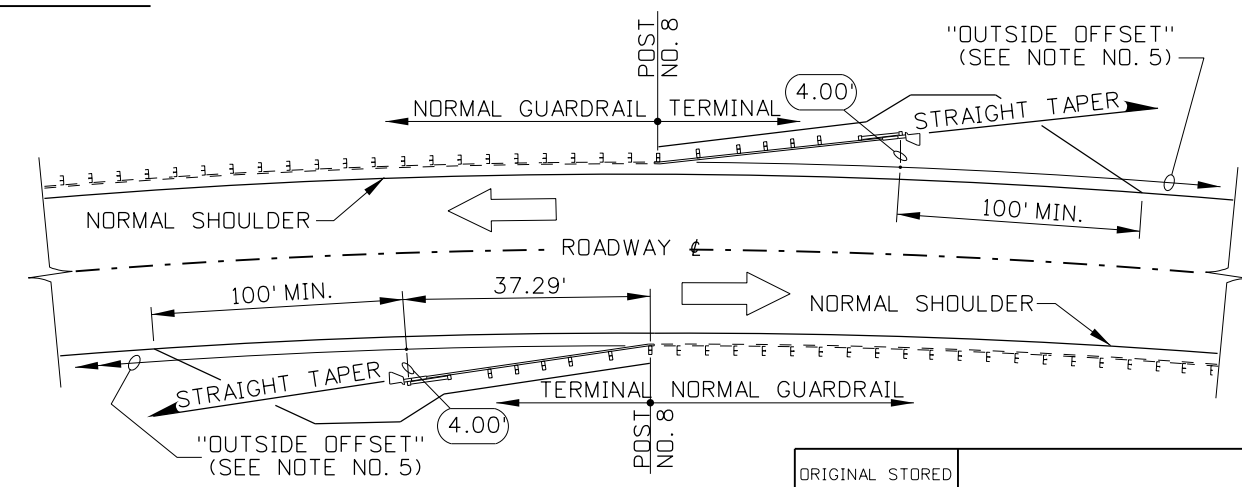


PLAN

NOTES

1. TERMINAL TYPE 5 ALTERNATE "A" AND "B" ARE INTERCHANGEABLE AND ARE TO BE INSTALLED AT THE INSTALLERS DISCRETION. SEE STANDARD DRAWING G-1-F-1 FOR TERMINAL TYPE 5 ALTERNATE "A".
2. THE TERMINAL TYPE 5 ALTERNATE "B" FOLLOWS A STRAIGHT TAPER AS SHOWN AND THE TOTAL LAYOUT MUST MEET OR EXCEED THE PERFORMANCE CRITERIA SET FORTH IN NATIONAL COOPERATIVE RESEARCH PROGRAM REPORT 350, TL-3 "RECOMMENDED PROCEDURES FOR THE SAFETY PERFORMANCE OF HIGHWAY FEATURES".
3. FOR INSTALLATION DETAILS OF GUARDRAIL, POSTS, BLOCKOUTS, AND FITTINGS REFER TO STANDARD DRAWING G-1-A-1 THROUGH G-1-A-4. FOR ERECTION DETAILS SPECIFIC TO THIS AND OTHER TERMINALS SEE THE INFORMATION PROVIDED BY THE MANUFACTURER.

4. THE OUTSIDE NUT ON EACH END OF THE ANCHOR CABLE SHALL BE TORQUED TO A MINIMUM OF 100 ft. - lbs. AGAINST THE INSIDE NUT (OUTSIDE NUTS NOT SUPPLIED WITH PROPRIETARY TERMINAL).
5. WHEN A TERMINAL TYPE 5 ALTERNATE "B" IS CONSTRUCTED ON A HORIZONTAL CURVE, USE THE ALTERNATE METHOD DESCRIBED IN ITEM "\* d" FOR ESTABLISHMENT OF THE POST PLACEMENTS. POST NO. 1 IS 4.00' OUTSIDE OF THE "OUTSIDE OFFSET", 2' OUTSIDE OF THE NORMAL SHOULDER. DO NOT PLACE THE TERMINAL TYPE 5 ALTERNATE "B" ON THE INSIDE OF A GREATER THAN 8° HORIZONTAL CURVE.
6. NOT TO SCALE.



CURVED ROADWAY TERMINAL PLACEMENT

ORIGINAL STORED AT: ITD, Headquarters 3311 West State Boise, Idaho

ORIGINAL SIGNED BY: TED E. MASON  
DATE ORIGINAL SIGNED: OCTOBER 26, 2010

REVISIONS							
NO.	DATE	BY	NO.	DATE	BY	NO.	DATE
1	01-03	MSM					
2	10-04	MSM					
3	05-06	MSM					
4	09-10	MGL					

SCALES SHOWN ARE FOR 11" X 17" PRINTS ONLY  
CADD FILE NAME: g1f2\_1010.dgn  
DRAWING DATE: FEBRUARY, 2000

**IDAHO TRANSPORTATION DEPARTMENT**  
BOISE IDAHO

ORIGINAL SIGNED BY: LOREN THOMAS  
ASSISTANT CHIEF ENGINEER (DEVELOPMENT)  
ORIGINAL SIGNED BY: TOM COLE  
CHIEF ENGINEER

STANDARD DRAWING  
**GUARDRAIL TERMINAL TYPE 5 ALTERNATE "B"**  
REQUIRES STD. DWGS. G-1-A-1 THRU G-1-A-4

**English**  
STANDARD DRAWING NO.  
**G-1-F-2**  
SHEET 1 OF 1