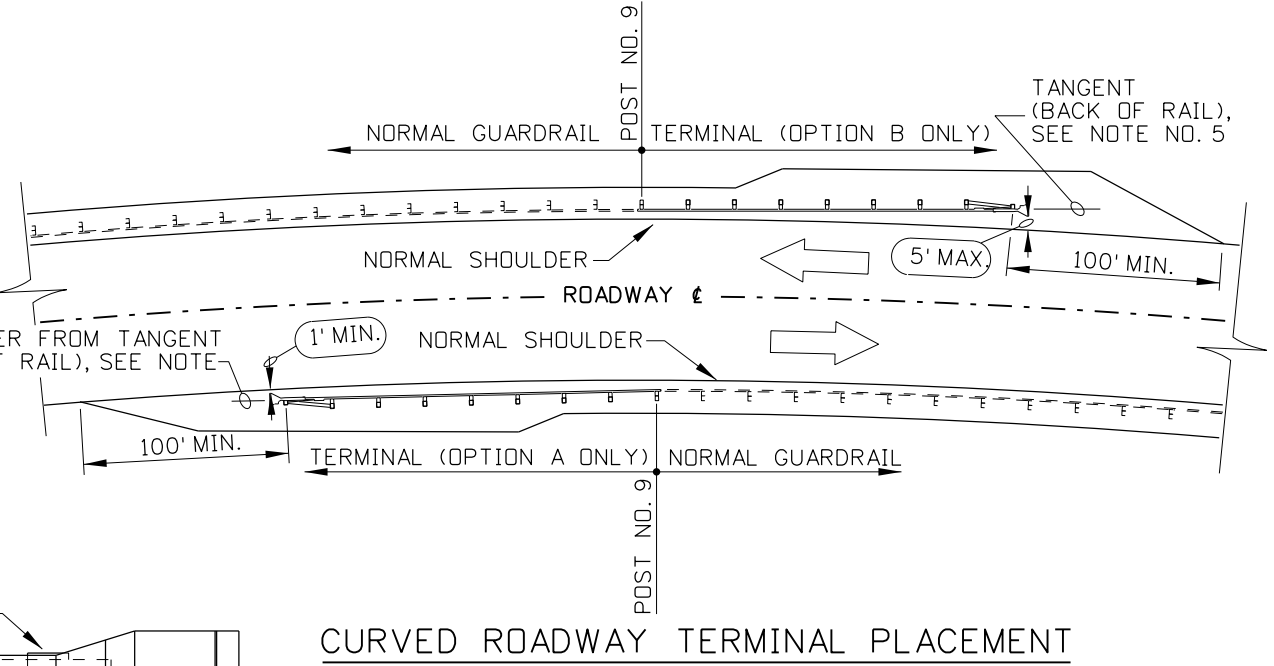
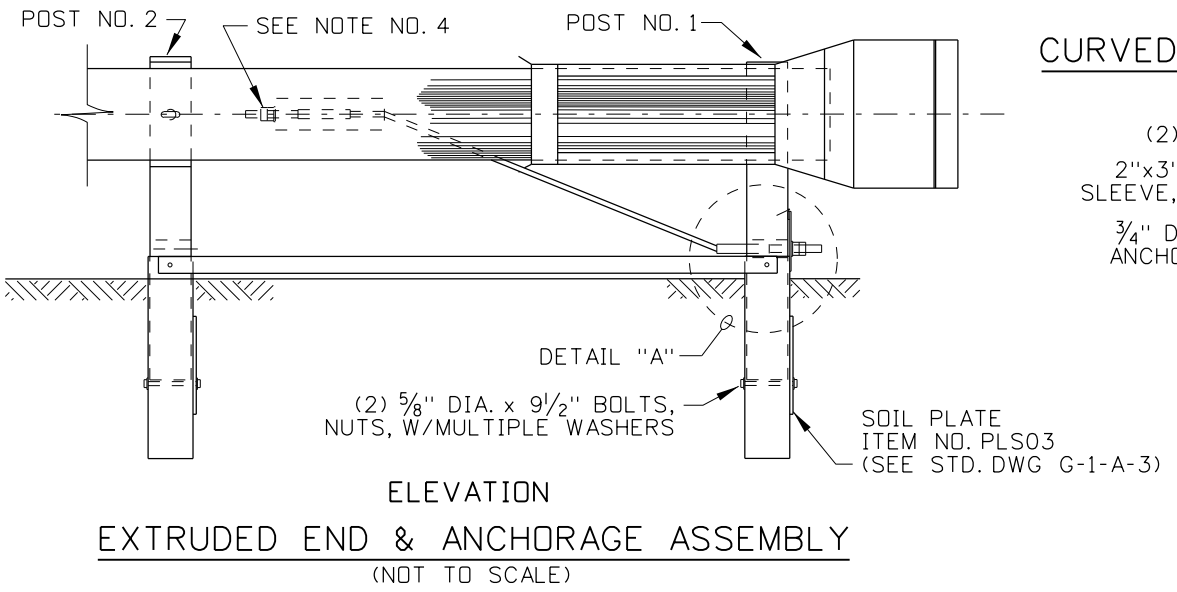


OPTION B SUB-NOTES
 * x 3'-4' PREFERRED WIDTH,
 * y 2' LIMITED SPACE,
 * z 1' DIFFICULT TERRAIN,

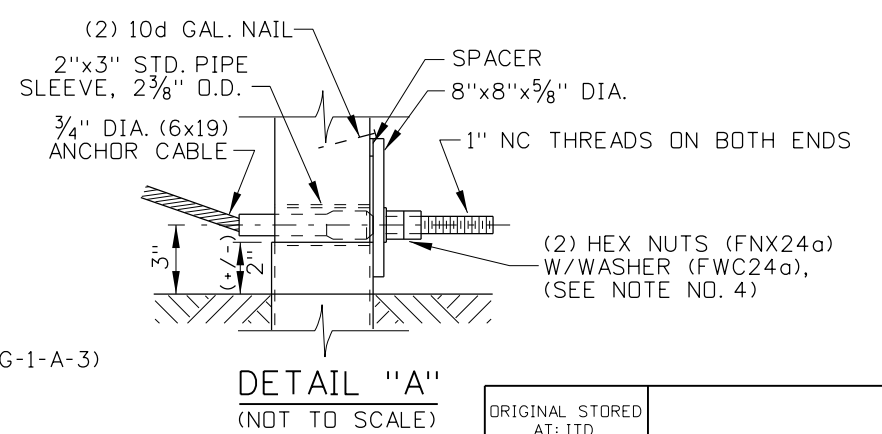
NOTES

- ON TANGENT OR STRAIGHT SECTIONS OF ROADWAY "OPTION A" IS THE PREFERRED INSTALLATION. "OPTION B" IS TO BE INSTALLED WHEN SPACE DOES NOT PERMIT "OPTION A". "OPTION B" HAS THREE SUB-OPTIONS (* x, * y, & * z), * x IS THE MOST PREFERRED SUB-OPTION.
- THE TERMINAL TYPE 10 MUST FOLLOW A STRAIGHT LINE OR A 50:1 STRAIGHT LINE TAPER AS SHOWN. THE TOTAL LAYOUT MUST MEET OR EXCEED THE REQUIREMENTS SET FORTH IN NATIONAL COOPERATIVE HIGHWAY RESEARCH PROGRAM REPORT 350 (TL-3), "RECOMMENDED PROCEDURES FOR THE SAFETY PERFORMANCE OF HIGHWAY FEATURES".
- FOR INSTALLATION DETAILS OF GUARDRAIL, POSTS, BLOCKOUTS, AND FITTINGS REFER TO STANDARD DRAWINGS G-1-A-1 THROUGH G-1-A-4. THE EXTRUDED HEAD, AND OTHER ITEMS SHOWN IN THE DETAILS ARE FOR THE ET-2000 TERMINAL. FOR END TREATMENT DETAILS SPECIFIC TO THIS AND OTHER TERMINALS SEE THE INFORMATION PROVIDED BY THE MANUFACTURER. THE LIST OF VIABLE TERMINAL ENDS ARE: ET-2000, BEST, SKT 350, AND LET. AN "EQUIVALENT" TYPE 10 TERMINAL MUST MEET THE REQUIREMENTS FOR USE AS A "NCHRP 350 (TL-3) APPROVED TERMINAL".
- THE OUTSIDE NUTS ON THE ANCHOR CABLE SHALL BE TORQUED AGAINST INSIDE NUT A MINIMUM OF 100 ft./lbs.
- WHEN A TYPE 10 TERMINAL IS CONSTRUCTED ON A HORIZONTAL CURVE, PLACE THE TERMINAL OFF OF THE "TANGENT (BACK OF RAIL)". PLACE "OPTION A" ON A 50:1 TAPER FROM THE TANGENT (BACK OF RAIL) AT POST NO. 9. USE "OPTION B" ON OUTSIDE CURVES AND "OPTION A" ON INSIDE CURVES. DO NOT PLACE THE TYPE 10 TERMINAL ON THE INSIDE OF A GREATER THAN 8° HORIZONTAL CURVE.
- NOT TO SCALE.

SUB- NOTES
 * a TOP OF STEEL TUBES SHALL BE EXPOSED SAME AS POST NO. 1 (SEE DETAIL "A")
 * b END GUARDRAIL PAD AT ϵ OF POST NO. 6, USE (+/-) 5:1 TAPER BACK TO BALLAST SHOULDER
 * c 1' MIN. IN DIFFICULT TERRAIN (SEE STD. DWG. G-1-A-1)



CURVED ROADWAY TERMINAL PLACEMENT



REVISIONS							
NO.	DATE	BY	NO.	DATE	BY	NO.	DATE
1	06-01	MSM					
2	01-04	MSM					
3	12-04	MSM					
4	05-06	MSM					
5	09-10	PLR					

SCALES SHOWN ARE FOR 11" X 17" PRINTS ONLY
 CADD FILE NAME: g1m_1010.dgn
 DRAWING DATE: JANUARY, 2000

IDAHO TRANSPORTATION DEPARTMENT

BOISE IDAHO

ORIGINAL SIGNED BY: LOREN THOMAS
 ASSISTANT CHIEF ENGINEER (DEVELOPMENT)

ORIGINAL SIGNED BY: TOM COLE
 CHIEF ENGINEER

STANDARD DRAWING
GUARDRAIL TERMINAL TYPE 10
 REQUIRES STD. DWGS. G-1-A-1 THRU G-1-A-4

English
 STANDARD DRAWING NO.
G-1-M
 SHEET 1 OF 1

ORIGINAL STORED AT: ITD, Headquarters 3311 West State Boise, Idaho

ORIGINAL SIGNED BY:
 DATE: TED E. MASON
 OCTOBER 26, 2010