

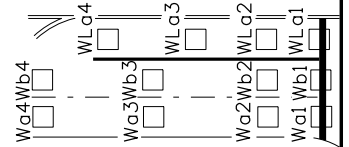
POSITION

- MAGNETIC ORIENTATION OF APPROACHING TRAVEL LANE.
N = NORTH, S = SOUTH, ETC.
- VEHICULAR MOVEMENT IN TRAVEL LANE: L = LEFT TURN; R = RIGHT TURN; NO ENTRY = THROUGH
- LANE DESIGNATION FOR EACH MOVEMENT: a-z IN ASCENDING ORDER, a BEING NEAREST THE CURB OR EDGE OF PAVEMENT.

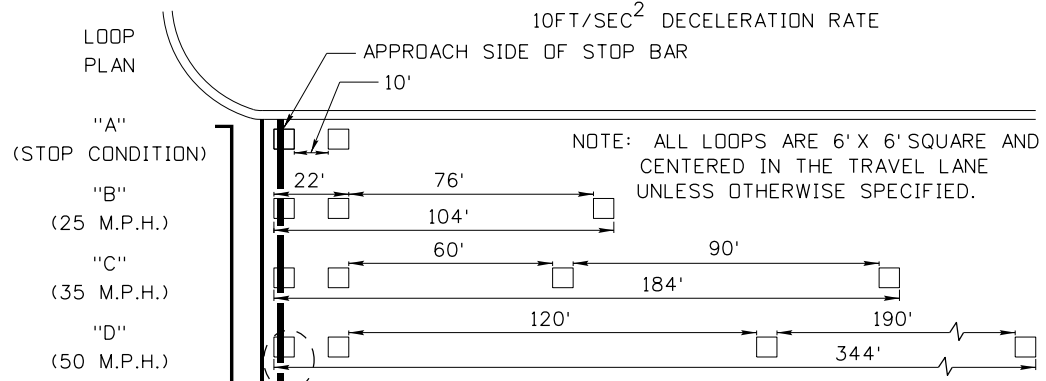
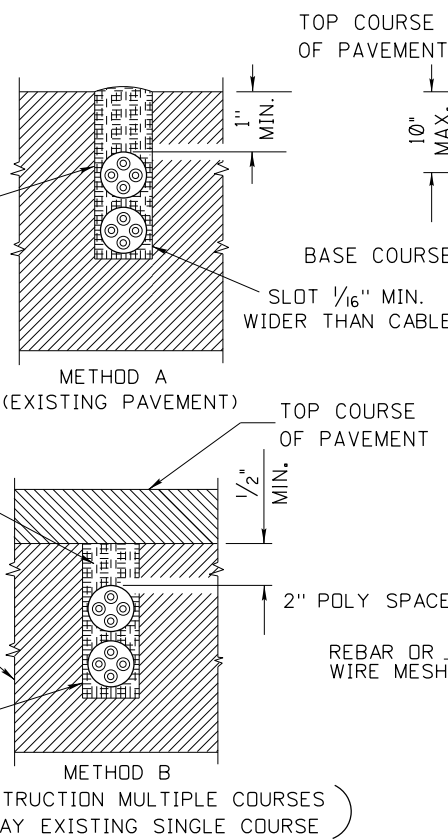
Na4
Na3
Na2
Na1

- LOOP NUMBER IN EACH TRAVEL LANE: 1 - 4 IN ASCENDING ORDER, 1 BEING THE LOOP NEAREST THE STOP BAR.

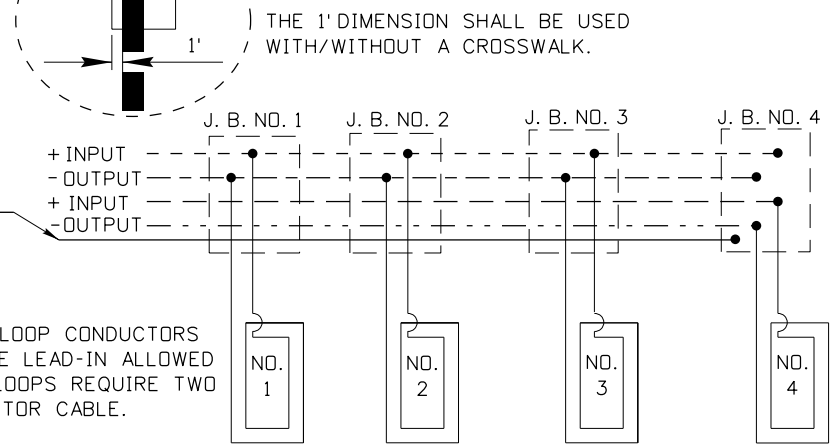
LOOP NUMBERING PROCEDURE
EXAMPLE
(W L a 3)
1 2 3 4



LOOP NUMBERING SYSTEM



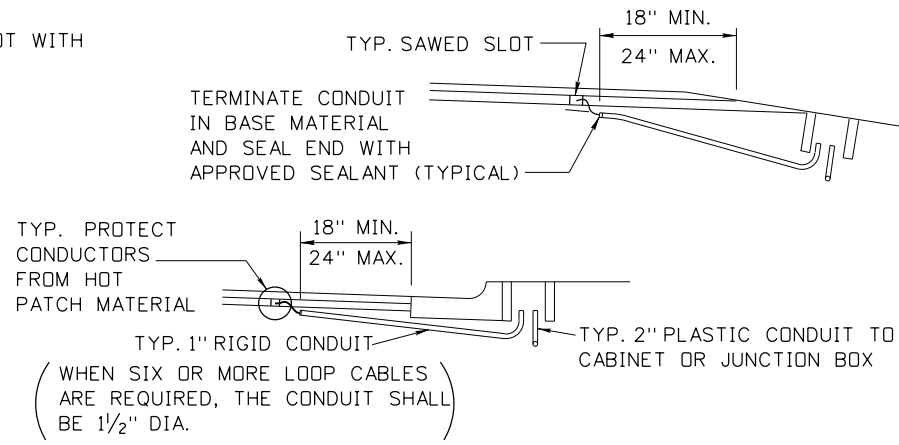
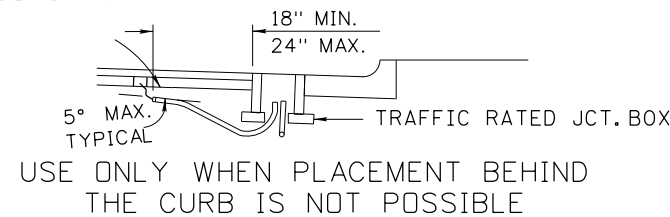
DETECTOR LOOP SPACING PLAN



LOOP SYSTEM AND JUNCTION BOX WIRING DIAGRAM

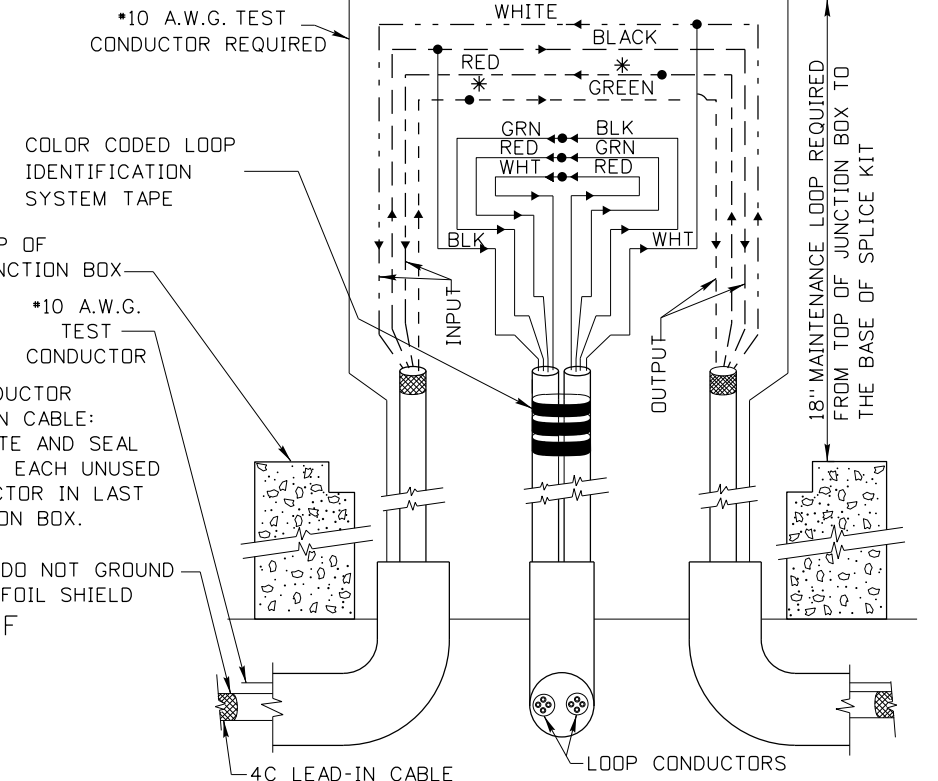
LOOP CONDUCTOR INSTALLATION

- NOTES:
- METHOD "C" MAY BE USED ONLY WITH PRE-FORMED LOOPS.
 - HYDRO CLEAN AND AIR DRY SLOTS AFTER CUTTING AND PRIOR TO CABLE INSTALLATION.
 - BED LOOP CONDUCTORS IN SEALANT FOR TOTAL ENCAPSULATION.
 - SEAT LOOP CONDUCTORS IN SLOT WITH A BLUNT INSTRUMENT.



JUNCTION BOX AND CONDUIT LOCATION

- NOTES:
- ALL CONDUCTOR SPLICES SHALL BE SOLDERED AND WATERPROOFED WITH AN APPROVED SPLICE KIT.
 - THE FOIL SHIELD SHALL BE INSULATED TO PREVENT GROUNDING AT THE JUNCTION BOX.
 - * SPLICE DUAL PURPOSE LOOPS TO THE RED AND GREEN CONDUCTORS.



LOOP SPLICE DETAIL AT JUNCTION BOX

LANE NO.	TAPE COLOR
1	BLACK
2	WHITE
3	RED
4	GREEN
5	ORANGE
6	BLUE

IN ASCENDING ORDER - BLACK SHALL BE USED FOR THE LANE NEAREST THE CURB OR EDGE OF PAVEMENT.

EXAMPLE:
CONDUCTORS FOR LOOP 1
LANE 1 REQUIRE 1 BAND OF BLACK TAPE.

CONDUCTORS FOR LOOP 3
LANE 4 REQUIRE 3 BANDS OF GREEN TAPE.

COLOR CODED LOOP IDENTIFICATION SYSTEM

ORIGINAL STORED AT: ITD, Headquarters 3311 West State Boise, Idaho

ORIGINAL SIGNED BY: CARL D. MAIN
DATE ORIGINAL SIGNED: JULY 12, 2010

REVISIONS							
NO.	DATE	BY	NO.	DATE	BY	NO.	DATE
1	12-93	HEB	6	08-08	NQB		
2	12-94	HEB	7	07-10	HEB		
3	03-96	HEB					
4	07-03	HEB					
5	08-06	HEB					

SCALES SHOWN ARE FOR 11" X 17" PRINTS ONLY
CADD FILE NAME: i5_0710.dgn
DRAWING DATE: DECEMBER, 1994

IDAHO TRANSPORTATION DEPARTMENT
BOISE IDAHO

ORIGINAL SIGNED BY: LOREN THOMAS
ASSISTANT CHIEF ENGINEER (DEVELOPMENT)
ORIGINAL SIGNED BY: TOM COLE
CHIEF ENGINEER

STANDARD DRAWING
LOOP DETECTORS
10FT/SEC² DECELERATION RATE

English
STANDARD DRAWING NO. I-5
SHEET 1 OF 1