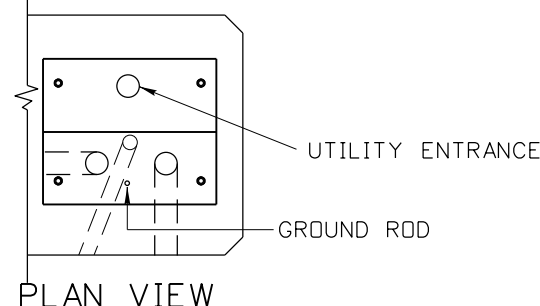
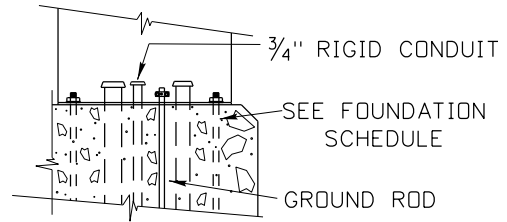


TOP VIEW



PLAN VIEW



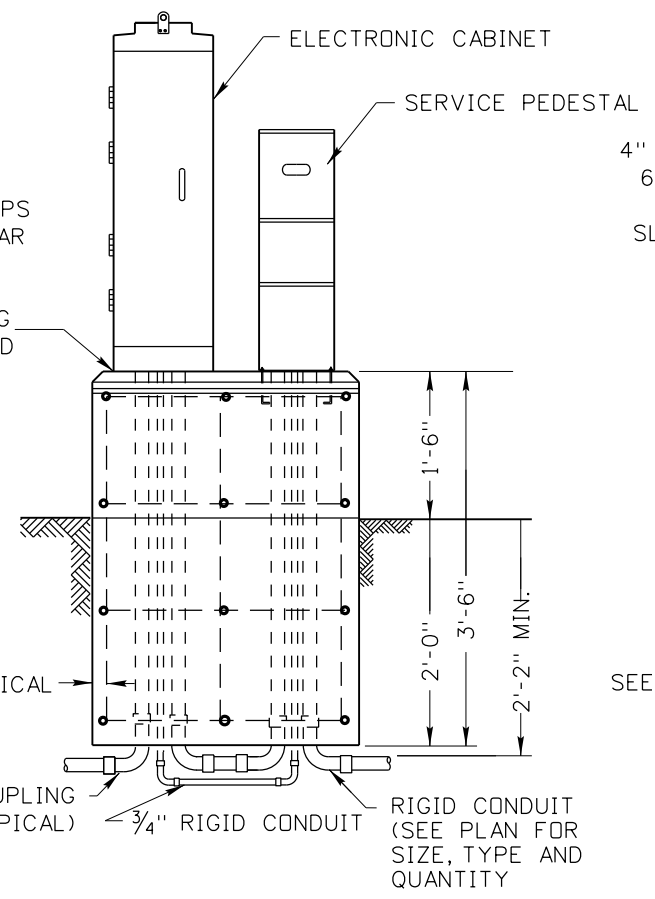
FRONT VIEW PEDESTAL INSTALLATION DETAIL

SEE FOUNDATION SCHEDULE FOR HOOPS AND VERTICAL REBAR

VERIFY ORIENTATION OF SERVICE PEDESTAL ACCESS DOOR PRIOR TO INSTALLATION

2" CLEARANCE TYPICAL

STEEL COUPLING REQ'D (TYPICAL)

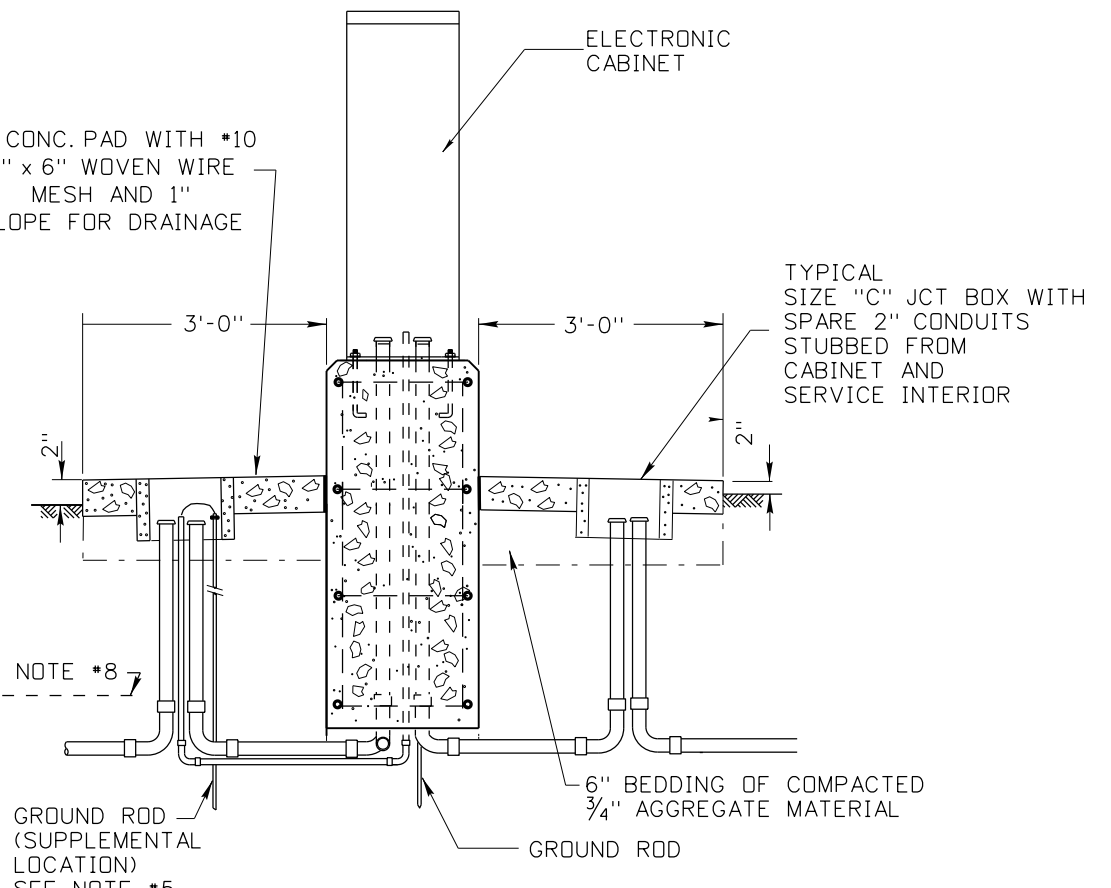


FRONT VIEW

4" CONC. PAD WITH #10 6" x 6" WOVEN WIRE MESH AND 1" SLOPE FOR DRAINAGE

SEE NOTE #8

GROUND ROD (SUPPLEMENTAL LOCATION) SEE NOTE #5



SECTION CC

NOTES:

1. THE FOUNDATION SHALL BE LOCATED AS INDICATED ON THE PLAN SHEETS.
2. ALL CONDUITS, ELBOWS AND COUPLINGS WITHIN AND PROTRUDING FROM THE FOUNDATION SHALL BE RIGID STEEL. THE REMAINING CONDUITS SHALL BE AS SHOWN ON THE PLANS.
3. STUBOUTS SHALL BE TERMINATED WITH A STEEL BONDING BUSHING.
4. PLASTIC PUSH PLUG REQUIRED AT BOTH ENDS OF SPARE CONDUITS.
5. GROUND IN ACCORDANCE WITH THE N.E.C.
6. CONDUIT SHALL BE INSTALLED IN SUCH A MANNER AS TO NOT CAUSE MODIFICATION OF THE CABINET.
7. GRADE TO PROVIDE DRAINAGE AWAY FROM THE CABINET FOUNDATION.
8. 6" WIDE ELECTRICAL HAZARD TAPE SHALL BE INSTALLED 1'-0" ABOVE THE CONDUIT. (TYPICAL OF ALL CONDUIT PLACED IN GROUND).
9. FOUNDATION REBAR CAGES MAY BE WELDED IF THE REBAR CONFORMS TO ASTM A706/A706M AND WELDING CONFORMS TO ANSI/AWS D1.4. (STRUCTURAL WELDING CODE - REINFORCING STEEL).
10. USE SERVICE PEDESTAL BASE FOR ANCHOR BASE TEMPLATE.

ELECTRONIC CABINET AND SERVICE PEDESTAL FOUNDATION SCHEDULE													
CABINET TYPE	FOUNDATION TYPE	HOOPS			VERTICAL REBAR			CU. YDS. CONC. FOUNDATION PAD		CABINET ANCHOR BOLTS		SERVICE PEDESTAL ANCHOR BOLTS	
		NO.	SIZE	LIN. FT.	NO.	SIZE	LIN. FT.	FOUNDATION	PAD	QNTY.	SIZE	QNTY.	SIZE
ELECTRONIC	170/334	4	4 x 2	86'-2"	9	*4	27'-8"	1.74	.35	4	1/2" X 12" X 3"	4	5/8" X 6" X 2"

ORIGINAL STORED AT: ITD, Headquarters 3311 West State Boise, Idaho

REVISIONS							
NO.	DATE	BY	NO.	DATE	BY	NO.	DATE
1	08-96	HEB					
2	02-14	HEB					

SCALES SHOWN ARE FOR 11" X 17" PRINTS ONLY
 CADD FILE NAME: i7b20414.dgn
 DRAWING DATE: DECEMBER, 1994

IDAHO TRANSPORTATION DEPARTMENT

BOISE IDAHO

ORIGINAL SIGNED BY: CARL D. MAIN
 DESIGN/TRAFFIC SERVICES ENGINEER

STANDARD DRAWING
ELECTRONIC CABINET & SERVICE PEDESTAL FOUNDATION DETAIL

English
 STANDARD DRAWING NO.
I-7-B-2
 SHEET 1 OF 1

ORIGINAL SIGNED BY:
 ROBERT KOEBERLEIN
 DATE ORIGINAL SIGNED:
 APRIL 25, 2014