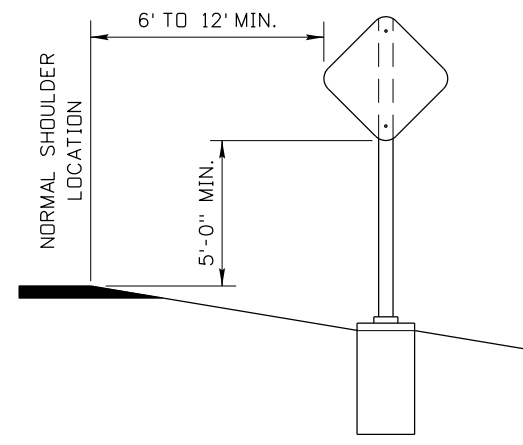
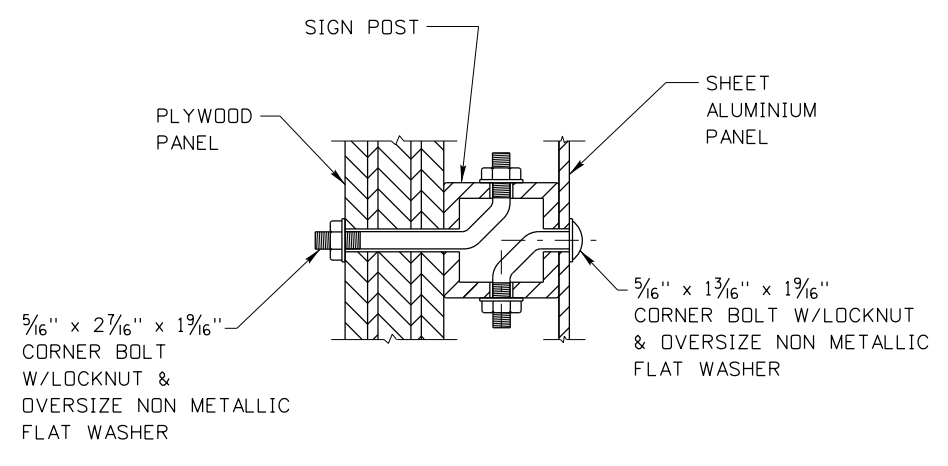


URBAN LOCATIONS
WITH CURB AND GUTTER



RURAL LOCATIONS
(SEE NOTE 3 WHEN SOLID ROCK IS ENCOUNTERED)

TYPICAL INSTALLATION FOR SIGNS



5/16" x 2 7/16" x 1 9/16"
CORNER BOLT
W/LOCKNUT &
OVERSIZE NON METALLIC
FLAT WASHER

SHEET
ALUMINIUM
PANEL

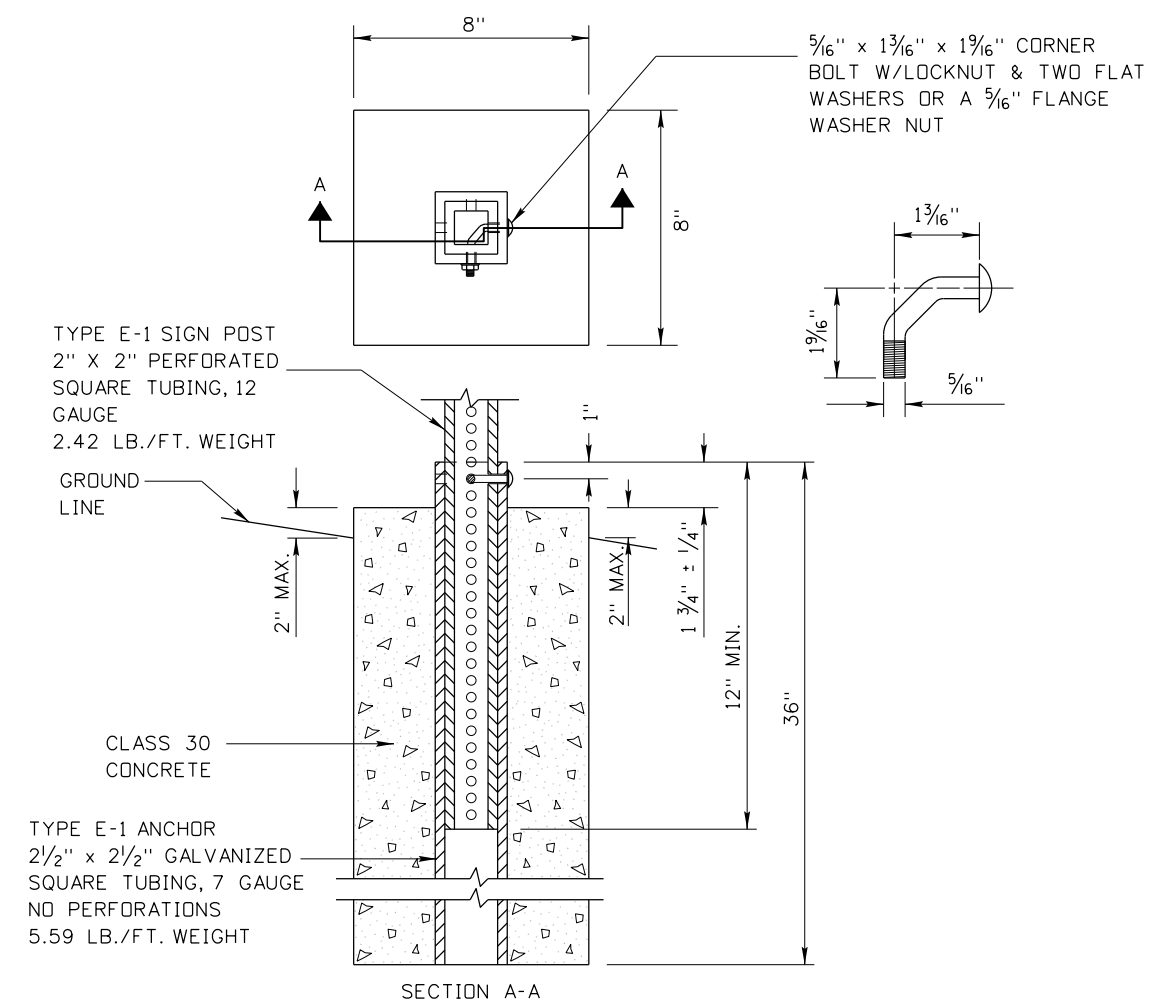
5/16" x 1 3/16" x 1 9/16"
CORNER BOLT W/LOCKNUT
& OVERSIZE NON METALLIC
FLAT WASHER

CORNER BOLTS MAY BE USED WITH BACK TO BACK INSTALLATIONS

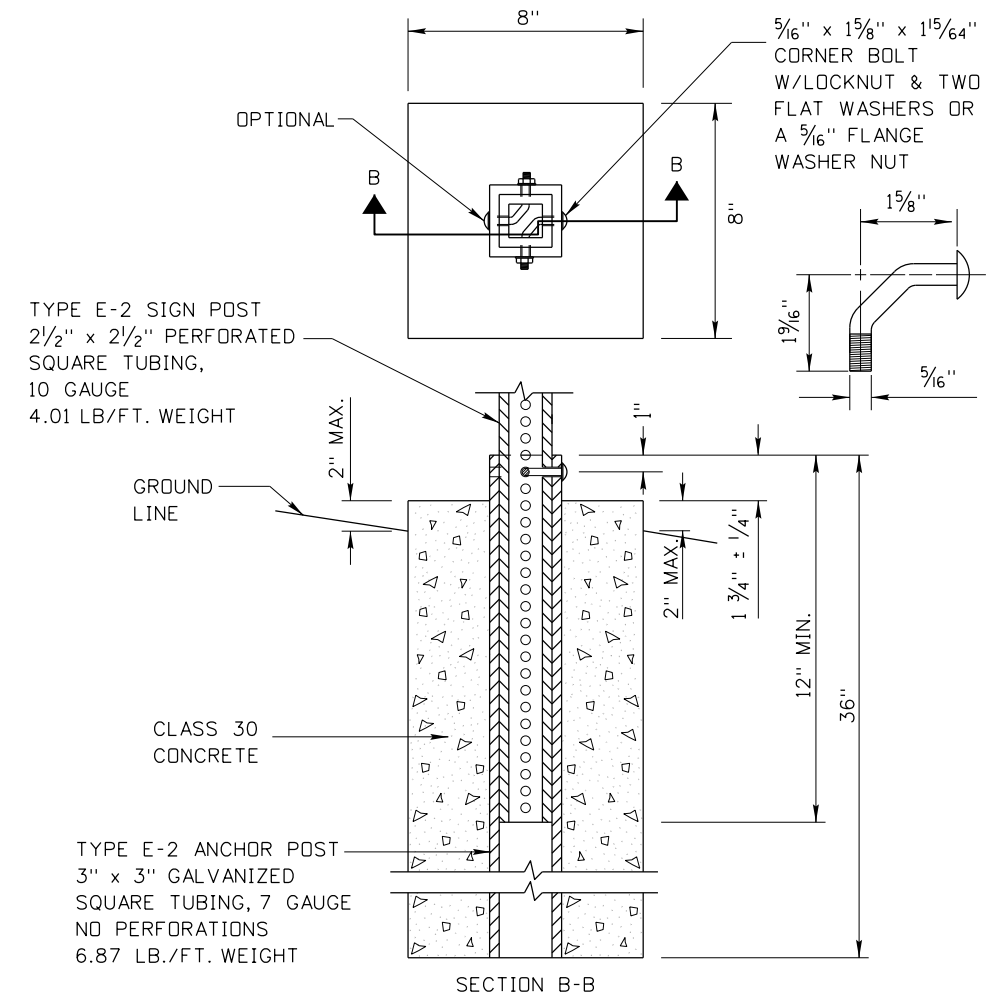
BACK TO BACK SIGN MOUNTING DETAILS

NOTES

1. ENSURE THAT THE BOTTOM OF ANCHOR IS BE KEPT OPEN TO DRAIN.
2. DO NOT USE MORE THAN ONE POST PER SIGN INSTALLATION.
3. INSTALL SIGN POST AND ANCHOR IN FOUNDATION OR GROUT INTO SOLID ROCK. ENSURE THAT THE 2" X 2" POST INSTALLATIONS ARE EMBEDDED 18" ONTO SOLID ROCK AND 2 1/2" X 2 1/2" POST INSTALLATIONS ARE EMBEDDED 24" INTO SOLID ROCK.
4. DO NOT USE BRACE ANGLES.
5. DRAWING NOT TO SCALE.



2" X 2" SIGN POST INSTALLATION DETAILS



2 1/2" X 2 1/2" SIGN POST INSTALLATION DETAILS

REVISIONS							
NO.	DATE	BY	NO.	DATE	BY	NO.	DATE
1	02-92	JEC	6	05-15	HEB		
2	12-94	HEB					
3	06-99	HEB					
4	12-01	NQB					
5	12-13	HEB					

SCALES SHOWN
ARE FOR 11" X 17"
PRINTS ONLY

CADD FILE NAME:
i8f_0515.dgn

DRAWING DATE:
JULY, 1991

**IDAHO
TRANSPORTATION
DEPARTMENT**



BOISE IDAHO

ORIGINAL SIGNED BY: KEVIN SABLAN
DESIGN/TRAFFIC SERVICES ENGINEER

STANDARD DRAWING
**BREAKAWAY STEEL
SIGN POSTS
TYPE E**

ORIGINAL STORED
AT: ITD,
Headquarters
3311 West State
Boise, Idaho

English

STANDARD DRAWING NO.
I-8-F

SHEET 1 OF 1

ORIGINAL SIGNED BY:
RYAN D. LANCASTER
DATE ORIGINAL SIGNED:
MAY 28, 2015