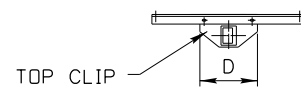
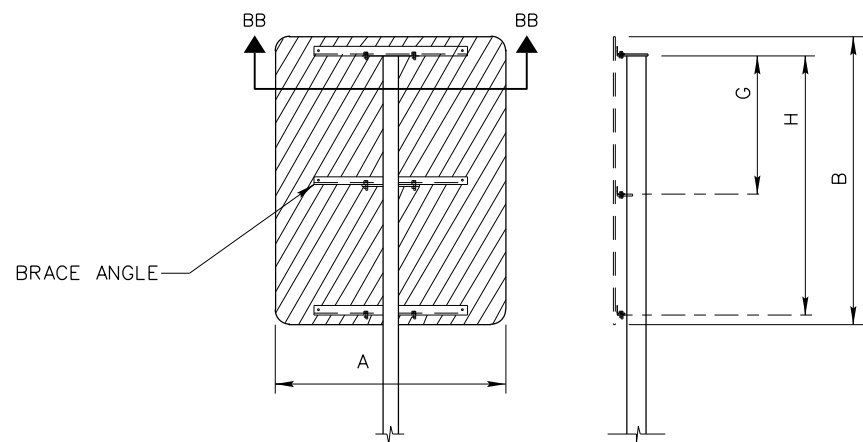


4" x 3" POST DETAILS



SECTION BB-BB

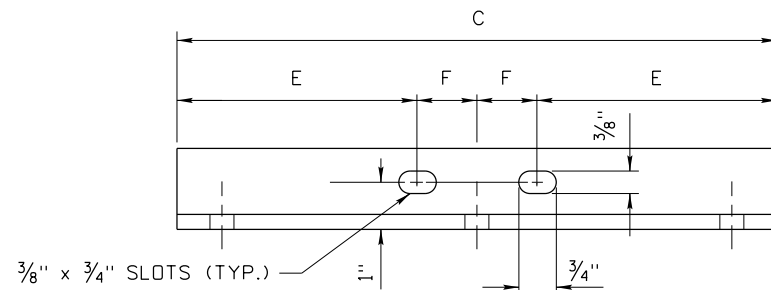


POST AND BRACE ANGLES
4" x 3", 5" x 5", 6" x 6" POSTS

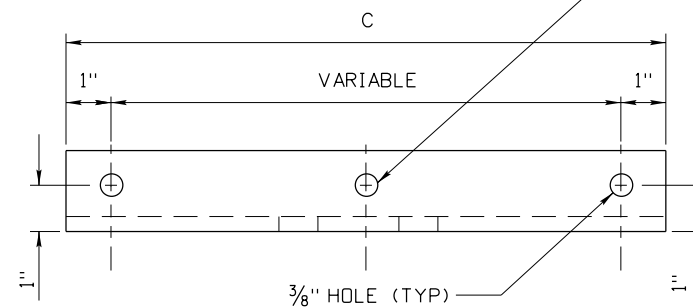
SIGN DESCRIPTION	SIGN SIZE		C	D	E	F	G	H	WEIGHT IN LBS.
	A	B							
STOP	36"	36"	32"	12"	11"	5"	30"	N/A	14.80
	48"	48"	42"	12"	16"	5"	20"	N/A	19.40
YIELD	60" TRIANGLE		48"	12"	19"	5"	N/A	N/A	13.90
			12"	12"	1"	5"	35"		
SQUARE AND RECTANGULAR SIGNS	36"	48"	32"	12"	11"	5"	42"	N/A	14.80
	48"	60"	32"	12"	11"	5"	27"	54"	22.20
	36"	36"	32"	12"	11"	5"	30"	N/A	14.80
	48"	48"	44"	12"	17"	5"	42"	N/A	22.30
	48"	36"	32"	12"	11"	5"	30"	N/A	14.80
	72"	36"	62"	12"	26"	5"	18"	N/A	28.60
	72"	48"	62"	12"	26"	5"	30"	N/A	28.60
	48"	30"	32"	12"	11"	5"	24"	N/A	14.80
	72"	30"	62"	12"	26"	5"	24"	N/A	28.60
WARNING & AUXL. SIGNS	36"	24"	32"	12"	11"	5"	18"	N/A	14.80
	36"	30"	32"	12"	11"	5"	24"	N/A	14.80
	36"	18"	*	*	*	*	*	N/A	12.00
	48"	18"	42"	12"	16"	5"	20"	N/A	19.40
WARNING	24"	24"	*	*	*	*	*	N/A	12.00
	36"	DIAMOND	26"	12"	8"	5"	16"	N/A	12.00
	48"	DIAMOND	42"	12"	16"	5"	20"	N/A	19.40
WARNING	48"	24"	42"	12"	16"	5"	18"	N/A	19.40
	60"	36"	44"	12"	17"	5"	30"	N/A	20.40
JUNCTION ASSEMBLY	21"	15"	*	*	*	*	POST TOP CLIP NOT REQ'D-COVER PL ONLY		
	2-24" ROUTE MARKERS		27"	12"	8 1/2"	5"	20"	38"	12.50
SINGLE CARDINAL DIRECT'L ASSY.	30"	15"	26"	12"	8"	5"	N/A	N/A	15.20
	36"	36"	26"	12"	8"	5"	13 1/2"	N/A	
JUNCTION ASSEMBLY	21"	15"	*	*	*	*	POST TOP CLIP NOT REQ'D-COVER PL ONLY		
	3-24" ROUTE MARKERS		54"	12"	21"	5"	20"	38"	25.00

- NOTES:
- WEIGHTS OF BRACE ANGLES DO NOT INCLUDE GALVANIZING.
 - ALL BRACE ANGLES SHALL BE 1 3/4" x 1 3/4" x 1/4" AT 2.77 LBS./FT.
 - THE AUXILIARY SIGNS SHALL BE ATTACHED BY DRILLING THE POST WITH TWO HOLES AND FLUSH MOUNT THE SIGN TO THE FACE OF THE POST.
 - REFER TO STANDARD DRAWINGS I-8-D-1, I-8-D-2 & I-8-D-3.
 - WHEN ONLY ONE BRACE IS REQUIRED, PLACE IN THE CENTER OF THE SIGN.

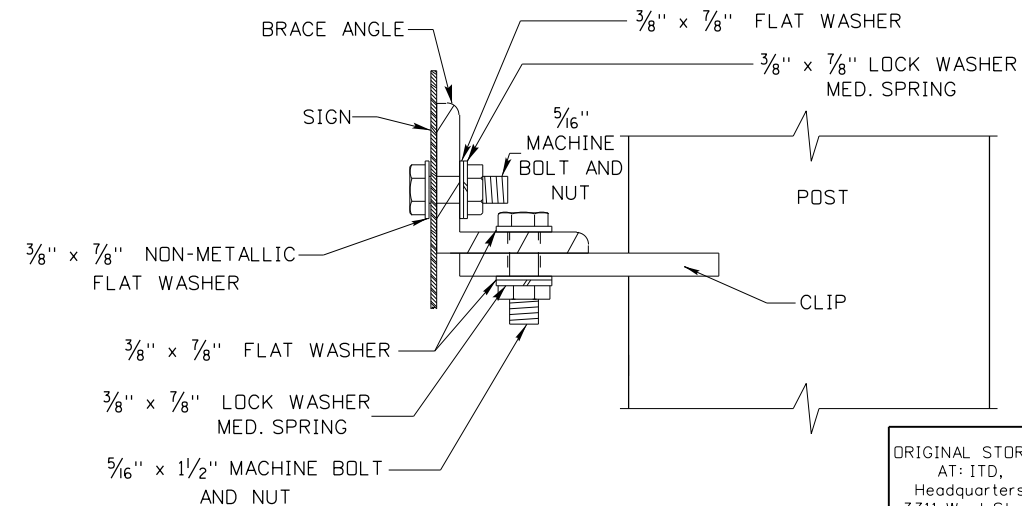
POST DETAILS FOR 4"x3" POSTS						
SIGN DESCRIPTION	SIGN SIZE		G	H	J	K
	A	B				
STOP	30"	30"	25 1/4"	N/A	N/A	28 1/4"
	36"	36"	31 1/4"	N/A	N/A	34 1/4"
YIELD	36" TRIANGLE		25 1/4"	N/A	N/A	30 1/4"
SQUARE AND RECTANGULAR SIGNS	12"	30"	25 1/4"	N/A	N/A	28 1/4"
	24"	36"	18"	N/A	N/A	N/A
	24"	30"	19 1/4"	N/A	N/A	22 1/4"
	24"	30"	25 1/4"	N/A	N/A	28 1/4"
	30"	30"	25 1/4"	N/A	N/A	28 1/4"
	30"	36"	31 1/4"	N/A	N/A	34 1/4"
	36"	24"	19 1/4"	N/A	N/A	22 1/4"
WARNING	18"	DIAMOND	21 1/4"	N/A	N/A	23 1/2"
	30"	DIAMOND	31 1/4"	N/A	N/A	37 1/4"
WARNING & AUXL. SIGNS	30"	DIAMOND	31 1/4"	N/A	N/A	56 1/4"
NO PASS. ZONE	48"	36"	19 1/4"	N/A	N/A	21 1/2"
TRAIL BLAZER ASSEMBLY (ASSY.)	24"	12"	10 1/4"	N/A	N/A	N/A
	24"	24"	N/A	15 3/4"	33 3/4"	51 1/4"
ADV. ROUTE MARKER ASSY.	21"	15"	N/A	N/A	N/A	N/A
SINGLE JCT. ASSY.	24"	24"	19 1/4"	N/A	N/A	38 1/4"
	24"	15"	N/A	24 3/4"	36 3/4"	39 3/4"
HOSPITAL, CAMPING ASSY.	24"	24"	N/A	18 3/4"	36 3/4"	39 3/4"
	24"	6"	N/A	24 3/4"	27 3/4"	29 1/4"



NOTE:
CENTER HOLES IN THE BRACE ANGLES ARE REQUIRED ONLY FOR THOSE SIGNS WHERE "A" IS 72" OR GREATER.



BRACE ANGLE DETAIL



BRACE ANGLE ATTACHMENT DETAIL

ORIGINAL STORED AT: ITD, Headquarters 3311 West State Boise, Idaho

ORIGINAL SIGNED BY:
DATE: ORIGINAL SIGNED:
DECEMBER 6, 2013

REVISIONS							
NO.	DATE	BY	NO.	DATE	BY	NO.	DATE
1	08-96	HEB	6	12-13	HEB		
2	12-01	NQB					
3	12-07	HEB					
4	07-10	HEB					
5	09-11	HEB					

SCALES SHOWN ARE FOR 11" X 17" PRINTS ONLY
CADD FILE NAME: i9a11213.dgn
DRAWING DATE: DECEMBER, 2007

IDAHO TRANSPORTATION DEPARTMENT

BOISE IDAHO

ORIGINAL SIGNED BY: RYAN LANCASTER for
DESIGN/TRAFFIC SERVICES ENGINEER

STANDARD DRAWING
B POST AND BRACE ANGLE DETAIL
REQUIRES STD. DWG. I-9-A-2

English
STANDARD DRAWING NO.
I-9-A-1
SHEET 1 OF 1