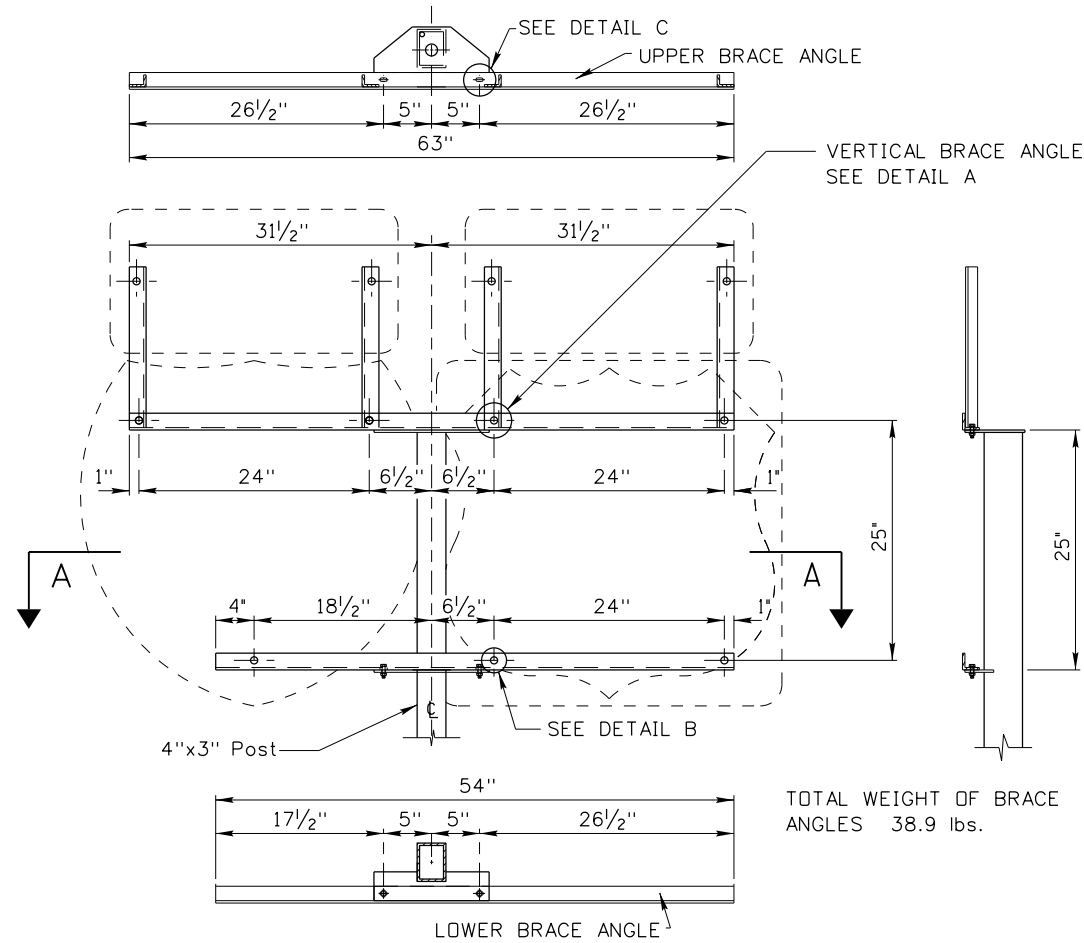
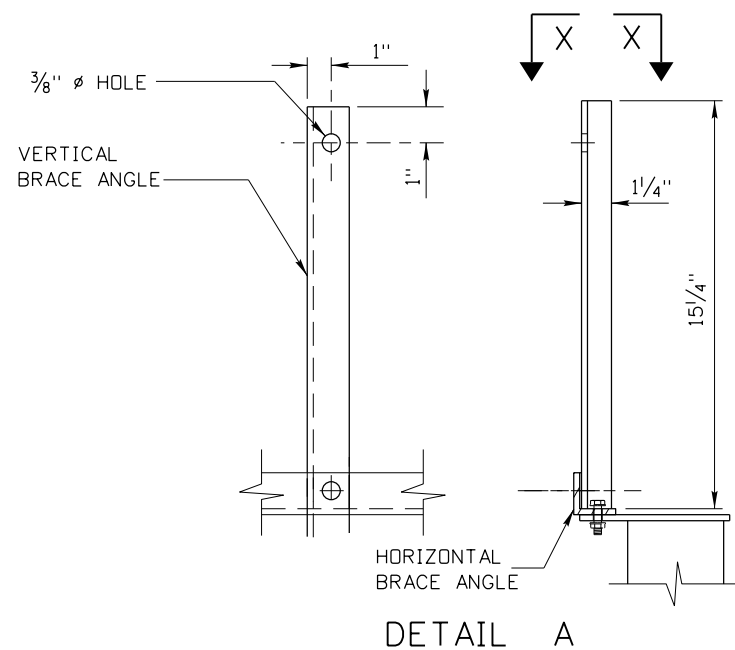


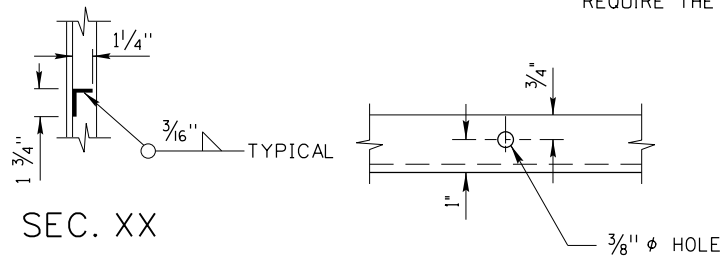
TOP VIEW



SEC. AA



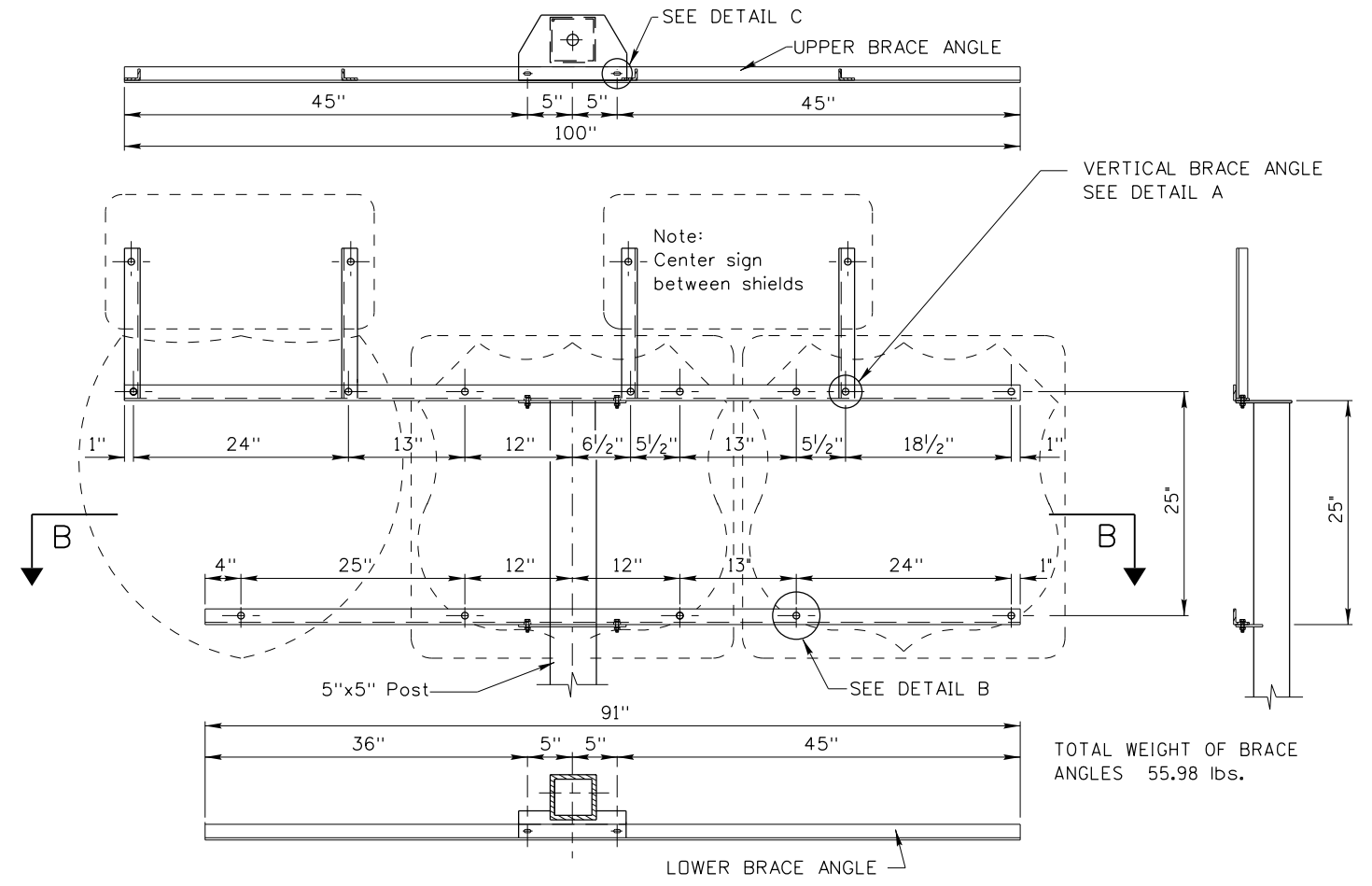
DETAIL A



SEC. XX

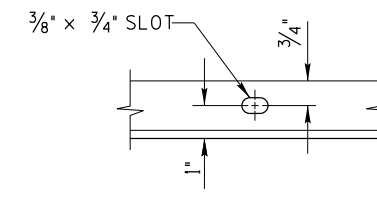
DETAIL B

TOP VIEW

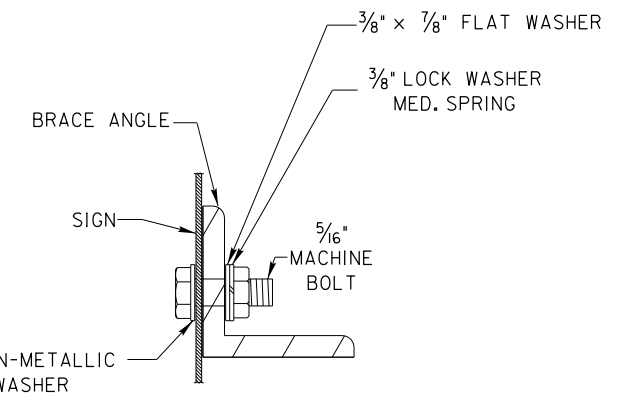


SEC. BB

NOTE:
 THESE BRACE ANGLE ASSEMBLIES MAY
 BE MODIFIED TO ACCOMMODATE ADDITIONAL
 CARDINAL ROUTE MARKERS ABOVE EACH ROUTE
 SHIELD AS SHOWN ON THE PLANS.
 CONFIRMING ROUTE MARKERS DO NOT
 REQUIRE THE VERTICAL BRACE ANGLES.



DETAIL C



TYPICAL SIGN ATTACHMENT DETAIL

NOTES:

1. WEIGHTS OF BRACE ANGLES DO NOT INCLUDE GALVANIZING.
2. ALL BRACE ANGLES SHALL BE 1 3/4"x1 3/4"x1/4" AT 2.77 LBS./FT WITH THE EXCEPTION OF THE VERTICAL BRACE ANGLE WHICH SHALL BE 1 3/4"x1 1/4"x1/4" AT 2.34 LBS./FT.

ORIGINAL STORED
 AT: ITD,
 Headquarters
 3311 West State
 Boise, Idaho

ORIGINAL SIGNED BY:
 DATE: ORIGINAL SIGNED:
 SEPTEMBER 23, 2010

REVISIONS								
NO.	DATE	BY	NO.	DATE	BY	NO.	DATE	BY
1	12-01	NQB						
2	07-03	NQB						
3	09-10	HEB						

SCALES SHOWN
 ARE FOR 11" X 17"
 PRINTS ONLY
 CADD FILE NAME:
 i9b_0910.dgn
 DRAWING DATE:
 AUGUST, 1992

**IDAHO
 TRANSPORTATION
 DEPARTMENT**



BOISE IDAHO

ORIGINAL SIGNED BY: LOREN THOMAS
 ASSISTANT CHIEF ENGINEER (DEVELOPMENT)
 ORIGINAL SIGNED BY: TOM COLE
 CHIEF ENGINEER

STANDARD DRAWING
**CARDINAL ROUTE
 MARKER ASSEMBLIES**
 REQUIRES STD. DWGS. I-8-D

English
 STANDARD DRAWING NO.
I-9-B
 SHEET 1 OF 1