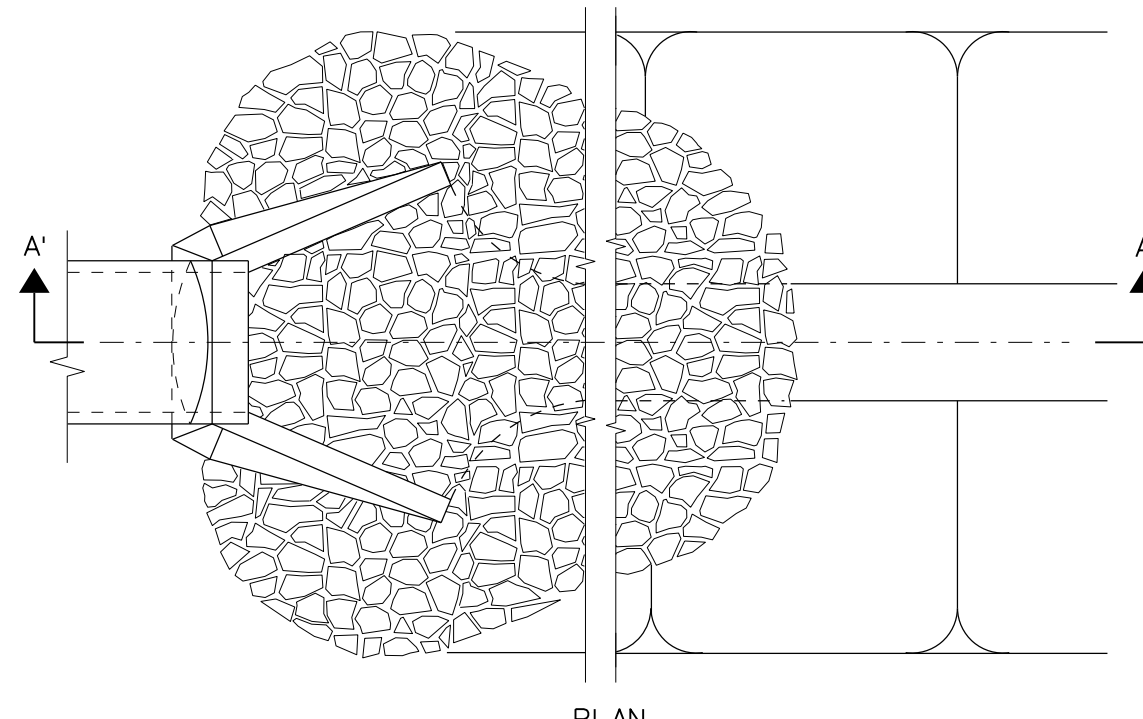
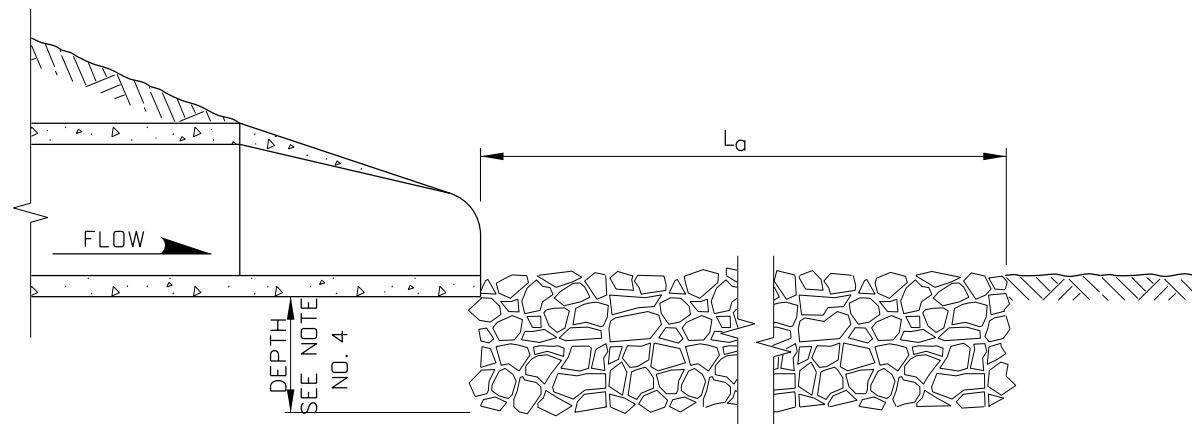


PLAN

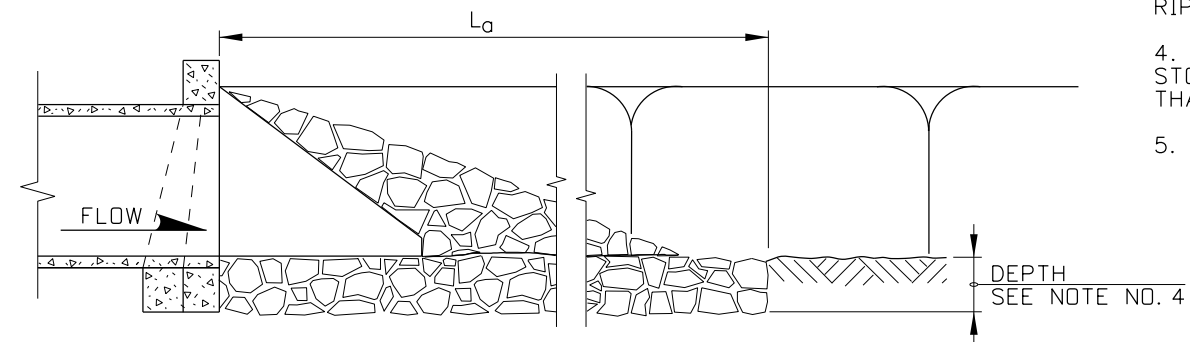


PLAN



SECTION A-A

PIPE OUTLET TO FLAT AREA



SECTION A'-A'

PIPE OUTLET TO STABILIZED CHANNEL

NOTES

1. THE GENERAL NOTES FOR ALL P-2 SERIES STANDARD DRAWINGS (PERMANENT EROSION CONTROL) ARE GIVEN ON STANDARD DRAWING P-2-A (PERMANENT EROSION CONTROL GABIONS & REVET MATTRESSES).

2. THE APRON LINING MAY BE RIPRAP, GROUTED RIPRAP, OR CONCRETE.

3. L_a IS THE LENGTH OF THE RIPRAP APRON.

4. DEPTH = 1.5 TIMES THE MAXIMUM STONE DIAMETER BUT NOT LESS THAN 6 INCHES.

5. NOT TO SCALE.

REVISIONS

NO.	DATE	BY	NO.	DATE	BY	NO.	DATE	BY
1	10-10	KEH						

SCALES SHOWN ARE FOR 11" X 17" PRINTS ONLY

CADD FILE NAME: p2f_1010.dgn

DRAWING DATE: FEBRUARY, 1996

**IDAHO
TRANSPORTATION
DEPARTMENT**



BOISE IDAHO

ORIGINAL SIGNED BY: LOREN THOMAS
ASSISTANT CHIEF ENGINEER (DEVELOPMENT)

ORIGINAL SIGNED BY: TOM COLE
CHIEF ENGINEER

STANDARD DRAWING

**PERMANENT EROSION CONTROL
CULVERT OUTLET PROTECTION**

REQUIRES STD. DWG. P-2-A

English

STANDARD DRAWING NO.

P-2-F

SHEET 1 OF 1

ORIGINAL STORED AT: ITD, Headquarters 3311 West State Boise, Idaho

ORIGINAL SIGNED BY:
KARISSA HARDY
DATE ORIGINAL SIGNED:
OCTOBER 27, 2010