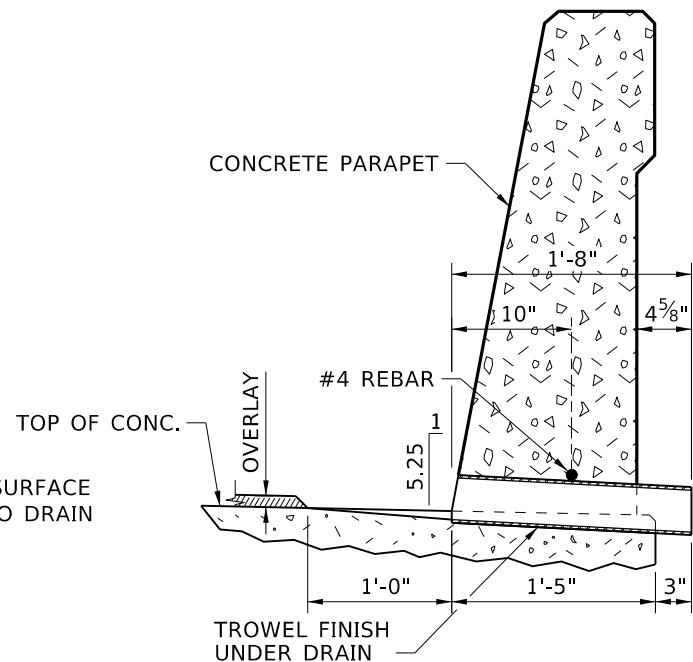
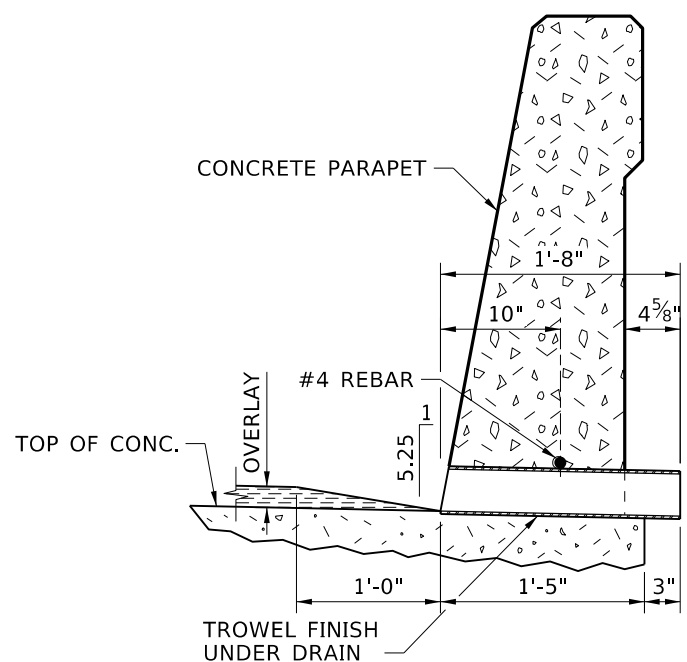


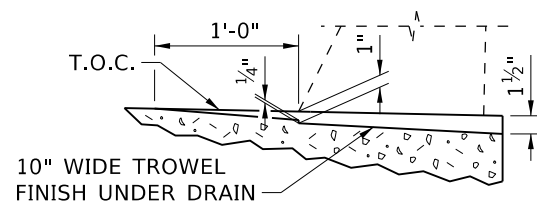
PLAN
3/4" = 1'-0"



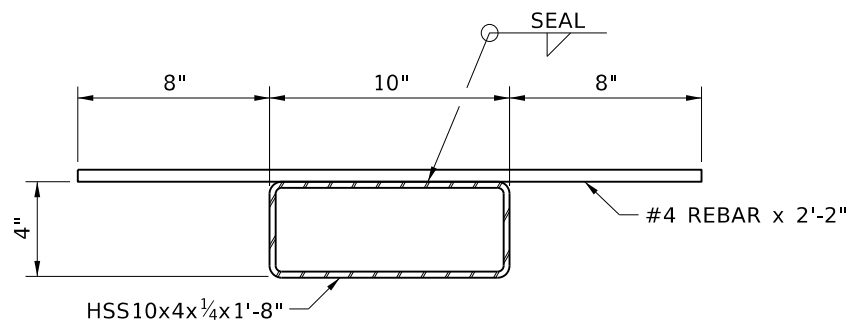
SECTION A-A
(CAST-IN-PLACE SLABS)
3/4" = 1'-0"



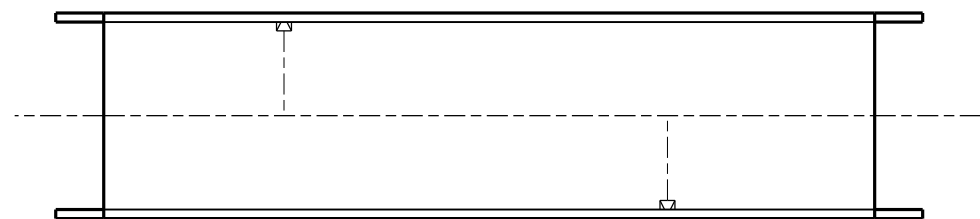
SECTION A-A
(PRECAST SLABS OR BOXES)
3/4" = 1'-0"



TROWEL FINISH DETAIL
3/4" = 1'-0"



SECTION B-B
1 1/2" = 1'-0"



LOCATION
NTS

NOTES

1. HOT DIP GALVANIZED DRAIN ASSEMBLY AFTER FABRICATION IN ACCORDANCE WITH ASTM A123.
2. ADJUST ANY BARS THAT CONFLICT WITH DRAIN.
3. PROVIDE STRUCTURAL STEEL TUBING IN ACCORDANCE WITH ASTM A500 OR A501.
4. PROVIDING AND INSTALLING THE DRAIN ASSEMBLY IS INCIDENTAL TO PAY ITEM 502-430A.

REVISIONS			
NO.	DATE	BY	DESCRIPTION

DESIGNED
DESIGN CHECKED
DETAILED
DWG. CHECKED
CORRECTIONS

SCALES SHOWN ARE FOR 11" X 17" PRINTS ONLY
CADD FILE NAME Standards\Bridg Standard Drawings B02_2C.DGN
DRAWING DATE: DEC 2024

IDAHO TRANSPORTATION DEPARTMENT

YOUR Safety→YOUR Mobility→YOUR Economic Opportunity

APPROVED BY:
BRIDGE ENGINEER **MICHAEL T. JOHNSON** DATE: _____

ENGLISH
PROJECT NO.

TYPE 3 BRIDGE DRAIN THRU PARAPET
FOR VOIDED SLAB, BOX BEAM, AND DECK BULB TEE TYPE STRUCTURES, SINGLE SLOPE PARAPET
BRIDGE LRFD DESIGN MANUAL, B2.2C

BRIDGE PLANS	
BRIDGE KEY NO.	
COUNTY	KEY NO.
BRIDGE DWG. NO.	SHEET OF