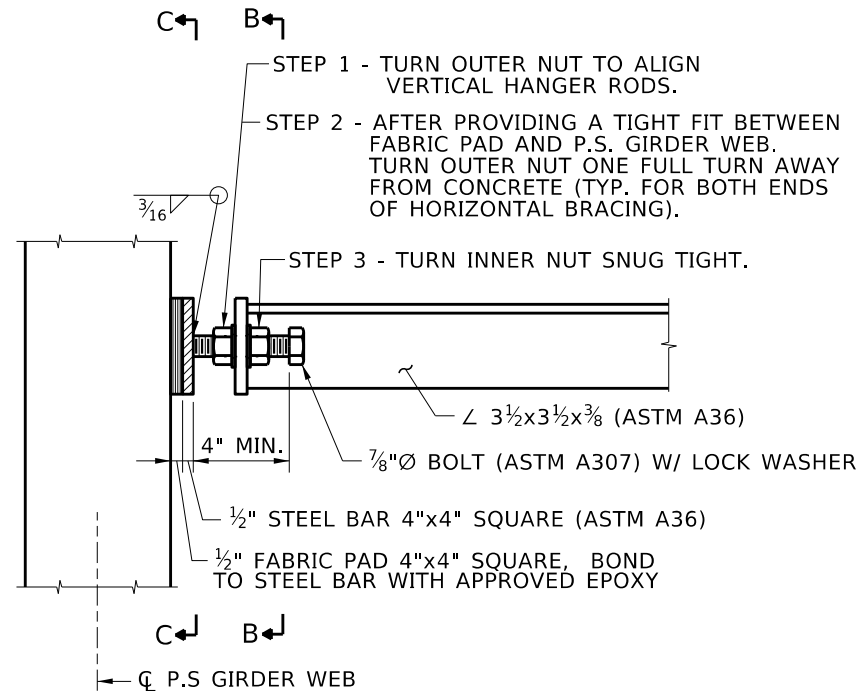
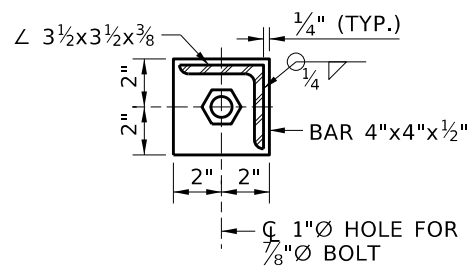


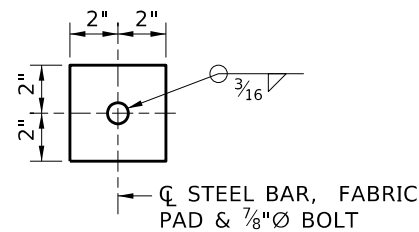
**HANGER UTILITY SUPPORT  
WATER AND SEWER LINES**  
3/8" = 1'-0"



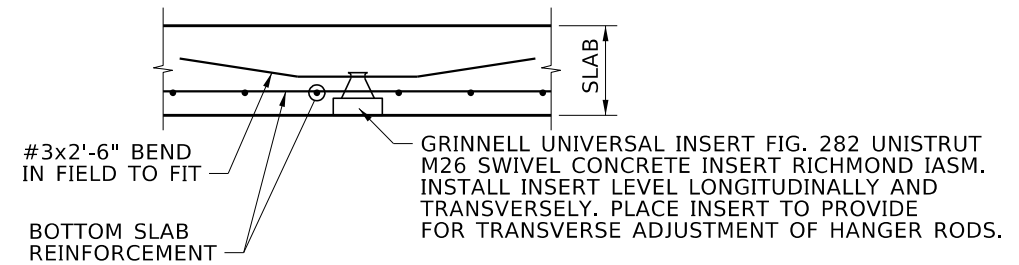
**DETAIL A**  
3/8" = 1'-0"



**SECTION B-B**  
1 1/2" = 1'-0"



**SECTION C-C**  
1 1/2" = 1'-0"



**DETAIL D**  
NTS

**NOTES**

1. GALVANIZE MATERIALS AFTER FABRICATION IN ACCORDANCE WITH ASTM A123 OR ASTM A153 EXCEPT PIPE ROLL.
2. PAINT ROLLERS WITH 3 COATS OF APPROVED GALVANIZING REPAIR PAINT.
3. CLEAN AND PAINT ANY PAINTED SURFACES DAMAGED DURING CONSTRUCTION AS DIRECTED REMOVE ANY PAINT SPLATTER FROM THE BRIDGE.
4. PROVIDE FABRIC PADS COMPOSED OF MULTIPLE LAYERS OF DUCK, IMPREGNATED AND BOUND WITH HIGH QUALITY OIL RESISTANT SYNTHETIC RUBBER, COMPRESSED INTO RESILIENT PADS IN ACCORDANCE WITH THE LATEST EDITION OF MIL C 882. PROVIDE THE NUMBER OF PLYS TO PRODUCE THE SPECIFIED THICKNESS, AFTER COMPRESSION AND VULCANIZATION.
5. PROVIDE PRE-FORMED FABRIC PADS WITH A SHORE A HARDNESS OF 90 ± 5 IN ACCORDANCE WITH ASTM D2240.
6. PRE-FORMED FABRIC PADS WILL BE ACCEPTED BASED ON THE MANUFACTURER'S CERTIFICATE OF COMPLIANCE THAT THE MATERIALS FURNISHED CONFORMS TO THE PLAN AND SPECIFICATIONS.

REVISIONS			
NO.	DATE	BY	DESCRIPTION

DESIGNED
DESIGN CHECKED
DETAILED
DWG. CHECKED
CORRECTIONS

SCALES SHOWN ARE FOR 11" X 17" PRINTS ONLY
CADD FILE NAME Standards\Bridg Standard Drawings\B02_4A.DGN
DRAWING DATE: OCT 2023

**IDAHO  
TRANSPORTATION  
DEPARTMENT**

YOUR Safety → YOUR Mobility → YOUR Economic Opportunity

APPROVED BY:  
BRIDGE ENGINEER **MICHAEL T. JOHNSON** DATE: \_\_\_\_\_

<b>ENGLISH</b>
PROJECT NO.

<b>UTILITY HANGER FOR PRESTRESSED GIRDERS</b>
NEW CONSTRUCTION (WATER, SEWER AND GAS) BRIDGE LRFD DESIGN MANUAL, B2.4A

<b>BRIDGE PLANS</b>	
BRIDGE KEY NO.	
COUNTY	KEY NO.
BRIDGE DWG. NO.	SHEET OF