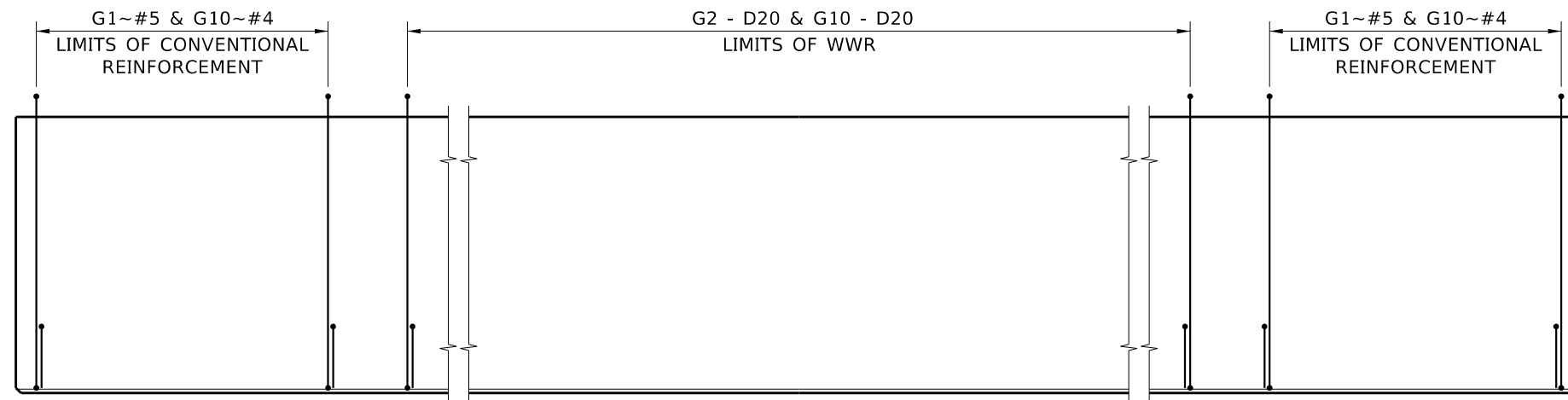
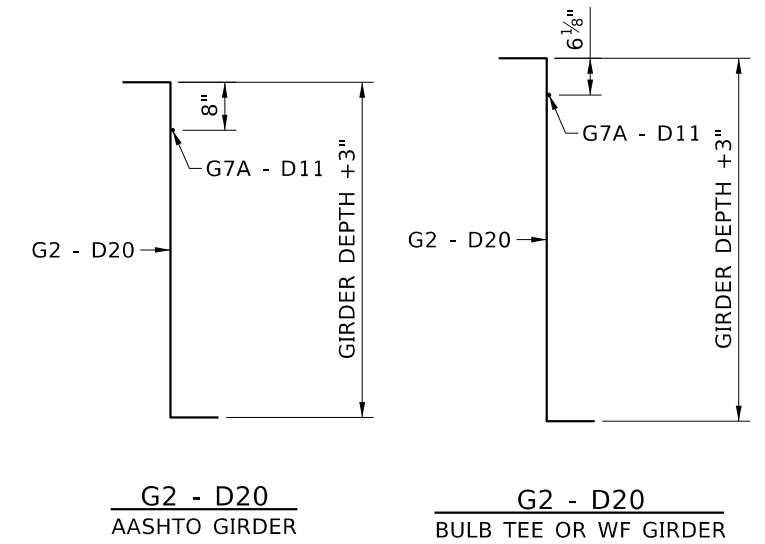


NOTES

1. PROVIDE DEFORMED WELDED WIRE REINFORCEMENT (WWR) IN ACCORDANCE WITH AASHTO M336.
2. PROVIDE WWR OF THE SAME SIZE AND SPACING FOR G2~#4, G10~#4, G7A~3 AND G11~#3 CONVENTIONAL REINFORCEMENT.

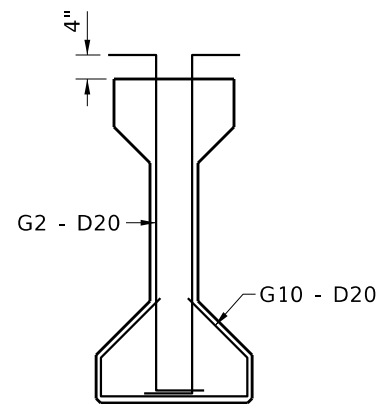


ELEVATION
NTS

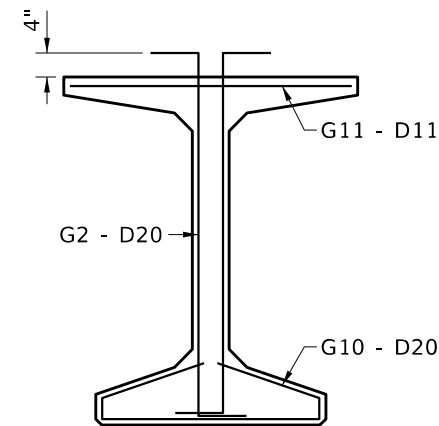


G2 - D20
AASHTO GIRDER

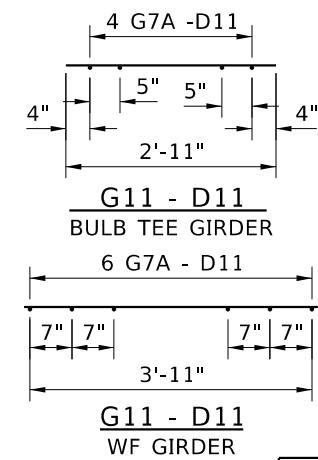
G2 - D20
BULB TEE OR WF GIRDER



AASHTO GIRDERS
NTS



BULB TEE OR WF GIRDERS
NTS



G11 - D11
WF GIRDER

REVISIONS			
NO.	DATE	BY	DESCRIPTION
▲			
▲			
▲			
▲			

DESIGNED
DESIGN CHECKED
DETAILED
DWG. CHECKED
CORRECTIONS

SCALES SHOWN ARE FOR 11" X 17" PRINTS ONLY
CADD FILE NAME Standards/Bridge Standard Drawings B05_3R.DGN
DRAWING DATE: OCT 2023

IDAHO TRANSPORTATION DEPARTMENT

YOUR Safety→YOUR Mobility→YOUR Economic Opportunity

APPROVED BY: BRIDGE ENGINEER **MICHAEL T. JOHNSON** DATE: _____

ENGLISH
PROJECT NO.

OPTIONAL PRESTRESSED GIRDER WWR DETAILS
BRIDGE LRFD DESIGN MANUAL, B5.3R

BRIDGE PLANS	
BRIDGE KEY NO.	
COUNTY	KEY NO.
BRIDGE DWG. NO.	SHEET OF