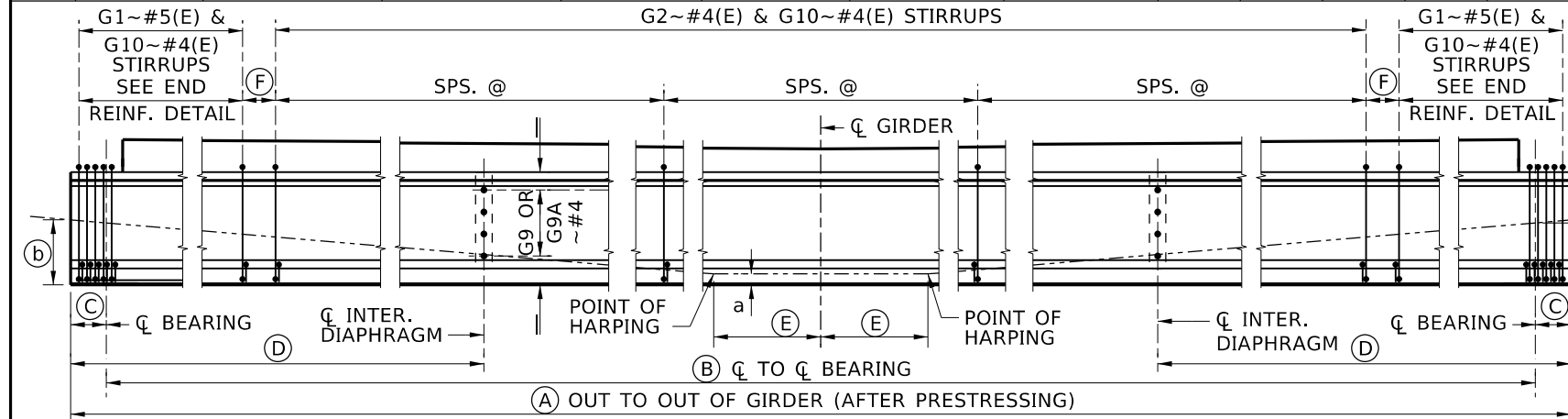


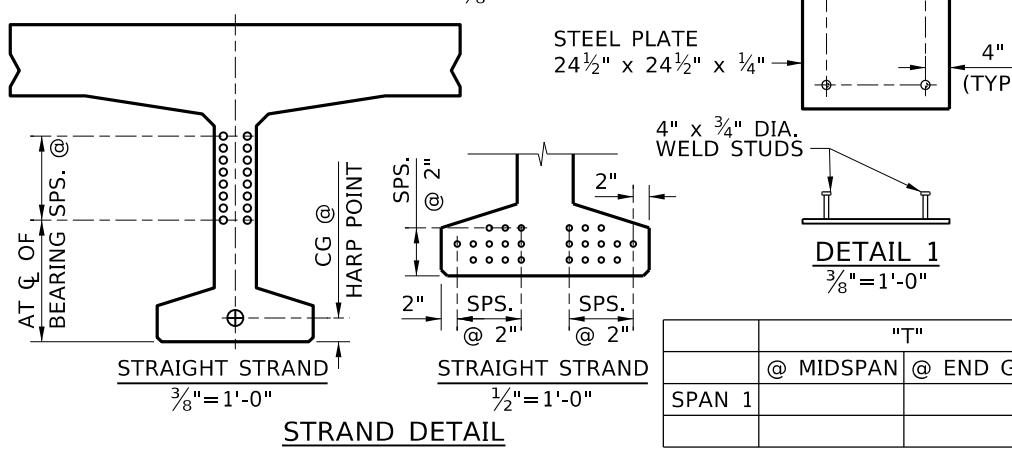
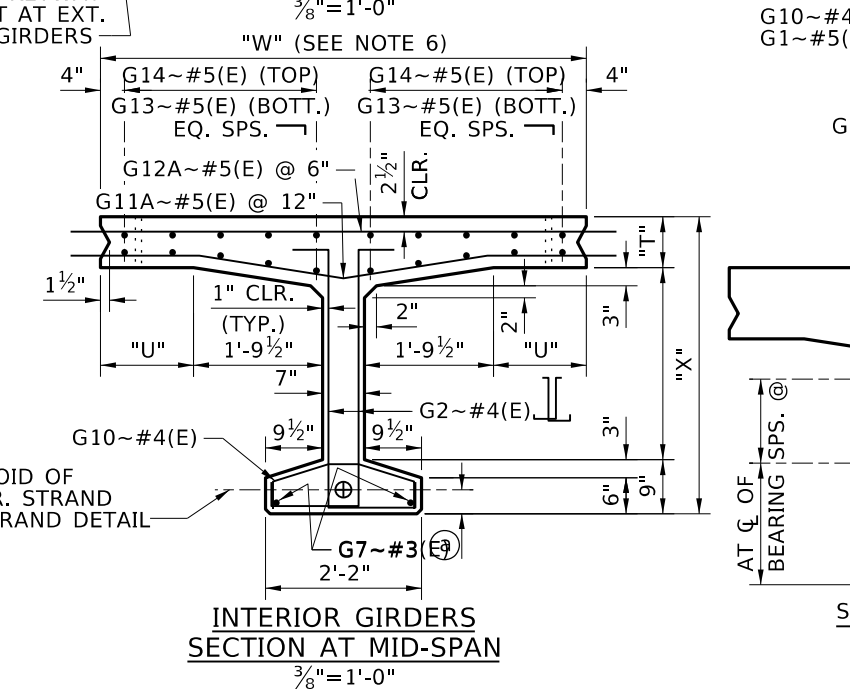
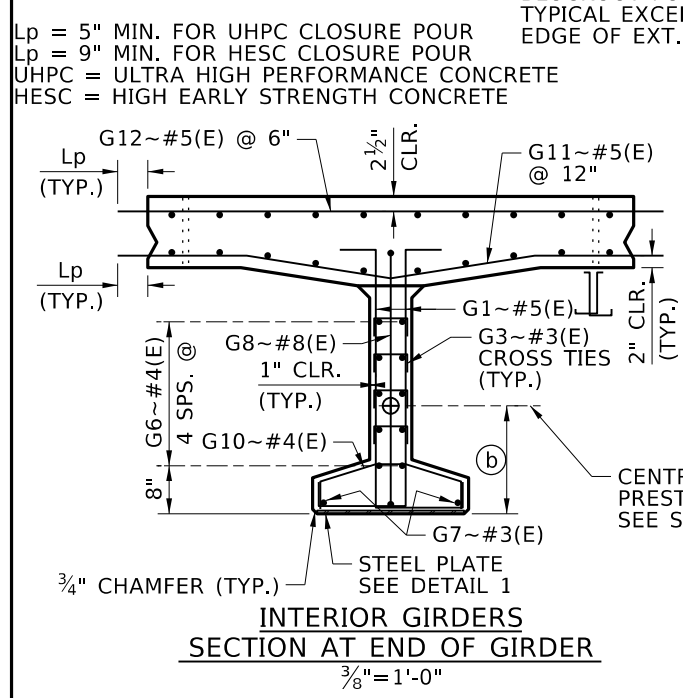
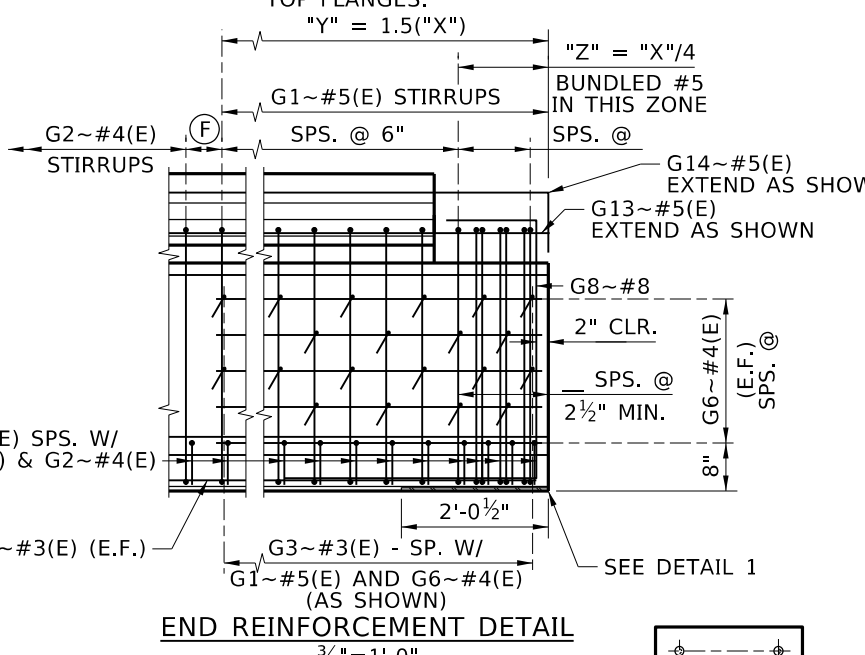
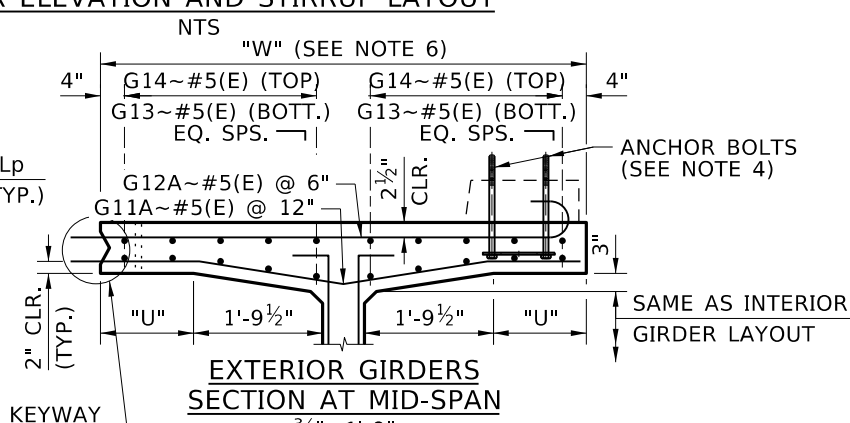
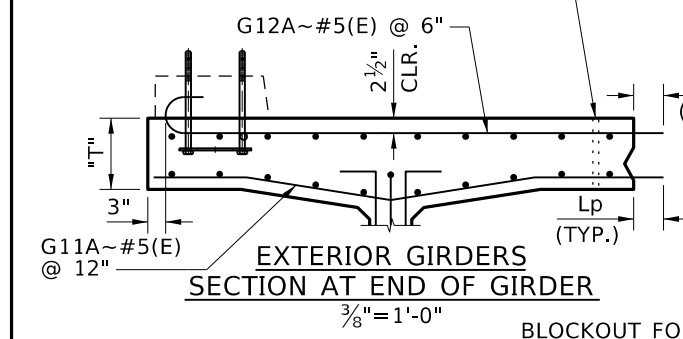
PRESTRESSED GIRDER SCHEDULE

GIRDERS		PRESTRESS FORCE ~ KIPS		PRESTRESS LOSSES ~ KSI		CONCRETE STRENGTH ~ KSI		GIRDER DIMENSIONS						END DETAIL		C.G. OF STRAND			
NO.	LOCATION	INITIAL BEFORE LOSSES	FINAL AFTER LOSSES	IMMEDIATE LOSSES	FINAL TOTAL LOSSES	AT RELEASE f'ci	AT 28 DAYS f'c	(A)	(B)	(C)		(D)		(E)	(F)	LEFT	RIGHT	(b)	(a)
										LEFT	RIGHT	LEFT	RIGHT						



- NOTES**
- DIMENSIONS TO STIRRUPS AND DOWEL BARS ARE GIVEN AT C OF GIRDER.
 - BEND DETAILS IN ACCORDANCE WITH LATEST ACI STANDARD PRACTICE.
 - SEE TYPICAL BULB TEE SECTION AND DETAILS SHEETS FOR ADDITIONAL GIRDER NOTES AND DETAILS.
 - CAST ANCHOR BOLTS INTO EXTERIOR GIRDERS. SUBMIT RAIL SHOP DRAWINGS FOR APPROVAL PRIOR TO PREPARATION OF GIRDER SHOP DRAWINGS.
 - FOR CURB STEEL SEE SHEET _____. SUBMIT FALSE WORK DETAILS FOR GIRDER CLOSURE POUR GROUT KEY BEFORE PREPARATION OF GIRDER SHOP DRAWINGS.
 - EXACT WIDTH OF GIRDER FLANGE WILL BE SLIGHTLY LESS THAN NORMAL WIDTH DUE TO GAP BETWEEN TOP FLANGES.

OPTIONAL SLEEVE/INSERT FOR EQUALIZATION DEVICE AND CLOSURE POUR FORM SUPPORTS, TYPICAL INTERIOR AND EXTERIOR GIRDERS.



REINFORCEMENT DIAGRAM				
AASHTO M31 GRADE 60 TYPE S				
MARK	SIZE	GRADE	SKETCH	
G1*	#5(E)	60		
G2*	#4(E)	60		
G3*	#3(E)	60		
G5	#6(E)	60		
G6	#4(E)	60		
G7	#3(E)	60		
G8*	#8(E)	60		
G9	#4(E)	60		
G9A	#4(E)	60		
G10	#4(E)	60		
G11	#5(E)	60		
G11A	#5(E)	60		
G12	#5(E)	60		
G12A*	#5(E)	60		
G13	#5(E)	60		
G14**	#5(E)	60		

* STIRRUP AND TIE HOOK BEND DIMENSIONS. STIRRUPS AND TIES MUST HAVE A MINIMUM 1" COVER OUTSIDE OF BARS.
 ** HOOKS AT ABUTMENT ENDS ONLY FOR JOINTS OR DISCONTINUITIES IN THE PARAPET, BUNDLE A #4(E) WITH THE G12A BARS FOR A DISTANCE EQUAL TO 8' FROM THE JOINT/DISCONTINUITY.
 *** GIRDER WEIGHT..... LB/FT

REVISIONS		
NO.	DATE	DESCRIPTION

DESIGNED: []
 DESIGN CHECKED: []
 DETAILED: []
 DWG. CHECKED: []
 CORRECTIONS: []

SCALES SHOWN ARE FOR 11" X 17" PRINTS ONLY
 CADD FILE NAME: Standards/Bridge Standard Drawings/B05_4E.DGN
 DRAWING DATE: DEC 2024

IDAHO TRANSPORTATION DEPARTMENT
 YOUR Safety → YOUR Mobility → YOUR Economic Opportunity

APPROVED BY: BRIDGE ENGINEER MICHAEL T. JOHNSON DATE: []

ENGLISH
 PROJECT NO. []

PRESTRESSED DECK BULB TEE GIRDER

STATE SYSTEM
 BRIDGE LRFD DESIGN MANUAL B5.4E

BRIDGE PLANS			
BRIDGE KEY NO.			
COUNTY		KEY NO.	
BRIDGE DWG. NO.	SHEET	OF	