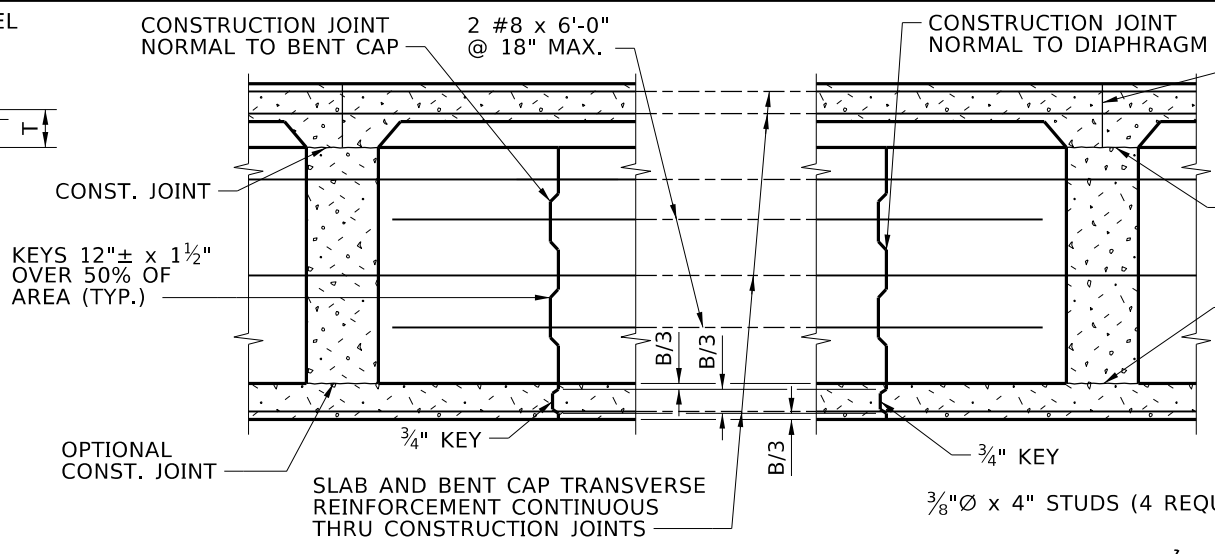
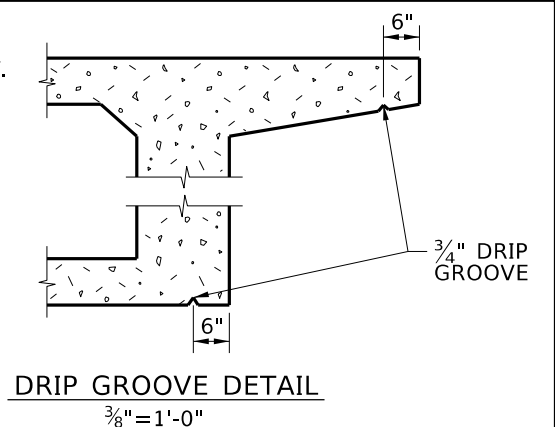


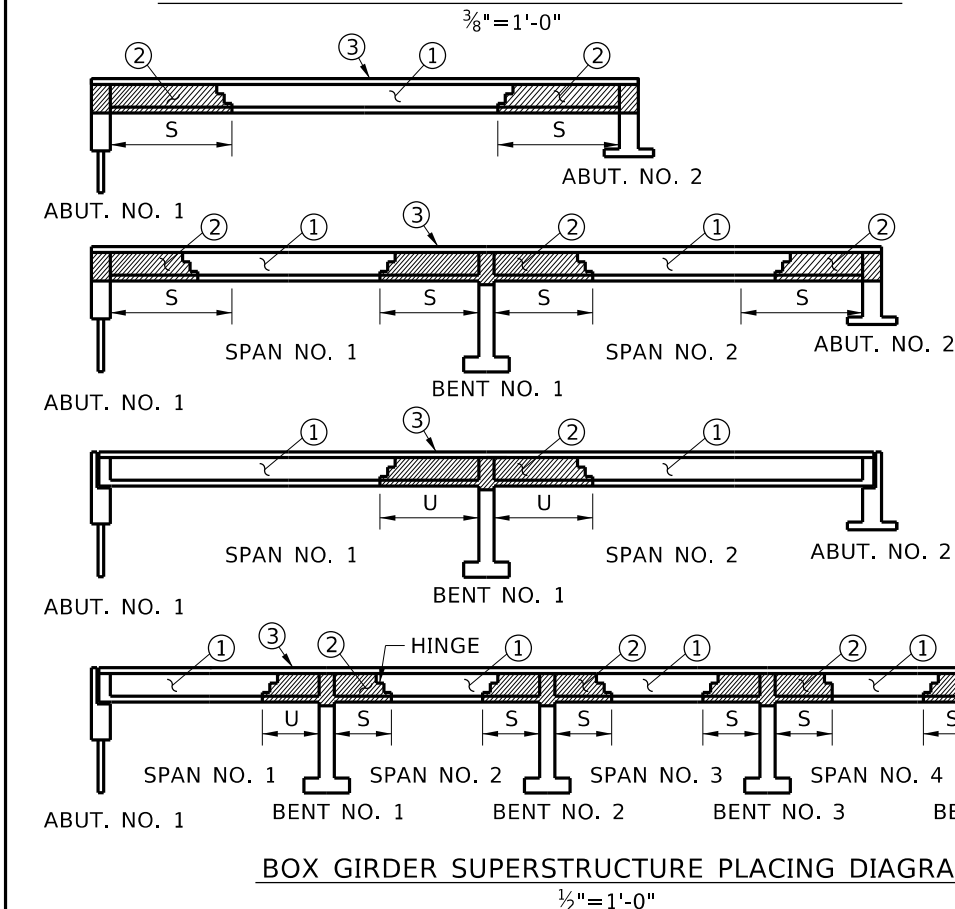
TRANSVERSE GIRDER CONSTRUCTION JOINT DETAIL



LONGITUDINAL CONSTRUCTION JOINTS

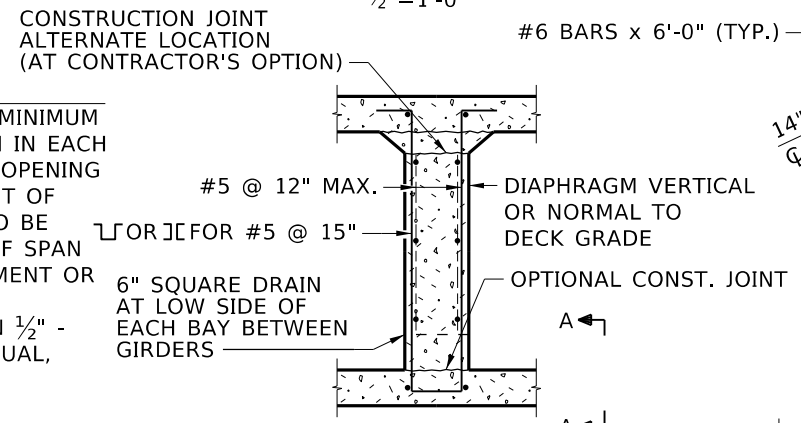


DRIP GROOVE DETAIL

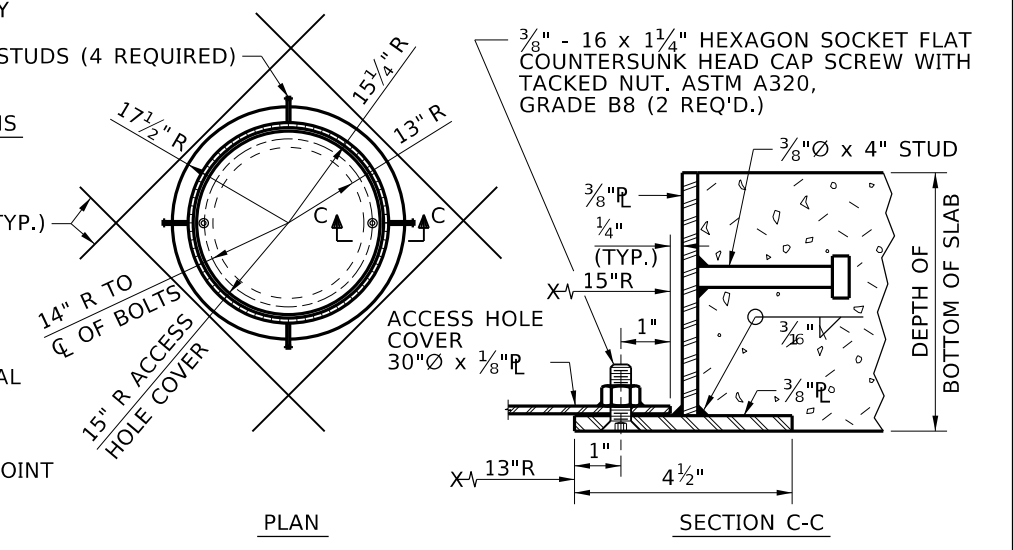


BOX GIRDER SUPERSTRUCTURE PLACING DIAGRAM

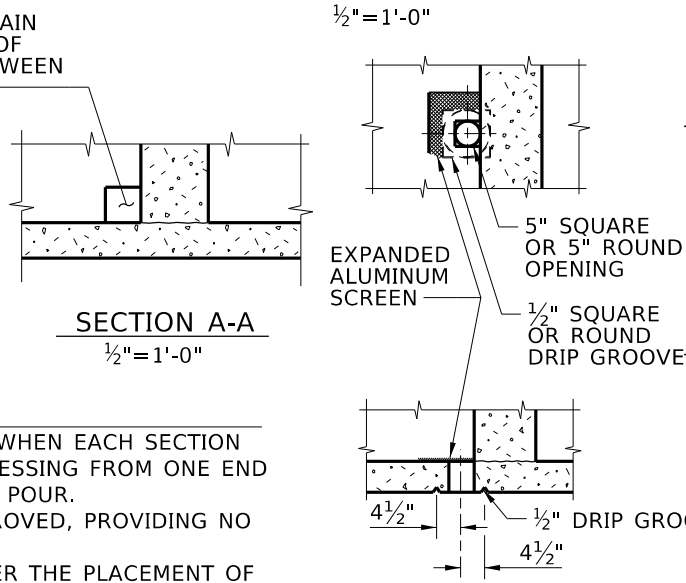
NOTE:
5" OPENING IN LOWER SLAB. MINIMUM OF TWO OPENINGS PER SPAN IN EACH BAY BETWEEN GIRDERS. ONE OPENING TO BE LOCATED AT LOW POINT OF SPAN AND OTHER OPENING TO BE LOCATED AT OPPOSITE END OF SPAN @ 1'-6" FROM FACE OF ABUTMENT OR BENT. COVER OPENINGS WITH EXPANDED ALUMINUM SCREEN 1/2" - .051 AMICO OR APPROVED EQUAL, SECURELY ATTACHED WITH GALVANIZED FASTENERS.



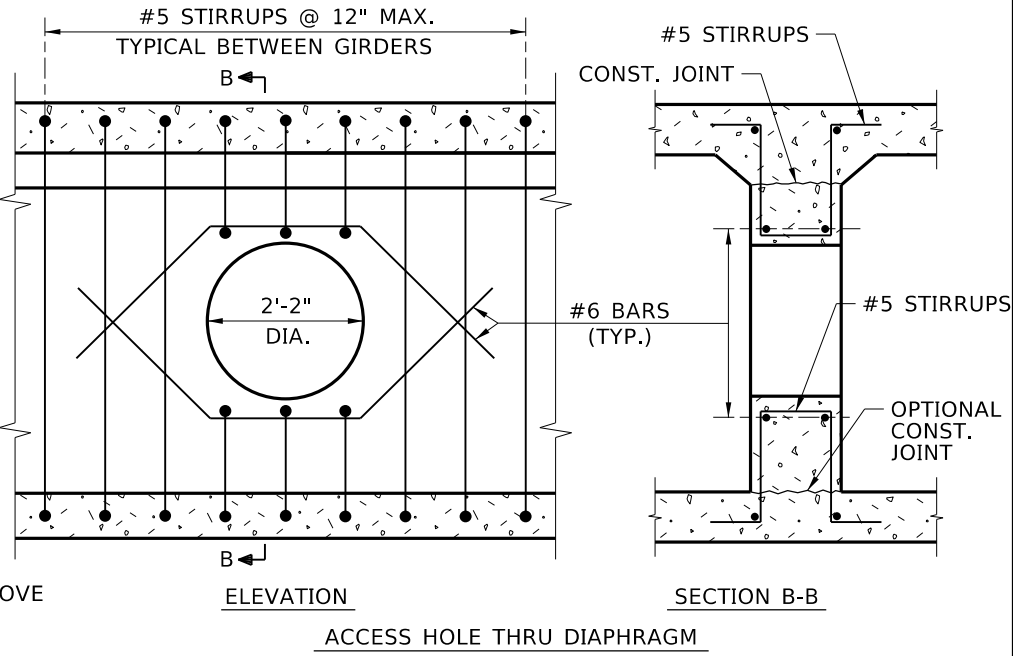
INTERMEDIATE DIAPHRAGM SECTION



ACCESS HOLE COVER



BOTTOM SLAB OPENINGS



INSPECTION ACCESS HOLE DETAILS

- NOTE
- NUMBERS ① AND ② INDICATE THE SEQUENCE OF PLACING BOTTOM FLANGE AND GIRDER STEM CONCRETE WHEN EACH SECTION CONSTITUTES A SEPARATE POUR. ① AND ② SECTIONS MAY BE PLACED IN ONE CONTINUOUS POUR, PROGRESSING FROM ONE END PROVIDING ① SECTIONS ARE PLACED ON BOTH SIDES OF THE ② SECTIONS THAT ARE PLACED DURING THIS POUR.
 - PLACE TOP SLAB CONCRETE ③ SEPARATELY FROM ① AND ②. PLACE ③ CONTINUOUSLY OR IN PARTS AS APPROVED, PROVIDING NO TRANSVERSE CONSTRUCTION JOINTS FALL WITHIN THE ② AREAS.
 - PLACEMENT OF THE NEXT SECTION MUST NOT COMMENCE UNTIL AT LEAST 48 HOURS HAVE ELAPSED AFTER THE PLACEMENT OF ADJACENT SECTIONS.
 - S = 1/2 SPAN LENGTH; U = 1/4 SPAN LENGTH.
 - NO DEVIATIONS FROM THE ABOVE NOTES ALLOWED UNLESS APPROVED.

REVISIONS			
NO.	DATE	BY	DESCRIPTION

DESIGNED	SCALES SHOWN ARE FOR 11" X 17" PRINTS ONLY
DESIGN CHECKED	CADD FILE NAME
DETAILED	Standards/Bridge Standard Drawings
DWG. CHECKED	B05_7A.DGN
CORRECTIONS	DRAWING DATE: OCT 2023

IDAHO TRANSPORTATION DEPARTMENT

YOUR Safety → YOUR Mobility → YOUR Economic Opportunity

APPROVED BY: BRIDGE ENGINEER **MICHAEL T. JOHNSON** DATE: _____

ENGLISH

PROJECT NO. _____

BOX GIRDER DETAILS

BRIDGE LRFD DESIGN MANUAL, B5.7A

BRIDGE PLANS	
BRIDGE KEY NO.	
COUNTY	KEY NO.
BRIDGE DWG. NO.	SHEET OF