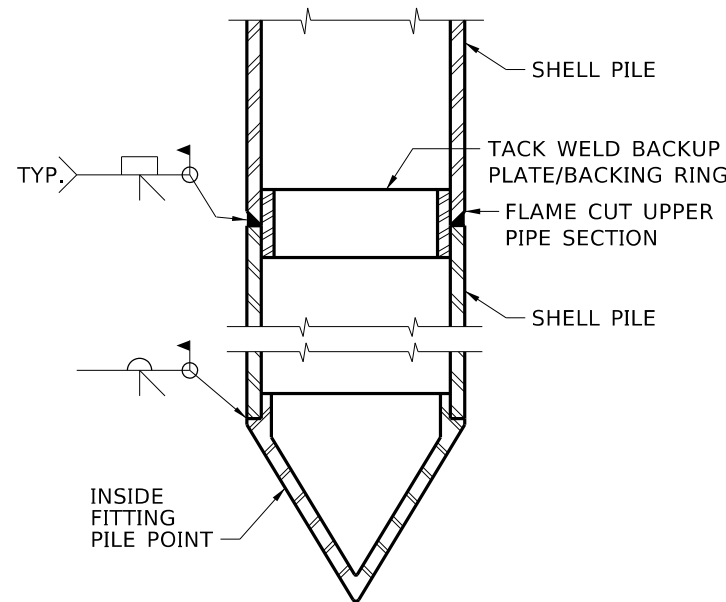


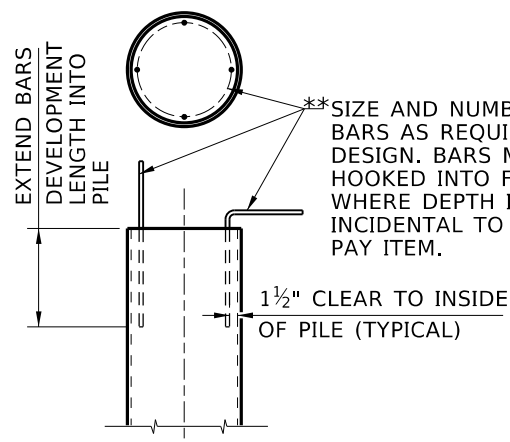
SHELL PILE SPLICE DETAIL
NTS



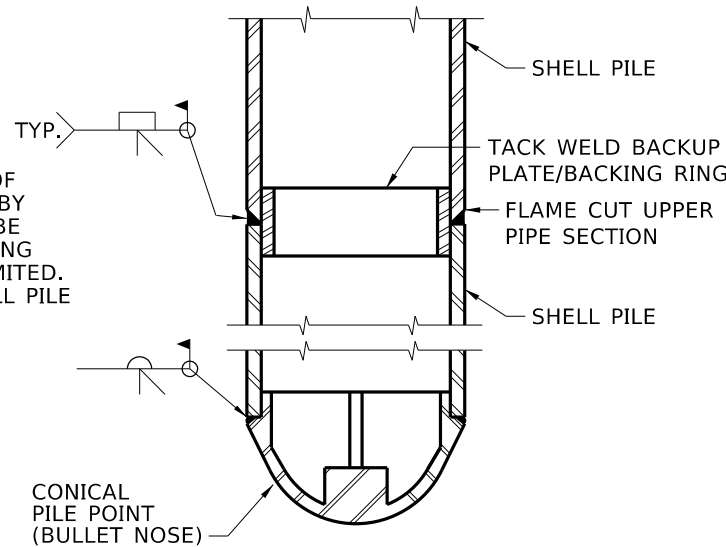
SHELL PILE SPLICE DETAIL
NTS

NOTE TO DESIGNER

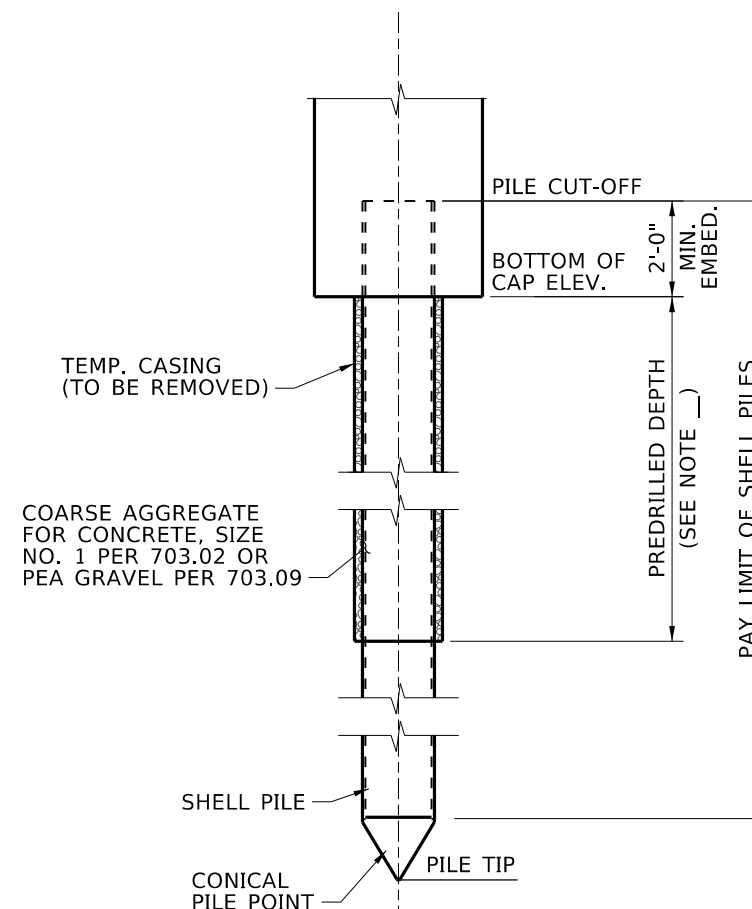
**LRFD ARTICLE 5.11.3.2.1 REQUIRES TENSION CONNECTION FOR STRUCTURES IN SEISMIC ZONE 2 OR GREATER. MINIMUM UPLIFT FORCE MUST NOT BE TAKEN LESS THAN 10 PERCENT OF THE FACTORED AXIAL COMPRESSIVE RESISTANCE OF THE PILE.



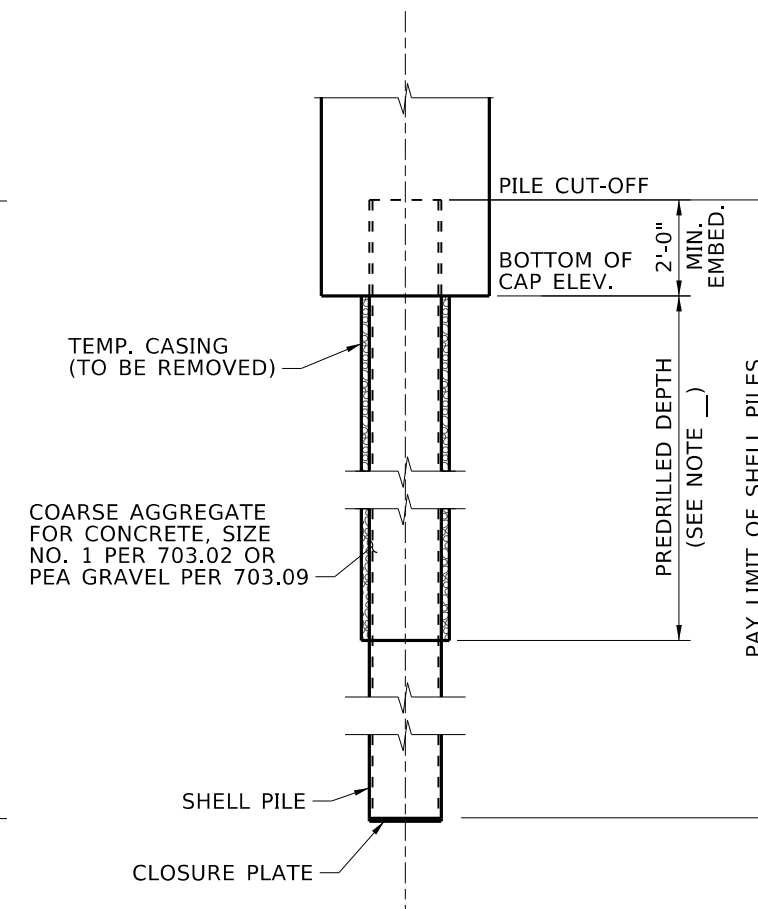
SHELL PILE TENSION CONNECTION
NTS



SHELL PILE SPLICE DETAIL
NTS



SECTION THROUGH ABUTMENT
NTS



SECTION THROUGH ABUTMENT
NTS

REVISIONS			
NO.	DATE	BY	DESCRIPTION
▲			
▲			
▲			
▲			

DESIGNED
DESIGN CHECKED
DETAILED
DWG. CHECKED
CORRECTIONS

SCALES SHOWN ARE FOR 11" X 17" PRINTS ONLY
CADD FILE NAME Standards/Bridge Standard Drawings B10_4.DGN
DRAWING DATE: DEC 2024

IDAHO TRANSPORTATION DEPARTMENT

YOUR Safety → YOUR Mobility → YOUR Economic Opportunity

APPROVED BY: BRIDGE ENGINEER **MICHAEL T. JOHNSON** DATE: _____

ENGLISH
PROJECT NO.

SHELL PILE DETAILS

BRIDGE LRFD DESIGN MANUAL, B10.4

BRIDGE PLANS	
BRIDGE KEY NO.	
COUNTY	KEY NO.
BRIDGE DWG. NO.	SHEET OF