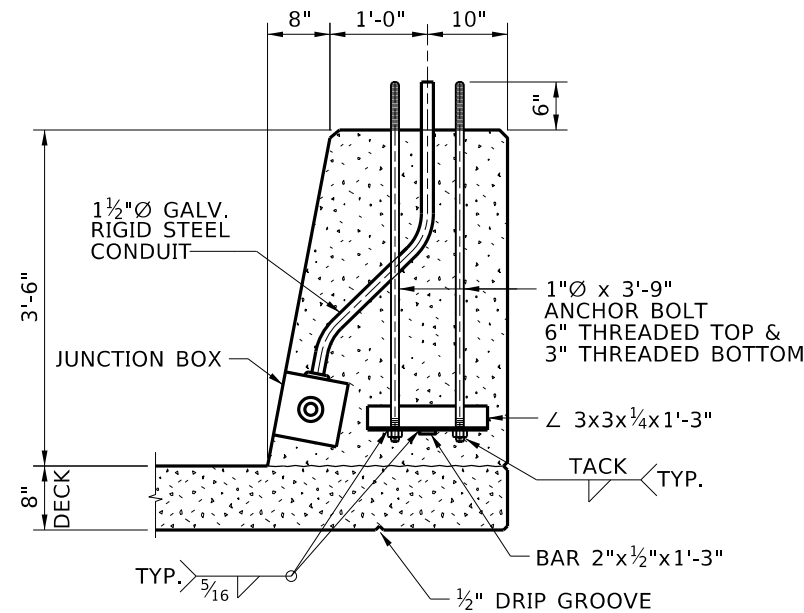


PLAN  
1/2" = 1'-0"

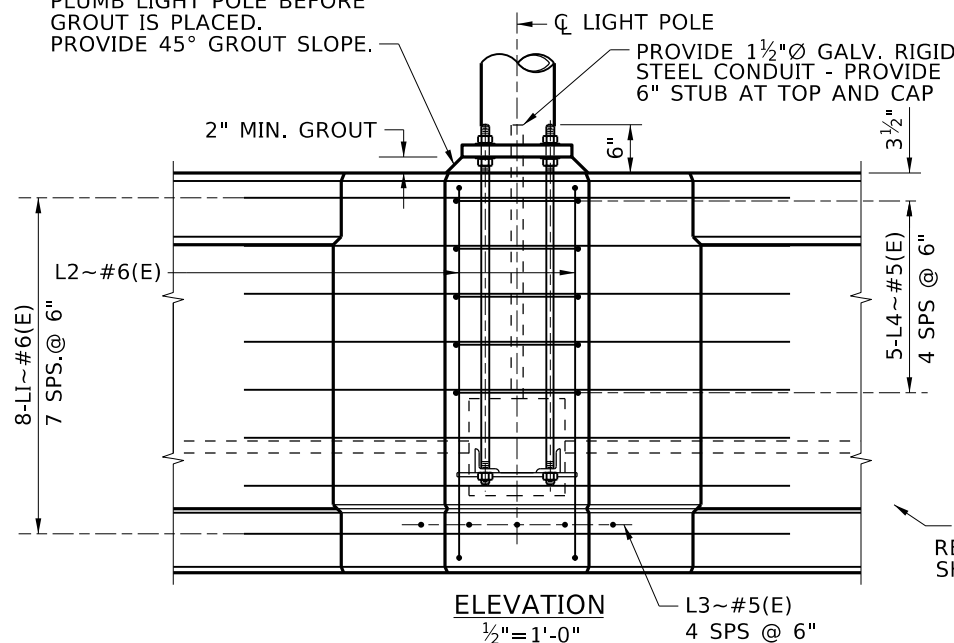


SECTION A-A  
ANCHOR BOLT DETAILS  
1/2" = 1'-0"

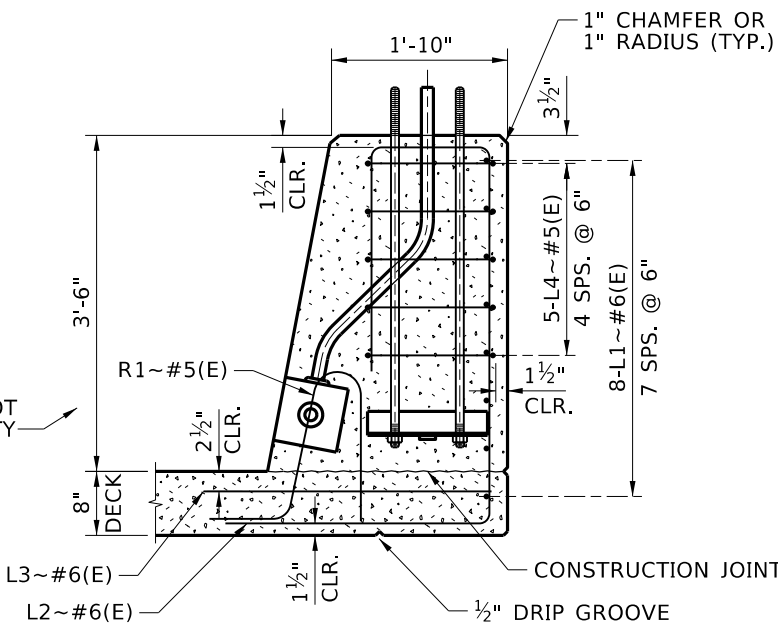
NOTES

1. a. PROVIDE CLASS 40AF CONCRETE.  
b. PROVIDE EPOXY-COATED REINFORCEMENT GRADE 60 TYPE S IN ACCORDANCE WITH 708.02.
2. PROVIDE ANCHOR BOLTS, NUTS, AND WASHERS IN ACCORDANCE WITH ASTM F1554, GRADE 55 AND ARE GALVANIZED IN ACCORDANCE WITH ASTM A153 UNLESS NOTED OTHERWISE. FURNISH EACH ANCHOR BOLT WITH 2 NUTS AND 2 WASHERS AT LIGHT POLE BASE PLATE AND 1 NUT AT EMBEDDED END.
3. PROVIDE ANGLES AND PLATES IN ACCORDANCE WITH ASTM A709 GRADE 36.
4. PROVIDE GROUT IN ACCORDANCE WITH TYPE B CLASS 1 AS SPECIFIED IN 506.03 PARAGRAPH H.
5. SEE CONCRETE PARAPET DRAWING FOR NORMAL PARAPET REINFORCEMENT.
6. THE LOCATION OF LIGHT POLE SUPPORTS MAY BE FIELD ADJUSTED ± 3 FEET TO AVOID CONFLICT.
7. SEE ROADWAY PLANS FOR LIGHT POLE DETAILS. PROVIDING AND INSTALLING LIGHT POLES AND ELECTRICAL ITEMS IS A ROADWAY PAY ITEM.
8. CONCRETE, REINFORCING STEEL, ANCHOR BOLT ASSEMBLIES, AND GROUT FOR LIGHT POLE SUPPORTS ARE INCIDENTAL TO PAY ITEM 502-430A.
9. MAXIMUM MOUNTING HEIGHT IS 50 FEET. MINIMUM ARM LENGTH IS 15 FEET.

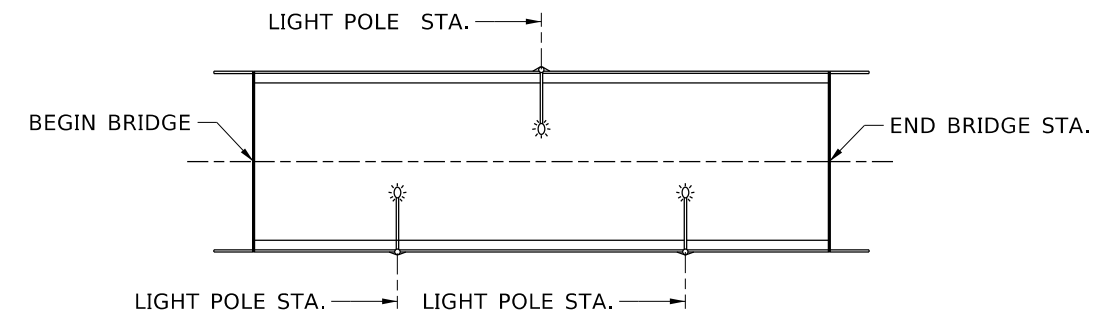
PLUMB LIGHT POLE BEFORE GROUT IS PLACED. PROVIDE 45° GROUT SLOPE.



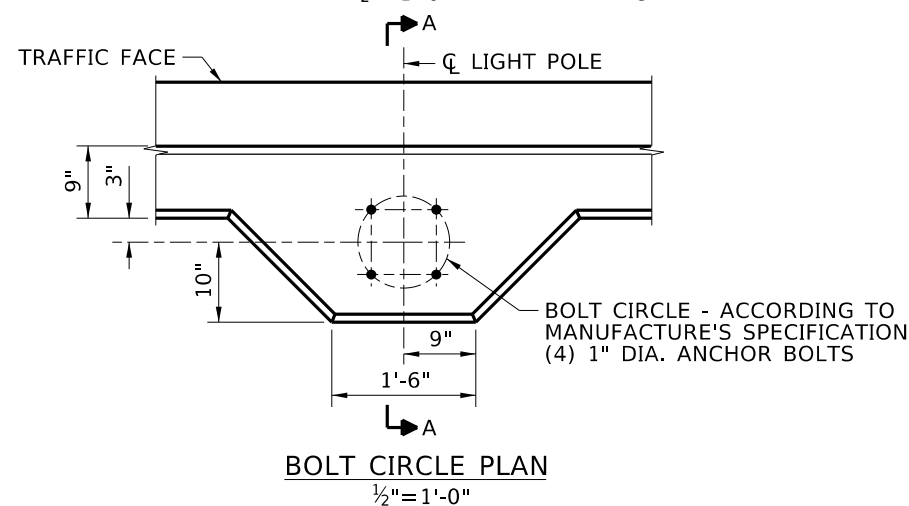
ELEVATION  
1/2" = 1'-0"



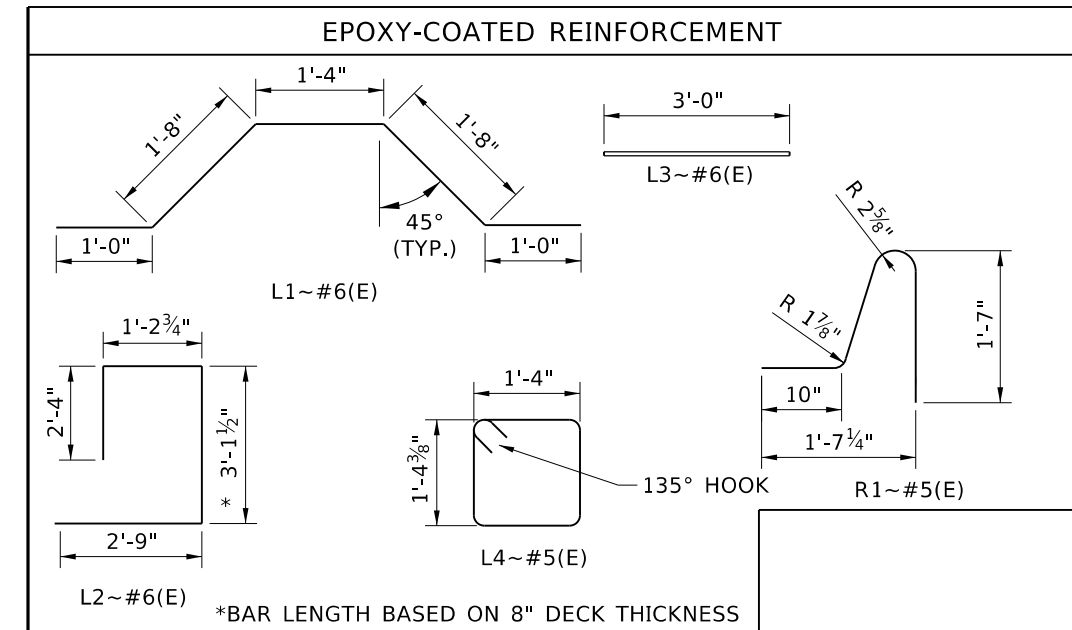
SECTION B-B  
1/2" = 1'-0"



LIGHT POLE LAYOUT  
1/2" = 1'-0"



BOLT CIRCLE PLAN  
1/2" = 1'-0"



\*BAR LENGTH BASED ON 8" DECK THICKNESS

REVISIONS			
NO.	DATE	BY	DESCRIPTION

DESIGNED
DESIGN CHECKED
DETAILED
DWG. CHECKED
CORRECTIONS

SCALES SHOWN ARE FOR 11" X 17" PRINTS ONLY
CADD FILE NAME Standards/Bridge Standard Drawings B13_1C.dgn
DRAWING DATE: DEC 2024

**IDAHO TRANSPORTATION DEPARTMENT**

YOUR Safety → YOUR Mobility → YOUR Economic Opportunity

APPROVED BY: BRIDGE ENGINEER **MICHAEL T. JOHNSON** DATE: \_\_\_\_\_

**ENGLISH**  
PROJECT NO.

42" SINGLE SLOPE CONC. PARAPET LIGHT POLE SUPPORT  
BRIDGE LRFD DESIGN MANUAL, B13.1C

BRIDGE PLANS	
BRIDGE KEY NO.	
COUNTY	KEY NO.
BRIDGE DWG. NO.	SHEET OF