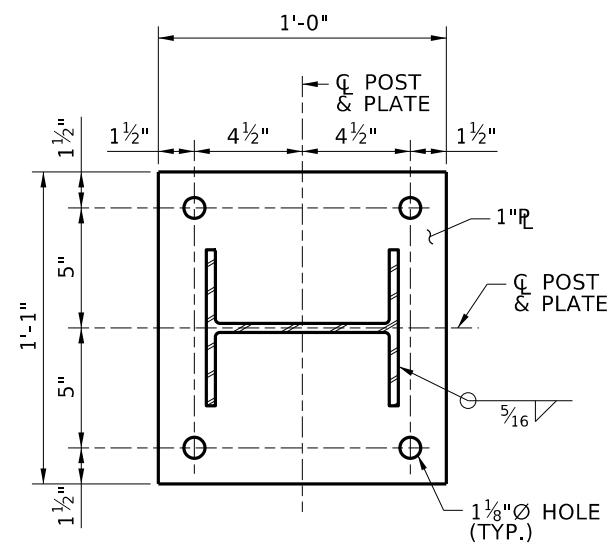
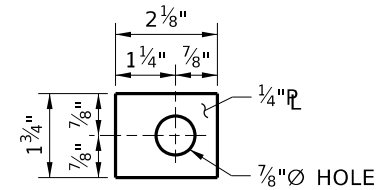


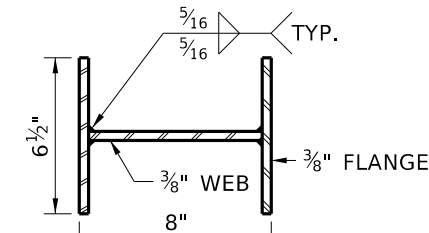
**ANCHOR PLATE DETAIL**  
(ASTM A709 GRADE 36)  
1 1/2"=1'-0"



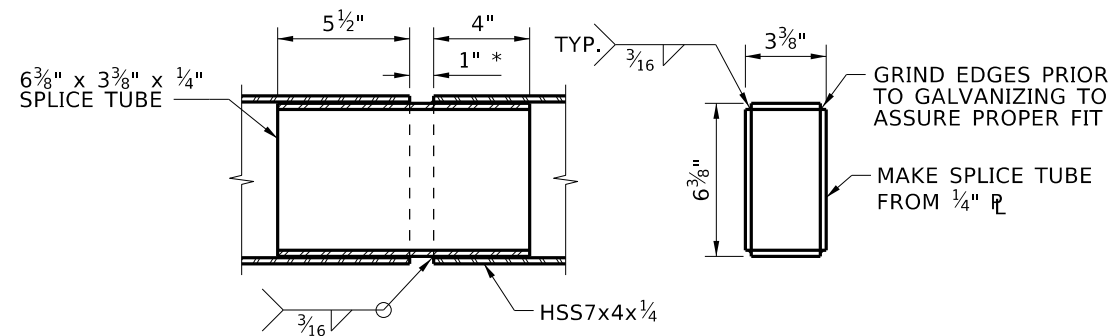
**BASE PLATE DETAIL**  
1 1/2"=1'-0"



**PLATE WASHER "C"**  
(ASTM A709 GRADE 36)  
3"=1'-0"

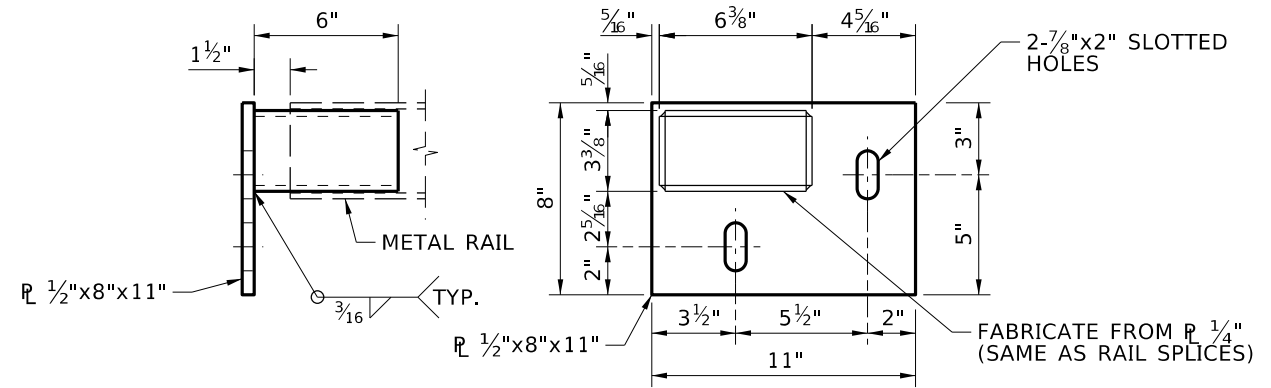


**ALTERNATE POST**  
1 1/2"=1'-0"

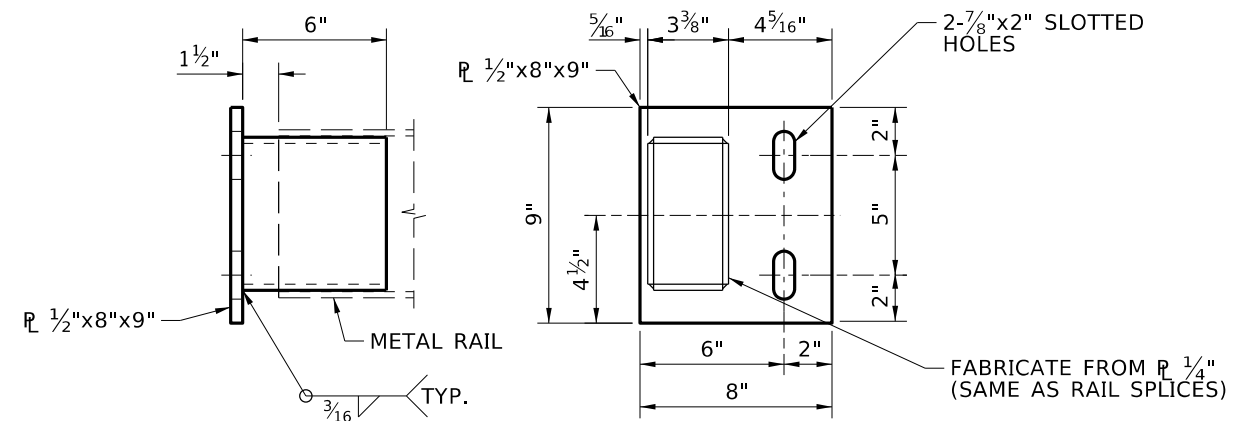


**NOTE TO DESIGNER**  
\* 1" GAP UNLESS NOTED OTHERWISE.  
IF MORE THAN 2" MOVEMENT NEEDED, INCREASE LENGTH OF SPLICE TUBE.  
PROVIDE RAIL SPLICE IN PANEL THAT HAS DECK EXPANSION JOINT.

**RAIL SPLICE DETAILS**  
1 1/2"=1'-0"



**TOP RAIL ATTACHMENT BRACKET**  
(ASTM A709 GRADE 36)  
1 1/2"=1'-0"



**RAIL ATTACHMENT BRACKET**  
(ASTM A709 GRADE 36)  
1 1/2"=1'-0"

REVISIONS			
NO.	DATE	BY	DESCRIPTION

DESIGNED
DESIGN CHECKED
DETAILED
DWG. CHECKED
CORRECTIONS

SCALES SHOWN ARE FOR 11" X 17" PRINTS ONLY
CADD FILE NAME
Standards/Bridge Standard Drawings/813_2F.dgn
DRAWING DATE: DEC 2024

**IDAHO TRANSPORTATION DEPARTMENT**

YOUR Safety → YOUR Mobility → YOUR Economic Opportunity

APPROVED BY: BRIDGE ENGINEER **MICHAEL T. JOHNSON** DATE: \_\_\_\_\_

**ENGLISH**  
PROJECT NO.

**3-TUBE CURB MOUNT RAIL - SHEET 3 OF 3**  
  
WITH END WALL  
WITH OR WITHOUT APPROACH SLAB  
BRIDGE LRFD DESIGN MANUAL, B13.2F

BRIDGE PLANS	
BRIDGE KEY NO.	
COUNTY	KEY NO.
BRIDGE DWG. NO.	SHEET OF