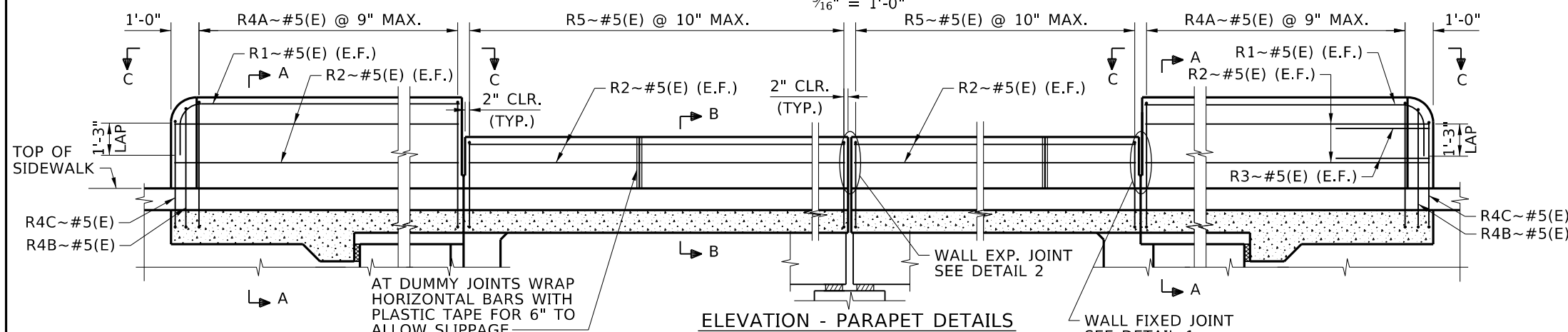
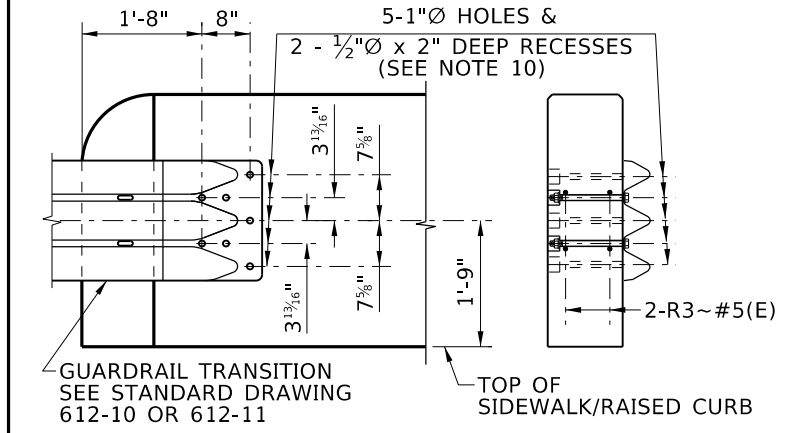


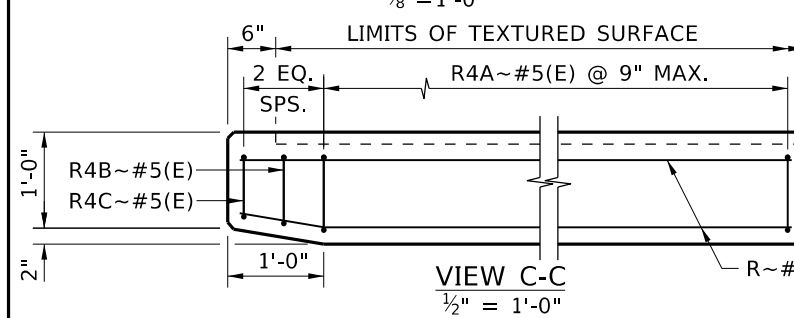
ELEVATION - COMBINATION RAILING



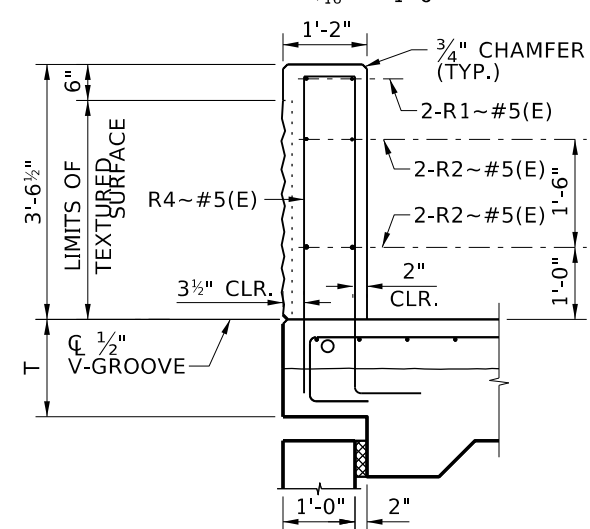
ELEVATION - PARAPET DETAILS



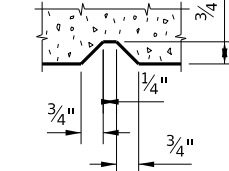
ELEVATION SECTION TERMINAL CONNECTION DETAILS



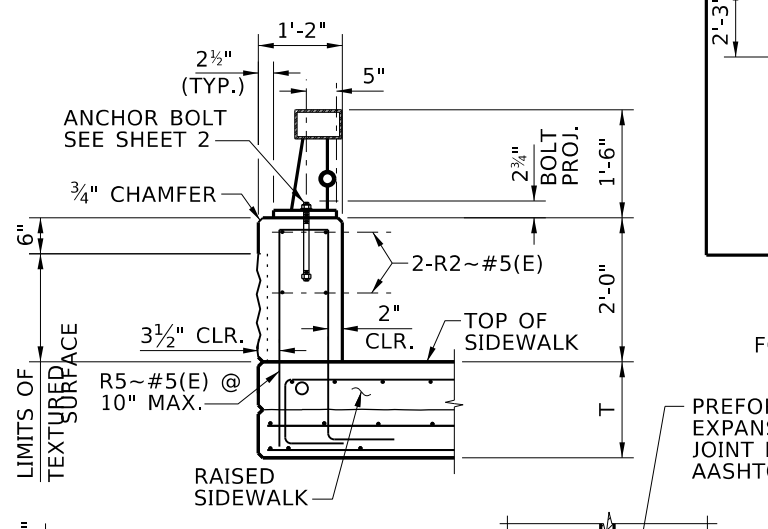
VIEW C-C



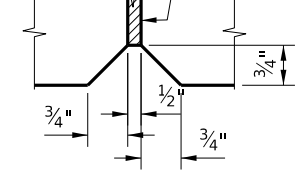
SECTION A-A



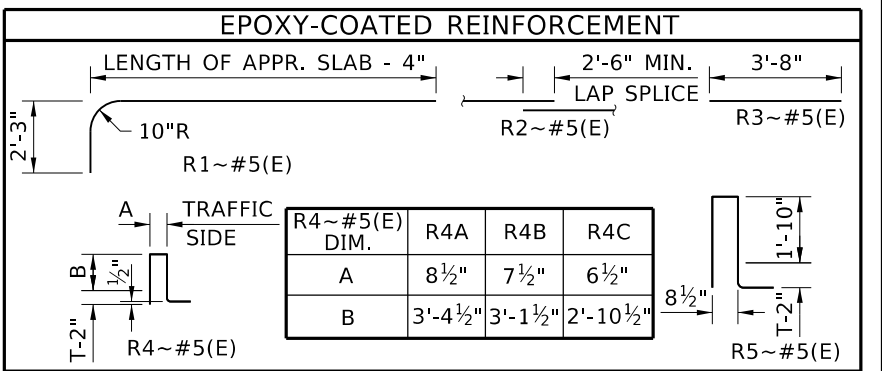
SECTION D-D DUMMY JOINT



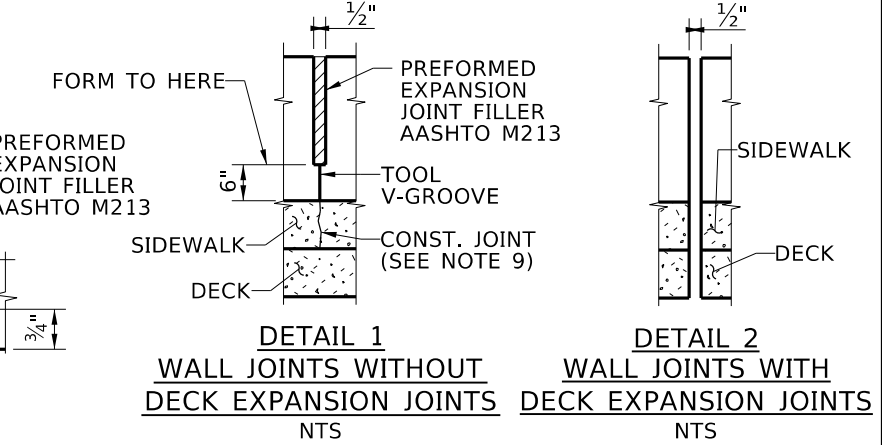
SECTION B-B



SECTION E-E WALL JOINT



EPOXY-COATED REINFORCEMENT



DETAIL 1 WALL JOINTS WITHOUT DECK EXPANSION JOINTS

DETAIL 2 WALL JOINTS WITH DECK EXPANSION JOINTS

- PARAPET NOTES**
1. PROVIDE CLASS 40AF CONCRETE.
 2. PROVIDE EPOXY-COATED GRADE 60 TYPE S REINFORCEMENT IN ACCORDANCE WITH 708.02.
 3. PROVIDE A RUBBED SURFACE FINISH TO THE INSIDE (TRAFFIC) FACE IN ACCORDANCE WITH 502.03 PART 1.
 4. PROVIDE A TEXTURED SURFACE TO OUTSIDE FACE OF CONCRETE PARAPET. PROVIDE TEXTURED SURFACE IN ACCORDANCE WITH 575, USING PATTERN _____ WITH A MAX. DEPTH OF 1 1/2".
 5. CONSTRUCT PARAPET PLUMB, WITH STEEL POSTS SQUARE TO THE TOP OF PARAPET. PROVIDE TYPE B CLASS 1 GROUT IN ACCORDANCE WITH 705.02 UNDER POST BASE IF GAPS GREATER THAN 1/16" EXIST.
 6. PLACE PARAPET IN THE SAME SEQUENCE AS THE DECK PLACEMENT. CONSTRUCT USING CAST-IN-PLACE METHOD.
 7. WATER CURE THE CONCRETE SURFACE IN ACCORDANCE WITH 502.03 PART J.
 8. ADJUST HEIGHT OF PARAPET TO COMPENSATE FOR THE CAMBER AND LOAD DEFLECTION OF THE SUPERSTRUCTURE. CALCULATE THE AMOUNT OF ADJUSTMENT FOR APPROVAL.
 9. PROVIDE WALL JOINTS AT INTERIOR BENTS WITHOUT SLAB EXPANSION JOINTS. PROVIDE DUMMY JOINTS UNIFORMLY THE LENGTH OF THE BRIDGE SPACED AT NOT LESS THAN 6'-0" NOR GREATER THAN 12'-0".
 10. FORM OR CORE HOLES AND RECESSES IN TERMINAL CONNECTION. PERCUSSION DRILLING IS NOT PERMITTED. ADJUST PLACEMENT OF REINFORCING TO AVOID BOLT HOLES AND RECESSES. PROVIDE BOLT RECESSES ONLY WHEN PEDESTRIAN SIDEWALKS ARE ADJACENT TO BACK OF RAIL. PROVIDE BOLTS OF SUFFICIENT LENGTH TO EXTEND 3/4" BEYOND NUT.
 11. PROVIDE TEXTURED SURFACE ONLY ON 1 SIDE. INCREASE 1'-2" PARAPET THICKNESS TO 1'-4" FOR TEXTURED SURFACE ON BOTH SIDES.
 12. PROVIDE TEXTURED CONCRETE SURFACE IN ACCORDANCE WITH 575 WITH PATTERN XXXX.

REVISIONS			DESIGNED
NO.	DATE	BY	DESCRIPTION

DESIGNED: _____
 DESIGN CHECKED: _____
 DETAILED: _____
 DWG. CHECKED: _____
 CORRECTIONS: _____

SCALES SHOWN ARE FOR 11" X 17" PRINTS ONLY
 CADD FILE NAME: Standards/Bridge Standard Drawings/B13_3A.dgn
 DRAWING DATE: DEC 2024

IDAHO TRANSPORTATION DEPARTMENT
 YOUR Safety → YOUR Mobility → YOUR Economic Opportunity

APPROVED BY: BRIDGE ENGINEER MICHAEL T. JOHNSON DATE: _____

ENGLISH

PROJECT NO. _____

COMBINATION RAILING SHEET 1 OF 2
 WITH APPROACH SLAB @ INTEGRAL ABUTMENT

BRIDGE LRFD DESIGN MANUAL, B13.3A

BRIDGE PLANS	
BRIDGE KEY NO.	
COUNTY	KEY NO.
BRIDGE DWG. NO.	SHEET OF