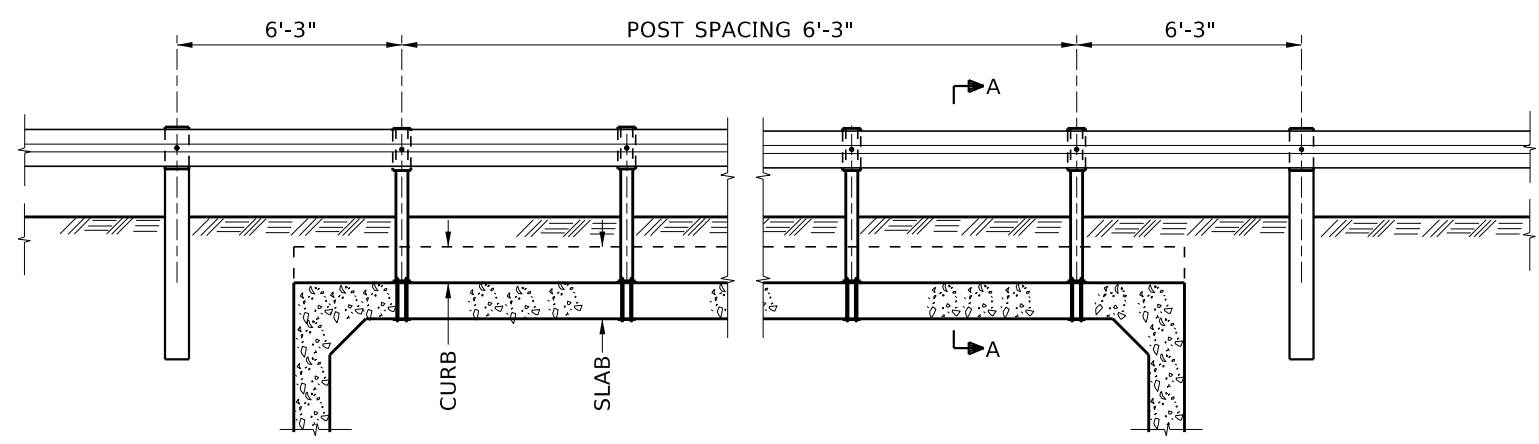


GUARDRAIL PLAN
3/16" = 1'-0"



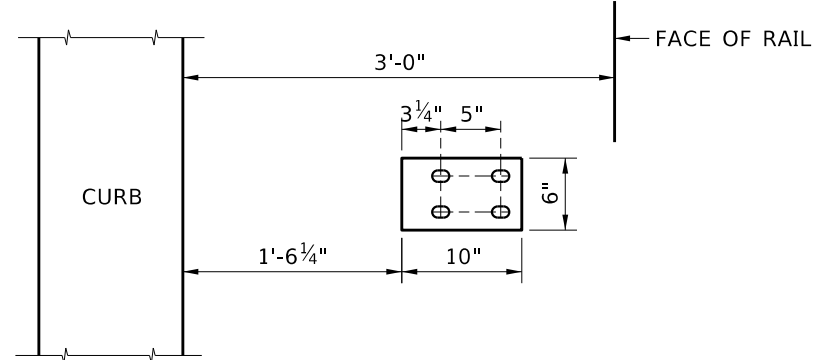
GUARDRAIL ELEVATION
3/16" = 1'-0"

GENERAL NOTES

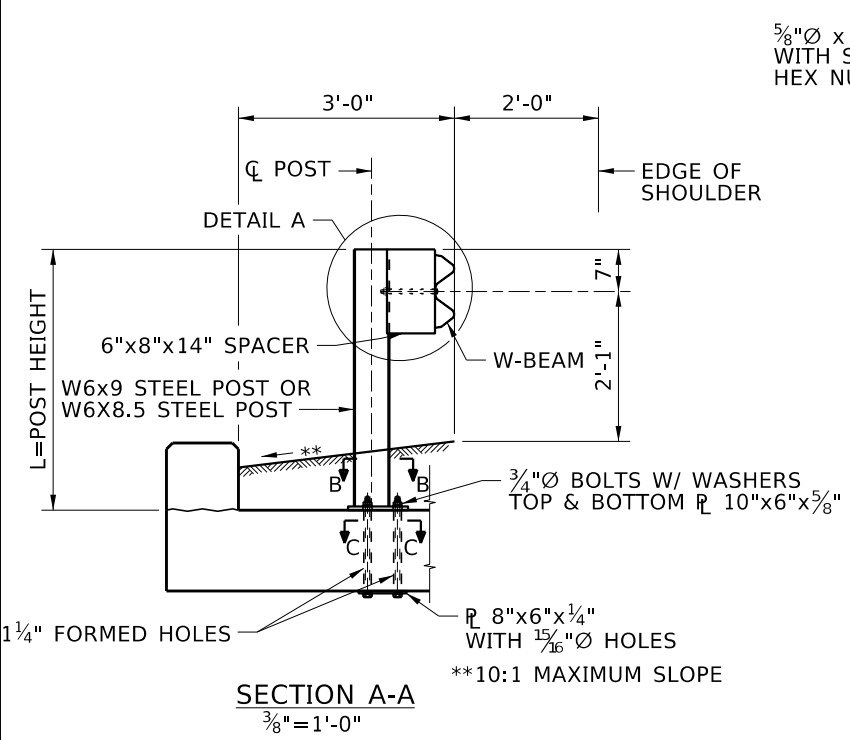
1. PROVIDE MATERIAL FOR STEEL POST AND PLATES IN ACCORDANCE WITH ASTM A709 GRADE 36.
2. PROVIDE WOOD SPACER BLOCKS IN ACCORDANCE WITH 710.03
3. PROVIDE ANCHOR BOLTS IN ACCORDANCE WITH ASTM F1554 GRADE 36 AND NUTS IN ACCORDANCE WITH ASTM A563 GRADE A, HEX OR HEAVY HEX.
4. GALVANIZE GUARDRAIL POSTS, HARDWARE AND ACCESSORIES AFTER FABRICATION IN ACCORDANCE WITH ASTM A123 OR ASTM A153 EXCEPT AS OTHERWISE NOTED.
5. PROVIDE WASHERS IN ACCORDANCE WITH ASTM F436, TYPE 1.
6. WELD IN ACCORDANCE WITH AASHTO/AWS D1.5 STANDARD SPECIFICATIONS FOR WELDING OF STRUCTURAL STEEL HIGHWAY BRIDGES.
7. PROVIDE 3 COPIES OF CERTIFIED MILL TEST REPORTS COVERING RAIL MATERIAL, POSTS, ANCHOR BOLTS AND OTHER MATERIAL AS REQUESTED.
8. SET RAIL POSTS PLUMB.
9. SEE ROADWAY PAY ITEM 612-005A FOR GUARD RAIL, RAILS, POSTS WITH ATTACHMENTS, AND ANCHORAGES AS SHOWN ON THE PLANS.
10. SEE ROADWAY STANDARD DRAWING 612-1 FOR HOLE LOCATIONS IN POST.
11. SEE ROADWAY STANDARD DRAWING 612-1, NOTE 10 FOR USE OF POLYETHYLENE BLOCKOUTS.

POST HEIGHT	1ST POST	2ND POST	3RD POST	4TH POST
LEFT SIDE*				
RIGHT SIDE*				

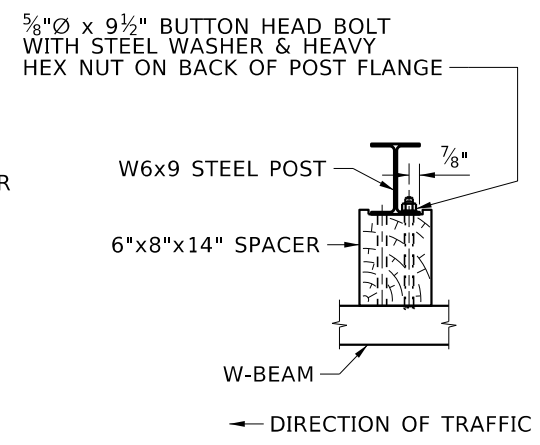
POST HEIGHT
* LOOKING AHEAD ON STATION



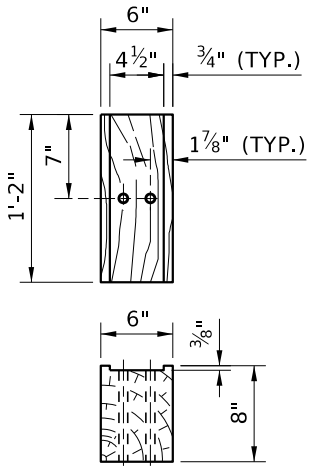
ANCHOR BOLT LOCATION
3/4" = 1'-0"



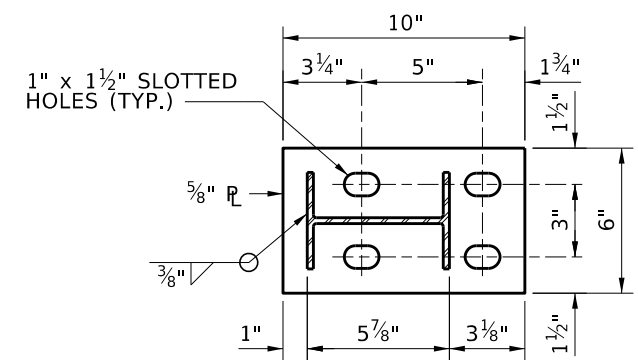
SECTION A-A
3/8" = 1'-0"



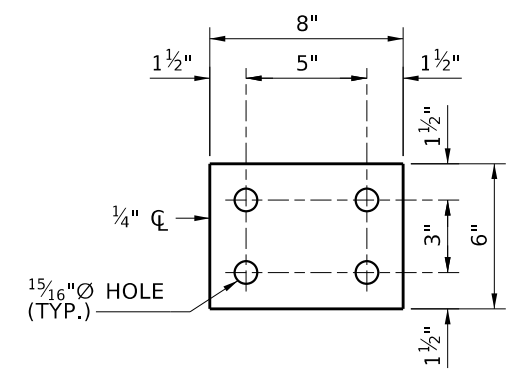
DETAIL A
3/4" = 1'-0"



WOOD BLOCKOUT
SEE NOTE 11
3/4" = 1'-0"



SECTION B-B
1 1/2" = 1'-0"



SECTION C-C
1 1/2" = 1'-0"

REVISIONS			
NO.	DATE	BY	DESCRIPTION

DESIGNED	
DESIGN CHECKED	
DETAILED	
DWG. CHECKED	
CORRECTIONS	

IDAHO TRANSPORTATION DEPARTMENT
 YOUR Safety → YOUR Mobility → YOUR Economic Opportunity
 STANDARDS/BRIDGE STANDARD DRAWINGS
 813_6A.DGN.dgn
 DRAWING DATE: OCT 2023
 APPROVED BY: BRIDGE ENGINEER **MICHAEL T. JOHNSON** DATE:

ENGLISH
 PROJECT NO.

W-BEAM RAILING, THROUGH BOLT ANCHORAGE
 FOR RAIL RETROFIT PROJECTS, USE STD. DWG.
612-1 DETAILS
 BRIDGE LRFD DESIGN MANUAL, B13.6A

BRIDGE PLANS	
BRIDGE KEY NO.	
COUNTY	KEY NO.
BRIDGE DWG. NO.	SHEET OF