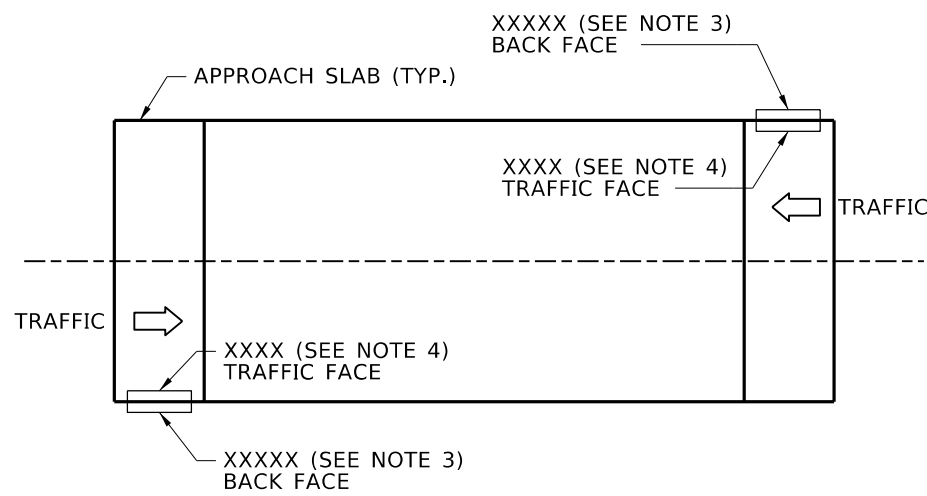
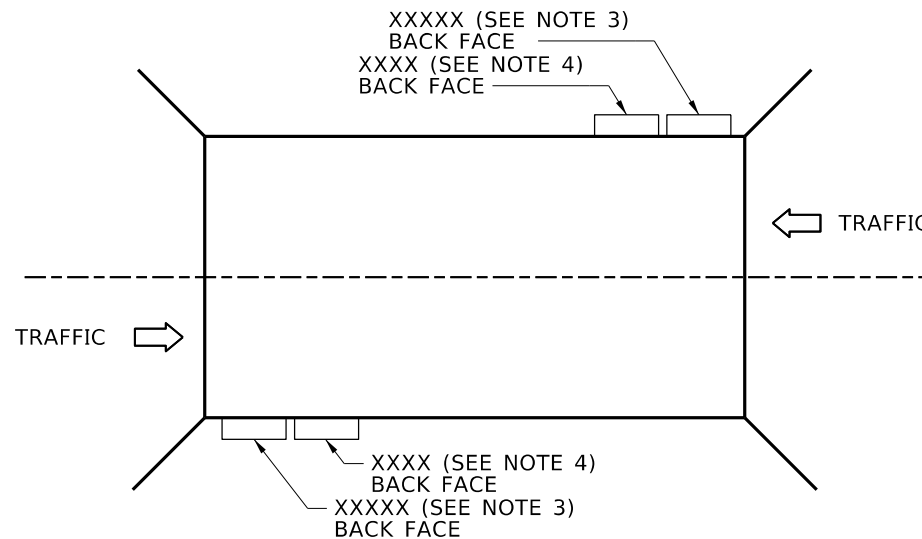


THE NUMBER "9" IS NOT SHOWN, BUT IS SIMILAR TO NUMBER "6".

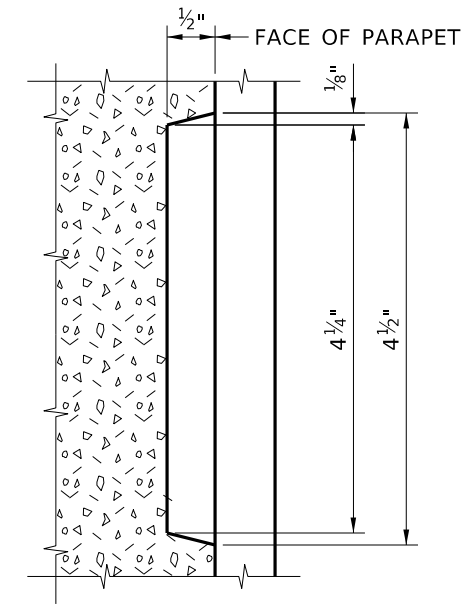
A = RADIUS TO SUIT



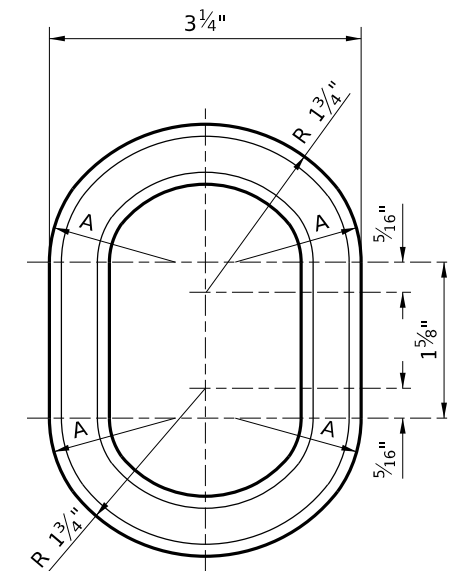
**DATE PANEL LOCATION - BRIDGE**  
NTS  
(SEE PARAPET SHEET FOR DETAILS)



**DATE PANEL LOCATION - CURB/EDGE BEAM**  
NTS  
(SEE CULVERT SHEET FOR DETAILS)  
(SEE PEDESTRIAN/BICYCLE RAILING SHEETS FOR DETAILS)



**END VIEW OF NUMERALS  
SHOWING ATTACHMENT TO FORMS**  
NTS



**GENERAL NOTES - BRIDGE**

1. RECESS NUMBERS INTO THE DATE PANEL.
2. DATE PANEL IS INCIDENTAL TO THE PARAPET PAY ITEM.
3. PLACE THE 5 DIGIT BRIDGE KEY NUMBER ON BACK FACE.
4. PLACE THE 4 DIGIT YEAR CONSTRUCTION COMPLETED ON TRAFFIC FACE.
5. FIELD ADJUST LOCATION OF DATE PANEL ON BACK OF PARAPETS WITH PROTECTIVE FENCE.

**GENERAL NOTES - CURB/EDGE BEAM**

1. RECESS NUMBERS INTO THE DATE PANEL.
2. DATE PANEL IS INCIDENTAL TO THE FOLLOWING PAY ITEMS:
  - a. 578-005A PRECAST CONCRETE CULVERT
  - b. 502-025A CONCRETE CLASS 40A FOR CAST-IN-PLACE CULVERT
  - c. 504-035A PEDESTRIAN/BICYCLE RAILING
3. PLACE THE 5 DIGIT BRIDGE KEY NUMBER ON BACK FACE.
4. PLACE THE 4 DIGIT YEAR CONSTRUCTION COMPLETED ON TRAFFIC FACE.

REVISIONS				DESIGNED	SCALES SHOWN ARE FOR 11" X 17" PRINTS ONLY
NO.	DATE	BY	DESCRIPTION	DESIGN CHECKED	
▲				DESIGNED	CADD FILE NAME Standards/Bridge Standard Drawings B13_7.DGN
▲				DETAILED	
▲				DWG. CHECKED	
▲				CORRECTIONS	

**IDAHO  
TRANSPORTATION  
DEPARTMENT**

YOUR Safety→YOUR Mobility→YOUR Economic Opportunity

DRAWING DATE:  
DEC 2024

APPROVED BY:  
BRIDGE ENGINEER **MICHAEL T. JOHNSON** DATE: \_\_\_\_\_

**ENGLISH**  
PROJECT NO.

**DATE PANEL**

BRIDGE LRFD DESIGN MANUAL, B13.7

BRIDGE PLANS	
BRIDGE KEY NO.	
COUNTY	KEY NO.
BRIDGE DWG. NO.	SHEET OF